

Kharbatha al Misbah Village Profile



Prepared by



The Applied Research Institute – Jerusalem

Funded by



Spanish Cooperation

2012

Acknowledgments

ARIJ hereby expresses its deep gratitude to the Spanish agency for International Cooperation for Development (AECID) for their funding of this project.

ARIJ is grateful to the Palestinian officials in the ministries, municipalities, joint services councils, village committees and councils, and the Palestinian Central Bureau of Statistics (PCBS) for their assistance and cooperation with the project team members during the data collection process.

ARIJ also thanks all the staff who worked throughout the past couple of years towards the accomplishment of this work.

Background

This booklet is part of a series of booklets, which contain compiled information about each city, town, and village in Ramallah Governorate. These booklets came as a result of a comprehensive study of all localities in Ramallah Governorate, which aims at depicting the overall living conditions in the governorate and presenting developmental plans to assist in developing the livelihood of the population in the area. It was accomplished through the "Village Profiles and Needs Assessment;" the project funded by the Spanish Agency for International Cooperation for Development (AECID).

The "Village Profiles and Needs Assessment" was designed to study, investigate, analyze and document the socio-economic conditions and the needed programs and activities to mitigate the impact of the current unsecure political, economic and social conditions in Ramallah Governorate.

The project's objectives are to survey, analyze, and document the available natural, human, socioeconomic and environmental resources, and the existing limitations and needs assessment for the development of the rural and marginalized areas in Ramallah Governorate. In addition, the project aims at preparing strategic developmental programs and activities to mitigate the impact of the current political, social, and economic instability with the focus on the agricultural sector.

All locality profiles in Arabic and English are available online at <http://vprofile.arij.org>.

Table of Content

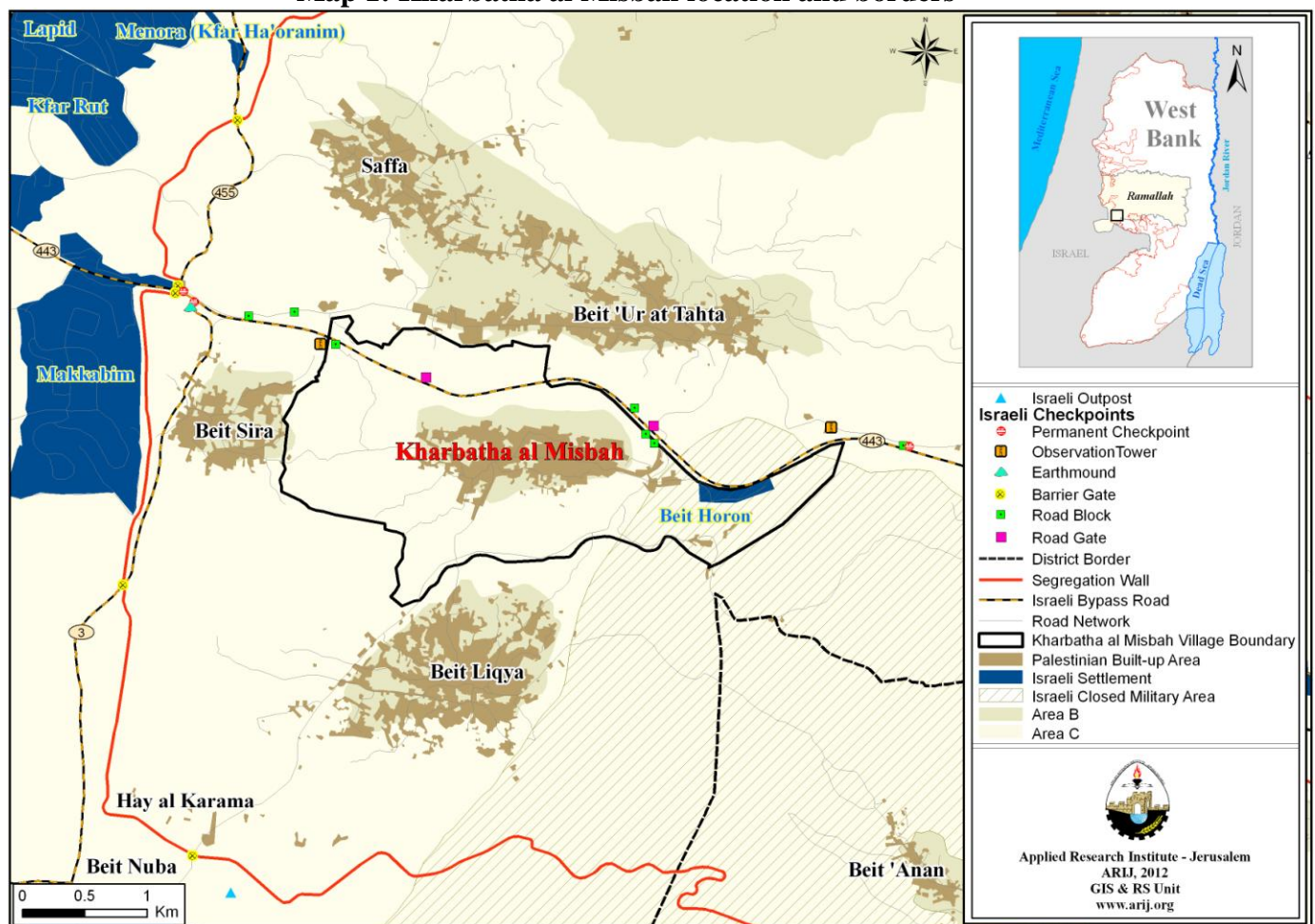
<i>Location and Physical Characteristics</i>	4
<i>History</i>	5
<i>Religious and Archaeological Sites</i>	6
<i>Population</i>	6
<i>Education</i>	7
<i>Health Status</i>	8
<i>Economic Activities</i>	9
<i>Agricultural Sector</i>	10
<i>Institutions and Services</i>	12
<i>Infrastructure and Natural Resources</i>	13
<i>Environmental Conditions</i>	14
<i>Impact of the Israeli Occupation</i>	15
<i>Development Plans and Projects</i>	17
<i>Implemented Projects</i>	17
<i>Proposed Projects</i>	18
<i>Locality Development Priorities and Needs</i>	19
<i>References:</i>	20

Kharbatha al Misbah Village Profile

Location and Physical Characteristics

Kharbatha al Misbah is a Palestinian village in Ramallah Governorate (horizontally) located 12.5km west of Ramallah City. Kharbatha al Misbah is bordered by Beit „Ur al Fauqa village to the east, Beit „Ur at Tahta village to the north, Beit Sira village to the west, and Beit Liqya village to the south (ARIJ GIS, 2012) (See map 1).

Map 1: Kharbatha al Misbah location and borders



Source: ARIJ GIS, 2012

Kharbatha al Misbah is located at an altitude of 390m above sea level with a mean annual rainfall of 571.4mm. The average annual temperature is 18 ° C, and the average annual humidity is approximately 61% (ARIJ GIS, 2012).

Since 1997, Kharbatha al Misbah has been governed by a village council, which is currently administrated by 11 members appointed by the Palestinian National Authority with an additional employee working in the council. Moreover, the village council is included within Beit Liqya Joint Services Council and Ni"lin Council's Planning Committee, where it owns a permanent headquarters and water maintenance devices but does not possess a vehicle for the collection of solid waste (Kharbatha al Misbah Village Council, 2011).

It is the responsibility of the village council to provide a number of services to the residents of Kharbatha al Misbah, including:

1. Infrastructure services, such as water provision and management.
2. Solid waste collection, road construction and restoration, and social development services.
3. Proposal of projects and case studies for the village.

History

Originally, the village was called Kawkab as Sabah, meaning the morning planet, as the Islamic armies invaded the village in the morning on their way to „Emwas village. However, the name was later changed to Kharbatha al Misbah (Kharbatha al Misbah Village Council, 2011).

The establishment of the village dates back to the Islamic era (Kharbatha al Misbah Village Council, 2011) (See photo below for Kharbatha al Misbah village).

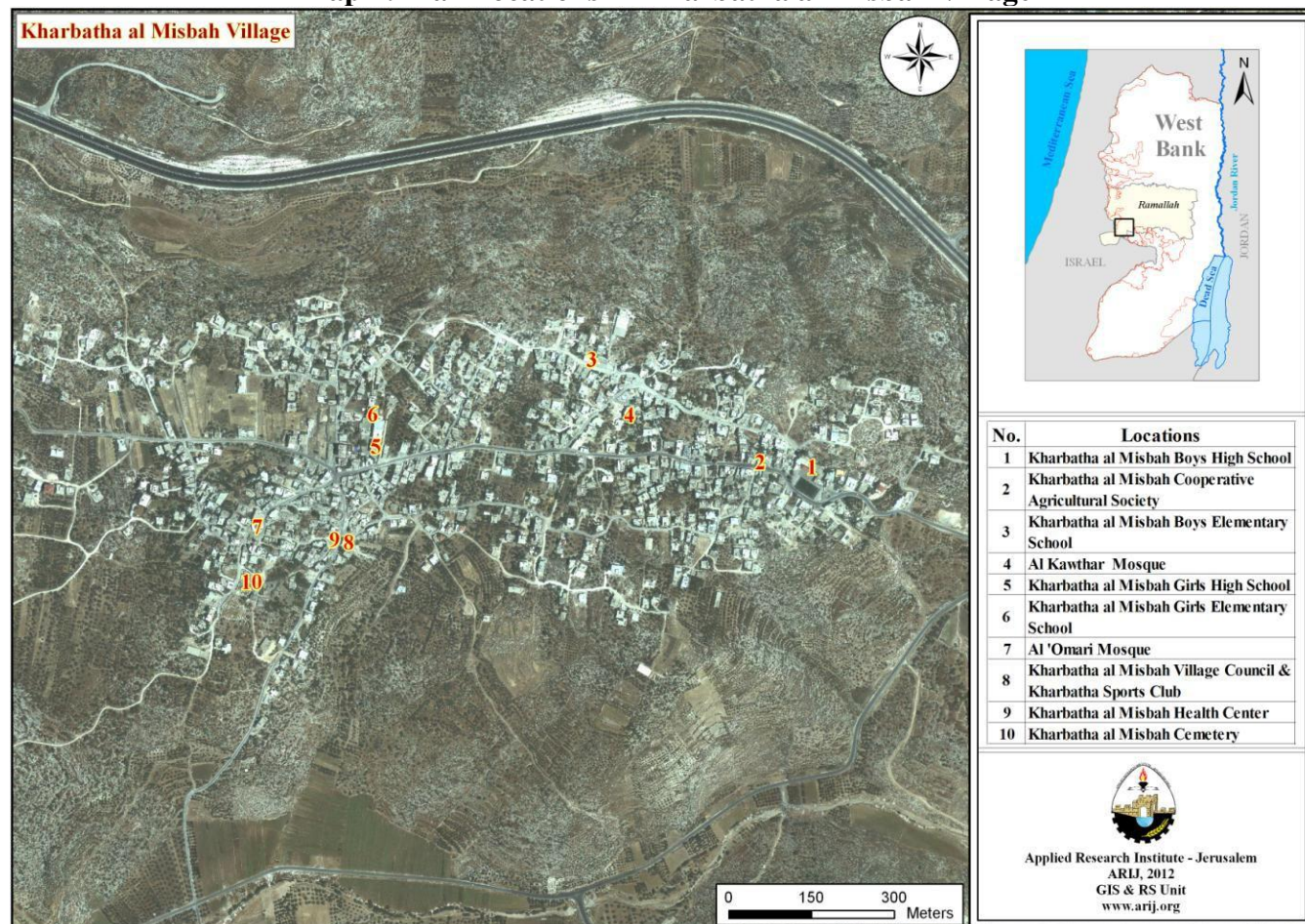
Photos of Kharbatha al Misbah



Religious and Archaeological Sites

In terms of religious establishments, there are two mosques in the village; Al „Omari and Al Kawthar Mosques. As for the archaeological sites, there are few, mainly Al „Omari Mosque and some Shrines to saints (Kharbatha al Misbah Village Council, 2011) (See Map 2).

Map 2: Main locations in Kharbatha al Misbah Village



Source: ARIJ GIS, 2012

Population

According to the Palestinian Central Bureau of Statistics (PCBS), the total population of Kharbatha al Misbah in 2007 was 4,898; of whom 2,503 were male and 2,395, female. There were additionally registered to be 815 households living in 924 housing units.

Age Groups and Gender

The General Census of Population and Housing carried out by PCBS in 2007 showed the distribution of age groups in Kharbatha al Misbah was as follows: 41.9% were less than 15 years old, 55.2% between 15 - 64 years old, whilst 2.3% fell into the 65 years and older category. Data additionally showed that

the sex ratio of males to females in the village is 104.5:100, meaning that males and females constituted 51.1% and 48.9% of the population, respectively.

Families

Kharbatha al Misbah residents are composed of several families, mainly Darraj, Marqoosh, Muslih and Al Hibel (Kharbatha al Misbah Village Council, 2011).

Education

According to the results of the PCBS Population, Housing and Establishment Census-2007, the illiteracy rate among Kharbatha al Misbah population is about 9.3%, of whom 85.2% are females. Of the literate population, 15.8% can only read and write, with no formal education, 27.7% had elementary education, 30.9% had preparatory education, 11.2% had secondary education, and 4.8% completed higher education. Table 1, shows the educational level in the village of Kharbatha al Misbah, by sex, and educational attainment in 2007.

Table 1: Kharbatha al Misbah population (10 years and above) by sex and educational attainment

Sex	Illiterate	Can read & write	Elementary	Preparatory	Secondary	Associate Diploma	Bachelor	Higher Diploma	Master	PhD	Unknown	Total
M	48	252	557	591	229	26	75	1	7	1	2	1,789
F	277	299	408	485	159	26	31	-	-	-	4	1,689
T	325	551	965	1,076	388	52	106	1	7	1	6	3,478

Source: PCBS, 2009.

With regards to the basic and secondary education institutions and schools in Kharbatha al Misbah in the academic year 2010/2011, there were registered four public schools in the village, ran by the Palestinian Ministry of Higher Education (MoEHE). But no kindergartens (see Table 2) (Directorate of Education in Ramallah, 2011).

However, due to the lack of high schools for males in the village, male students of Kharbatha al Misbah head to Kharbatha al Misbah village schools in order to complete their secondary education. This school is 3km from the village.

In the village (in 2011) there were 1,479 students, 79 teachers, and 49 classes registered (Directorate of Education in Ramallah, 2011). It should further be noted here that the average number of students per teacher in the school was nearly 23, whilst the average number of students per class was approximately 33.

Table 2: The Schools in Kharbatha al Misbah by name, stage, sex, and supervising authority

School Name	Supervising Authority	Sex
Kharbatha al Misbah Girls High School	Government	Females
Kharbatha al Misbah Boys High School	Government	Males
Kharbatha al Misbah Girls Elementary School	Government	Females
Kharbatha al Misbah Boys Elementary School	Government	Males
Source: Directorate of Education in Ramallah, 2011		

However, due to the lack of high schools for males and females in the village, students of Kharbatha al Misbah head to Beit Liqya village schools; 2km from the village, in order to complete their secondary education in a single-sex environment (Kharbatha al Misbah Village Council, 2011).

Moreover, the educational sector in Kharbatha al Misbah village suffers some obstacles, mainly (Kharbatha al Misbah Village Council, 2011):

1. The crowded status of the classrooms in schools.
2. The weak economic capabilities.
3. The weak educational staff.
4. The lack of interest by the Ministry of Education in the village schools of west Ramallah.

Furthermore, students suffer from the occupation forces harassments represented in the existence of partial and permanent checkpoints on the road leading to Beit Liqya Girls High School and the hard access to Beit Liqya Boys High School (Kharbatha al Misbah Village Council, 2011).

Health Status

There are a few health centers and services available in Kharbatha al Misbah village, including: a governmental health center, two private physician clinics, a governmental pharmacy and a governmental medical analysis laboratory. In case of the absence of any health services in the locality, residents of Kharbatha al Misbah head to Ramallah governmental hospital in Ramallah city (approx. 20km from the village) (Kharbatha al Misbah Village Council, 2011).

The health sector in the village suffers some obstacles and problems, including:

1. The health center"s inability to accommodate the number of patients on a daily basis.
2. The lack of an ambulance in the village.
3. The lack of an appropriate health center that provides all needed medical services.

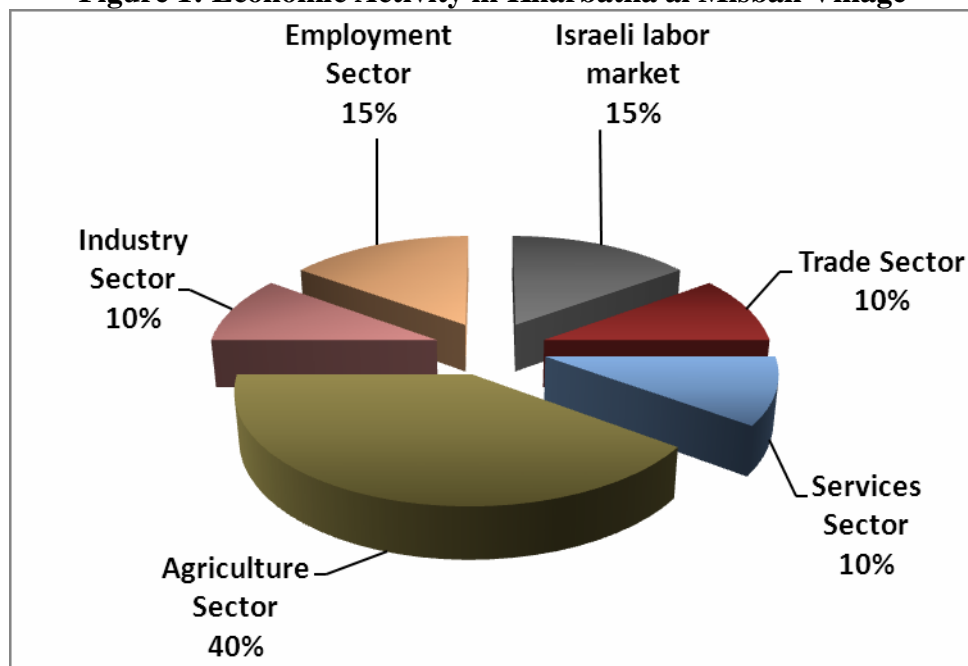
Economic Activities

The economy in Kharbatha al Misbah is dependent on several economic sectors, mainly: the agriculture sector, which absorbs 40% of the village's workforce (See Figure1).

The results of a field survey conducted by ARIJ team in 2011 for the distribution of labor by economic activity in Kharbatha al Misbah are the following (Kharbatha al Misbah Village Council, 2011):

- Agriculture Sector (40%)
- Israeli Labor Market (15%)
- Government or Private Employees Sector (15%)
- Trade Sector (10%)
- Services Sector (10%)
- Industry (10%)

Figure 1: Economic Activity in Kharbatha al Misbah Village



Source: Kharbatha al Misbah Village Council, 2011

In term of industrial productions and parks in Kharbatha al Misbah village, there are 40 grocery stores, two butcheries, 3 different professional workshops (carpentry, aluminum, glass,.. etc.), 3 different services stores, two olive oil-presses and a store for agricultural tools (Kharbatha al Misbah Village Council, 2011).

The unemployment rate in Kharbatha al Misbah has reached (in 2011) about 20%, and the economical groups most affected by the Israeli restrictions were (Kharbatha al Misbah Village Council, 2011):

1. Former workers in Israel.
2. Workers in the agriculture sector.

3. Workers in industry.

Labor Force

According to the PCBS Population, Housing and Establishment Census-2007, 31.4% of Kharbatha al Misbah labor force was economically active, of whom 79.5% were employed, 68.5% were not economically active, 51.6% were students, and 38.4% were housekeepers (See table 3).

Table 3: Kharbatha al Misbah population (10 years and above) by sex and employment status-2007

SEX	Economically Active				Not Economically Active						Un-known	Total
	Employed	Currently Unemployed	Unemployed (Never worked)	Total	Students	House-keeping	Unable to work	Not working & Not looking for work	Other	Total		
M	818	140	78	1,036	638	4	76	11	20	749	4	1,789
F	49	—	6	55	591	910	128	—	4	1,633	1	1,689
T	867	140	84	1,091	1,229	914	204	11	24	2,382	5	3,478

Source: PCBS, 2009.

Agricultural Sector

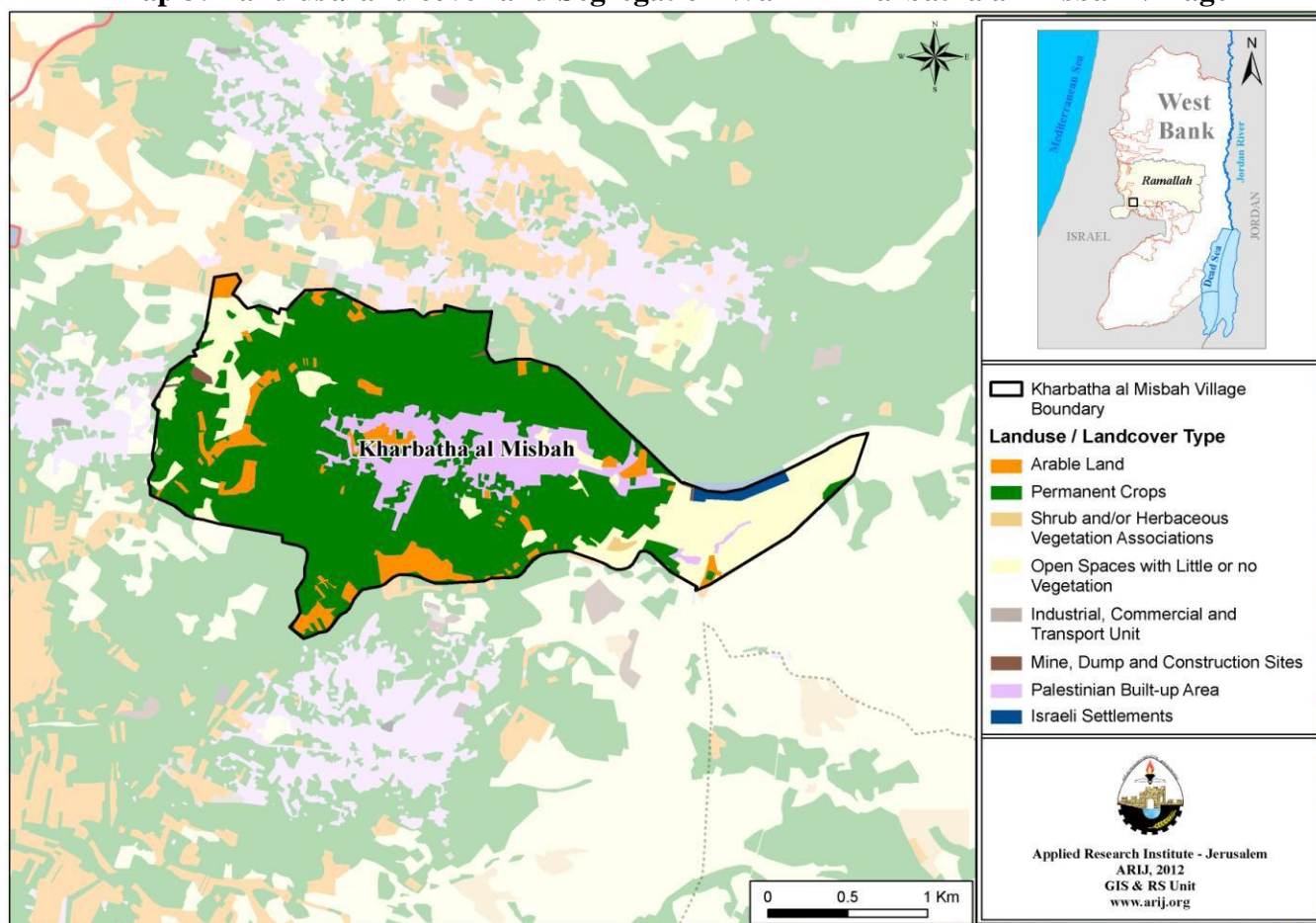
Kharbatha al Misbah Village lies on an area of 5,092 dunams, of which 3,573 dunams are considered arable lands, and 580 dunams are dedicated to residential services (see table 3 and map 3).

Table 3: Land use and land cover in Kharbatha al Misbah village in 2010 (area in dunam)

Total Area	Built up Area	Agricultural area (3,573)				Inland water	Forests	Open Spaces	Area of Industrial, Commercial & Transport Unit	Area of Settlement, Military Bases & Wall Zone
		Permanent Crops	Green-houses	Range-lands	Arable lands					
5,092	580	3,201	0	10	362	0	0	883	15	40

Source: ARIJ - GIS Unit, 2012.

Map 3: Land use/land cover and Segregation Wall in Kharbatha al Misbah Village



Source: ARIJ GIS, 2012

Table 6 shows the different types of rain-fed and irrigated open-cultivated vegetables in Kharbatha al Misbah. The most common crop cultivated within this area is snake-cucumber.

Table 6: Total area of rain-fed and irrigated open cultivated vegetables in Kharbatha al Misbah village (dunam)

Fruity vegetables		Leafy vegetable		Green legumes		Bulbs		Other vegetables		Total area	
RF	Irr.	RF	Irr.	RF	Irr.	RF	Irr.	RF	Irr.	RF	Irr.
245	0	0	0	10	1	15	0	5	0	275	1

Rf: Rain-fed, Irr: Irrigated

Source: Palestinian Ministry of Agriculture, 2009

Table 7 shows the different types of fruit trees planted in the area. Kharbatha al Misbah is famous for olives; there is a total of 3,183 dunams planted with olive trees.

Table 7: Total area of fruit and olive trees in Kharbatha al Misbah Village (dunam)

Olives		Citrus		Stone-fruits		Pome fruits		Nuts		Other fruits		Total area	
Rf	Irr.	Rf	Irr.	Rf	Irr.	Rf	Irr.	Rf	Irr.	Rf	Irr.	Rf	Irr.
3,183	0	0	0	15	0	0	0	10	0	50	0	3,258	0

Rf: Rain-fed, Irr: Irrigated

Source: Palestinian Ministry of Agriculture, 2009

As for the field crops and forage in Kharbatha al Misbah, cereals (in particular wheat) are the most cultivated covering an area of about 620 dunams, in addition to the cultivation of dry legumes such as beans (See table 8).

Table 8: Total area of field crops in Kharbatha al Misbah village (dunam)

Cereals		Bulbs		Dry legumes		Oil crops		Forage crops		Stimulating crops		Other crops		Total area	
Rf	Irr	Rf	Irr	Rf	Irr	Rf	Irr	Rf	Irr	Rf	Irr	Rf	Irr	Rf	Irr
620	0	41	0	58	0	15	0	150	0	0	0	0	0	884	0

Rf: Rain-fed, Irr: Irrigated

Source: Palestinian Ministry of Agriculture, 2009

Table 9 shows the distribution of livestock in Kharbatha al Misbah village.

Table 9: Livestock in Kharbatha al Misbah village

Cows*	Sheep	Goats	Camels	Horses	Donkeys	Mules	Broilers	Layers	Bee Hives
0	173	377	0	0	0	0	87,200	49,400	12

*Including cows, bull calves, heifer calves and bulls

Source: Palestinian Ministry of Agriculture, 2009

There are no agricultural roads in the village (Kharbatha al Misbah Village Council, 2011):

Moreover, the agricultural sector in the village suffers some obstacles and problems, including (Kharbatha al Misbah Village Council, 2011):

- The lack of agricultural roads.
- The lands are mountainous and rugged lands that are unsuitable for cultivation.
- The lack of water source.
- The lack of moral and financial support for farmers.

Institutions and Services

Kharbatha al Misbah village has only one governmental institution; a post office division, in addition to a number of local institutions and associations that provide services to various sectors of society: children, youth, and women. The services are in the areas of culture, sports and others, including (Kharbatha al Misbah Village Council, 2011):

- Kharbatha al Misbah Village Council:** Founded in 1997 by the Ministry of Local Government with the goal of taking care of all the issues in the village and providing various services to its population.
- Kharbatha al Misbah Sports Club:** Founded in 1970 and is interested in all sports and cultural activities for young people.
- The Agricultural Society:** Founded in 1985.

Infrastructure and Natural Resources

Electricity and Telecommunication Services:

Kharbatha al Misbah has been connected to a public electricity network since 1983; served by Jerusalem Electricity Company, which is the main source of electricity in the village. Approximately 95% of the housing units in the village are connected to the network. However, the village residents suffer some problems concerning electricity, mainly (Kharbatha al Misbah Village Council, 2011):

1. The weak electricity power supply.
2. The high costs of electricity.
3. The old and worn out condition of the electricity network.

Furthermore, Kharbatha al Misbah is connected to a telecommunication network with approximately 60% of the housing units within the village boundaries being connected to phone lines (Kharbatha al Misbah Village Council, 2011).

Transportation Services:

There are only 15 taxis that are considered to be the main means of transportations in Kharbatha al Misbah used by the village residents to transport them from the village to Ramallah city center; these are considered insufficient (Kharbatha al Misbah Village Council, 2011). As for the road network in the village; there are a total of 9km of secondary roads; 1km of which are paved and in good condition, 3km are paved but in poor condition and 5km are unpaved roads (Kharbatha al Misbah Village Council, 2011).

Water Resources:

The West Bank Water Department provides the village with water through a water network that has been constructed since 1997. This network supplies water to almost 95% of the housing units in the Village (Kharbatha al Misbah Village Council, 2011). The quantity of water supplied to the village reaches in 2010 approximately 120 thousand m³/ year (Kharbatha al Misbah Village Council, 2011), and thus the amount of water consumed per person is estimated to be 67 liter/capita/day. Nevertheless, residents of Kharbatha al Misbah do not really consume this amount of water due to the water loss from transfer of water and distribution through the network from the main company provider to housing units, and it reaches to 25%, and thus the average of water consumption per capita is 50 liter/capita/day (Kharbatha al Misbah Village Council, 2011). This average is less than the recommended amount proposed by the World Health Organization (WHO) which is 100 liter/capita/day.

It is worth mentioning that there are 300 household harvesting cisterns in the village. However, each cubic of water from the public network costs 4 NIS (Kharbatha al Misbah Village Council, 2011).

Sanitation:

Kharbatha al Misbah Village lacks a public sewage network; most of the population uses cesspits as main means for wastewater disposal (Kharbatha al Misbah Village Council, 2011).

Based on the estimated daily per capita water consumption, the estimated amount of wastewater generated per day is approximately 197 cubic meters, or 72 thousand cubic meters annually. At the individual level in the village, it is estimated that the per capita wastewater generation is approximately 35 liters per day. The wastewater collected by cesspits, are discharged by tankers directly to open areas or nearby valleys without any regard for the environment. Here it should be noted that there is no wastewater treatment either at the source or at the disposal sites and this poses a serious threat to the environment and the public health (ARIJ - WERU, 2012).

Solid Waste Management:

The Joint Services Council for Planning and Development for west of Ramallah region is considered the official body responsible for managing solid waste, i.e. solid waste collection and disposal, generated from the citizens and establishments in the village, which is currently represented by solid waste collection and disposal. Due to the fact that the process of solid waste management is costly, a monthly fee has been charged on the population serviced by domestic solid waste collection and transportation services which is about 10 NIS/month per capita. However, the collected fees are not considered sufficient for good management of solid waste; only 50% of these fees are collected from the citizens (Kharbatha al Misbah Village Council, 2011).

Most of the population in Kharbatha al Misbah benefits from the solid waste services, whereby waste is collected from households, institutions, shops, and public squares in plastic bags and then and then transferred to certain spots; due to the lack of containers in the locality. The Joint Council collects the solid waste from the containers three times a week and transports it by waste vehicle to the Beit Liqya dumping site; 3km away. The common method for solid waste treatment in this dumping site is burying the waste at random (Kharbatha al Misbah Village Council, 2011).

The daily per capita rate of solid waste production in Kharbatha al Misbah is 0.7kg. Thus the estimated amount of solid waste produced per day from the Kharbatha al Misbah residents is nearly 3.4 tons, or 1,251 tons per year (ARIJ - WERU, 2012).

Environmental Conditions

Like other villages and towns in the governorate, in Kharbatha al Misbah experiences several environmental problems which must be addressed. These problems can be identified as follows:

Water Crisis

- Water is cut off by the West Bank Water Department for long periods of time during summer in several neighborhoods of the town for several reasons:
 - (1) Israeli control over Palestinian water resources.
 - (2) High rate of water losses due to the age of the water network and its need of rehabilitation and renovation.
- Lack of a public water reservoir in the village.

Wastewater Management

- The absence of a public sewage network means that in Kharbatha al Misbah residents are forced to use unhygienic cesspits for the disposal of wastewater, and/or discharge wastewater in the streets. This is particularly common in winter, as citizens cannot afford the high cost of sewage tankers during this period. These methods facilitate environmental damage, health problems, and the spread of epidemics and diseases in the village. This wastewater also contaminates the groundwater and water collected in household, rainwater-harvesting cisterns, as it mixes with the waste water thus becomes unsuitable for drinking. This happens because most cesspits are built without lining, allowing wastewater to enter into the ground. These cesspits are built in order to avoid the need to use sewage tankers. Moreover, the untreated wastewater collected from cesspits by sewage tankers is disposed of in open areas without concern for the damage it causes to the environment and to residents' health.

Solid Waste Management:

- The lack of a central sanitary landfill to serve in Kharbatha al Misbah and the other neighboring communities in the governorate is due mainly to the obstacles created by the Israeli authorities for local and national institutions in granting licenses to establish such a landfill, because the appropriate land is within Area C and under Israeli control. Additionally, the implementation of such projects depends on funding from donor countries. The lack of a sanitary landfill is a source of pollution to the groundwater and soil through the leachate produced from the solid waste, and produces bad odors and distortion of the landscape.

Impact of the Israeli Occupation

Geopolitical status in Kharbatha al Misbah

According to the Oslo II Interim Agreement signed on 28th September 1995 between the Palestinian Liberation Organization (PLO) and Israel, Kharbatha al Misbah village was divided into areas "B" and "C". Approximately 966 dunams (19% of the total village area) were assigned as area B, where the Palestinian National Authority (PNA) has a complete control over civil matters but Israel continues to have overriding responsibility for security. Area B constitutes most of the inhabited Palestinian areas, including municipalities, villages and some camps. It is worth mentioning that most of the village's population resides in area B which constitutes a very small area in comparison to the total area of the village. The rest of the village's area, constituting 4,126 dunams (81% of the total area), is classified as area C, where Israel retains full control over security and administration related to the territory. In area C Palestinian building and land management is prohibited unless through consent or authorization by the Israeli Civil Administration. Most of the lands lying within the area C are agricultural areas and open spaces (table 10).

Table 10: The Geopolitical Divisions of Kharbatha al Misbah – Ramallah Governorate

Area	Area in dunams	Percent of Total village area
Area A	0	0
Area B	966	19
Area C	4,126	81
Nature Reserve	0	0
Total	5,092	100

Source: Source: ARIJ-GIS, 2011

Kharbatha al Misbah Village and the Israeli Occupation Practices

Israel confiscated an area of 61 dunams of Kharbatha al Misbah village lands in order to build the Israeli settlement Beit Horon. This settlement is part of the Israeli bloc Giv"at Ze"ev. Beit Horon, currently inhabited by 1,139 Israeli settlers (table 11).

Table 11: Israeli Settlements constructed over Kharbatha al Misbah village's lands

Settlement Name	Year of construction	Area confiscated	Population of settlers
Beit Horon	1977	61	1,139
Total		61	1,139

Source: ARIJ-GIS, 2011

In 2005 the Israeli government proposed a plan that suggests the integration of all major Israeli settlements in the West Bank such as Ma"ale Adumim, Ariel, Giv"at Ze"ev, Gush Etzion, and Modi"in Illit. This plan is to include and incorporate all lands where those settlements are established into Israel, inside the Wall, considering them an essential part of the Israeli State. The plan is considered important and a good decision because *"the plan contributes to security, political standing, the economy and to the demographics of the Jewish people in the land of Israel"* as was said by the former Israeli Prime Minister Ariel Sharon when meeting with the former American president George Bush on 11th April 2005. With the implementation of the Segregation Wall plan, which is supposed to be completed by 2012, Israel will include the major Israeli settlements and blocs into its borders, in addition to the other settlements that lie to the west of the Wall. Altogether, the total number of Israeli settlements and blocs that are incorporated into Israel by the end of the Wall construction is 107.

The Government of Israel has also confiscated more land from Kharbatha al Misbah village to construct Israeli bypass roads no. 443¹ so as to connect Beit Horon with neighboring Israeli settlements to the east (within Giv"at Ze"ev bloc), settlements in east and west Jerusalem, Modi"in Illit bloc and settlements within the Green Line. The real threat of bypass roads lies in the buffer zone formed by the Israeli Occupation Force (IOF) along these roads, extending approximately 75 m on each side. These buffer zones dramatically increase the total area of land affected by their construction.

¹ The Israeli bypass road 443 is considered the main link between Ramallah City and many other Palestinian Villages in the southwest of the City, such villages include Saffa, Beit Sira, Kharbatha al Misbah, Beit Ur at Tahta, Beit Ur al Fauqa, At Tira and Betuniya.

Issued Military Orders in Kharbatha al Misbah Village

The Israeli Occupation Army has issued many military orders to confiscate lands in Kharbatha al Misbah for the construction of the Segregation Wall, including the following:

- Israeli Military Order No. (116/03/T): it was issued on the 31st of December 2003. It confiscates a total land area of 381 dunams from Ni'lin, Deir Qaddis and Kharbatha Al Misbah villages for the construction of the Israeli Segregation Wall.
- Israeli Military Order No. (39/04/T): it was issued on the 14th of April 2004. It confiscates a total land area of 159.2 dunams from Deir Qaddis and Kharbatha Al Misbah villages for the construction of the Israeli Segregation Wall.
- Israeli Military Order No. (66/05/T): it was issued on the 14th of March 2005. It confiscates a total land area of 430.9 dunams from Beit „Anan, Kharbatha al Misbah and Beit Liqya villages for the construction of the Israeli Segregation Wall.

Development Plans and Projects

Implemented Projects

Kharbatha al Misbah village council has implemented several development projects in Kharbatha al Misbah, during the last five years (See Table 12).

Table 21: Implemented Development Plans and Projects in Kharbatha al Misbah During the Last Five Years

Name of the Project	Type	Year	Donor
Construction of classrooms	Educational	2009	Ministry of Finance
Establishment of greenhouses & treatment units	Agricultural	2008	Italian Agency
Source: Kharbatha al Misbah Village Council, 2011			

Proposed Projects

Kharbatha al Misbah Village Council, in cooperation with the civil society organizations in the village and the village residents, looks forward to the implementation of several projects in the coming years. The project ideas were developed during the PRA workshop that was conducted by ARIJ staff in the village. The projects are as follows, in order of priority, from the viewpoint of the participants in the workshop (Kharbatha al Misbah Village Council, 2011):

1. Transferring the water link from its current location in the village to the southern area.
2. Renovating the water network.
3. Constructing new agricultural roads and reclaiming existing ones.
4. Constructing agricultural and domestic cisterns.
5. Establishing a sewage network and treatment units.
6. Supporting the health, waste and wastewater sector and finding a solution to this problem.
7. Supporting farmers with materials, guidance and greenhouses.
8. Developing the health center in the village.
9. Providing literacy programs and educational courses for the citizens.
10. Supporting university students mainly those majoring in uncommon fields of study.
11. Finding a solution to youth unemployment and creating job opportunities in the agricultural, industrial and governmental sectors.
12. Providing licenses for women and agricultural institutions and supporting them.

Locality Development Priorities and Needs

Kharbatha al Misbah suffers from a significant shortage of infrastructure and services. Table 13 shows the development priorities and needs in the village, according to the village council's perspective (Kharbatha al Misbah Village Council, 2011).

Table 21: Development Priorities and Needs in Kharbatha al Misbah

No.	Sector	Strongly Needed	Needed	Not a Priority	Notes
Infrastructural Needs					
1	Opening and Pavement of Roads	*			11km*
2	Rehabilitation of Old Water Networks	*			2km
3	Extending the Water Network to Cover New Built up Areas	*			1.5km
4	Construction of New Water Networks			*	
5	Rehabilitation/ Construction of New Wells or Springs			*	
6	Construction of Water Reservoirs			*	
7	Construction of a Sewage Disposal Network	*			3km
8	Construction of a New Electricity Network			*	
9	Providing Containers for Solid Waste Collection	*			600 containers
10	Providing Vehicles for Collecting Solid Waste			*	
11	Providing a Sanitary Landfill	*			
Health Needs					
1	Building of New Clinics or Health Care Centres			*	
2	Rehabilitation of Old Clinics or Health Care Centres	*			
3	Purchasing of Medical Equipment and Tools	*			
Educational Needs					
1	Building of New Schools	*			secondary level for males
2	Rehabilitation of Old Schools	*			secondary level for females
3	Purchasing of New Equipment for Schools	*			
Agriculture Needs					
1	Rehabilitation of Agricultural Lands	*			200 dunams
2	Building Rainwater Harvesting Cisterns	*			100 cisterns
3	Construction of Barracks for Livestock	*			10 barracks
4	Veterinary Services	*			
5	Seeds and Hay for Animals	*			170 tons per year
6	Construction of New Greenhouses	*			50 greenhouses
7	Rehabilitation of Greenhouses			*	
8	Field Crops Seeds	*			
9	Plants and Agricultural Supplies	*			

*5km are sub roads and 6km are agricultural roads

Source: Kharbatha al Misbah Village Council, 2011

References:

- *Applied Research Institute - Jerusalem (ARIJ)*, 2012. Geographic Information Systems and Remote Sensing Unit; Land Use Analysis (2010) – Half Meter High Accuracy. Bethlehem - Palestine.
- *Applied Research Institute - Jerusalem (ARIJ)*, 2012. Geographic Information Systems and Remote Sensing unit Database. Bethlehem - Palestine.
- *Applied Research Institute - Jerusalem (ARIJ)*. 2012. Water & Environment Research Unit Database (WERU). Bethlehem – Palestine.
- *Kharbatha al Misbah Village Council*, 2011.
- *Ministry of Education & Higher Education (MOHE)* - Ramallah, 2011. Directorate of Education; A database of schools (2010/2011). Ramallah – Palestine.
- *Palestinian Ministry of Agriculture (MOA)*, 2009. Directorate of Agriculture data (2008/2009). Ramallah - Palestine.
- *Palestinian Central Bureau of Statistics*. 2009. Ramallah, Palestine: General Census of Population and Housing Censuses, 2007.