

# **‘Azzun Town Profile (including ‘Isla & ‘Izbat at Tabib Localities)**



Prepared by



The Applied Research Institute – Jerusalem

Funded by



Spanish Cooperation

2013

## *Acknowledgments*

*ARIJ hereby expresses its deep gratitude to the Spanish Agency for International Cooperation for Development (AECID) for their funding of this project.*

*ARIJ is grateful to the Palestinian officials in the ministries, municipalities, joint services councils, village committees and councils, and the Palestinian Central Bureau of Statistics (PCBS) for their assistance and cooperation with the project team members during the data collection process.*

*ARIJ also thanks all the staff who worked throughout the past couple of years towards the accomplishment of this work.*

## Background

This report is part of a series of booklets, which contain compiled information about each city, town, and village in the Qalqiliya Governorate. These booklets came as a result of a comprehensive study of all localities in Qalqiliya Governorate, which aims to depict the overall living conditions in the governorate and presenting developmental plans to assist in improving the livelihood of the population in the area. It was accomplished through the "Village Profiles and Needs Assessment;" the project funded by the Spanish Agency for International Cooperation for Development (AECID).

The "Village Profiles and Needs Assessment" was designed to study, investigate, analyze and document the socio-economic conditions and the needed programs and activities to mitigate the impact of the current unsecure political, economic and social conditions in Qalqiliya Governorate.

The project's objectives are to survey, analyze and document the available natural, human, socioeconomic and environmental resources, and the existing limitations and needs assessment for the development of the rural and marginalized areas in Qalqiliya Governorate. In addition, the project aims to prepare strategic developmental programs and activities to mitigate the impact of the current political, social, and economic instability with the focus on the agricultural sector.

All locality profiles in Arabic and English are available online at <http://vprofile.arij.org>.

## Table of Contents

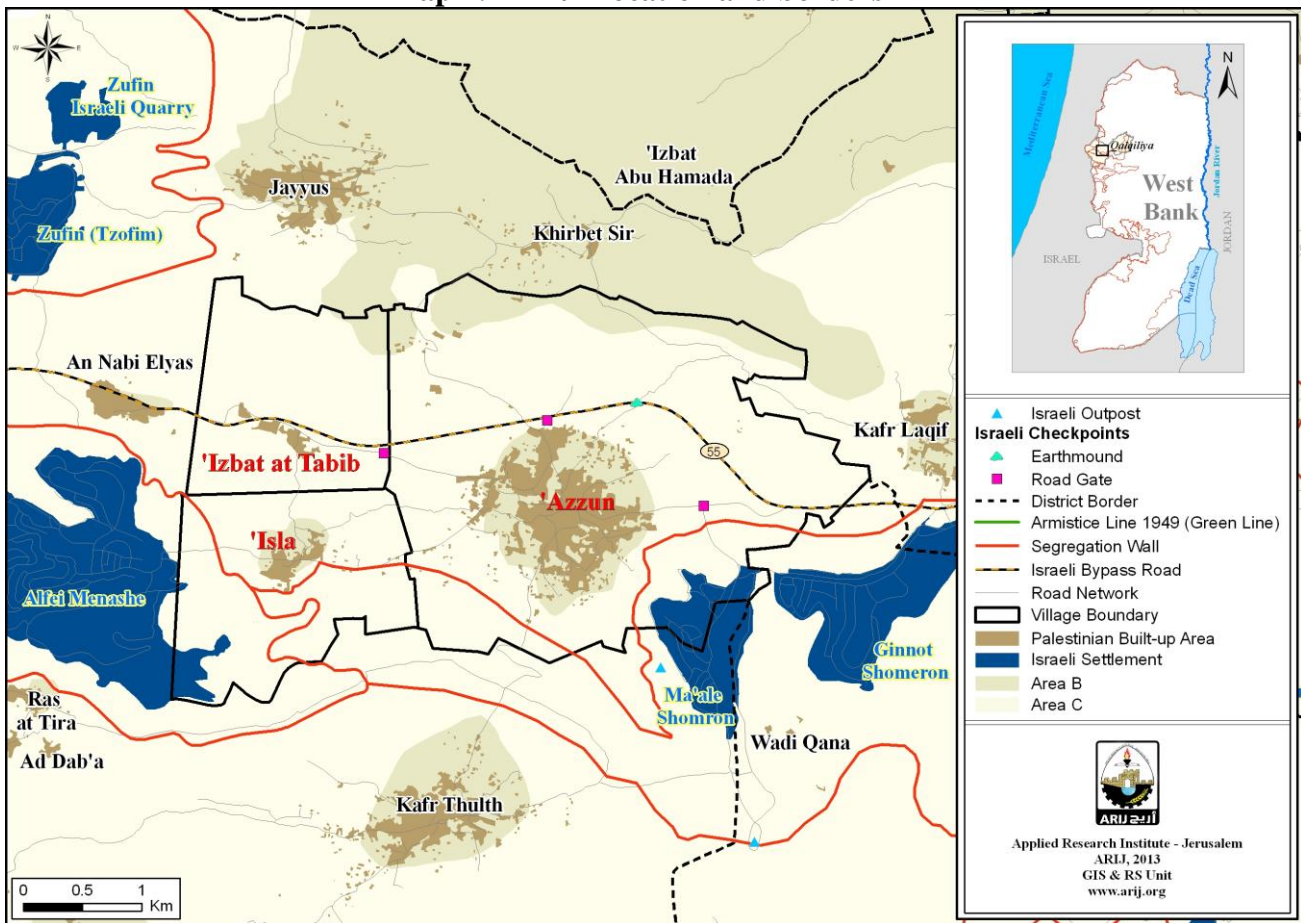
<i>Location and Physical Characteristics</i>	4
<i>History</i>	5
<i>Religious and Archaeological Sites</i>	6
<i>Population</i>	8
<i>Education</i>	8
<i>Health Status</i>	9
<i>Economic Activities</i>	10
<i>Agricultural Sector</i>	12
<i>Institutions and Services</i>	14
<i>Infrastructure and Natural Resources</i>	15
<i>Environmental Conditions</i>	17
<i>Impact of the Israeli Occupation</i>	18
<i>Development Plans and Projects</i>	30
<i>Implemented Projects</i>	30
<i>Proposed Projects</i>	31
<i>Locality Development Priorities and Needs</i>	33
<i>References</i>	34

# ‘Azzun Town Profile<sup>1</sup>

## Location and physical characteristics

‘Azzun (including ‘Isla & ‘Izbat at Tabib localities) is a Palestinian town in Qalqiliya Governorate, located 7-9km west of Qalqiliya City. It is bordered by Kafr Laqif village and Wadi Qana to the east, Kafr Thulth town to the south, An Nabi Elyas village to the west, and Jayyus and Khirbet Sir to the north (ARIJ-GIS, 2013) (see map 1).

**Map 1: ‘Azzun location and borders**



Source: ARIJ - GIS Unit, 2013

‘Azzun is located at an altitude of 226-244m above sea level with a mean annual rainfall of 587-589 mm. The average annual temperature is 19°C whilst the average annual humidity is approximately 62% (ARIJ-GIS, 2013).

Until 2012, ‘Isla & ‘Izbat at Tabib localities had been governed by a Projects Committee. However, in 2012, upon a decision by the Palestinian Ministry of Councils and the Ministry of Local

<sup>1</sup> The information listed in this profile includes the information of each of ‘Azzun town and ‘Isla & ‘Izbat at Tabib localities; based on the Local Government's decision in 2012 to merge the three localities under one local council.

Government, ‘Isla & ‘Izbat at Tabib localities were merged with the bigger locality of ‘Azzun town under ‘Azzun Municipal Council.

The classification of the residential areas borders has been adopted in this profile based on the administrative division of Palestinian communities, according to the Palestinian National Authority(PNA). This administrative division system has been developed by the Palestinian Ministry of Planning, the Ministry of Local Government, the Palestinian Central Bureau of Statistics(PCBS), and the Central Election Commission (CEC).

Since 1996, ‘Azzun has been governed by a Municipal Council which is currently administrated by 11 members appointed by the Palestinian National Authority (PNA). There are also 37 employees working in the council, whose permanent headquarters is included within the ‘Middle Joint Services Council.’ The Council possesses two vehicles for the collection of solid waste, a pick-up car and a small hammer truck (‘Azzun Municipal Council, 2012).

It is the responsibility of the Municipal Council to provide a number of services to the residents of ‘Azzun, including:

- The establishment and maintenance of the drinking water and electricity networks.
- Waste collection and street cleaning.
- Road rehabilitation, construction and paving.
- Implementation of projects and studies for the town.
- Organization of license processes.
- Protection of historical and archeological sites.
- Protection of governmental properties.
- Provision of educational kindergartens.
- Provision of offices for governmental services.
- Provision of transportation.
- Provision of an ambulance service.
- Provision of part of the sewerage network.
- Provision of a firefighting service.

(‘Azzun Municipal Council, 2012)

## History

‘Azzun town used to be called “‘Ein al ‘Ezz” meaning the spring of welfare, due to the large number of fruit trees located there. However it was later changed to ‘Azzun. ‘Isla locality (from the word ‘asal’ meaning honey, in indication to sweetness), was named due to the village being famous for the production of molasses which is produced from grapes. As for ‘Izbat at Tabib village; the word ‘‘izbat’ means estate while the word at ‘tabib’ (literally meaning the doctor) was taken in relation to the grandfather of the At Tabib family. It should be noted that ‘Izbat at Tabib village includes the locality of Mahattat Tahseen Mansur.

The town was established in 1187 A.D., with its residents descending from the Qaysar (lands of 1948) and Al Hijazz areas (‘Azzun Municipal Council, 2012).



Photo of 'Azzun

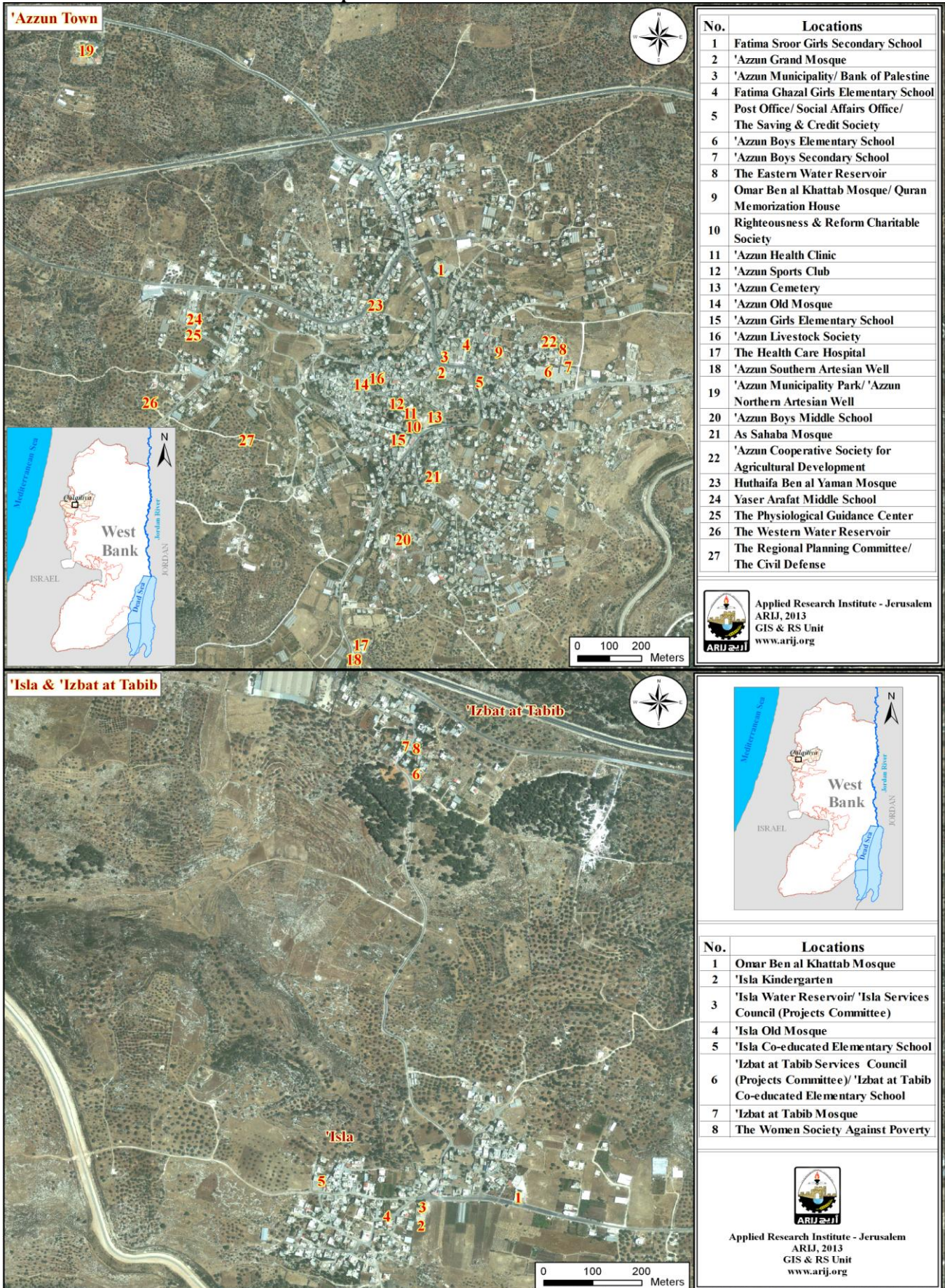


## Religious and archaeological sites

There are nine mosques in the town ('Azzun Grand, the Old, Huthaifa ben al Yaman, Salah ad Din, Omar ben al Khattab, Al Mansoor, As Sahaba, 'Isla Old and 'Izbat at Tabib Mosques). The town has several sites of archaeological interest including As Salah House, the martyrs' graves and Barshona archeological area. All of these sites are in need of restoration in order to be deemed tourist sites, as determined by the Ministry of Tourism and Antiquities ('Azzun Municipal Council, 2012) (see map 2).



Map 2: Main locations in 'Azzun Town



Source: ARIJ - GIS Unit, 2013



## Population

According to the Palestinian Central Bureau of Statistics (PCBS), the total population of ‘Azzun in 2007 was 8,650, of whom 4,469 were male and 4,181 female. There were 1,486 households registered as living in 1,621 housing units.

### Age groups and gender

The General Census of Population and Housing carried out by the PCBS in 2007 showed that the distribution of age groups in ‘Azzun was as follows: 43.1% were less than 15 years of age, 52.8% were between 15 and 64 years of age, and 3.4% were 65 years of age or older. Data also showed that the gender ratio of males to females in the town was 106.9:100, meaning that males and females constituted 51.7% and 48.3% of the population respectively.

### Families

‘Azzun residents are from several families, including ‘Adwan, Radwan, Salim, Hussein, Sweidan, Abu Hanniya, Odah, Hawashah, Tabib, Suleiman, Radi, Mas’ood and Abu Dayyah (‘Azzun Municipal Council, 2012).

### Immigration

The field survey conducted by ARIJ staff showed that approximately 25 people from different families have left the town since Al Aqsa Intifada in 2000 (‘Azzun Municipal Council, 2012).

## Education

According to the results of the PCBS Population, Housing and Establishment Census - 2007, the illiteracy rate amongst the population of ‘Azzun is approximately 5.4%, of whom 86% are females. Of the total population, 12.5% could only read and write with no formal education, 25.1% had elementary education, 26.3% had preparatory education, 18.9% had secondary education, and 11.7% had completed higher education. Table 1 shows the educational level in the town of ‘Azzun by gender and educational attainment in 2007.

**Table 1: ‘Azzun population (10 years and above) by sex and educational attainment**

Sex	Illiterate	Can read & write	Elementary	Preparatory	Secondary	Associate Diploma	Bachelor	Higher Diploma	Masters	PhD	Unknown	Total
M	46	385	828	877	646	166	235	3	18	4	1	<b>3,209</b>
F	284	386	719	742	520	97	191	4	5	0	2	<b>2,950</b>
<b>T</b>	<b>330</b>	<b>771</b>	<b>1,547</b>	<b>1,619</b>	<b>1,166</b>	<b>263</b>	<b>426</b>	<b>7</b>	<b>23</b>	<b>4</b>	<b>3</b>	<b>6,159</b>

Source: PCBS, 2009

There are nine public and one private school in the town, all of which are run by the Palestinian Ministry of Higher Education (Directorate of Education in Qalqiliya, 2012) (see table 2).

**Table 2: Schools in ‘Azzun by name, stage, sex, and supervising authority (2011/2012)**

School name	Supervising authority	Gender
‘Azzun Boys’ Secondary School	Government	Male
Fatima Sroor Girls’ Secondary School	Government	Female
‘Azzun Boys’ Elementary School	Government	Male
‘Azzun Girls’ Elementary School	Government	Female
Fatima Ghazal Girls’ Elementary School	Government	Female
The Martyr Yasir Arafat Boys’ Elementary School	Government	Male
‘Azzun Boys’ Middle School	Government	Male
Al Eyman Private Elementary School	Private	Mixed
‘Isla Co-educated Elementary School	Government	Mixed
‘Izbat at Tabib Co-educational Elementary School	Government	Mixed

**Source:** Directorate of Education in Qalqiliya, 2012

There are 2,968 students, 173 teachers, and 107 classes in thw town. The average number of students per teacher in the school is nearly 17, whilst the average number of students per class is approximately 28 (Directorate of Education in Qalqiliya, 2012).

There are also 5 kindergartens in ‘Azzun town which are run by different private organizations (Directorate of Education in Qalqiliya, 2012) (see table 3 below).

**Table 3: Kindergartens in ‘Azzun town by name and supervising authority**

Name of kindergarten	No. of classes	No. of teachers	Supervising authority
An Nahda Kindergarten	3	4	Private
Al Berr wal Islah Charitable Society Kindergarten	3	3	Private
Bara’em al Eyman Kindergarten	4	5	Private
Ar Rashid Kindergarten	2	3	Private
‘Isla Kindergarten	2	3	Private

**Source:** Directorate of Education in Qalqiliya, 2012

The education sector in ‘Azzun town faces a number of obstacles, mainly:

- The lack of classrooms in the elementary schools.
- The small size of yards and playgrounds at the schools.
- The lack of educational equipment and tools.
- The lack of extracurricular activities to improve student’s experiences.
- The inadequacy of some of the curriculums for students.
- The lack of a bus to transport students from ‘Isla to ‘Azzun town schools.

The harassment inflicted on the schools and students by the Israeli occupation forces and settlers, represented by the existence of permanent and partial checkpoints which hinder the access of students to their schools, in particular Martyr Yasir Arafat elementary school and ‘Azzun boys’ secondary school.(‘Azzun Municipal Council, 2012)

## Health status

‘Azzun has several health facilities; the Martyr Omar al Qasem Specialized Center, a governmental general physician clinic, a governmental medical lab, a governmental mother and child care center and a governmental pharmacy, in addition to an ambulance owned by the Red Crescent Society. In the absence of required health services or in emergencies, patients are transferred to Darweesh Nazzal Hospital, Qalqiliya Health Directorate or the UNRWA Hospital in Qalqiliya city (11km away) (‘Azzun Municipal Council, 2012).

The health sector in the town faces a number of obstacles and problems, principally (‘Azzun Municipal Council, 2012):

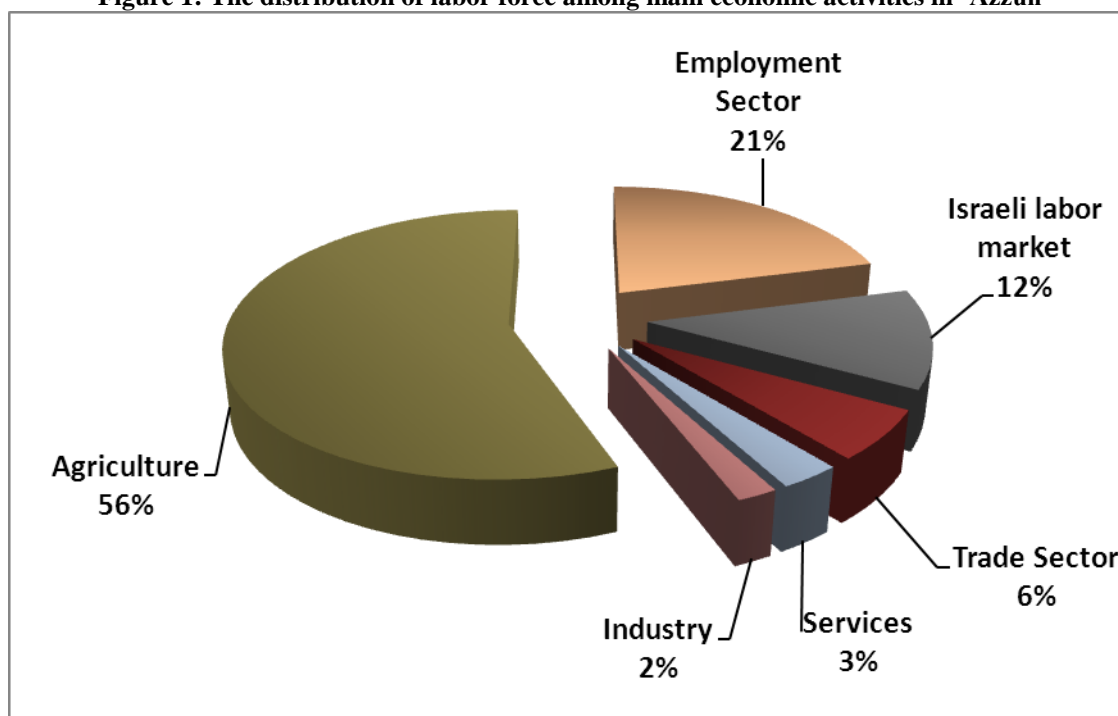
- The lack of specialized clinics.
- The lack of specialized governmental clinics, such as diabetics, nutritional or other clinics.
- The lack of necessary medicines at the pharmacy.
- The poor infrastructure of the health clinic building and its small size
- The lack of a radiology center

## Economic activities

The economy in ‘Azzun is dependent mainly on the agricultural sector, which absorbs 56% of the town’s workforce (‘Azzun Municipal Council, 2012) (see figure 1).

The results of a field survey conducted by the ARIJ team in 2012 for the distribution of labor by economic activity in ‘Azzun are as follows:

- Agriculture sector (56%)
- Government or other employees sector (21%)
- Israeli labor market (12%)
- Trade sector (6%)
- Services sector (3%)
- Industry (2%)

**Figure 1: The distribution of labor force among main economic activities in ‘Azzun**

Source: ‘Azzun Municipal Council, 2012

‘Azzun has 77 groceries, 7 fruit and vegetable stores, 5 bakeries, 4 butchers, 23 service stores, 21 different professional workshops, 3 olive oil presses, 4 stonemasons, 1 store for agricultural tools, 1 agricultural nursery and 4 sewing workshops (‘Azzun Municipal Council, 2012).

In 2012, the unemployment rate in ‘Azzun reached 39%. The groups most affected by the negative economic impact of the Israeli restrictions have been:

- Workers in the agriculture sector
- Former workers in Israel
- Workers in the trade sector
- Industrial workers
- Workers in the services sector

(‘Azzun Municipal Council, 2012)

### Labor force

According to the PCBS Population, Housing and Establishment Census - 2007, 32.4% of ‘Azzun’s labor force was economically active, of whom 82.6% were employed, 67.4% were not economically active, 58.7% were students, and 30.2% were housekeepers (see table 4).



Table 4: 'Azzun population (10 years of age and above) by sex and employment status

Sex	Economically active				Non-economically active						Not stated	Total
	Employed	Currently unemployed	Unemployed (never worked)	Total	Student	Housekeeping	Unable to work	Not working & not looking for work	Others	Total		
M	1,387	129	176	<b>1,692</b>	1,246	2	154	37	71	<b>1,510</b>	7	<b>3,209</b>
F	262	11	29	<b>302</b>	1,192	1,251	169	10	20	<b>2,642</b>	6	<b>2,950</b>
T	<b>1,649</b>	<b>140</b>	<b>205</b>	<b>1,994</b>	<b>2,438</b>	<b>1,253</b>	<b>323</b>	<b>47</b>	<b>91</b>	<b>4,152</b>	<b>13</b>	<b>6,159</b>

M: Male; F: Female; T: Total.

Source: PCBS, 2009

## Agricultural sector

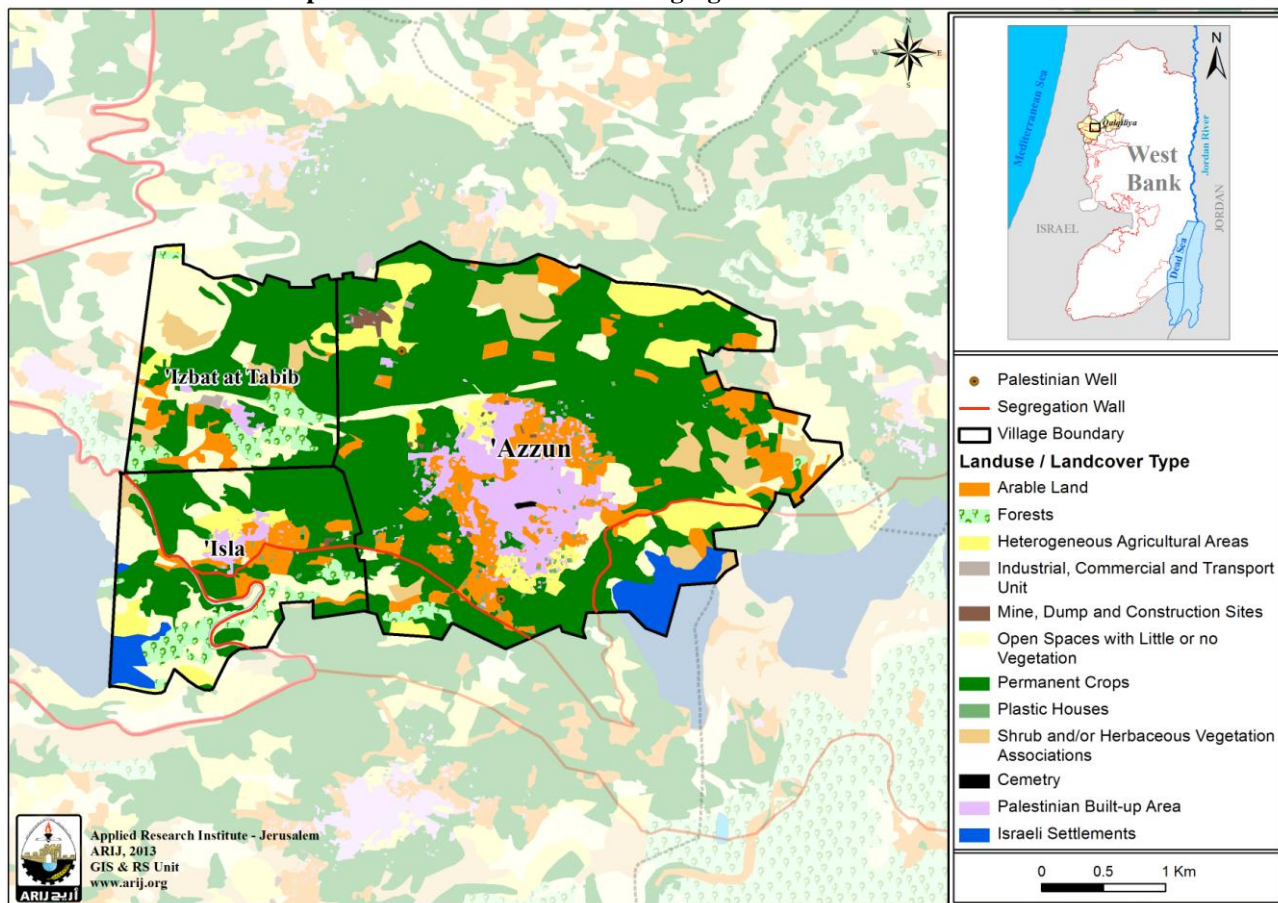
'Azzun has a total area of approximately 14,902 dunums of which 10,871 are arable land and 1,028 dunums are registered as residential land (see table 5 and map 3).

Table 5: Land use and land cover in 'Azzun town (area in dunums)

Total area	Built up area	Agricultural area (10,871)				Inland water	Forests	Open spaces	Area of industrial, commercial & transport unit	Area of settlements, military bases & Wall zone	Cemeteries
		Permanent crops	Green-houses	Range-lands	Arable lands						
14,902	1,028	8,491	70	710	1,600	0	582	1,841	90	485	7

Source: ARIJ – GIS Unit, 2013

Map 3: Land use/land cover and Segregation Wall in ‘Azzun Town



Source: ARIJ - GIS Unit, 2013

Table 6 shows the different types of rain-fed and irrigated open-cultivated vegetables in ‘Azzun. The most commonly cultivated crops within this area are white cabbages, green beans and snake cucumber, there are a total area of 192 dunums of greenhouses in the town and the most commonly cultivated crops within this cucumber

Table 6: Total area of rain-fed and irrigated open cultivated vegetables in ‘Azzun (area in dunums)

Fruity vegetables		Leafy vegetables		Green legumes		Bulbs		Other vegetables		Total area	
Rf.	Irr.	Rf.	Irr.	Rf.	Irr.	Rf.	Irr.	Rf.	Irr.	Rf.	Irr.
17	8	0	27	19	9	7	0	0	15	43	59

Rf.: Rain-fed; Irr.: Irrigated.

Source: Ministry of Agriculture - Qalqiliya, 2010

Table 7 shows the different types of fruit trees planted in the area. ‘Azzun is famous for olive cultivation and there are approximately 10,593 dunums of land planted with olive trees in the town.

Table 7: Total area of horticulture and olive trees in ‘Azzun (area in dunums)

Olives		Citrus		Stone fruits		Pome fruits		Nuts		Other fruits		Total area	
Rf.	Irr.	Rf.	Irr.	Rf.	Irr.	Rf.	Irr.	Rf.	Irr.	Rf.	Irr.	Rf.	Irr.
10,593	0	0	76	17	2	0	0	12	0	24	5	10,646	83

Rf.: Rain-fed; Irr.: Irrigated.

Source: Ministry of Agriculture - Qalqiliya, 2010

In terms of field crops and forage in ‘Azzun, cereals (particularly wheat) are the most cultivated, covering an area of approximately 215 dunums (see table 8).

**Table 8: Total area of forage and field crops in ‘Azzun (area in dunums)**

Cereals		Bulbs		Dry legumes		Oil crops		Forage crops		Stimulating crops		Other crops		Total area	
Rf.	Irr.	Rf.	Irr.	Rf.	Irr.	Rf.	Irr.	Rf.	Irr.	Rf.	Irr.	Rf.	Irr.	Rf.	Irr.
215	0	6	20	13	0	2	0	80	0	0	0	15	25	331	45

Rf.: Rain-fed; Irr.: Irrigated.

Source: Ministry of Agriculture - Qalqiliya, 2010

The field survey conducted by ARIJ team shows that 12% of the residents in ‘Azzun rear and keep domestic animals such as sheep and goats (see table 9).

**Table 9: Livestock in ‘Azzun**

Cows*	Sheep	Goats	Camels	Horses	Donkeys	Mules	Broilers	Layers	Bee hives
77	2,207	348	0	0	0	0	168,000	4,000	42

\*Including cows, bull calves, heifer calves and bulls

Source: Palestinian Ministry of Agriculture - Qalqiliya, 2010

There are approximately 33km of agricultural roads in the town, divided as follows:

**Table 10: Agricultural roads in ‘Azzun town and their lengths**

Suitability of agricultural roads	Length (km)
For vehicles	10
For tractors and agricultural machinery only	13
For animals only	6
Unsuitable	4

Source: ‘Azzun Municipal Council, 2012

The agricultural sector in the town faces some problems, including:

- The confiscation of lands by the Israeli government.
- The lack of economic feasibility for agricultural investment.
- The lack of capital for agricultural projects.
- The lack of water resources.
- The lack of pastures and green areas.
- The high prices of feed and pesticides.
- The inability to reclaim the agricultural lands.
- The existence of the Segregation Wall which divides the land.

('Azzun Municipal Council, 2012)

## Institutions and services

‘Azzun town has a post office, an office for the Ministry of Social Affairs, a fire brigade center and a National Security Center, in addition to a number of local institutions and associations that provide services to various sectors of society. These include:

- **‘Azzun Municipal Council:** Founded in 1996 by the Ministry of Local Government, with the aim of addressing different issues concerning the town and providing various services and infrastructure to its residents.
- **Al Berr wal Islah Charitable Society:** Founded in 1987 by the town’s residents, it provides social, cultural and development services.

- **The Development & Creativity Society:** Founded in 2010 by the town's younger generation, providing the youth with cultural and social services.
- **The Livestock Society:** Founded in 1995 by the Ministry of the Interior. The society is concerned with providing guidance and awareness services related to livestock.
- **The Organic Oil Society:** Founded in 2010 by the Ministry of the Interior with the aim to provide services to improve the quality of olive oil
- **The General Union Society for Farmers:** Founded in 2001 by the Ministry of the Interior, the service provides agricultural advice and guidance.
- **'Azzun Youth Sports Club:** Founded in 1978 by the town's young people with the aim of providing sports and educational activities.
- **The Rural Saving & Credit Society:** Founded in 2005 by the Ministry of the Interior, with the aim of proving loans.
- **The Animal & Plant Development Society:** Founded in 2011 by the Ministry of the Interior, with the aim of providing guidance and awareness services in the fields of animals and plants.
- **The Palestinian Guidance Center:** Founded in 2000 by a foreign donor, aiming to provide health and guidance services as well as rehabilitation services for the disabled.
- **'Azzun Zakat Committee:** Founded in 1993 by the town residents and concerned with providing assistance to poor families and orphans.
- **The Refugees Committee:** Founded in 2002 by the Refugees Department and concerned with the town's refugee issues.
- **The Popular Resistance Committee:** Founded in 2003 by the residents of the locality, concerned with fighting the Wall and the Israeli plans.
- **Rubu' al Khair Charitable Society:** Founded in 2010 by the Ministry of Social Affairs and interested in providing women with development projects, in addition to training and education in different fields.
- **The Women's Anti-Poverty Society:** Founded in 2010 by women from 'Izbat at Tabib with the aim of providing women with manual labor tasks.
- **'Izbat at Tabib Cooperative Society:** Founded in 2009 by the Ministry of Labor.

('Azzun Municipal Council, 2012)

## Infrastructure and natural resources

### Electricity and telecommunication services:

'Azzun, 'Isla and 'Izbat at Tabib have each been connected to public electricity networks since 1983, 1986 and 1985 respectively. All are served by the Israeli Qatariya Electricity Company, which is the main source of electricity in the localities. 100% of the housing units in the localities are connected to the network. However, the town does suffer some obstacles in the electricity sector, namely:

- Exposed wires
- The need for new adapters
- Aged network in need of renewal
- High price of electricity
- Lack of capital for the establishment of new infrastructure projects
- The need to expand the network to cover all new areas

('Azzun Municipal Council, 2012)



‘Azzun, ‘Isla and ‘Izbat at Tabib are also connected to telecommunication networks and approximately 90%, 30% and 20% of the housing units within the localities’ boundaries are connected to phone lines, respectively (‘Azzun Municipal Council, 2012).

### Transportation services:

There are 40 taxis in ‘Azzun, which are considered insufficient, thus, the residents use their own private cars, travel on foot or on animals. The lack of vehicles in the town in addition to the existence of earth mounds and military checkpoints and the poor infrastructure of roads are considered the main obstacles faced by the town’s residents (‘Azzun Municipal Council, 2012).

There are 34.5km of main roads and 17.65km of secondary roads in ‘Azzun (‘Azzun Municipal Council, 2012) (see table 10).

**Table 10: Roads in ‘Azzun town**

Status of internal roads	Road length (km)	
	Main	Secondary
1. Paved and in good condition	13	6.65
2. Paved and in poor condition	6.3	1.5
3. Unpaved	15	9.5

Source: ‘Azzun Municipal Council, 2012

### Water resources:

‘Azzun is provided with water by the West Bank Water Department and ‘Azzun Municipality through the ‘Azzun northern well, which supplies the residents with water through the public water network established in 1981. All housing units are connected to the network (‘Azzun Municipal Council, 2012).

The quantity of water supplied to ‘Azzun town in 2012 was recorded as approximately 488,000 cubic meters per year (‘Azzun Municipal Council, 2012). Therefore the estimated rate of water supply per capita is approximately 133 liters per day. However, no ‘Azzun citizen consumes this amount of water due to water losses, which are estimated at 20% (‘Azzun Municipal Council, 2012). These losses happen at the main source, along major transport lines, in the distribution network and at the household level. Therefore the rate of water consumption per capita in ‘Azzun is more likely to be 107 liters per day (‘Azzun Municipal Council, 2012). The average water consumption of ‘Azzun residents is considered good compared with the minimum quantity of 100 liters per capita per day proposed by the World Health Organization. Each cubic meter of water from the public network costs 4 NIS (‘Azzun Municipal Council, 2012).

In addition, the town has 320 individual household rainwater harvesting cisterns, as well as 3 water reservoirs; two with a 500m<sup>3</sup> and one with a 200m<sup>3</sup> capacity. There is also an artesian well located in the town called the ‘Azzun northern well, which supplies the town with water through the public network. This is in addition to Aal Adwan southern well which is privately owned and has a pumping rate of 300m<sup>3</sup> per day. This well is used for agricultural purposes (‘Azzun Municipal Council, 2012).

**Sanitation:**

‘Azzun and ‘Isla localities lack a public sewerage network and most of the population use cesspits and septic tanks as the main means of wastewater disposal. ‘Izbat at Tabib has had a sewerage network since 2003 connected to approximately 45% of the housing units, but the rest of housing units use cesspits as the main means of wastewater disposal (‘Azzun Municipal Council, 2012).

Based on the estimated daily per capita water consumption, the approximate quantity of wastewater generated per day is 856m<sup>3</sup>, or 312,000m<sup>3</sup> annually. At the individual level, it is estimated that the per capita wastewater generation is approximately 85 liters per day. Part of the wastewater amount is collected through the sewerage network while the rest of wastewater is collected by cesspits and septic tanks and discharged by wastewater tankers directly in to open areas or nearby valleys with little regard for the environment. It is noted that there is no wastewater treatment either at the source or at the disposal sites and this poses a serious threat to the environment as well as to public health (ARIJ - WERU, 2013).

**Solid waste management:**

The Joint Services Council for Solid Waste, in cooperation with ‘Azzun Municipality, is responsible for the collection and disposal of solid waste generated by citizens and establishments in the town. As the process of solid waste management is costly, a monthly fee of 17 NIS per household is charged to the population and facilities served by domestic solid waste collection and transportation services. Approximately 70% of these fees are collected from the citizens (‘Azzun Municipal Council, 2012).

Most of the population in ‘Azzun benefits from the solid waste services, whereby waste is collected from households, institutions, shops and public squares in plastic bags and placed in 129 containers (of 1m<sup>3</sup> capacity), located at various places in the town. The Joint Council and ‘Azzun Municipality collect the solid waste three times a week and transport it using a waste vehicle to Zahret al Finjan dumping site in Jenin Governorate, 50-70km from the town, where it is subsequently buried in an environmentally friendly way (‘Azzun Municipal Council, 2012).

The daily per capita rate of solid waste production in ‘Azzun is 1.05kg. Thus the estimated amount of solid waste produced per day from the ‘Azzun residents is nearly 10.5 tons, or 3,841 tons per year (ARIJ-WERU, 2013).

**Environmental conditions**

Like other towns and villages in the Governorate, ‘Azzun experiences several environmental problems which must be addressed and solved. These problems can be identified as follows:

**Water crisis**

Water is cut off by the West Bank Water Department for long periods of time due to the Israeli control over Palestinian water resources, which causes problems in the organization of water pumping and its distribution amongst the population. The West Bank Water Department distributes water to various areas on an interval basis because the quantity of water available is not sufficient to simultaneously meet everyone’s needs. The West Bank Water Department also purchases water from

Israeli companies in order to meet the citizens' water needs and mitigate the high percentage of water losses due to the aged network which is in need of restoration.

### **Wastewater management**

The absence of a public sewage network to cover all areas in the town means that 'Azzun residents are forced to use unhygienic cesspits for the disposal of wastewater and/or to discharge wastewater into the streets, as citizens cannot afford the high cost of sewage tankers. This is particularly common in winter. These methods facilitate environmental damage, health problems and the spread of epidemics and diseases in the town. This wastewater also contaminates the ground water because most cesspits are built without lining to avoid the need to use sewage tankers and allow wastewater to enter into the ground. The untreated wastewater collected from cesspits by sewage tankers is then disposed of in open areas without concern for the damage it causes to the environment and to residents' health.

### **Solid Waste Management**

'Azzun town does not suffer any problems concerning the management of solid waste. This is due to the adequate organization and management of waste disposal services by 'Azzun Municipality and the Joint Council for the Management of Solid Waste. Waste is disposed of in Zahret al Finjan landfill in Jenin Governorate which is the main environmentally sound landfill serving the town, in addition to most of the localities in Qalqiliya Governorate.

## **Impact of the Israeli Occupation**

### **Geopolitical status in 'Azzun**

According to the Oslo II Interim Agreement signed on 28<sup>th</sup> September 1995, between the Palestinian Liberation Organization (PLO) and Israel, 'Azzun town was divided into areas "B" and "C". Approximately 2,342 dunums (24.7% of the towns total area) was assigned as area B, where the Palestinian National Authority (PNA) has complete control over civil matters but Israel continues to have overriding responsibility for security. As area B constitutes most of the inhabited Palestinian areas including municipalities, villages and some refugee camps. It is worth mentioning that The majority of the population of 'Azzun town reside in area B. While, the rest of the village's area, constituting 7,130 dunums (75.3 % of the total), is classified as area C, where Israel retains full control over security and administration related to the territory. In area C, Palestinian building and land management is prohibited without the prior consent or authorization of the Israeli Civil Administration. Most of the lands lying within area C are agricultural areas, open spaces and confiscated land which was taken for the purpose of building Israeli settlements on the village's territory (see table 11).

**Table 11: The geopolitical divisions of 'Azzun according to the Oslo II Interim Agreement in 1995**

Area	Area in dunums	Percentage of total town area
Area A	0	0
Area B	2342	24.7
Area C	7130	75.3
Nature reserve	0	0
<b>Total</b>	<b>9472</b>	<b>100</b>

Source: ARIJ-GIS, 2013

## **Israeli occupation practices on 'Azzun Town**

'Azzun has been subjected to numerous Israeli confiscations for the benefit of the various Israeli objectives, demonstrated by the construction of Israeli settlements and Israeli bypass roads on the village territory. This is in addition to the segregation plan developed through the segregation wall which aims to isolate thousands of dunums of agricultural land and open areas in the town. The following is a breakdown of the Israeli confiscations on 'Azzun town:

Israel confiscated approximately 268 dunums (2.8%) of 'Azzun land, to establish Ma'ale Shomron settlement. This settlement is considered part of the larger Shomron settlement bloc. It is important to note that only part of this settlement was established on the town lands of 'Azzun, while the remaining settlement area was established on the lands of other villages such as Kafr Thulth, and Deir Istiya. Moreover, the settlement of Karne Shomron forms a key component of the larger 'Kedumim settlement bloc, which Israel is seeking to include within its borders by constructing the Separation Wall in the area.

### **The Israeli Segregation Wall plan in 'Azzun Town**

Implementation of the Israeli segregation Wall plan on the ground has been ongoing since 2002. This began after the Israeli Authorities decided to implement the separation policy between Israel and the occupied Palestinian territories by establishing an isolation zone in the western part of the West Bank. This isolation zone stretches from the north to the south of the West Bank confiscating the most fertile agricultural lands and isolating Palestinian societies and communities from one another. By connecting most of the Israeli settlements in an attempt to legitimize the route of the Separation Wall inside the West Bank, the isolation area also undermines the regional interaction between Palestinian towns and villages, and controls the natural resources. The construction of the wall has ignored the ruling of the International Court of Justice (ICJ) made on July 9th 2004, in which they recommended that the route of the Wall should be changed and Palestinians affected by the Wall in should be offered compensation. However, on April, 30th 2007, rather than changing the wall route to reduce the negative impact on these villages, Israel disregarded the human rights of these Palestinians by implementing more changes to the route, intending instead to connect the Israeli settlements to one another. These changes worsened the situation for the affected villages as they became more isolated from one another. According to the latest amendments of the Wall route, 2.1 km of the Wall were built on the village lands of 'Azzun from the south-western side. Israel Plans to build 1.6 km from the Separation Wall, on the town lands of 'Azzun from the south-western side. In general, the Wall will isolate 1,320 dunums approximately (14% of the town's total area). Israel is trying to control the largest area possible of Palestinian lands through the Separation Wall, in order to



guarantee the expansion of Israeli settlements even after including them to their new illegal borders. (See table 12).

**Table 12: Land classification of the isolated area behind the Segregation Wall in 'Azzun town**

No.	Land classification	Area (dunums)
1	Israeli Settlements	268
2	Forests	52
3	Open spaces	101
4	Agricultural Areas	807
5	Shrubs	90
6	Palestinian Built up Area	2
7	<b>Total</b>	<b>1,320</b>

Source: ARIJ-GIS, 2013

The Israeli occupation claims that the goal behind the construction of the Separation Wall in the occupied Palestinian territories is due to security reasons under the pretext of protecting Israeli citizens, but on the ground, some 733 square kilometers of Palestinian territories, 13% of the West Bank will be isolated between the Separation Wall and the Armistice Line of 1949 (Green Line). There will also be an annexation of 107 Israeli settlements constituting more than 85% of the Israeli settlers' living in the occupied territories of the West Bank. It seems that Israel has begun the second phase of what it is seeking to achieve by building the Segregation Wall, after the isolation of the Palestinian territories from the main communities in the West Bank, Israel is taking advantage of the uninhabited spaces to build roads linking settlements with Israel, following the same segregation pattern followed in the settlement construction process. Israel is seeking to link the Israeli settlements in the West Bank with the cities and Israeli communities which are adjacent to the Green Line (the armistice line of 1949) in an effort to undermine the development of the Green Line and redraw their eastern border as part of a greater scheme to take more land and resources from the West Bank.

### **The Israeli bypass roads on the Lands of 'Azzun Town**

The concept of "Bypass roads" began to appear during the time of the Oslo Agreement in September-1993 (signed between the PLO and Israel) and refers to the roads built by the Israelis in the occupied Palestinian territories in an attempt to link Israeli settlements in the West Bank with each other and Israel. Since then, Israel have doubled their efforts to increase the size of bypass roads in the occupied Palestinian territories which will affect the peace negotiations with the Palestinians, and the establishment of a Palestinian state. During the last 46 years of occupation, Israel has built 810 kilometers of bypass roads, facilitating the connection of the illegal Israeli settlements in the occupied West Bank. According to the Oslo Agreement that was signed between the Palestinians and the Israelis, the Palestinians were allowed to use these roads, but after the start of the second Intifada on 30<sup>th</sup> September 2000, the Israeli occupation authorities prevented Palestinians from using these roads under the pretext of 'security concerns'. It is worth mentioning that the establishment of the Israeli bypass roads in the occupied Palestinian territories has contributed to the weak development of Palestinian communities in the West Bank through making real obstacles in the areas that is marked for Palestinian development. In 2004, Israel proposed a network of bypass roads that transformed the path way of the Palestinians and prevented them from using Israeli roads forcing them to relocate their path way to another road network entirely separated from Israeli bypass roads, ensuring Israeli use of these roads, helping Israel tighten its control on Palestinian movements and

restricting their rights. The Palestinian town of 'Azzun is in a similar position to other Palestinian villages in the occupied Palestinian territories having had land confiscation because of the establishment of the Israeli bypass road No. 55 which cuts the town through the middle. Following the outbreak of the second Palestinian intifada in late September 2000, the Israeli occupation authorities increased their control over bypass road No. 55 and prevented Palestinians from 'Azzun and neighboring Palestinian villages from using the bypass road through settler violence towards Palestinians such as stone throwing.

### **Previous Israeli Violations Against 'Azzun Land and property**

On January, 17<sup>th</sup>, 2010 the Regulation and Building Committee of the Israeli Civil Administration issued several military order notifications to several families from 'Azzun town which included warnings to stop construction of industrial and residential buildings, under the pretext of illegal construction since the targeted constructions lie in areas classified as area C. The facilities that have been notified belongs to the citizen Mohammad Abed Al Latif Suwaidan, and the citizen Ibrahim Hussain Ghannam.

On July, 18<sup>th</sup> 2012 Israeli occupation authorities handed over two warning notifications from the Inspection Subcommittee of the Israeli Civil Administration, to two families from 'Azzun town. These military notifications order them to stop construction of their residential buildings, under the pretext of illegal construction since the targeted constructions lies in areas classified as area C. That, according to the interim Oslo II Agreement, is under full Israeli control. The facilities that had been notified belonged to the citizen Hani Salah Shbeta and the citizen Salah Farouq Shbeta.

The Israeli occupation authorities, accompanied by a large number of military vehicles and bulldozers raided the western entrance to the town of Azzun and the part that was demolished belong to the citizen Ibrahim Hussein Ghannam, under the pretext of an unauthorized building, the building is location areas is classified as "c", which, according to the Oslo II Agreement, It is under full Israeli control. The target building that have been notified to stop the construction work under the pretext of building without permission was demolished, and the Israeli occupation authorities did not give a chance to the owners to proceed with obtaining the necessary licenses, and as a result the house have been demolished.

Moreover, the village of 'Azzun suffered from several Israeli settler attacks from Ma'ale Shomron settlement, located to the east of 'Azzun town. One of these attacks occurred on October, 31<sup>st</sup>, 2013, when the settlers destroyed 300 olive trees owned by residents Saleh and Ahmed Mohammed Radwan.

### **The Israeli Checkpoints on 'Azzun Town**

Following the outbreak of the second Palestinian Intifada on September, 2000, the Israeli authorities tightened Israeli closures against Palestinian towns and villages, Israel closed the entrance roads of Palestinian villages which connected them to main streets (especially the roads that are used by Israeli settlers as well), forcing villagers to walk long distances in an attempt to find an alternative to exit, or to access their villages. The Israeli occupation authorities to found alternative routes to Palestinian villages in order to communicate with each other by digging tunnels beneath the Israeli bypass roads. This process was part of the Israeli policy to ensure the uniqueness of Israeli use of these roads, announced as a policy in October 2004. Israel proposed a network of bypass roads that

transformed the existing path way of Palestinians and prevented them from using Israeli roads, moving their path way to another road network is entirely separated from the Israeli bypass roads. This meant Israel could tighten their hold over Palestinian movements and deny them access to freedom of movement rights. The Palestinian town of 'Azzun was targeted by the Israeli occupation authorities. Following the outbreak of the second Palestinian intifada in late September 2000, the Israeli occupation authorities increased control over the bypass road number 55 preventing Palestinians from 'Azzun and neighboring Palestinian villages from using the bypass road, those who did were subjected to settler violence such as stone throwing.

According to the Oslo Agreement that was signed between the Palestinians and the Israelis, the Palestinians were allowed to use these roads, but after the start of the second Intifada on 30 September 2000, the Israeli occupation authorities prevented Palestinians from using these roads under the pretext of 'security concerns'. It is worth mentioning that the establishment of Israeli bypass roads in the occupied Palestinian territories has contributed to poor development of the Palestinian communities in the West Bank by making real obstacles in the areas that is marked for Palestinian development.

### **Military orders for 'Azzun Town**

- Israeli Military Order No. 6/15 / T : issued on February 6th 2007, confiscated an area of 24.6 dunums the town lands of 'Azzun and Kafr Laqif for the purpose of building the Segregation Wall in the area.
- Israeli Military Order No. 07/09 / T : issued on February 6<sup>th</sup> 2007, to confiscate an area of 79.6 dunums from the town lands of 'Azzun and Jayyus for the purpose of building the Segregation Wall in the area.
- Israeli Military Order No. 15/ 06 / T : issued on December 25<sup>th</sup>. 2006, and confiscated an area of 279 dunums of the town lands of 'Azzun, Kafr Laqif and Hajja for the purpose of building the Segregation Wall in the area.
- Israeli Military Order No. 15/ 06 / t (Amendment to Border No. 2) issued on February, 15<sup>th</sup>, 2007, and confiscated an area of 42.2 dunums of the lands of 'Azzun and Kafr Laqif for the purpose of building the Segregation Wall in the area. This change came up to amend a section of the Separation Wall which is intended to be established on the territory of these two villages .
- Israeli Military Order No. 32 / 02 / T : issued on September, 26<sup>th</sup>, 2002, and confiscated an area of 449 dunums of the town lands of 'Azzun, Habla and Ras 'Atiya for the purpose of building the Segregation Wall in the area.
- Israeli Military Order No. 37 / 02 / T : issued on the February, 5<sup>th</sup>, 2002, and confiscated an area of 560 dunums of the town lands of 'Azzun ,Jayyus and Qalqiliya for the purpose of building the Segregation Wall in the area.
- Israeli Military Order No. 43/ 02 / T : issued on November, 8<sup>th</sup>.2002, and confiscated an area of 239.5 dunums from the villages of 'Azzun , Qalqiliya and Habla for the purpose of building the Segregation Wall in the area.

- Israeli Military Order No. 65 / 05 / T : issued on October ,6<sup>th</sup>, 2005 and confiscated an area of 224 dunums from the villages of Kafr Thulth, ‘Azzun for the purpose of building the Segregation Wall in the area.
- Israeli Military Order No. 40 / 02 / T (Amendment to border No. 2 ) issued on September,26<sup>th</sup>,2002, and confiscated an area of 894.5 dunums of the village lands of ‘Azzun, Habla and Kafr Thulth. This was a military order to modify sections of the Segregation Wall on the land villages of the previous lands.
- Israeli Military Order No. 95/20 / T : issued on February, 1<sup>st</sup>, 1995, and confiscated an area of 17.4 dunums of the land of ‘Azzun and Qalqiliya for military purposes , in order to establish an Israeli camp.

## Geopolitical status in 'Isla

According to the Oslo II Interim Agreement signed on 28<sup>th</sup> September 1995, between the Palestinian Liberation Organization (PLO) and Israel, 'Isla was divided into areas “B” and “C”. Approximately 217dunums (7.5% of the village’s total area) were assigned as area B, where the Palestinian National Authority (PNA) has complete control over civil matters but Israel retains overriding responsibility for security, area B constitutes most of the inhabited Palestinian areas including municipalities, villages and some refugee camps, which means that most of the population of 'Isla reside in area B. The remaining village’ area, constituting 2,669 dunums (92.5 % of the total), is classified as area C, in which Israel retains full control over security and administration relating to the territory. In area C, Palestinian building and land management is prohibited without prior consent or authorization from the Israeli Civil Administration. Most of the lands lying within area C are agricultural areas and open spaces, land which was confiscated were taken for the purpose of constructing an Israeli settlements on the village’s territory (see table 13).

**Table 13: The geopolitical divisions of 'Isla according to the Oslo II Interim Agreement in 1995**

Area	Area in dunums	Percentage of total village area
Area A	0	0
Area B	217	7.5
Area C	92.5	2,669
Nature reserve	0	0
<b>Total</b>	<b>2,886</b>	<b>100</b>

Source: ARIJ-GIS, 2013

## Israeli occupation practices on 'Isla village

'Isla has been subjected to numerous Israeli confiscations for the benefit of various Israeli objectives, demonstrated by the construction of Israeli settlements and the Segregation Wall on the village territories. The following is a breakdown of the Israeli confiscations on 'Isla village:

Israel confiscated 131 dunums of land in 'Isla village (4.5% of the village lands), to establish the ‘Alfei Menashe’ settlement. Only part of this settlement was established on the village lands of 'Isla, while the remaining settlement area was established on the lands of other villages such as Ras at Tira, Arab ar Ramadin al Janubi, 'Arab Abu Farda, An Nabi Elyas, 'Izbat al Ashqar, and Wadi ar



Rasha. The settlement of 'Alfei Menashe' is considered to be one of the most important settlements for Israel. This is due to its strategic geographical location, as well as the large area which it occupies, it is the largest Israeli settlement in Qalqiliya Governorate in terms of area size and population. The settlement of 'Alfei Menashe' also forms a key component of the large 'Ariel Kedumim' settlement bloc, which Israel is seeking to include within its borders by constructing the Separation Wall on West Bank lands effectively including all settlements within the wall as part of greater Jerusalem

### **Israeli settlements with “National Priority”**

On December 12, 2009, the Israeli cabinet approved a new map on national priority areas in Israel that was presented by the Israeli Prime Minister, Benjamin Netanyahu, and it was decided to give funding to dozens of Israeli settlements in the occupied Palestinian territory. The total budget of this plan is about 2 billion shekels, of which 110 million shekels were designated for Israeli settlers living in Israeli settlements in the occupied Palestinian territory. The map included 90 Israeli settlements in the West bank, of which, Alfe Menashe settlement was included. Whilst the Israeli government is promoting settlement construction in Israeli settlements in the occupied Palestinian territory, especially in settlements in the eastern segregating zone where focus is being placed on changing areas into areas “suitable for tourist investment”. This will be achieved by providing them with the primary needs to attract more Jewish immigrants to live and work in the area that is, in addition to settlements in the western segregation zone and those located in the corridor area “as defined by Israel”. Such behavior displaces Palestinians in the area from their homes and land, and imposes obstacles which stand in the face of Palestinian societal growth, development and construction, especially in the eastern segregation zone. It also ignores the Right of Return of Palestinian refugees’ who were displaced from their home towns by Israel in 1967, and manipulates the demographics of area for the benefit of its colonial ambitions.

### **The Israeli Segregation Wall plan in 'Isla village**

Implementation of the Israeli Segregation Wall plan on the ground has been ongoing since 2002. This began after the decision of the Israeli Authorities to implement the separation policy between Israel and the occupied Palestinian territories by establishing an isolation zone in the western part of the West Bank. This isolation zone stretches from the north to the south of the West Bank, thereby confiscating the most fertile agricultural lands, isolating Palestinian communities and separating them from one another. By connecting most of the Israeli settlements in an attempt to legitimize the route of the Separation Wall inside the West Bank, the isolation area also undermines the regional interaction between Palestinian towns and villages, and controls the natural resources. The construction of the wall has ignored the ruling of the International Court of Justice (ICJ) made on July 9th 2004, in which they recommended that the route of the Wall should be changed and Palestinians affected by the Wall in affected areas should be offered compensation. However, in 2007, rather than changing the wall route to reduce the negative impact on these villages, Israel disregarded the human rights of these Palestinians by implementing more changes to the route, intending instead to connect the Israeli settlements to one another. These changes worsened the situation for the affected villages causing them to become increasingly isolated from one another.

According to the latest amendments of the Wall route, 4.8km from the Wall were built on the village lands of 'Isla from the eastern side. Moreover, if the Isolation Plan is enforced on the village lands of 'Isla, then the Wall will isolate approximately 1722 dunums (59.6% of the village's total area). These lands include agricultural areas and open spaces, which are necessary for the villagers to build and expand upon in the future. Israel's goal through the establishment of the wall is to try and control the largest area size possible of Palestinian lands through the Separation Wall plan in order to guarantee the expansion of Israeli settlements even after including them within their new illegal borders. (See table 14).

**Table 14: Land classification of the isolated area behind the Segregation Wall in 'Isla village**

No.	Land classification	Area (dunums)
1	Forests	241
2	Open spaces	523
3	Agricultural Areas	751
4	Israeli Settlements	131
5	Segregation Wall	75
6	Palestinian Built up Area	1
7	<b>Total</b>	<b>1,722</b>

Source: ARIJ-GIS, 2013

### The Israeli Checkpoints on 'Isla village

The Israeli military checkpoints are considered a uniform procedure for the Israeli army in the occupied Palestinian territories. Such measures did not exist prior to the outbreak of the Palestinian uprising Intifada in September 2000. During this period the Israeli army began to implement a number of checkpoints with only increased the already limited restrictions on movement when Palestinians attempt to cross the barriers. Moreover these checkpoints witness many examples of abuse and severe violations practiced by the Israeli soldiers against Palestinian civilians from all segments of society, students, teachers, patients, medical staff and employees are all submitted to lengthy security checks. These checks can involve beatings, humiliation, the stripping of clothes and forcing them to wait for long hours under the burning sun or in cold weather before allowing them to cross the checkpoints. These damaging practices have further affected Palestinian society, families fear for the safety of their loved ones and often avoid needing to cross any checkpoints or barriers out of self-protection, this can cause families to be separated from one another resulting in social fragmentation, economic inactivity especially with regards to trade, this in turn affects unemployment rates and internal migration. When attacks are made against medical teams and patients the damages to society are unprecedented.

The suffering of 'Isla village is not different from the suffering of other Palestinian villages in the governorate of Qalqiliya. After the completion of the Wall on the lands of 'Isla village, the Israeli occupation authorities established an agricultural gate, to the western side of the village and on the Wall route. The Israeli army controls the entrance of the Palestinian farmers from the village of 'Isla

to their agricultural lands to plant and cultivate them which have been isolated by the Wall. The access is limited to a specific number of Palestinian farmers, those who were able to obtain a permit from season to season (olive picking season) from the Israeli civil administration (ICA). Permits are usually issued for those who are able to prove their ownership of the land to the relevant Israeli department (such as the Israeli civil administration ICA), and the permits for the ownership of the land. Many land owners in this village suffered because of a punishment regime in which villagers are prevented from reaching their land. The most recent example of this was in 2013 when the agricultural gate was closed causing severe economic losses and a wasted harvest period. Leaving the land in this manner and not cultivating it is also very detrimental for the soil quality and can then have a negative impact on future yields.

### **Israeli military orders which targeted 'Isla village**

Israel have been systematically avoiding their responsibilities as an occupying power of the Palestinian territories through repeated attempts to justify their existence as an administrator body in the occupied Palestinian territories. Israeli use military orders to legitimize violations under the pretext of "security concerns", the orders themselves violate international and humanitarian laws and the repeated statements and decisions issued by the UN Security Council. Throughout the Israeli occupation, the village of 'Isla has been a target for many military orders which have affected land and properties. The following are Israeli military orders for which information is available:

- Israeli military order no.32/02/T: issued on 26th September 2002 to confiscate an area of 449 dunums of lands from the villages of Azzun, 'Isla, Habla, and Ras 'Atiya for the purpose of building the Segregation Wall.
- Israeli military order no.40/02/T: issued on 26th September 2002 to confiscate an area of 894.5 dunums of lands from the villages of 'Azzun, 'Isla ,Habla, and Kafr Thulth for the purpose of building the Segregation Wall.
- Israeli military order no.65/05/T: issued on 6<sup>th</sup> August 2005 to confiscate an area of 224 dunums of lands from the villages of 'Azzun, 'Isla and Kafr Thulth for the purpose of building the Segregation Wall.

### **Geopolitical status in 'Izbat at Tabib**

According to the Oslo II Interim Agreement signed by the Palestinian Liberation Organization (PLO) and Israel on 28<sup>th</sup> September 1995, 'Izbat at Tabib was divided into areas "B" and "C". Approximately 105 dunums (4.1% of the village's total area) were assigned as area B, where the Palestinian National Authority (PNA) retains complete control over civil matters but Israel retains responsibility for security. Area B constitutes most of the inhabited Palestinian areas, including the municipalities, villages and some refugee camps. The majority of the population of 'Izbat at Tabib resides in area B. While the remaining village area, constituting 2439 dunums (95.9% of the total), is classified as area C, where Israel retains full control over security and administration. In area C, Palestinian building and land management is prohibited without the prior consent or authorization of

the Israeli Civil Administration. Most of the land lying within area C is used for agricultural purposes and remains as open spaces, in addition to the confiscated lands which are used for the purpose of building Israeli settlements. (see table 15).

**Table 15: The geopolitical divisions of 'Izbat at Tabib according to the Oslo II Interim Agreement in 1995**

Area	Area in dunums	Percentage of total village area
Area A	0	0
Area B	105	4.1
Area C	2439	95.9
Nature reserve	0	0
<b>Total</b>	<b>2544</b>	<b>100</b>

Source: ARIJ-GIS, 2013

### **The Israeli Occupation practices in 'Izbat at Tabib village**

#### **The Israeli Segregation Wall plan in 'Izbat at Tabib village**

The Implementation of the Israeli Segregation Wall plan on the ground has been ongoing since June 2002. This began after the decision was taken by Israeli Authorities to implement the separation policy between Israel and the occupied Palestinian territories by establishing an isolation zone in the western part of the West Bank. This isolation zone stretches from the north to the south of the West Bank, thereby confiscating most agricultural fertilized lands, and isolating Palestinian societies (into Ghettos) and separating communities from one another. By controlling the natural resources and connecting most of the Israeli settlements in an attempt to legitimize the route of the Separation Wall inside the West Bank, the isolation area also undermines the regional interaction between Palestinian towns and villages. The construction of the wall has therefore ignored the ruling of the International Court of Justice (ICJ) made on July 9th 2004, which recommends that the route of the Wall should be changed and Palestinians affected by the Wall in this area should be offered compensation. However, on 30<sup>th</sup> April 2007, new amendments were made, which concentrated on the new route of the Separation Wall, in the areas which faced geographical obstacles in the West Bank, as these amendments were based on solving the problems which were considered a challenge in light of the continuous building process of the Separation Wall.

The first map that was issued by the Israeli army on June 2002, showed that the wall will cut the north-western part of the village and become part of the Israeli isolation zone, which Israel is trying to create through the construction of the wall in the occupied West Bank, from north to south. According to the route of the wall, the map issued in 2002 demarcates the areas of the village which will lose nearly 500 dunums of its land.

On March 2003, the Israeli military website published a new map illustrating the route of the Separation Wall in the occupied West Bank which indicated new amendments to be made to the Wall route. The new Amendments included the surrounding villages, such as Qalqiliya city and the villages of 'Arab Abu Farda, Habla, Ras 'Atiya and An Nabi Elyas. However, 'Izbat at Tabib village was not included within the issued amendments. Therefore, the north-western side of the village remains under threat of being confiscated because of the wall. It is important to note, that the Israeli occupation authorities started to construct the wall in this area in late 2003. The Israeli bulldozers have swept away the agricultural lands of the village that are located on the north-western side, in order to build the wall on these lands, which caused the isolation of some parts of the agricultural lands in the village. This land is used as the primary source of income for the villagers who depend on agriculture and farming in their daily lives. The main objective behind the Israeli modifications to

the wall route that were issued in 2003, was to connect Israeli settlements to each other without concern for what may result from these adjustments and the negative effects and disastrous outcomes it may have on the Palestinian communities and residents. According to the Israeli charts in 2003, it was to be built 2km away from the wall on the territory of the village of 'Izbat at Tabib. This resulted in the isolation of an area of approximately 500 dunums of village land (19.6 % of the total area of the village).

Subsequently, in 2005 and 2006 the Israeli army issued several amendments to the path of the wall in the occupied West Bank, however, none of these amendments included the village. This continued in spite of the protests by the people of the village and the neighboring villages and their objection to the difficult situation arising because of the wall. These amendments also came to serve the interests of Israeli settlements and ensured the inclusion of the new boundaries drawn by Israel through its construction of the wall.

In March 2007 ( the month before issuing another amendment to the wall in April 2007), the Israeli army issued the Israeli Military Order No. 07.09 / T, which provides an amendment to the section of the wall which exists in the villages of Jayyus, 'Izbat at Tabib, and An Nabi Elyas. The amendment aimed to move the wall toward the Israeli settlement Zufin where, according to this order, the Israeli military will reclaim the village lands and all its agricultural lands that have been isolated by the Wall, amounting to nearly 500 dunums. In February 2009, according to Israeli Military Order 07.09 / T, the Israeli bulldozers resumed working on the territory of the village and the neighboring villages and razed more lands of the village and the neighboring villages so as to alter the course of the wall. The map shows that all the land of the village is situated outside the Israeli isolation scheme.

### **The Israeli bypass roads on the Lands of 'Izbat at Tabib village**

The concept of “Bypass roads” began appearing during the time of the Oslo Agreement in September 1993 (which was signed between the PLO and Israel) to refer to the roads built by the Israelis in the occupied Palestinian territories. This was done in order to link Israeli settlements in the West Bank to one another as well as to the settlements inside Israel. Since then, Israel started to raise their efforts in increasing the size of bypass roads in the occupied Palestinian territories as part of its strategy to impose these policies on the ground, which will affect the Peace negotiations with Palestinians, and the establishment of a Palestinian state that is geographically connected and alive. During the last 46 years of occupation since the year 1967, Israel has been able to make and pitch 810 kilometers of bypass roads to facilitate the connection of the illegal Israeli settlements in the occupied West Bank. According to the Oslo Agreement that was signed between Palestine and Israel, the Palestinians were allowed to use these roads, but after the start of the second Intifada on 30 September 2000, the Israeli authorities prevented Palestinians from using these roads citing 'security concerns' as their primary reason. It is worth mentioning that the establishment of Israeli bypass roads in the occupied Palestinian territories has contributed to weakening the development of the Palestinian communities in the West Bank through the creation of obstacles in the areas that is reserved for Palestinian development. In 2004, Israel proposed a network of bypass roads that will alter the pathway of Palestinians and prevent them from using Israeli roads. Palestinians will be forced to use another road network that is entirely separated from the Israeli bypass roads to ensure the exclusive use of these roads by Israeli citizens. In doing so, Israel will be able to tighten its grip on and ensure control of Israeli bypass roads, while at the same time, depriving the Palestinians from their right to “freedom of movement” within the occupied Palestinian territory, as guaranteed by international humanitarian law. The Palestinian village of 'Izbat at Tabib is similar to other Palestinian villages in the occupied Palestinian territories which faced land confiscation because of the establishment of



Israeli bypass road No. 55 which cuts the village through the middle. Following the outbreak of the second Palestinian intifada in late September 2000, the Israeli occupation authorities increased their control over bypass road No. 55 and started to prevent Palestinians from 'Izbat at Tabib and neighboring Palestinian villages from using the bypass road so as to control the levels of violence. Claims were made that Palestinians throw stones at Israeli settlers who use this street as an entry and exit point to and from Israel.

### **Previous Israeli attacks on the territory and property**

On January 3rd, 2007, the Israeli authorities issued order number 531 and MAP No. ( 2/927 ) to construct a new street to reach Alfei Menashe settlement which passes through the urban area of the village. It also issued the village manor (in addition to the Israeli military order), a formal letter of " Israeli Civil Administration" in the settlement of Kedumim indicating that the existing homes in the village are illegal and that its residents are required to move to the neighboring village of 'Azzun. The Formal letter also refers to the rejection of the Israeli Civil Administration to issue a master plan for the village on the pretext that "the urban area of the village is illegal and had been erected illegally and are contrary to the laws and regulations of Israel." It is worth mentioning that the people of the village manor had submitted an application for a master plan for the village at the beginning of the nineties. This was done in an attempt to protect their homes from the threat of demolition that affected them in the mid-eighties, but it was rejected under the pretext of non-completion of the required paperwork and that "the proposed scheme is unprofessional." It should be noted, that today the villagers cannot renovate or expand their homes due to the Israeli practices against them and their houses are threatened by demolition.

On February 2nd 2008, the Israeli civil administration notified four Palestinian families in the village with orders to stop work and construction of homes and facilities in the village under the pretext of unauthorized building and homes in the area that are classified as Area "C", according to the Oslo II Interim 1995 Agreement. The notified buildings belong to Harba Sho'or and Mustafa Hassan Tabib, Mussa Adnan Tabib and Radi Yousef Tabib. The homeowners were notified of the demolition procedures and went on to complete the licensing procedures required, however, it was rejected by the Israeli occupation authorities and their homes remained under threat.

On March 14th 2008, the Israeli bulldozers of the Israeli Civil Administration demolished barracks of the agricultural area that is 100 square meters which belongs to Harba Tiaaha.

On May 2011, the Israeli occupation army handed the village council a notification that includes the extension of the validity of Israeli Military Order No. (10/05/T) , which would confiscate about 1 acres of land in the village, in order to build a fence the 400 m long to surround the village from the north side. This fence is adjacent to the bypass road number 55 . The occupation authorities confiscated claims that the reason behind land confiscation in the village, is to protect the Israeli bypass road number 55 from the Palestinians since Israel claim that they throw stones at settlers' cars who uses this street to enter to Israel and return back to Israeli settlements inside the West Bank . Also on the same day that the village received confiscation orders, the Israeli civil administration also handed over a notification letter to the citizen Zidane Yasser Al Tabib, in order to stop the construction of his house under the pretext of an unauthorized building in the area that is classified as area " C" which is under full Israeli control, for security and administrative issues, and this is according to the agreement Oslo II Interim ,1995.

On May 2<sup>nd</sup> 2012, Israeli bulldozers, supported by the Israeli army, proceeded to destroy a house ( owned by Zidane Yasser Mohammed Tabib) that was still under construction, under the pretext of an unauthorized building in the area that is classified as area "C", where according to Oslo II Agreement of 1995, Israel retains full control over security and administration in this area. The demolition was conducted after less than six months from the time of being notified which informed them to stop the construction of the house. Despite proceeding with the correct licensing procedures required by the Israeli civil administration, the owner's house was demolished because of the procrastination of the Israeli authorities and intransigence to issue the necessary licensing for the house. This intransigence, deliberately intended by the Israeli authorities, transpired in order to complicate the licensing process, which resulted in the complete demolition of the house.

On August, 7<sup>th</sup> ,2012, the Israeli Civil Administration, notified the village council and handed over a military order under the heading " give an additional opportunity to challenge the demolition order "which has the number ( 308 610 ) , and issued in 2005 , by virtue of this order the Board Services building of the village will be demolished under the pretext of unlicensed construction since this Council services building is located in the area classified as " c" . The Board Services building was set up in 2004 with an area of 280 m<sup>2</sup> , which is a two-floors village school where nearly 60 students are being taught there, and also includes a health clinic affiliated to the Ministry of Health . It should be noted that the Israeli civil administration has already notified the Board Services to stop the construction work twice in the years 2006 and 2007, but the village council of the village was able to adopt a resolution of precaution, from the Israeli Supreme Court to stop the demolition of the village council services . In spite of the court's decision , but that the Israeli Civil Administration insists on moving ahead with the demolition of the Council services.

### **Israeli military checkpoints**

After the construction of the segregation wall on the village territory and before the announcement of the Israeli military order which includes an amendment to the route of the wall which was given for the benefit of the neighboring village 'Jayyus,'Izbat at Tabib and An Nabi Elyas. The Israeli army imposed stricter control on the people of the village in an attempt to displace the citizens of the village and make things more difficult for them. In some instances, the Israeli authorities rejected the issuing of permits of entry into the isolated lands which are located to the west of the wall. Only a small number of people from this village, only those who are able to prove their ownership of the land to the Israeli administration (ICA), may enter. Usually they issue permits only for land owners (generally the elderly). The Israeli Civil Administration issue permits only from one season to another, making it difficult for land owners to cultivate their agricultural lands by themselves without the necessary equipment or laborers, especially since these permits do not include or allow access for their laborers and equipment that are needed for the cultivation of the land.

## **Development plans and projects**

### **Implemented projects**

‘Azzun Municipal Council has implemented several development projects in ‘Azzun during the past five years (see table 16).

**Table 16: Implemented development plans and projects in ‘Azzun during the last five years**

Name of the project	Type	Year	Donor
Constructing the first floor of the Martyr Yasir Arafat School	Educational	2011	USAID
Constructing a water reservoir and establishing the water network	Infrastructure	2010	Water Authority
Rehabilitating the northern well	Water	2010	Water Authority
Paving and rehabilitating ‘Azzun road	Infrastructure	2009	Ministry of Finance
Supplying street lighting to ‘Azzun/ Kafr Thulth road	Infrastructure	2010	Abu Dhabi Development Fund
Rehabilitating and developing ‘Azzun public park	Public Services	2011	‘Azzun Municipal Council
Increasing the electricity power of the northern well	Infrastructure	2011	‘Azzun Municipal Council
Constructing commercial storehouses	Public Services	2011	Municipal Development & Credit Fund
Paving and improving the town entrance	Infrastructure	2011	KFW
Constructing a water reservoir	Water	2009	USAID & ANERA
Renovating the water network	Infrastructure	2009	USAID & ANERA
Rehabilitating agricultural roads	Infrastructure	2007	Agricultural Relief
Constructing and finishing the services complex	Public Services	2008	Ministry of Finance
Connecting ‘Azzun town to the electricity network	Infrastructure	2008	Ministry of Finance
Purchasing land for a school	Educational	2011	Ministry of Finance
Constructing and furnishing a hall and a kindergarten	Educational	2012	Ministry of Finance

Source: ‘Azzun Municipal Council, 2012

## Proposed projects

‘Azzun Municipal Council, in cooperation with the town’s civil society organizations and the town residents, hopes to implement several projects in the coming years. The project ideas were developed during the Participatory Rapid Appraisal (PRA) workshop conducted by ARIJ staff in the town. The projects are as follows, in order of priority from the viewpoints of the participants in the workshop:

1. Restoring and rehabilitating the inside and outside of the building of “Al Berr wal Islah Charitable Society” and providing it with an umbrella.
2. Creating projects, activities and programs to assist in the development and advancement of the women’s movement such as marketing, food processing and other projects.
3. Developing the park and providing recreational and entertainment games for children.
4. Constructing agricultural roads (approximately 13km long), reclaiming 350 dunums of agricultural lands, and constructing 50 agricultural wells; all as an integrated project aiming to use and preserve of these lands.
5. Constructing and paving internal roads (approximately 5km long).

6. Establishing a retaining wall along the valley passing through the town territory (approximately 5km long).
7. Rehabilitating the southern artesian well so that it can be used to its full potential.
8. Establishing a sewerage network (approximately 9km long) and a treatment unit.
9. Building a public services center.
10. Developing the existing civil defense center.
11. Expanding the 'Azzun health clinic.
12. Restoring and completing 'Azzun Secondary School's yards.
13. Establishing a new school for girls.
14. Providing a bus for students.
15. Constructing a building for 'Izbat at Tabib Co-educational Elementary School.
16. Establishing a gym to include a number of playgrounds (land is available for this purpose).
17. Rehabilitating 170 dunums of greenhouses, and connecting irrigation networks (approximately 100 dunums).
18. Completing the public water network and changing the plastic pipes for metal ones (approximately 2km long).
19. Extending the agricultural irrigation networks and providing farmers with plastic tanks of 5m<sup>3</sup> capacity.
20. Installing solar panels in remote areas.
21. Constructing a compost factory for the production of organic fertilizers.
22. Creating small development projects such as the establishment of home gardens, and collective sheep or poultry farms, to employ labor.
23. Establishing a dairy factory along with a cattle farm.
24. Expanding the town's structural plan.

## Locality development priorities and needs

‘Azzun suffers from a significant shortage of infrastructure and services. Table 17 shows the development priorities and needs in the town, according to the Municipal Council’s perspective:

**Table 17: Development priorities and needs in ‘Azzun**

No.	Sector	Strongly needed	Needed	Not a priority	Notes
<b>Infrastructural needs</b>					
1	Construction and paving of roads	*			35.8km <sup>^</sup>
2	Rehabilitation of old water networks	*			4km
3	Extending the water network to cover new built up areas	*			4.4km
4	Construction of new water networks	*			1.4km
5	Rehabilitation/construction of new wells or springs	*			Aal Adwan southern well
6	Construction of water reservoirs	*			250m <sup>3</sup>
7	Construction of a sewage disposal network	*			32km
8	Construction of a new electricity network	*			10km
9	Providing containers for solid waste collection	*			100 containers
10	Providing vehicles for collecting solid waste			*	
11	Providing a sanitary landfill			*	
<b>Health needs</b>					
1	Building new clinics or health care centres	*			1 health center
2	Rehabilitation of old clinics or health care centres	*			1 health center
3	Purchasing medical equipment and tools	*			
<b>Educational needs</b>					
1	Building new schools	*			2 elementary schools for boys, 1 school for girls and 1 co-educational elementary school
2	Rehabilitation of old schools	*			The boys’ secondary and the girls elementary schools
3	Purchasing new school equipment	*			Computer and science labs
<b>Agriculture needs</b>					
1	Rehabilitation of agricultural lands	*			375 dunums
2	Building rainwater harvesting cisterns	*			70 cisterns
3	Construction of livestock barracks	*			25 barracks
4	Provision of Veterinary Services	*			
5	Provision of seeds and hay for animals	*			450 tons per year
6	Construction of new greenhouses	*			100 dunums and 10 greenhouses
7	Rehabilitation of greenhouses	*			50 dunums and 4 greenhouses
8	Provision of field crops seeds	*			
9	Provision of plants and agricultural supplies	*			

<sup>^</sup> 18.3km main roads, 9.5km secondary roads and 8km agricultural roads

Source: ‘Azzun Municipal Council, 2012



## References:

- *Applied Research Institute - Jerusalem (ARIJ), 2013. Geographic Information Systems and Remote Sensing Unit Database. Bethlehem - Palestine.*
- *Applied Research Institute - Jerusalem (ARIJ), 2013. Geographic Information Systems and Remote Sensing Unit; Land Use Analysis (2012) – Half Meter High Accuracy. Bethlehem - Palestine.*
- *Applied Research Institute - Jerusalem (ARIJ), 2013. Water & Environment Research Unit Database (WERU). Bethlehem - Palestine.*
- *'Azzun Municipal Council, 2012.*
- *Ministry of Education & Higher Education (MOHE) - Qalqiliya, 2012. Directorate of Education; A database of schools (2011/2012). Qalqiliya – Palestine.*
- *Palestinian Central Bureau of Statistics. 2009. Ramallah, Palestine: General Census of Population and Housing Censuses, 2007.*
- *Palestinian Ministry of Agriculture (MOA), 2010. Directorate of Agriculture data (2009/2010). Qalqiliya – Palestine.*