

# Kureise Village Profile



**Prepared by**



**The Applied Research Institute - Jerusalem  
ARIJ**

**Funded by**



**Spanish Cooperation**



**Azahar program**

**2009**

## Acknowledgments

*ARIJ hereby expresses its deep gratitude to the Spanish Agency for International Cooperation for Development (AECID) for their funding of this project through the Azahar Program.*

*ARIJ is grateful to the Palestinian officials in the ministries, municipalities, joint services councils, village committees and councils, and the Palestinian Central Bureau of Statistics (PCBS) for their assistance and cooperation with the project team members during the data collection process.*

*ARIJ also thanks all the staff who worked throughout the past couple of years towards the accomplishment of this work.*

## *Background*

This booklet is part of a series of booklets, which contain compiled information about each city, town, and village in Hebron Governorate. These booklets come as a result of a comprehensive study of all localities in Hebron Governorate, which aims at depicting the overall living conditions in the governorate and presenting developmental plans to assist in developing the livelihood of the population in the area. It was accomplished through the 'Village Profiles and Azahar Needs Assessment'; a project funded by the Spanish Agency for International Cooperation for Development (AECID) and the Azahar Program.

The 'Village Profiles and Azahar Needs Assessment' was designed to study, investigate, analyze and document the socio-economic conditions and the needed programs and activities to mitigate the impact of the current unsecure political, economic and social conditions in Hebron Governorate with particular focus on the Azahar program objectives and activities concerning water, environment, and agriculture.

The project's objectives are to survey, analyze and document the available natural, human, socioeconomic and environmental resources, and the existing limitations and needs assessment for the development of the rural and marginalized areas in Hebron Governorate. In addition, the project aims at preparing strategic developmental programs and activities to mitigate the impact of the current political, social, and economic instability with the focus on the agricultural sector.

All locality profiles in Arabic and English are available online at <http://proxy.arij.org/vprofile/>

## *Table of Contents*

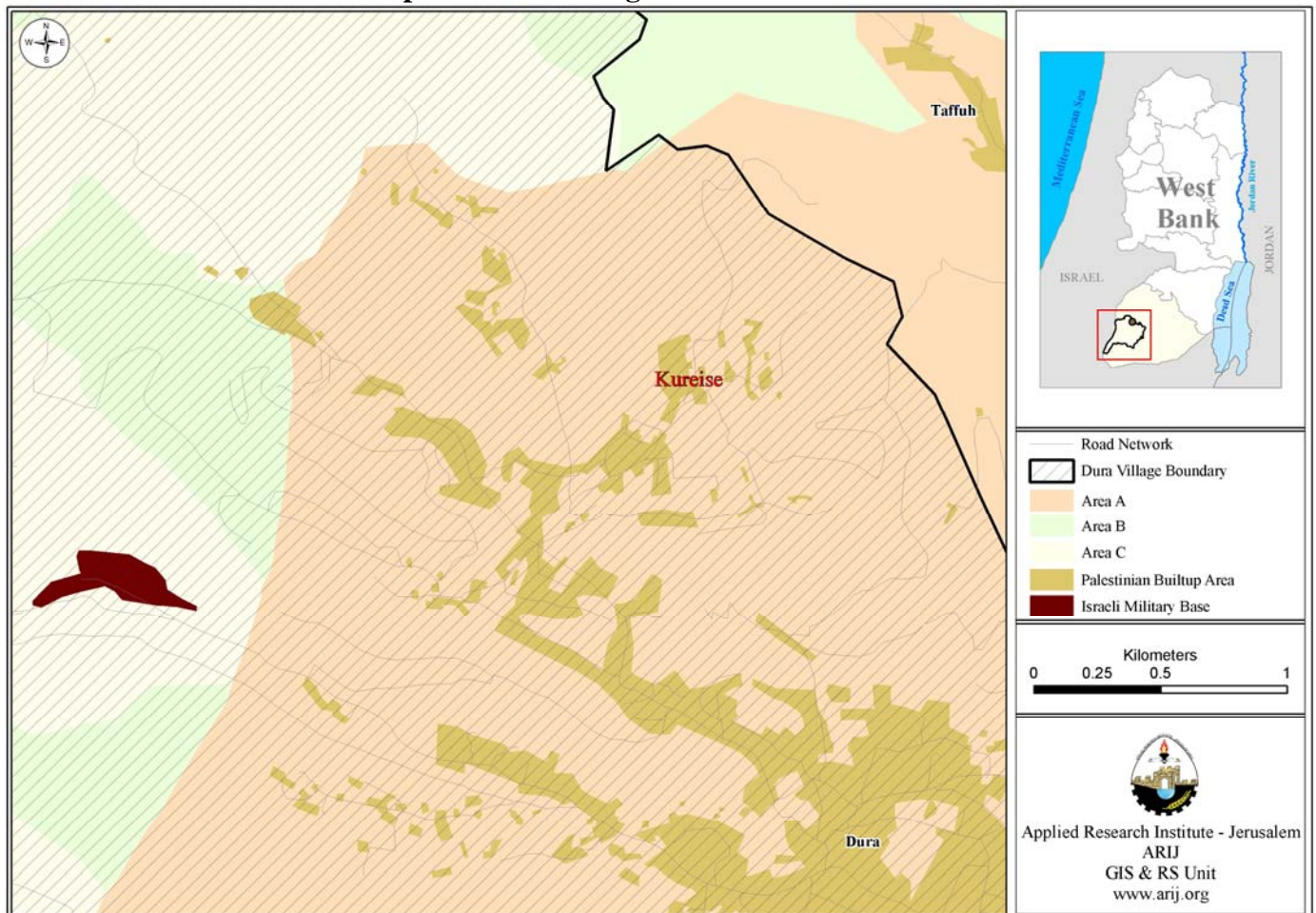
<i>Location and Physical Characteristics</i>	<u>4</u>
<i>History</i>	<u>5</u>
<i>Religious and Archeological Sites</i>	<u>5</u>
<i>Population</i>	<u>6</u>
<i>Education</i>	<u>6</u>
<i>Health Status</i>	<u>8</u>
<i>Economic Activities</i>	<u>8</u>
<i>Agricultural Sector</i>	<u>10</u>
<i>Institutions and Services</i>	<u>12</u>
<i>Infrastructure and Natural Resources</i>	<u>12</u>
<i>Development Plans and Projects</i>	<u>13</u>
<i>Locality Development Priorities and Needs</i>	<u>13</u>
<i>References</i>	<u>14</u>

## *Kureise Village Profile*

### Location and Physical Characteristics

Kureise (كريسه) is a village in Dura area located 12 km west of Hebron city, in the southern part of the West Bank. It is bordered by Rafada village to the east, Taffuh village to the north, Suba and Humsa villages to the west, and Dura city to the south.

**Map 1: Kureise village location and borders**



Kureise village is located on mountains area at the moderate elevation of 793m above sea level. The mean annual rainfall in Kureise village is 436 mm; the average annual temperature is 15.7 °C, and the average annual humidity is 60.6% (ARIJ GIS).

Kureise village has been incorporated in Dura Municipality since 2004, but it has its own Project Committee since 1950. Today this comprises of 3 members but with no fulltime employees. The Project Committee operations and responsibilities include:



1. Administration, planning and development;
2. Social development services;
3. Infrastructure maintenance water, electricity, solid waste collection, and the distribution of social services.

## **History**

The history of Kureise village dates back to Turkish period. Its residents are from families that have been living in the area for a long time.

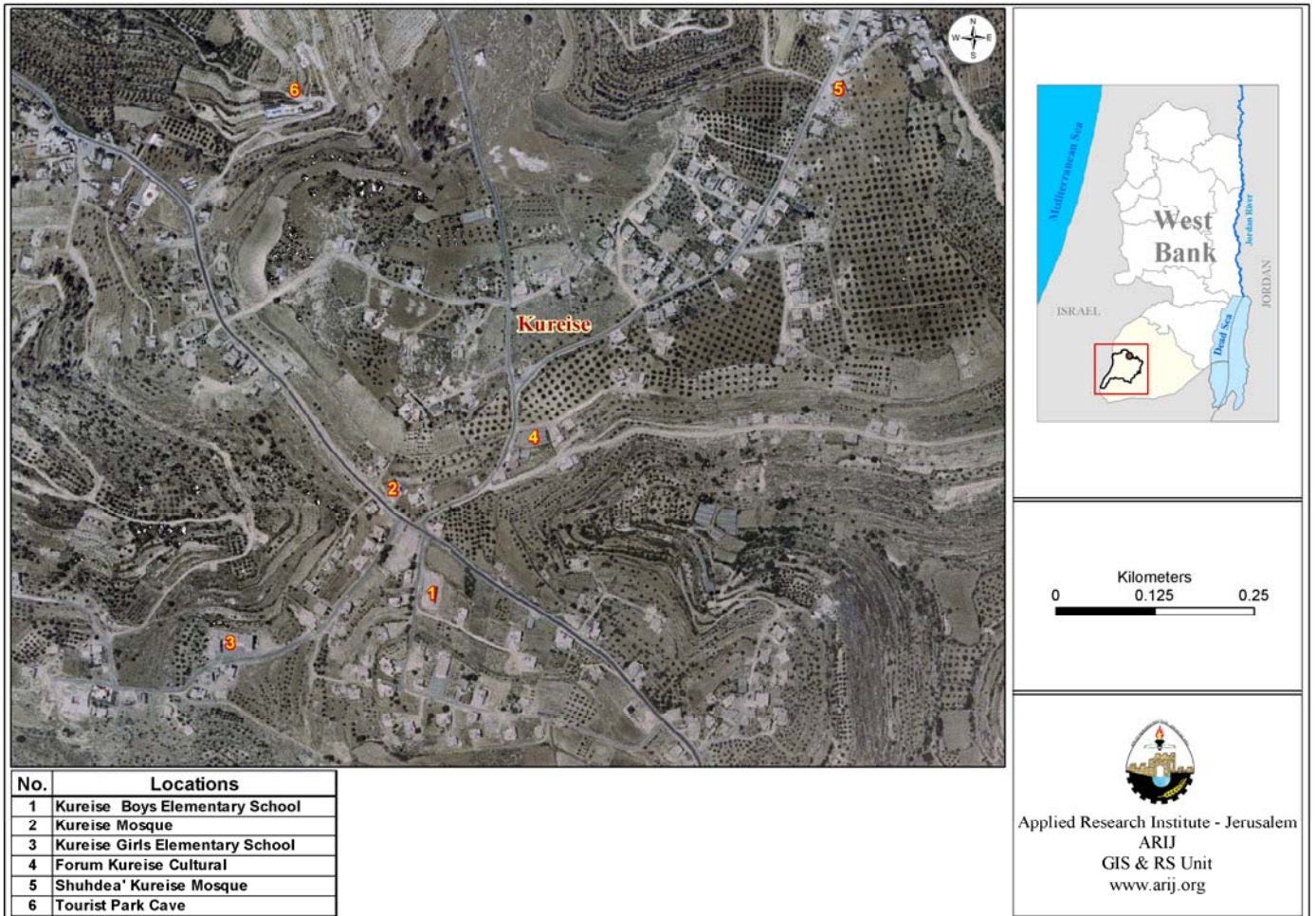
### **Photos of Kureise**



## **Religious and Archeological Sites**

There are three Mosques in Kureise village: Kureise Mosque, Shuhdea' Kureise Mosque and Ras Wadi Al Hmam Mosque. In terms of archeological sites the village has none.

Map 2: Main locations in Kureise village



## Population

The total population of Kureise, in 2007, is estimated to be 2,435. this is an estimate number based on the Palestinian Central Bureau of Statistics (PCBS) Census of 1997, of which 1,201 were males and 1,234 were females.

## Families

The population of Kureise is comprised of three main families: Ar-Rjoob, 'Ameryah, Sharha and other smaller families.

## Education

Kureise village was not counted as a single locality during the 2007 PCBS Census. Based upon the PCBS divisions, Kureise village was counted as part of Dura village. Therefore, the labor

force data for Kureise village is not available. Table 1 shows the education status in Dura, Rafada, Al Hijra, Kureise and At Tabaqa.

Sex	Illiterate	Can read & write	Elementary	Preparatory	Secondary	Associate Diploma	Bachelor	Higher Diploma	Master	PhD	Total
M	295	1,072	2,196	2,975	1,627	510	981	19	126	51	9,852
F	784	1,125	1,928	2,770	1,621	457	933	12	30	2	9,662
<b>T</b>	<b>1,079</b>	<b>2,197</b>	<b>4,124</b>	<b>5,745</b>	<b>3,248</b>	<b>967</b>	<b>1,914</b>	<b>31</b>	<b>156</b>	<b>53</b>	<b>19,514</b>

Source: PCBS, 2009. Population, Housing and Establishment Census-2007, Final Results

*This data includes population figures from the villages of Dura, Rafada, Al Hijra, Kureise and At Tabaqa*

According to the field survey there are three schools in Kureise village; two schools for boys and one school for girls. The three schools are supervised by government sector.

School Name	Kind by Sex	Supervising Authority
1. Kureise Boys Elementary School	Male	Governmental
2. New Kureise Boys Elementary School	Male	Governmental
3. Kureise Girls Elementary School	Female	Governmental

According to Ministry of Higher Education (MOHE) data, by the end of the 2006/2007 scholastic year there were 785 students (384 males and 401 females), 38 teachers, and 29 classes.

		Government	Private	Total
<b>Male</b>	No. of Schools	2	-	<b>2</b>
	No. of class	15	-	15
	No. of Teachers	20	-	<b>20</b>
	No. of Students	384	-	<b>384</b>
<b>Female</b>	No. of Schools	1	-	<b>1</b>
	No. of class	14	-	<b>14</b>
	No. of Teachers	18	-	<b>18</b>
	No. of Students	401	-	<b>401</b>

Source: ARIJ Data Base – 2006

In the 2006/2007 scholastic year, there were three kindergartens in Kureise village. These kindergartens provided pre-school education services to 185 children. Table 4 shows the number of kindergartens by name, number of children and supervising authority.

No.	Kindergarten Name	Number of Classes	Number of Children	Number of Teachers	Supervising Authority
1.	Bent Area development Society	4	133	5	Charitable Society
2.	Besain Kindergarten	1	26	1	Private
3.	Kureise Kindergarten	2	26	3	Private

Source: ARIJ database, 2006



Kureise lacks secondary stages in its schools, therefore most students have to travel to Dura city Secondary Schools to complete their school education, which is about 3 km faraway. The educational sector in the village is suffering from the following problems:

- Far distance of Dura schools for the secondary students.
- Lack of transportation, and
- Restriction of Israeli checkpoints on the roads.

## **Health Status**

Kureise village severely lacks health institutions; there is just one maternity & pediatric center which provides health care for mothers and children. In general there are no health services or private physician clinics, pharmacy, ambulance or medical laboratory. In emergency cases, residents of Kureise have to travel for their health services, mainly to Dura city, around 3 km away.

Health sector in Kureise suffers from the lack of a full time physician in health clinic in the village, lack of a complete health center to provide main service in the village and the distance the village is from other services.

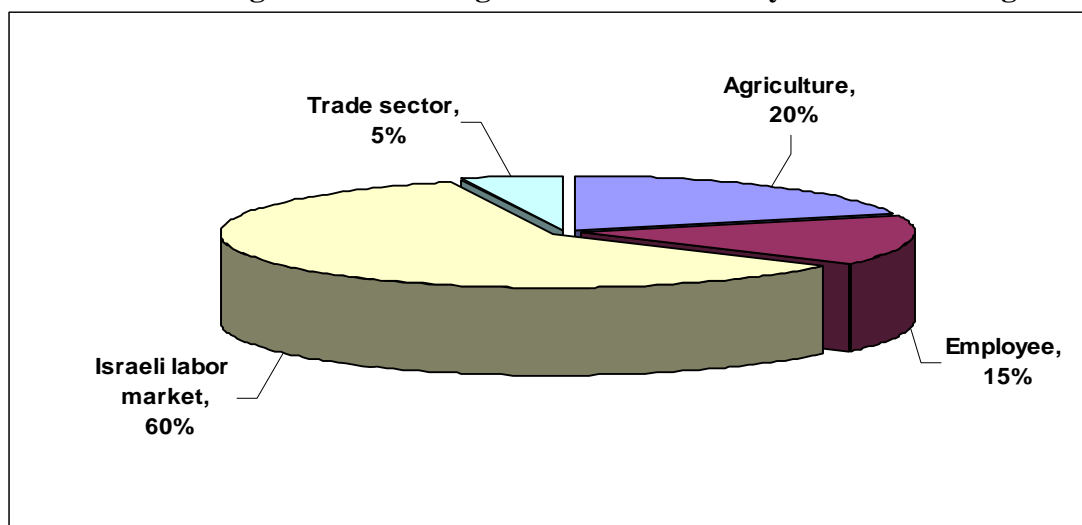
## **Economic Activities**

Since the Israel occupation of the West Bank in 1967, residents of Kureise depended mainly on the Israeli labor market. As of the mid of 2007 more than 60% of the Kureise labor force were dependent on the Israel labor market. In addition to the Israeli labor market the economy of Kureise depends highly on the agricultural sector. This accounts for 20% of the total labor force. The remaining proportion of residents depends on the public sector and trade sector.

The survey also indicated that the share of the population working in the various sectors of the economy is listed below by percentage:

- The agriculture sector 20 %,
- Israeli labor market 60%.
- Employee in Governmental or Private institutions 15 %
- The trade sector 5 %,

**Figure 1: Percentage of economic activity in Kureise village**



Kureise has two major institutions, one is Al ‘Anwar fuel station and another is a Tourist park cave. The village also has 8 groceries that provide trading services for the residents.

Based on the ARIJ survey conducted in November 2007 in Hebron Governorate localities, the unemployment rate in Kureise village stood at 30%. The survey data also indicated that the social groups most affected in the village by Israeli restrictions during the second Intifada were:

- 1) Workers previously employed in the Israeli market,
- 2) Small-scale farmers,
- 3) Small-scale Traders.

**Labor Force**

Kureise village was not counted as a single locality during the 2007 PCBS Census. Based upon the PCBS divisions, Kureise village was counted as part of Dura village. Therefore, the labor force data for Kureise village is not available. Table 5 shows the labor force status in Dura, Rafada, Al Hijra, Kureise and At Tabaqa.

Sex	Economically Active				Not Economically Active						Total
	Employed	Currently Unemployed	Unemployed (Never Worked)	Total	Students	House keeping	Unable to work	Not working & Not looking For Work	Other	Total	
M	4,393	327	361	5,081	3,906	12	573	103	177	4,771	<b>9,852</b>
F	1,048	45	181	1,274	3,943	3,863	485	24	73	8,388	<b>9,662</b>
<b>T</b>	<b>5,441</b>	<b>372</b>	<b>542</b>	<b>6,355</b>	<b>7,849</b>	<b>3,875</b>	<b>1,058</b>	<b>127</b>	<b>250</b>	<b>13,159</b>	<b>19,514</b>

Source: PCBS, March 2009. Population, Housing and Establishment Census-2007, Final Results  
 This data includes population figures from the villages of Dura, Rafada, Al Hijra, Kureise and At Tabaqa

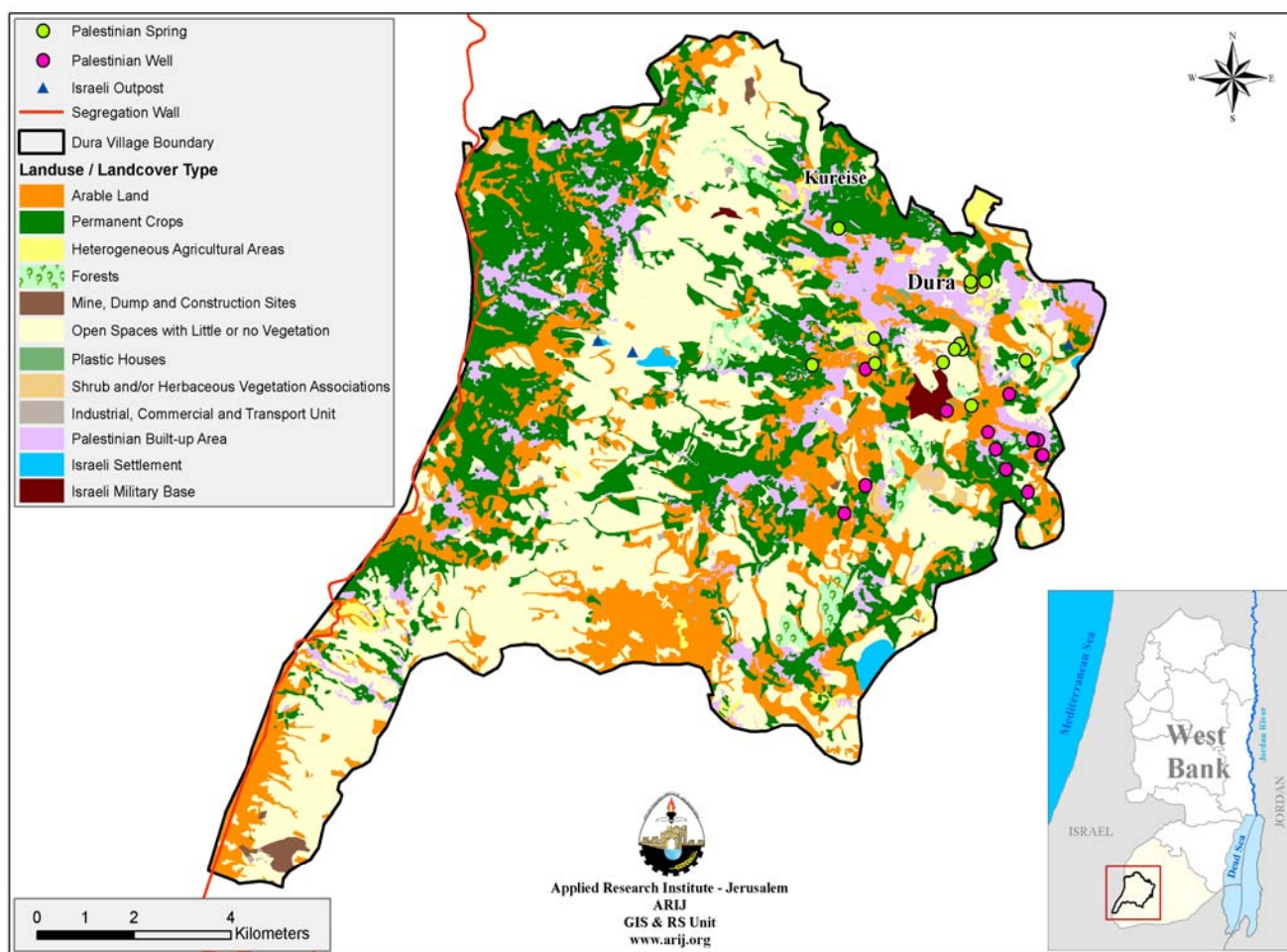
### Agricultural Sector

Kureise village lies on a total area of 7,000 dunums. 4,050 dunums are considered arable land; however, only 2,878 dunums are cultivated.

Total Area	Arable Land		Built up Area	Forests Area	Open Spaces and Rangelands
	Cultivated Area	Uncultivated Area			
7,000	2,878.5	1,171.5	530	955	520

Source: Palestinian Ministry of Agricultural (MOA), 2006

**Map 3: Land use/ Land cover and Segregation wall route in Kureise village.**



There are about 11.5 dunums of plastic houses in Kureise village. About 11 dunums of this area are used for growing cucumber.

Table 7 shows the different types of rain-fed and irrigated open cultivated vegetables in the village of Kureise. The rain-fed fruity vegetables are the most cultivated with an area of about

104 dunums. The most common vegetables cultivated within this area are zucchini, tomato and snake cucumber (Faqous).

Fruity vegetables		Leafy vegetable		Green legumes		Bulbs		Other vegetables		Total area	
Rf	Irr.	Rf	Irr.	Rf	Irr.	Rf	Irr.	Rf	Irr.	Rf	Irr.
104	21.5	0	39.5	5	3	0	40	22	29	131	133

Rf: Rain-fed, Irr: Irrigated

There are 4 types of aromatic medical plants in the village of Kureise which spread over a total area of about 12 dunums. These plants are thyme, mint, chamomile, and sage.

Total aromatic medicinal plants		
Rain-fed	Irrigated	Total
10	2	12

In the village of Kureise, there is a total area of 1,593 dunums planted with olive trees. Other trees planted in the area are mostly stone-fruits trees such as apricot, cherry, peach, and plum trees. In addition, the village of Kureise is planted widely with almond trees and grape vines.

Olives		Citrus		Stone-fruits		Pome fruits		Nuts		Other fruit		Total area	
Rf	Irr	Rf	Irr	Rf	Irr	Rf	Irr	Rf	Irr	Rf	Irr	Rf	Irr
1,593	0	0	2	109	1	21	0	92	0	411	0	2,226	3

Rf: Rain-fed, Irr: Irrigated

Table 10 shows the total field crops cultivated in the village of Kureise. Cereals, in particular wheat and barley, are the most cultivated crops with an area of about 210 dunums. In addition, the cultivation of forage crops, in particular, common and bitter vetch is common in the village of Kureise.

Cereals		Bulbs		Dry legumes		Oil crops		Seeds		Forage crops		Stimulating crops		Other crops		Total area	
Rf	Irr.	Rf	Irr	Rf	Irr	Rf	Irr.	Rf	Irr.	Rf	Irr.	Rf	Irr.	Rf	Irr	Rf	Irr
210	0	1	0	18	0	0	0	1	0	130	0	2	0	0	0	362	0

Rf: Rain-fed, Irr: Irrigated

The data also indicates that the residents of Kureise village are dependent upon rearing and keeping livestock, such as sheep, goats and chicken, in addition to about 1,066 bee hives.

Cows*	Sheep	Goats	Camels	Horses	Donkeys	Mules	Broilers	Layers	Bee Hives
13	300	290	5	2	20	2	84,600	36,300	1,066

\*Including cows, bull calves, heifer calves and bulls

Kureise is an Agricultural village and as mentioned above it has 7,000 dunums, most of which is arable land (4,050). 20% of the residents are engaged in agriculture activities. Kureise has many Olive Tree plantations, vineyards and stone-fruits tree.



Rainfall is the main source of water for irrigation in the village, but the field survey data indicated that the farmers also depend on cisterns to irrigate their crops.

There is about 20 km of agricultural roads in Kureise suitable, but it is not suitable for general use and does not cover the vast agricultural area of the village.

## Institutions and Services

Kureise is a small rural village; the residents get their most services from Dura city. However, there is a Project Committee that was established in 2004, consisting of three members. There is only one institution in the village; Kureise cultural forum.

## Infrastructure and Natural Resources

- **Telecommunication Services:** Kureise village is connected to a telecommunication network. Approximately 80% of the households have a telephone connection.
- **Water Services:** Kureise has been connected to the water network since 2006; about 30% of the households are still connected. Dura municipality is the main provider for water resources. The cisterns and water tanks are the alternative resources to water networks in the case of shortages in water.
- **Electricity Services:** Kureise has been connected to electricity network since 1980. Approximately 100% of households in the village are connected to the electricity network. Kureise Project Committee manages the distribution of electricity which is supplied by South Electricity Company.
- **Solid Waste Collection Services:** In Kureise village, there is a solid waste management system operated by the Project Committee. The solid waste management is collected by a special vehicle in cooperation with neighbouring villages (Joint Services Council) and transported from the residential areas to special dumping site (Al Deirat), where there they burn or bury it.
- **Sewage Disposal Facilities:** There is no sewage network in the village. All housing units in Kureise rely on cesspits.
- **Transportation Services:** Kureise village is in need of official transportation services, the residents mostly use their private cars or access near villages to travel outside the area. The main obstacles facing transportation of passengers in the village include:
  1. Deterioration of roads.
  2. Shortage of vehicles and transportation services

In terms of road qualities, 3 km of main roads are paved and in a good condition, 2 km of internal roads are paved and in a good condition, 3 km of internal roads are unpaved. There are about 20 km of agricultural roads that are unpaved and only suitable for agricultural use.

## Development Plans and Projects

Since 2004, the Project Committee of Kureise had not implemented any project in the village, due to the shortage of funds and absence of grants from donor institutions.

## Locality Development Priorities and Needs

According to Kureise Project Committee the village has suffered from a shortage of many infrastructural and services needs. Table 12 shows the development priorities in the village.

<b>Table 12: Development Priorities and Needs in Kureise</b>						
No.	Sector	Strongly Needed	Needed	Moderately Needed	Not Needed	Notes
<b>Infrastructural Needs</b>						
1	Opening and Pavement of Roads	*				12 km agricultural roads
2	Construction of New Water Networks				*	
3	Rehabilitation of Old Water Networks				*	
4	Construction of Water Reservoirs				*	
5	Extending the Water Network to cover New Built up Areas	*				3 km
6	Construction of Sewage Disposal Network	*				
<b>Health Needs</b>						
1	Building of New Clinics or Health Care Centre	*				
2	Rehabilitation of Old Clinics or Health Care Centres				*	
3	Purchasing of Medical Equipments and Tools				*	
<b>Educational Needs</b>						
1	Building of New Schools	*				Secondary
2	Rehabilitation of Old Schools	*				Elementary
3	Purchasing of New Equipments for Schools	*				
<b>Agriculture Needs</b>						
1	Rehabilitation of Agricultural lands	*				2000 dunums
2	Building Cisterns	*				20 cisterns
3	Construction of Barracks for Livestock	*				20
4	Veterinary Services	*				
5	Seeds and Hay for Animals	*				
6	Rehabilitation of Greenhouses		*			4
7	Field Crops Seeds				*	
8	Plants and Agricultural Supplies		*			

**References:**

- Applied Research Institute – Jerusalem (ARIJ). *GIS Database*. 2006-2009.
- Ministry of Agriculture. *Agricultural Status Database in Hebron Governorate*. 2006.
- Ministry of Higher Education. *Educational Status Database*. 2006-2007.
- Palestinian Central Bureau of Statistics. *Population, Housing and Establishment Census- Final Results*. Ramallah, Palestine. 1997 -2007.