

Khirbet Ad Deir Village Profile



Prepared by



The Applied Research Institute - Jerusalem

Funded by



Spanish Cooperation



Azahar program

March 2007

Table of Contents

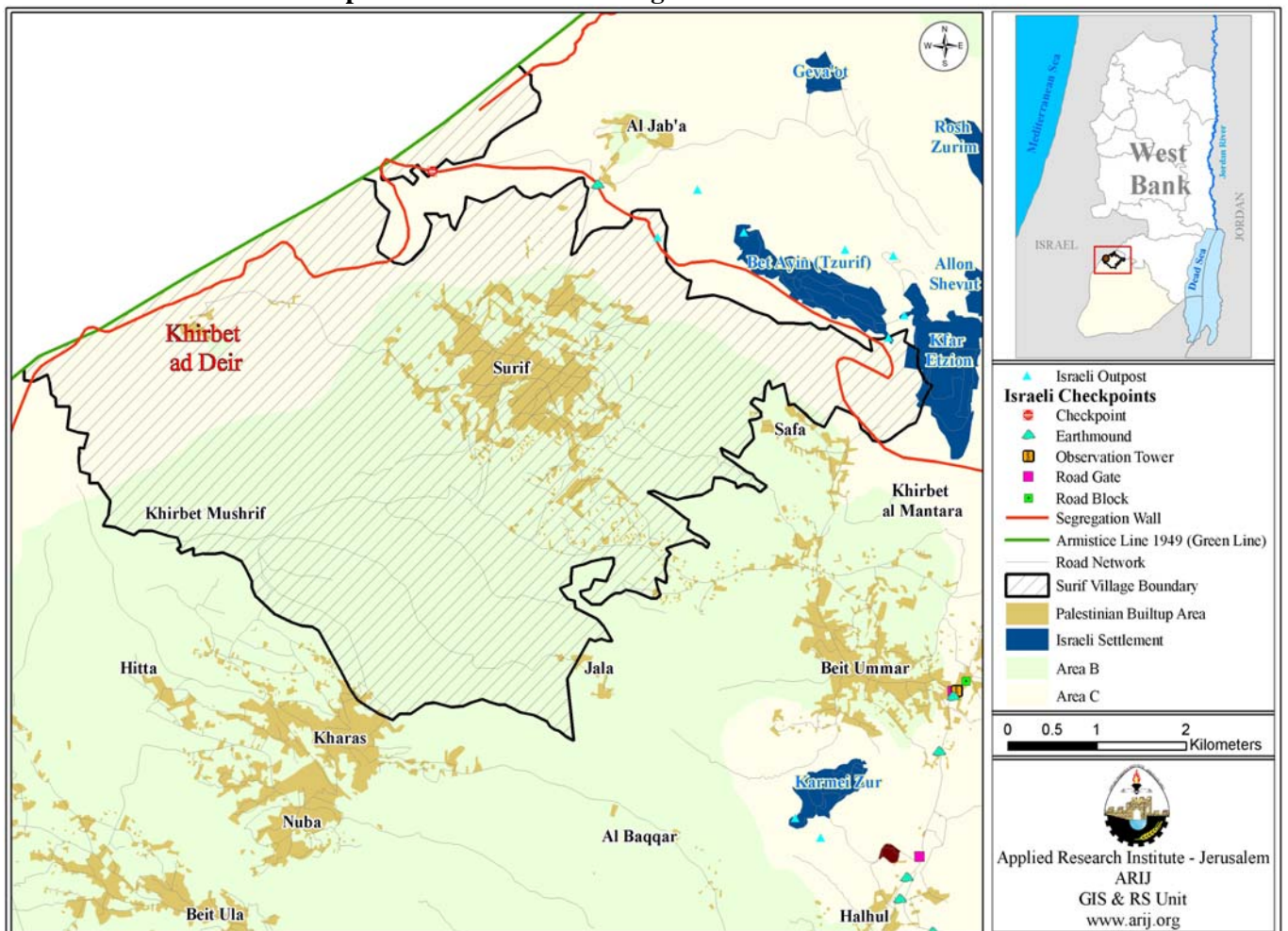
<i>Location and Physical Characteristics</i>	<u>2</u>
<i>History</i>	<u>3</u>
<i>Demography and Population</i>	<u>3</u>
<i>Economy</i>	<u>5</u>
<i>Education</i>	<u>6</u>
<i>Health Status</i>	<u>7</u>
<i>Religious and Archeological Sites</i>	<u>7</u>
<i>Institutions and Services</i>	<u>7</u>
<i>Infrastructure and Natural Resources</i>	<u>8</u>
<i>Agricultural Sector</i>	<u>8</u>
<i>Impact of the Israeli Occupation</i>	<u>9</u>
<i>Development Plans and Projects</i>	<u>10</u>
<i>Locality Development Priorities and Needs</i>	<u>10</u>

Khirbet Ad Deir Village Profile

Location and Physical characteristics

Khirbet Ad Deir is a Palestinian village located 15 km north of Hebron City, in the northern section of the Hebron Governorate. The village is bordered by Surif to the east, the Green Line to the north and west, and by Kharas from the south.

Map 1: Khirbet Ad Deir village location and borders



The total area of Khirbet Ad Deir village is 3,670 dunums, of which 150 dunums are classified as Palestinian 'built up' areas, 3,000 dunums are designated agricultural land, 20 dunums include both open space and forest area, and the Israeli forces have confiscated 500 dunums. The village has a master plan for 58 dunums of its land.

Khirbet Ad Deir village is situated at an elevation of 463 m above sea level, with a mean rainfall 660 mm, an average annual temperature of 16 °C, and average annual humidity of 61 % (ARIJ GIS).

From 1996 until 2000, a Project Committee governed Khirbet Ad Deir village; in 2000, the Ministry of Local Authority appointed a Village Council to replace the Project Committee, which currently consists of three members and one part time employee. Main responsibilities of the Village Council include:

1. Administration and development planning;
2. Social welfare; and
3. Infrastructure maintenance, water, electricity, roads, etc.

History

The history of Khirbet Ad Deir dates back 300 years, when the current residents of Surif inhabited the area. Derived from the Arabic name "Deir", which means “monastery”, Ad Deir village got its name from a Roman Catholic monastery that existed in the village when it was first inhabited. Before 1993, due to shortage of facilities, infrastructure and services, people left the village to inhabit nearby communities, including Surif. However, the latest efforts of the Village Council to rehabilitate and construct a well developed infrastructure have encouraged many original inhabitants to return to their lands in the village.

Photos of Ad Deir



Demography and Population

According to the first Palestinian Central Bureau of Statistics (PCBS) Census in 1997, the total population of Ad Deir village was 215 people, of which 103 were males and 112 were females. Thirty households resided in 36 housing units.

Age groups and gender

Table 1 below shows the population of Khirbet Ad Deir village as classified by sex and age group. Census data from 1997 shows that 49.8% of the total population was less than 15 years, 47.4% were in the 15-64 age group and 2.8% were 65 years old and above. Males constituted

47.9 % of the population, and the sex ratio in the village was 92 males for every 100 females (See table 1).

Sex	Age				Percent
	0 -14	15 -64	65 +	Total	
Male	53	47	3	103	47.9
Female	54	55	3	112	52.1
Total	107	102	6	215	100

Source: PCBS, May 1999. Population, Housing and Establishment Census-1997, Final Results

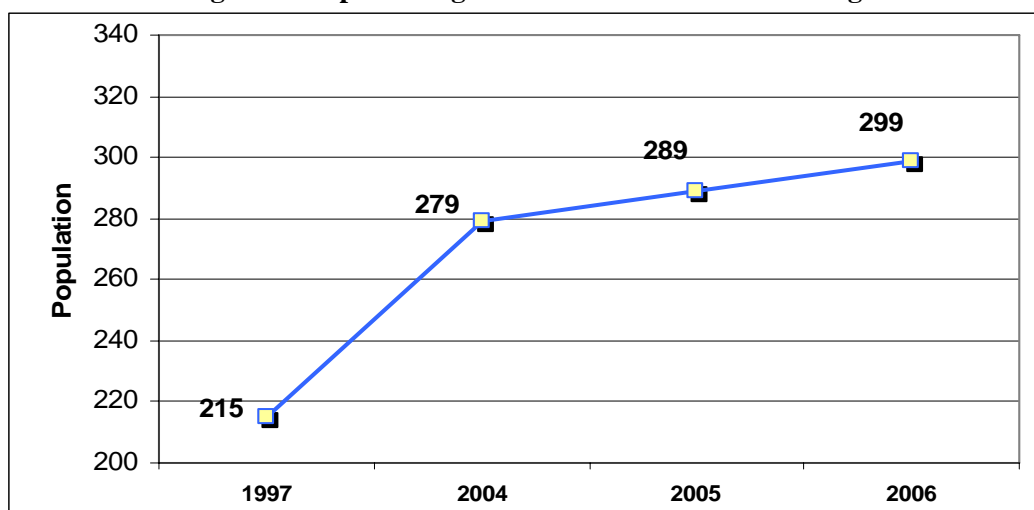
Population Growth

The Palestinian Central Bureau of Statistics estimated the population of Khirbet Ad Deir village at 299 people in mid 2006. The data in Table 2 indicates that the population of Khirbet Ad Deir village grew by 39.0 % between 1997 and mid 2006, an increase of 84 people over nine years.

	1997 Census	Mid-year population in		
		2004	2005	2006
Ad Deir village	215	279	289	299

Source: <http://www.pcbs.gov.ps/populati/pop10.aspx>

Figure 1: Population growth in Khirbet Ad Deir village



Families

All families in the village are descendents of one family, the Baradiyah family (برادعية). The subfamilies include Afanah (عفانة), Nassar (نصار), Odwan (عدوان) and Abu Khedeir (أبو خضير).

Economy

Many of Khirbet Ad Deir residents depend on agricultural activities for living with nearly 50% of the population working in the agricultural and floriculture sector. There are two flower farms in the village, each employing seven to ten workers. The second most significant sector upon which the village's residents depend is that of the Israeli labor market with roughly 40% of the village population depending on work within Israel for their livelihood. The rest of the workforce depends on employment within the Palestinian public and private sectors.

The village lacks industrial institutions and workshops as well as economic institutions; however, there are three groceries and one small blacksmithry workshop.

Based on the 2006 survey conducted by ARIJ in Hebron Governorate, the demographic groups most affected by Israeli restrictions during the second Intifada are:

1. Workers previously employed in the Israeli labour market;
2. Small-holder farmers;
3. Small-holder traders; and
4. Families of six or more individuals.

Labor Force

The 1997 Census data showed that 64.2% of the total population of Khirbet Ad Deir was within the working age (10 and above). Within this group, only 37 people (26.8%) were economically active, while 101 people (73.2%) were economically inactive. The data also showed that only males were economically active in Khirbet Ad Deir, and that 97.3% of them were employees. The largest group of economically inactive people included housewives and students, constituting 50.5% and 40.6% of the population, respectively. Table 3 shows the labor force statistics for Khirbet Ad Deir village.

Sex	Economically Active				Not Economically Active					
	Employed	Currently Unemployed	Unemployed (Never worked)	Total	Students	Housewives	Unable to work	Not working & Not looking For Work	Total	Total
M	36	1	-	37	15	-	5	4	24	61
F	-	-	-	-	26	51	-	-	77	77
T	36	1	-	37	41	51	5	4	101	138

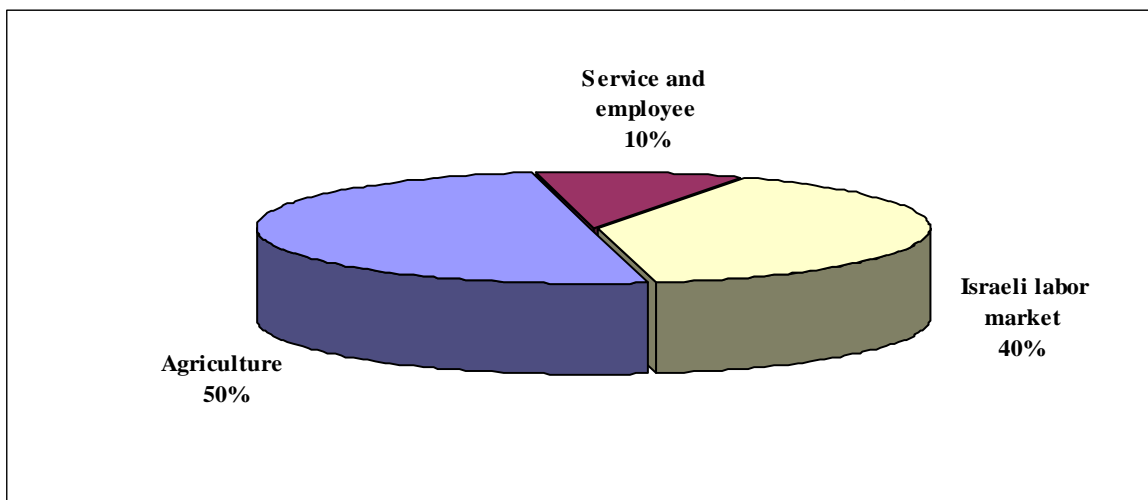
Source: PCBS, May 1999. Population, Housing and Establishment Census-1997, results

Following the outbreak of the second Intifada in September 2000, Israeli procedures against the Palestinian people have affected the economy of Khirbet Ad Deir. Israeli restrictions on both village resident and product movement have impeded farmers from marketing their produce. In addition, large areas of farms have been destroyed, and many crops and trees were uprooted, resulting in the loss of primary income for a significant percentage of the population.

ARIJ survey indicated that the economic shares of the population working are as follows:

- Agricultural sector 50 %
- Service sector 10 %
- Israeli labor market 40%

Figure 2: Economic activity in Khirbet Ad Deir village



Education

Data of 1997 Census indicated that 19.6% of Khirbet Ad Deir residents were illiterate, with men comprising 55.5% of the total illiterate population. Of the literate, 15.9% could read and write but had received no formal education, 31.9% had completed elementary education, 26.8% had completed preparatory education and 5.7% had completed secondary and higher education. Table 4 shows the 1997 status in Khirbet Ad Deir by sex and educational attainment.

Sex	Illiterate	Can read & write	Elementary	Preparatory	Secondary	Associate Diploma	Total
M	15	10	17	12	5	2	61
F	12	12	27	25	1	-	77
T	27	22	44	37	6	2	138

Source: PCBS, May 1999. Population, Housing and Establishment Census-1997, Final Results

According to the Ministry of Higher Education, during the 2006/2007 scholastic year, one school, government supervised 'Ad Deir Elementary Co-education School', existed in Khirbet Ad Deir. The school has three classes and four teachers, and provides elementary education to 45 students. There is also a kindergarten in Khirbet Ad Deir supervised by the Village Council, named 'Ad Deir Kindergarten', which provided pre-education services to 16 children in 2006.

As there is no secondary school for students in Khirbet Ad Deir, most students complete their school education to Surif village, located about 5 km from the village. There is a lack of a public transportation system between Surif and Khirbet Ad Deir forcing students to walk to secondary school, often discouraging students from completing their secondary education.

Health Status

Khirbet Ad Deir lacks health institutions, except for a mother and childcare center, which was established in 1998. Once every two months the Ministry of Health conducts health visits in the village, using the center’s facilities, but in general, there are no public or private health clinics in the village. In emergency cases, residents of Khirbet Ad Deir receive health services from neighboring localities such as Surif village, or they travel to Hebron City.

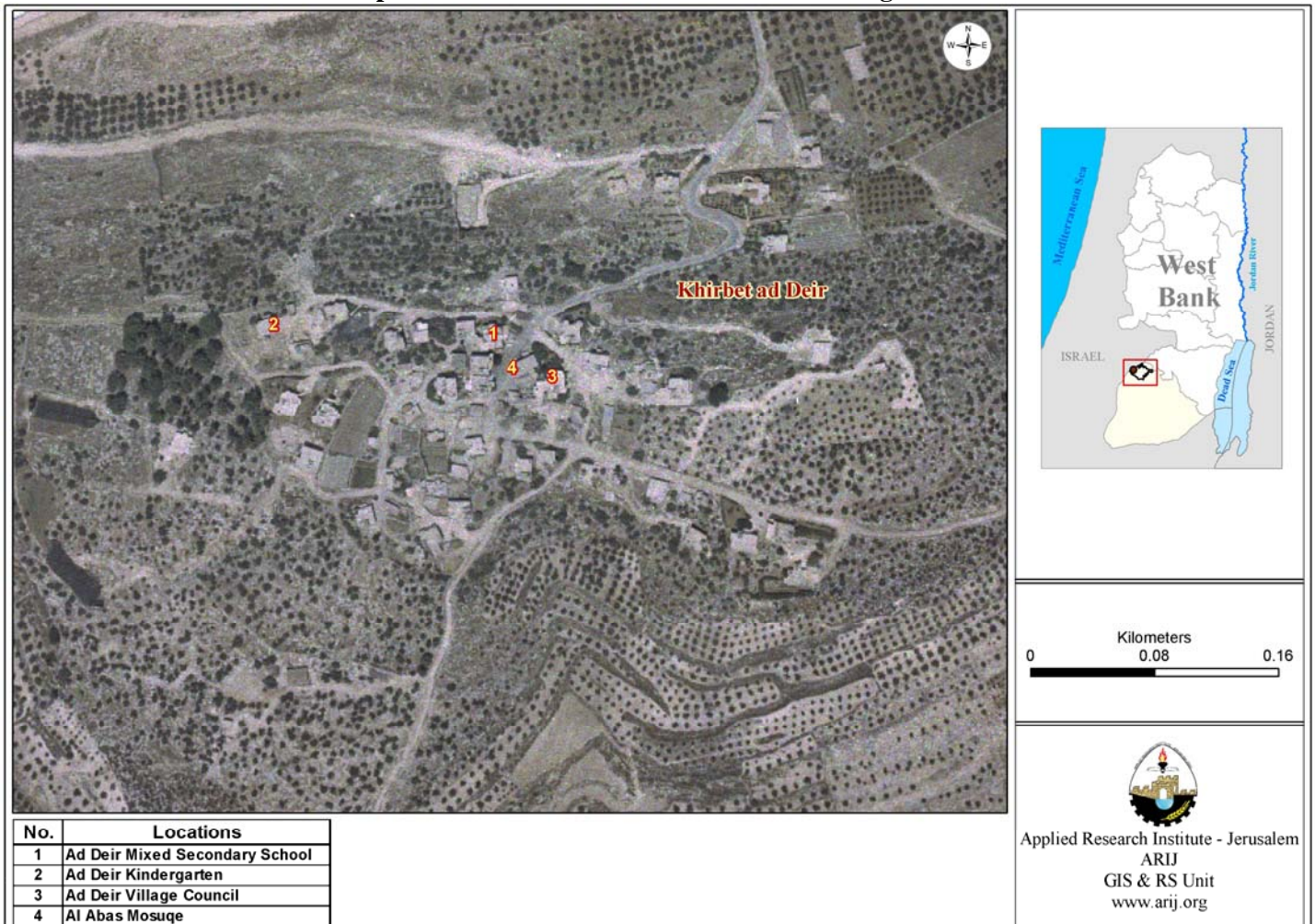
Religious and Archeological Sites

The only religious site in the village is Al Abbas Mosque, and it is considered the only place of worship and the site of Friday prayer services in the village.

Institutions and Services

Khirbet Ad Deir is a small rural village so residents receive most of their services from Hebron City. The only institution in the village is the Village Council.

Map 2: Main locations in Khirbet Ad Deir village



Infrastructure and Natural Resources

- **Telecommunication Services:** Ad Deir village connected to a telecommunication network in 2006.
- **Water Services:** All housing units in Khirbet Ad Deir village have been connected to a water network since 1993. The main provider of water is the Israeli Water Company (MEKROT). Other alternative water sources in the village include cisterns.
- **Electricity Services:** All housing units in Khirbet Ad Deir village have been connected to an electric network since 2003. Khirbet Ad Deir Village Council manages the distribution of electricity, which is supplied from Surif village.
- **Solid Waste Collection:** In Ad Deir village there is no solid waste management system. Households dispose of their wastes randomly; for example by burning the wastes in random open dumping sites.
- **Sewage Disposal Facilities:** Khirbet Ad Deir is not yet connected to a sewage disposal system; wastewater is collected in cesspits.
- **Transportation Services:** There are approximately 17.2 km of internal roads in Khirbet Ad Deir village. Around 4.7 km of these are surfaced and in a good condition and 12.5 km remain unsurfaced. The only transportation system available in the village is a bus from Surif, which passes in the village twice a day, at 8:00 am and at 2:00 pm.

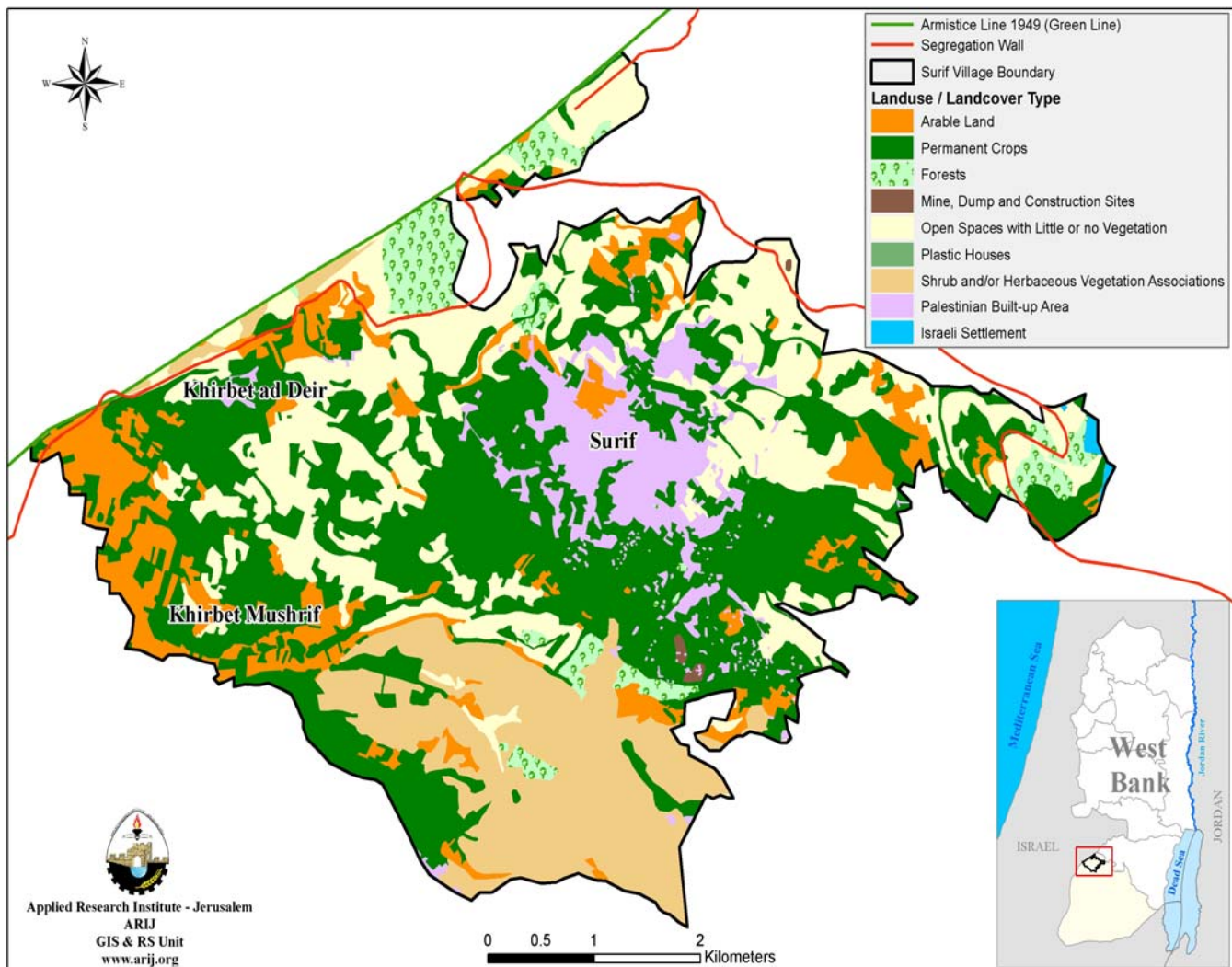
Agricultural Sector

As mentioned above, 50% of the village population is dependant on produce grown on its agricultural land. The total agricultural area in the village is about 3,000 dunums, 1,000 dunums of which remains uncultivated due to shortage of capital and water, and general access issues due to the Israeli restrictions.

Rainfall is the main source of water for irrigation in the village, but field survey data also indicates farmers' reliance on water taken from networks and cisterns. The village's main crops include vegetables and flowers, and there are two flower farms. There are about 8,000 m of agricultural roads in Ad Deir, most of which are suitable for driving tractors and other agricultural machines.

Data indicates that residents of Khirbet Ad Deir rear and keep livestock and 5% of residents breed domestic animals. There are 300 goats and 200 sheep in addition to 2 poultry farms, housing approximately 6,000 birds.

Map 3: Land use/ Land cover and Segregation wall route in Khirbet Ad Deir village



Impact of Occupation Practices

There are no settlements or military bases encroaching on village land, and until 2004, the village was only affected by Israeli military flying checkpoints constructed around the village, especially on the Green Line, in order to prevent Palestinians from entering Israel for work.

However, in 2004, the Israeli Authorities started the construction of the segregation wall near the village, and 1500 meters of the wall length passes through Ad Deir lands. The wire-mesh and barbed wire wall passes close to the village in the northern and eastern sides, and it has been responsible for the confiscation of 500 dunums of land in total, with 400 of these isolated behind the wall. Construction of the wall was also responsible for the destruction and uprooting of 800 trees.

Development Plans and Projects

Since 2004, Khirbet Ad Deir Village Council has implemented many projects to develop the village's infrastructure, receiving funding from donors from several organizations, including:

No.	Project name	Type	Funded by
1.	Rehabilitation of electricity network	Infrastructure	Kuwait Arabic Fund
2.	Rehabilitation of water network	Infrastructure	UNDP
3.	New School	Educational	Kuwait Arabic Fund

Locality Development Priorities and Needs

According to the Village Council, Khirbet Ad Deir suffers from a shortage of many infrastructural and services' needs. Table 8 shows the development priorities and needs of the village.

No	Sector	Strongly Needed	Needed	Moderately Needed	Not Needed	Notes
Infrastructural Needs						
1.	Opening and Pavement of Roads	*				8500 m
2.	Construction of New Water Networks				*	
3.	Rehabilitation of Old Water Networks				*	
4.	Construction of Water Reservoirs		*			
5.	Extending the Water Network to cover New Built up Areas				*	
6.	Construction of Sewage Disposal Network				*	
Health Needs						
1.	Building of New Clinics or Health Care Centre	*				
2.	Rehabilitation of Old Clinics or Health Care Centres				*	
3.	Purchasing of Medical Equipments and Tools				*	
Educational Needs						
1.	Building of New Schools				*	
2.	Rehabilitation of Old Schools				*	
3.	Purchasing of New Equipments for Schools				*	
Agriculture Needs						
1.	Rehabilitation of Agricultural lands		*			
2.	Building Cisterns			*		
3.	Construction of Barracks for Livestock			*		
4.	Veterinary Services				*	
5.	Seeds and Hay for Animals				*	

6.	Rehabilitation of Greenhouses		*			
7.	Field Crops Seeds		*			
8.	Plants and Agricultural Supplies		*			