

Nuba Village Profile



Prepared by



The Applied Research Institute - Jerusalem

Funded by



Spanish Cooperation



Azahar program

March 2007

Table of Content

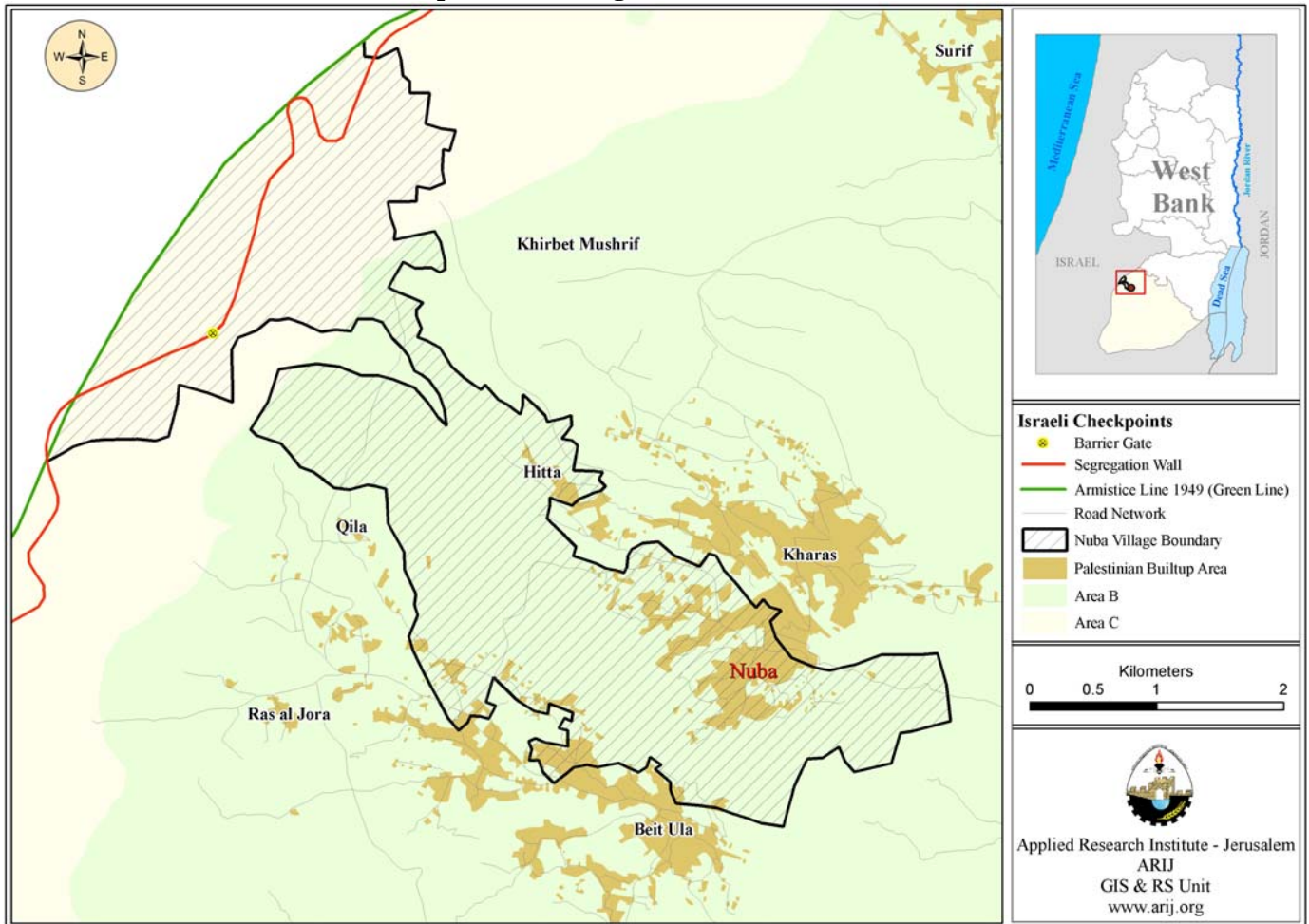
<i>Location and Physical Characteristics</i>	<u>2</u>
<i>History</i>	<u>3</u>
<i>Demography and Population</i>	<u>4</u>
<i>Economy</i>	<u>5</u>
<i>Education</i>	<u>7</u>
<i>Health Status</i>	<u>8</u>
<i>Religious and Archaeological Sites</i>	<u>9</u>
<i>Institutions and Services</i>	<u>10</u>
<i>Infrastructure and Natural Resources</i>	<u>10</u>
<i>Agricultural Sector</i>	<u>11</u>
<i>Impact of the Israeli Occupation</i>	<u>14</u>
<i>Development Plans and Projects</i>	<u>14</u>
<i>Locality Development Priorities and Needs</i>	<u>15</u>

Nuba Village Profile

Location and Physical Characteristics

Nuba is a Palestinian village in Hebron Governorate, located 12 km northwest Hebron city, in the south of the West Bank. The village is located within the southern Palestinian mountains, upon an east to west sloping plain. It is bordered by Halhul village to the east, Kharas to the north, Beit Ula to the south and the Green Line to the west.

Map 1: Nuba village location and borders



Prior to 1948, the total area of Nuba village was 22,886 dunums. During the 1948 war, Israel occupied and confiscated about 10,424 dunums, approximately half of the village area. Nuba village is located on Halhul's western mountains at a moderate elevation of 550 m above sea level. The mean annual rainfall in the village is 484 mm, the average annual temperature is 17 °C, and the average annual humidity is 60 % (ARIJ GIS).

Nuba has been governed by a Village Council since 1973. However, in 2005, a new council was elected, consisting of 9 members and 12 employees. The Village Council operations and responsibilities include:

1. Administration, planning and development,
2. Social welfare services,
3. Infrastructure maintenance of schools, water, electricity and solid waste.

History

Nuba is an old village that dates back to the Canaanite Period, deriving its name from the word "Nabo" (نبو), which means 'height'. During the Islamic Expansion, Umar Ibn Al Khattab designated the village as a religious site. An engraved in stone in the village, dating to the period of Islamic Expansion, mentions Nuba and the adjacent villages as Islamic sites.

Residents of Nuba trace their lineages to the Arab tribes from Al Hijaz, a northwest region of the Arabian Peninsula. They consist of three main clans, subdivided into subfamilies, some reaching eight families under one clan. Other residents in the village are Palestinians driven out from their original villages during the 1948 war.

Photos of Nuba



Demography and Population

According to the first Census implemented in the Occupied Palestinian Territory in 1997, the total population of Nuba village was 3,211, of which 1,656 were males and 1,555 were females. There were 472 households resident in 515 housing units (1997 census).

At that time, the population of Nuba village constituted 0.8% of the total population of Hebron Governorate.

Age groups and gender

The 1997 Census data listed in table 1 shows the population of Nuba village by age groups and sex. Data shows that 53.7 % are less than 15 years old, 43.1 % are in the age group 15-64 years and 3.3 % are 65 year and above. In 1997, the sex ratio in the village was 106.5 males for every 100 females, males constituted 51.6 % of the population and females constituted 48.4 % (See table 1).

Sex	Age				percent
	0 -14	15 -64	65 +	Total	
Male	903	710	43	1,656	51.6
Female	820	673	62	1,555	48.4
Total	1,723	1,383	105	3,211	100

Source: PCBS, May 1999. Population, Housing and Establishment Census-1997, Final Results

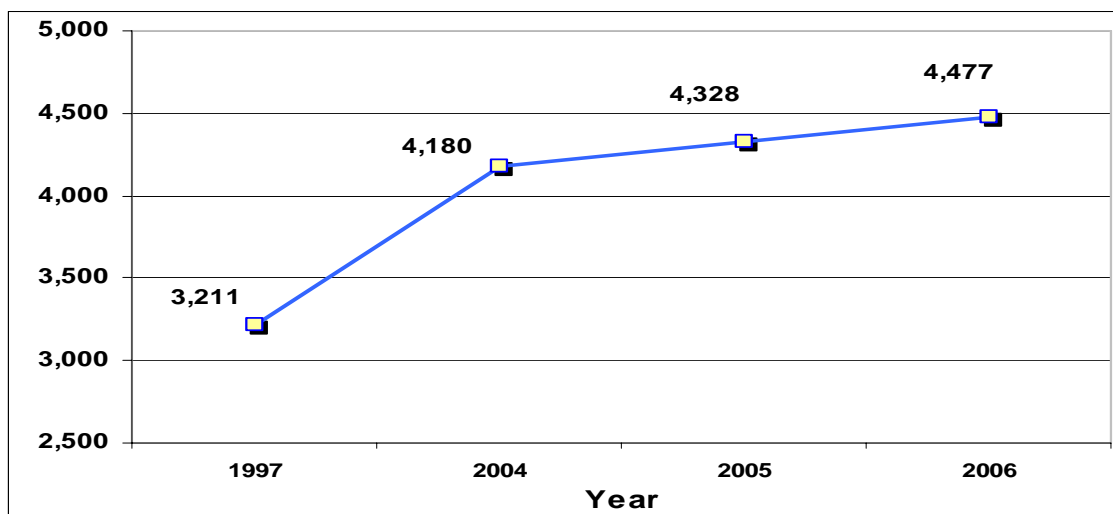
Population Growth

In mid 2006, the Palestinian Central Bureau of Statistics estimated the population of Nuba village at 4,477 people. The data in table 2 indicates that the population of Nuba village grew by 39.5% between 1997 and mid 2006, an increase of 1,266 people over ten years.

	1997 Census	Mid-year population in		
		2004	2005	2006
Nuba village	3,211	4,180	4,328	4,477

Source: <http://www.pcbs.gov.ps/populati/pop10.aspx>

Figure 1: Population growth in Nuba



Families

The residents of Nuba are comprised of three main clans: Al Dababsa (الدبابسة) (47%), Ash Shuroof (الشروف) (38%), and At Tarman (الطرمان) (14%). Other families in the village constitute 1%.

Economy

With the Israeli occupation of the West Bank in 1967, and Nuba's location bordering the Green Line, residents of the village were largely dependent on the Israeli labour market; about 60% of Nuba labour force worked in the Israeli labour market. Nuba's economic base also depends on economic activities such as agriculture, industry, trade and employment.

The agricultural sector in Nuba is limited by numerous factors. However, given Nuba's rural location and the generally stagnant Palestinian economy, the agricultural sector has proven an important role in providing jobs and improving the village food security. Another key economic sector, trade, has improved in recent years. Approximately 20 groceries, 10 service shops, a butcher and 1 clothing shop are providing services to Nuba residents. The Industrial sector is represented in the village by industrial and professional dealings including an automobile repair shop, several garages, five carpentry workshops, four blacksmith workshops, a stone cutting factory and a rubber processing plant.

Nuba village residents occupy positions in educational and health sectors, Palestinian National Security Forces, in addition to positions in many other public and private sectors. However, as the majority of the labor force is mainly dependant on the Israeli labour market, Israeli closures and the imposed system of entry permits, affected the village economy and the quality of life has altered significantly.

Based on the survey conducted in November 2006 by ARIJ in Hebron Governorate, the social groups most affected in the village by the Israeli restrictions during the second Intifada were:

- 1) Families maintaining six individuals and more,
- 2) Previous workers in the Israeli labour market,
- 3) Small traders,
- 4) Small farmers, and
- 5) Housewives and children.

Labor Force

The 1997 Census labor force statistics for Nuba village show approximately 58.4% of the total population of the village within the working age group 10 years and above. The percentage of women in the age of 10 years and above was assessed at 28.5% (915 women in total). Of the working age, 33.3% were economically active and 66.7% were non-economically active. Of the economically active, 94.9% were males and 5.1% were females, and 91.5% were employed. The largest groups of non-economically active were students and housewives, constituting 48.7% and 40.8%, respectively. Table 3 shows the labor force statistics in Nuba village in 1997.

Table 3: Nuba population (10 years and above) by sex and employment status

Sex	Economically Active				Not Economically Active						Total
	Employed	Currently Unemployed	Unemployed (Never Worked)	Total	Students	House-wives	Unable to work	Not working & Not looking For Work	Other	Total	
M	543	44	6	593	326	-	21	19	1	367	960
F	29	-	3	32	283	510	29	60	1	883	915
T	572	44	9	625	609	510	50	79	2	1,250	1,875

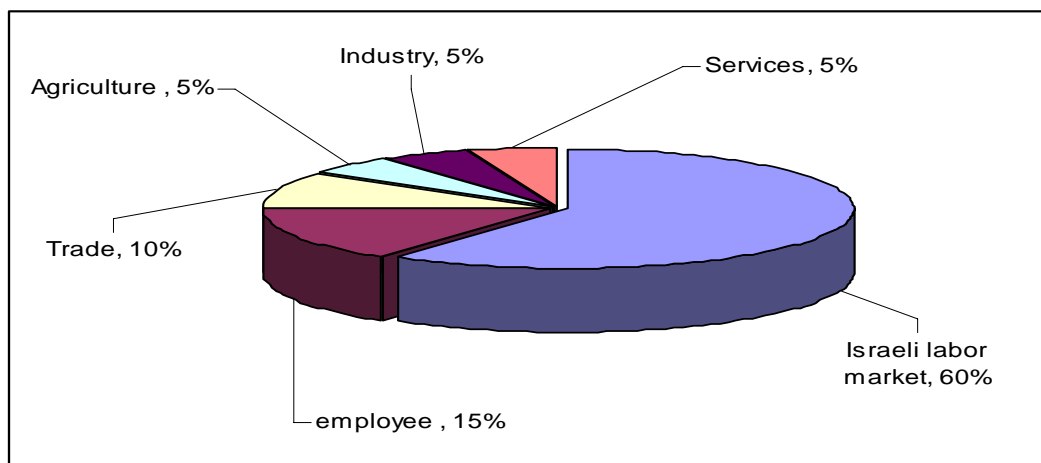
Source: PCBS, May 1999. Population, Housing and Establishment Census-1997, results

Since September 2000, Israeli procedures against the Palestinian people have affected the economy of Nuba. First, Israeli forces imposed restrictions on the residents' movements, stopping Palestinians from accessing their workplaces, both in Israel and settlements, as well as preventing Palestinians from reaching to their own farmlands. Lack of access to their lands to cultivate or harvest their crops, and the frequent closures have hampered farmers attempting to market their produce. Furthermore, many crops and trees have been uprooted and destroyed by Israeli forces, and as a result, many residents have lost their primary source of income.

The survey indicated that the share of the population working in the various sectors of the economy is listed below by percentage:

- The agriculture sector 5%
- The service sector 5%
- Israeli labour market 60%
- The industrial sector 5%
- The trade sector 10%
- The employee sector 15%

Figure 2: Percentage of economic activity in Nuba village



Education

According to the 1997 Census, about 10.4% of the residents were illiterate. Women comprised a larger percentage than men, 78.5% of the total illiterate population. Of the literate population, 13.8% of residents could read and write, 25.4% completed elementary education, 34% completed preparatory education and 16.3% completed their secondary and higher education. Table 4 shows the education status in Nuba by sex and education attainment in 1997.

Table 4: Nuba population (10 years and above) by sex and educational attainment

Sex	Illiterate	Can read & write	Elementary	Preparatory	Secondary	Associate Diploma	Bachelor	Master	PhD	Total
M	42	130	244	328	112	49	47	4	2	958
F	153	128	232	309	53	29	9	-	-	913
T	195	258	476	637	165	78	56	4	2	1871

Source: PCBS, May 1999. Population, Housing and Establishment Census-1997, Final Results

Field survey data indicated that there were three levels of education in Nuba village, preschool (kindergartens), elementary, and secondary education. There are four schools in the village, two boys' schools, and two were girls' schools. All the schools in Nuba are run by the Ministry of Higher Education. The number of schools by name, stage, sex and supervising authority is shown in table 5.

Table 5: The schools in Nuba by name, stag, sex and supervising authority

School Name	Stage	Sex	Supervising Authority
1. Nuba /Kharas Boys Secondary School	Secondary	Male	Governmental
2. Nuba/Kharas Boys Elementary School	Elementary	Male	Governmental
3. Nuba Gils Secondary School	Secondary	Female	Governmental
4. Nuba Girls Elementary School	Elementary	Female	Governmental

The data of Ministry of Higher Education show that at the end of the 2005/2006 scholastic year there were 54 classes, 73 teachers and 1706 Students in Nuba (See table 6).

Table 6: Total number of schools, classes and students by sex in Nuba village (2004-2005)

Gender	Schools	Class	Teachers	Students
Male	2	28	38	898
Female	2	26	35	808
Total	4	54	73	1706

Source: Ministry of Higher Education –Hebron Directorate -2006/2007

In 2006, there were three kindergartens in Nuba. These kindergartens provided pre-school education services to 255 children. Table 7 shows the number of kindergartens by name, number of children and supervising authority.

Table 7: The kindergartens in Nuba by name, number of class, children, teachers and supervising authority.

No.	Kindergarten Name	Classes	Children	Teachers	Supervising Authority
1.	Nuba Charitable Society Kindergarten	4	140	4	Charitable Society
2.	Al Huda Al Namuthajiyah Kindergarten	2	40	3	Private
3.	As Safriya Kindergarten	2	45	2	Private

The main educational obstacles in Nuba are:

1. Shortage of classrooms due to increases in student enrolment,
2. Shortage of services and equipments, and
3. Lack of services to meet school activities, such as the poor condition of the schools' playgrounds.

Health Status

Historically, herbal medicine was considered the primary form of medicine in Nuba until the British Mandate of Palestine, when residents began utilizing formal medical practices and clinics available in Beit Al Jammal village, or the Al Baraka Health care center in Al Arroub.

During the Jordanian rule of the West Bank, residents of Nuba went to Tarqumia for treatment and medication, and they kept doing so until 1956, when the first health care clinic, governed by the health department of Hebron Governorate, was established midway between Nuba and Kharas villages. The clinic provided primary health care to patients, in addition vaccination and rapid treatment to victims of sudden illness or trauma.

In 1995, a governmental clinic was opened within Nuba boundaries. The clinic was located in the Charitable Society building until 1997, then moved to a new building, also related to the Charitable Society, in Skeikh Isma'il area. The clinic includes a medical lab and provides many health services such as illness treatments, vaccination, and mother and child care. Nowadays, there are many private, governmental and charitable health facilities in the village as shown in table 8.

Table 8: Number of health institutions in Nuba by supervising authority.

Institution	Governmental	Private	Charitable	NGO
Physician Clinic	-	3	1	-
Dental Clinic	1	-	-	1
Health Clinic	1	-	-	-
X- Ray Centre	-	-	-	-
Medical Lab	1	1	-	-
Maternity & Pediatric Center	-	-	-	-
Pharmacy	-	1	-	-
Other	-	-	-	-
Total	3	5	1	1

In case of emergencies or urgent needs unavailable within the village boundaries, the residents travel to Hebron City (20 km) or Halhul (7km) to receive health services and treatment.

In spite of the functional health facilities in the village, the health sector still suffers from obstacles to provide sufficient medical care. For example, the village lacks a complete medical treatment facility capable of providing inpatient care; in addition, the village lacks an ambulance for emergency cases and the closest hospital is at a considerable distance.

Religious and Archaeological Sites

Nuba's importance as a religious site derives from the presence of Al Omary Mosque, which includes the engraved script by Umar Ibn al Khattab, assigning the village as a holy site related to Al Aqsa Mosque. The village also contains four places of religious commemoration: Sheikh Isma'il Shrine, Abu Raghif Shrine, Sheikh Jarrah Shrine and Sheikh Youssef Shrine. Other religious places in the village include Al Zawiyah Ash Sharqiyah Mosque, Al Zawayyah Al Gharbiyah Mosque, Al Baq'ah Mosque and Al Shuhada Mosque.

Nuba has also gained a general historical and archeological importance. There are a number of historical and archeological sites in Nuba, for example, several ancient wells, in addition to many water springs. Be'ir el Maleh is a well with a 25 m underground tunnel that reaches a water spring, which people use to heal skin diseases. Be'ir Al Qaws, named for the arrows that are engraved on the stone edges, is another ancient well that provides a continuous discharge of groundwater. Other historically significant water springs in the village include Be'ir Al Suweida and Be'ir Khalal. There are also three ancient ruined sites in the village:

- **Khirbet Hitta** is an area of 30 dunums, populated with Bedouins, located in western Nuba, and about 1 km away from the village center. The site has many archeological caves, ruins, and old drawings and inscriptions.
- **Khirbet Al Ahmar** is an area of 20 dunums, located northern Nuba. It is populated and has many archeological caves.
- **Khirbet Baten Al Asfar** is an area of 15 dunums to the south of Nuba. The site has many ancient ruins related to the Roman and Canaanite periods.

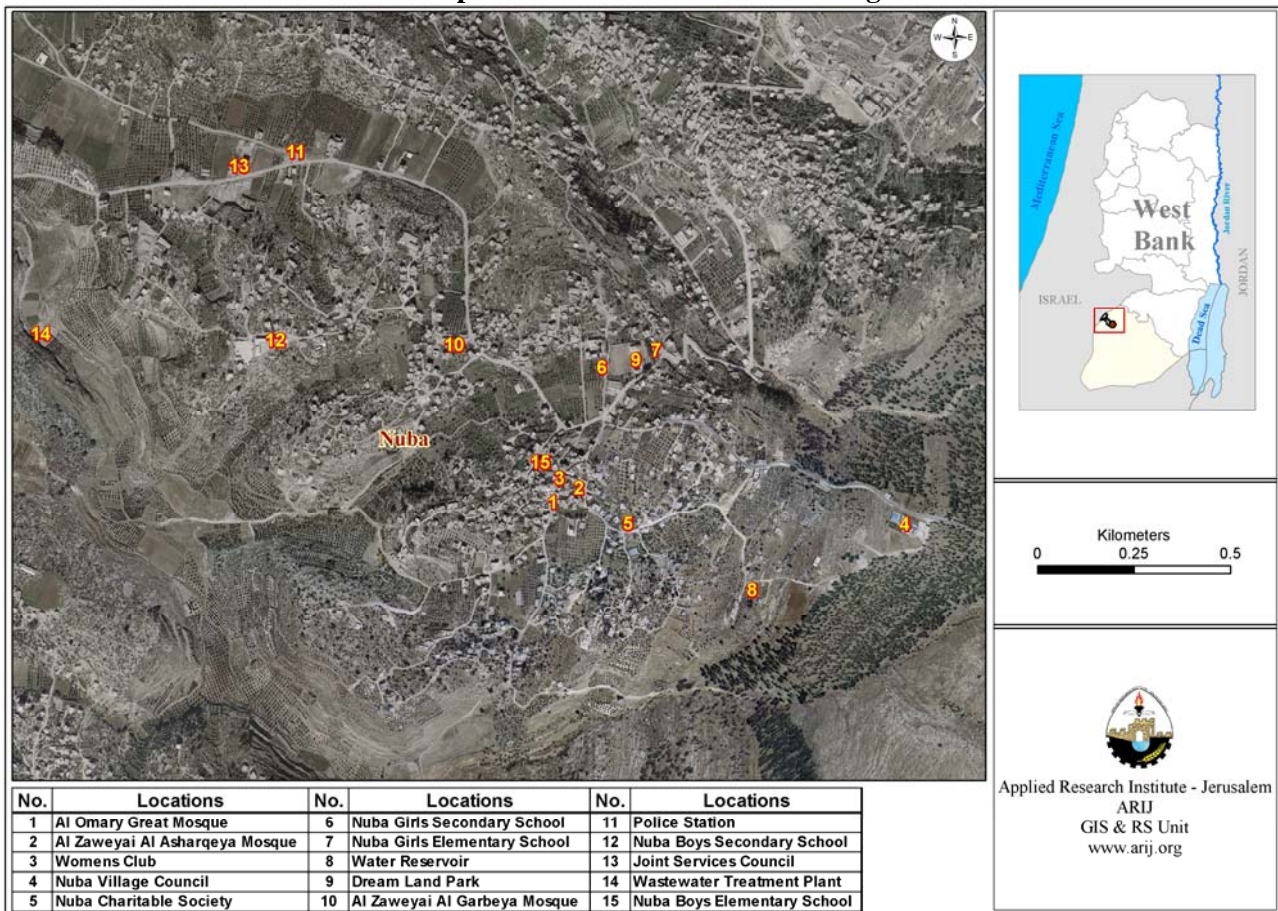
Although there are many archeological and historical sites in the village, none is currently utilized for recreational or tourist use.

Institutions and Services

Nuba is a small rural village, and in so, the residents get most of their services from Hebron city, as it is the main city in the Governorate. However, the village has three main institutes: a small post office, police station and security office. Nuba also has five organizations, which are:

1. Nuba Village Council: Established in 1973, it is the supreme institution in the village and provides many services for the village.
2. Nuba Charitable Society: a charitable institution which provides services to the residents.
3. Nuba Sport Club: a social and cultural institution which provides services for youth.
4. Women Club: a social institution for children and women.
5. Dar Alqur'an Al Kareem: provides cultural and religious education.

Map 2: Main locations in Nuba village



Infrastructure and Natural resources

- **Telecommunication Services:** Approximately 55% of Nuba's housing units are connected to the telecommunication network.

- **Water Services:** Nuba has been connected to the water network since 1975; almost 90% of the housing units are connected. The domestic water supply per capita is 81.0 (L/day), and currently, the Palestinian Water Authority (PWA) is the main provider for water resources. Cisterns are alternative resources to water networks. The village also owns a water reservoir with a 500 cubic meter capacity. The main problem that faces water services in the village is that the network is old and needs reconstruction.
- **Electricity Services:** Nuba has been connected to the electricity network since 1999 and approximately 90% of the housing units in the village are connected. The Village Council of Nuba manages the distribution of electricity, which is supplied by the Israeli Electric Company.
- **Solid Waste Collection:** Solid waste management in Nuba is operated by the Joint Services Council of the north and west localities of the Hebron Governorate. According to ARIJ field survey data, the village produces four tons of solid waste daily. This is collected from residential areas and sent to a dumping site owned by the Joint Services Council located approximately 6km away from Nuba. Dumping is the main method used to dispose the collected solid waste.
- **Sewage Disposal Facilities:** Nuba Municipality had constructed a new sewage network in 2005. The new network covered less than 50% of the village housing units, and the rest rely on cesspits. The annual volume of wastewater produced in Nuba is 0.0564(MCM/yr).
- **Transportation Services:** There are about 40 km internal roads in Nuba village, 20 km are paved and in a good condition, 5 km are paved but in a bad condition and 15 km are not paved at all. There are five buses and ten taxis for transportation in Nuba. The main obstacles in front of passengers and transportation system in Nuba include:
 1. Israeli checkpoints and barriers;
 2. Poor road condition; and
 3. The transportation system is poorly developed and lacks sufficient vehicles.

Agriculture Sector

While the agricultural sector is generally considered very important as the main productive sector for rural Palestine, Nuba's agricultural sector plays a very limited role in the village's economy. Lack of water resources, modern technology in agricultural production, marketing channels and the infrastructural agricultural roads are some of the problems standing in the way of agricultural development Nuba.

Nuba village lies on a total area of 15,460 dunums. 8,200 dunums are considered arable land; however, only 4,856 dunums are cultivated.

Locality	Total Area	Arable Land		Build up Area	Forests Area	Open Spaces and Rangelands
		Cultivated Area	Uncultivated Area			
Nuba	15,460	4,856	3,344	700	700	5,860

Source: Palestinian Ministry of Agricultural (MoA), 2006

As shown in Table 10, there are about 5 dunums of greenhouses, but no tunnels in Nuba village. 3 dunums are used for growing cucumber and 2 dunums are used for growing tomatoes.

Locality	Greenhouses	High Tunnels	Low Tunnels	Total
Nuba	5	0	0	5

Most agricultural activities in Nuba are dependant on rain, but farmers also use the water network and the storage cisterns for further irrigation. The main crops cultivated in the village include olives, grapes, field crops and vegetables.

Table 11 shows the different types of rain-fed and irrigated open cultivated vegetables in the village of Nuba. The rain-fed fruity vegetables are the most cultivated with an area of about 117 dunums. The most common vegetables cultivated within this area are gumbo and squash.

Locality	Total fruity vegetables		Total leafy vegetable		Total green legumes		Total bulbs		Total other vegetables		Total rain fed and irrigated open vegetables	
	RF	Irr	RF	Irr	RF	Irr	RF	Irr	RF	Irr	RF	Irr
Nuba	117	12	5	12	15	3	0	6	0	20	137	53

RF: Rain-fed, IRR: Irrigated

There are two types of aromatic medical plants in the village of Nuba, thyme and mint, which spread over a total area of four dunums.

Locality	Total aromatic medicinal plants		
Nuba	Rain-fed	Irrigated	Total
	0	4	4

In the village of Nuba, there is a total area of 3,820 dunums planted with olive trees. Other trees planted in the area are mostly grape vines trees, apricot trees and fig trees.

Locality	Total area of olives		Total area of citrus		Total area of stone-fruits		Total area of pome fruits		Total area of nuts		Total area of the other fruit		Total area of horticulture and olive tree	
	RF	Irr	RF	Irr	RF	Irr	RF	Irr	RF	Irr	RF	Irr	RF	Irr
Nuba	3,820	0	0	0	28	0	3	0	84	0	124	0	4,059	0

RF: Rain-fed, IRR: Irrigated

Table 14 shows the total field crops cultivated in the village of Nuba. Cereals, in particular wheat, white corn and barley, are the most cultivated crops with an area of about 960 dunums. In addition, the cultivation of dry legumes crops, mostly lentils, and forage crops is common in the village of Nuba.

Locality	Total Cereals		Total bulbs		Dry legumes		Oil crops		Total seeds		Total forage crops		Total stimulating crops		Total other crops		Total Field crops	
	RF	Irr	RF	Irr	RF	Irr	RF	Irr	RF	Irr	RF	Irr	RF	Irr	RF	Irr	RF	Irr
Nuba	960	0	12	0	70	0	0	0	0	0	42	0	5	0	0	0	1089	0

RF: Rain-fed, IRR: Irrigated

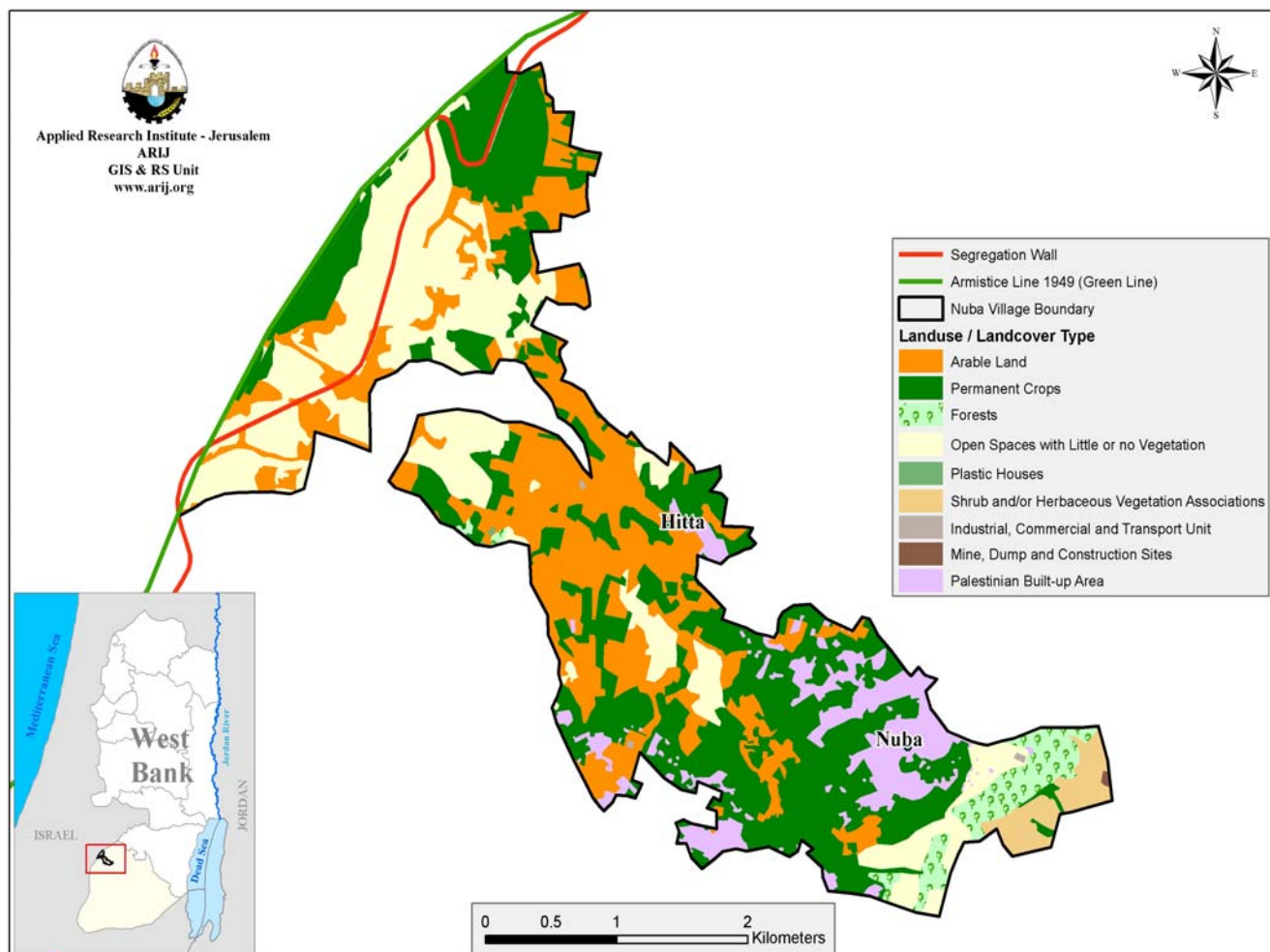
Data from the Village Council indicates that some families in Nuba, comprising 1% of the population, depend on livestock rearing and dairy production. In addition, there are ten poultry farms with approximately 2,000 birds as well as more than 114 beehives producing about 1,000 kg of honey per season. In 2006, ARIJ had distributed 36 bee hives to more than 12 beneficiaries from the village.

Locality	Cows*	Sheep	Goats	Camels	Horses	Donkeys	Mules	Broilers	Layers	Bee Hives
Nuba	80	1,800	700	0	5	25	15	30,000	2,000	114

*Including cows, bull calves, heifer calves and bulls

There are approximately 5 km of agricultural roads in Nuba. According to the Village Council, these roads are insufficient as the available roads are suitable only for tractors and other agricultural machines.

Map 3: Land use/ Land cover and Segregation Wall route in Nuba village.



Impact of the Israeli Occupation

There are no settlements or Israeli military bases on Nuba village’s land. The main confiscation of village land was in 1948. Sometimes the Israeli military forces construct a flying checkpoint on the main roads leading to Nuba. This checkpoint places restrictions on resident’s movements, causing difficulties to access health services in other localities, and making it difficult for teachers and students to access schools and universities, and farmers to access their lands.

Development Plans and Projects

In the past two years, Nuba Village Council has implemented many projects to serve the village, funded by various donors. These projects include:

Table 9: Development plans and projects in Nuba village

No.	Project name	Type	Funded by
1.	Building the first and second floors of Nuba Secondary Girls School	Educational	Hebron Municipality and Village Council.

2.	Opening and rehabilitation of the main and link Roads (5 km)	Infrastructure	Village Council
3.	Connecting new housing units with sewage network.	Infrastructure	Village Council
4.	Extending electricity network	Infrastructure	Village Council

Locality Development Priorities and Needs

According to Nuba Village Council the village is in need of much development. Table 10 shows the development priorities and needs in the village.

Table 10: Development Priorities and Needs in Nuba						
No.	Sector	Strongly Needed	Needed	Moderately Needed	Not Needed	Notes
Infrastructural Needs						
1.	Opening and Pavement of Roads	*				5 km new roads
2.	Construction of New Water Networks				*	
3.	Rehabilitation of Old Water Networks				*	
4.	Construction of Water Reservoirs				*	
5.	Extending the Water Network to cover New Built up Areas				*	
6.	Construction of Sewage Disposal Network	*				
Health Needs						
1.	Building of New Clinics or Health Care Centre		*			
2.	Rehabilitation of Old Clinics or Health Care Centres				*	
3.	Purchasing of Medical Equipments and Tools			*		
Educational Needs						
1.	Building of New Schools	*				Elementary school
2.	Rehabilitation of Old Schools		*			
3.	Purchasing of New Equipments for Schools		*			
Agriculture Needs						
1.	Rehabilitation of Agricultural lands			*		1500 dunums
2.	Building Cisterns		*			10 cisterns
3.	Construction of Barracks for Livestock		*			12 barracks
4.	Veterinary Services		*			
5.	Seeds and Hay for Animals			*		
6.	Rehabilitation of Greenhouses			*		6 greenhouses
7.	Field Crops Seeds			*		
8.	Plants and Agricultural Supplies			*		