

Kureise Village Profile



Prepared by



**The Applied Research Institute - Jerusalem
ARIJ**

Funded by



Spanish Cooperation



Azahar program

January 2008

Table of Content

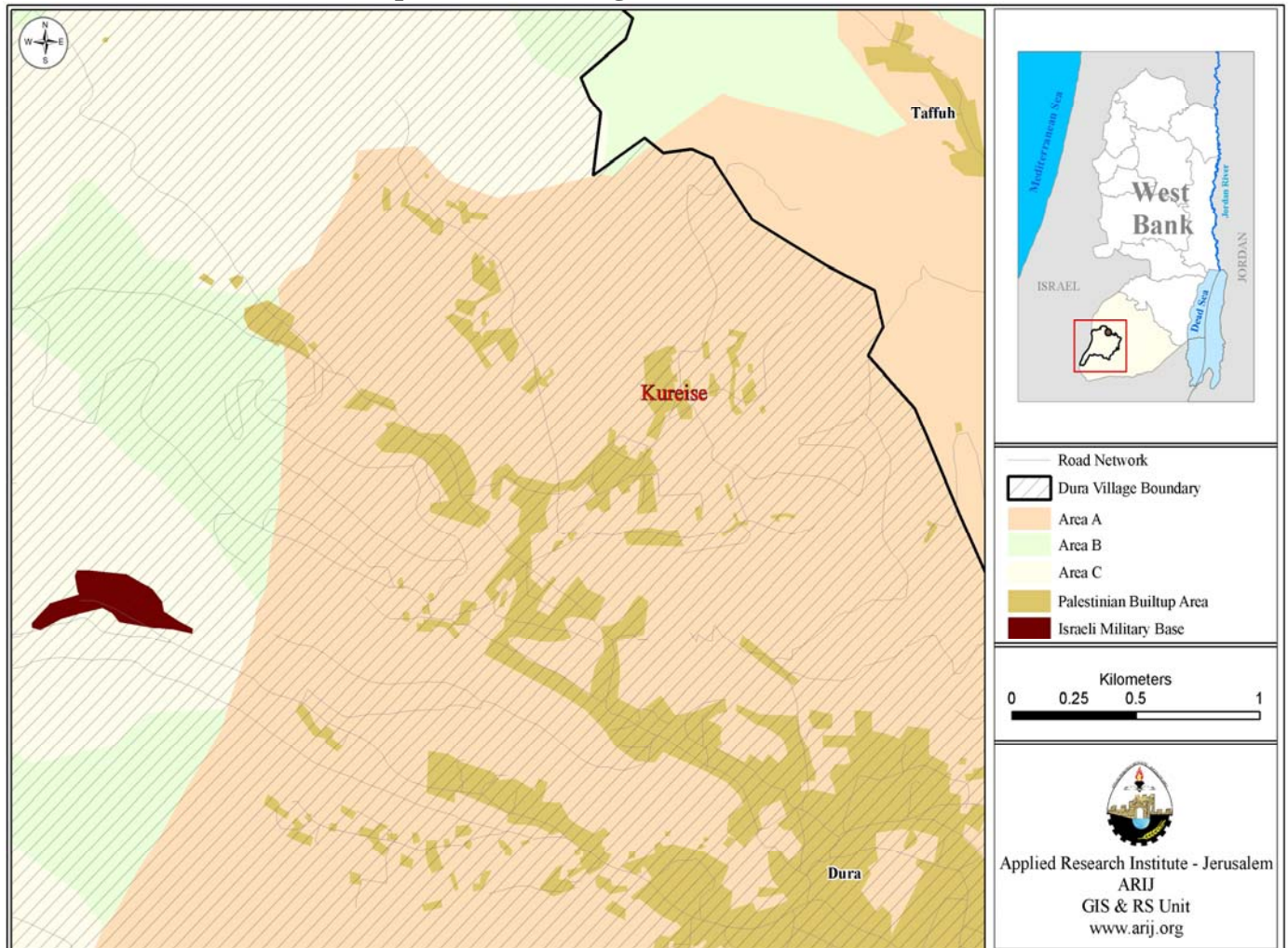
<i>Location and Physical Characteristics</i>	<i>2</i>
<i>History</i>	<i>3</i>
<i>Demography and Population</i>	<i>3</i>
<i>Economy</i>	<i>5</i>
<i>Education</i>	<i>6</i>
<i>Health Status</i>	<i>7</i>
<i>Religious and Archeological Sites</i>	<i>8</i>
<i>Institutions and Services</i>	<i>8</i>
<i>Infrastructure and Natural Resources</i>	<i>9</i>
<i>Agricultural Sector</i>	<i>9</i>
<i>Development Plans and Projects</i>	<i>12</i>
<i>Locality Development Priorities and Needs</i>	<i>12</i>

Kureise Village Profile

Location and Physical Characteristics

Kureise (كريسه) is a Palestinian village in Dura area located 12 km west of Hebron city, in the southern part of the West Bank. It is bordered by Rafada village to the east, Taffuh village to the north, Suba and Humsa villages to the west, and Dura city to the south.

Map 1: Kureise village location and borders



The total area of Kureise village is estimated to 7,000 dunums, of which 530 dunums are classified as 'built up' area, 4,050 dunums are agricultural area and 1,475 dunums are open space and forest area.

Kureise village is located on mountains area at the moderate elevation of 793m above sea level. The mean annual rainfall in Kureise village is 436 mm; the average annual temperature is 15.7 °C, and the average annual humidity is 60.6% (ARIJ GIS).

Kureise village has been incorporated in Dura Municipality since 2004, but it has its own Project Committee since 1950. Today this comprises of 3 members but with no fulltime employees. The Project Committee operations and responsibilities include:

1. Administration, planning and development;
2. Social development services;
3. Infrastructure maintenance water, electricity, solid waste collection, and the distribution of social services.

History

The history of Kureise village dates back to Turkish period. Its residents are from families that have been living in the area for a long time.

Photos of Kureise



Demography and Population

According to the Palestinian Central Bureau of Statistics (PCBS) Census in 1997, the total population of Kureise village was 1,637 people, of which 806 were males and 831 were females. There were 258 households residents in 286 housing units (1997 census).

Age groups and gender

The data of the 1997 census reveals that 53% Kureise village's population were less than 15 years, 44.7% were in the aged between 15-64 years and 2.3% were 65 year and above (See table 1).

Table 1: Kureise village population by sex and age group					
Sex	Age				percent
	0 -14	15 -64	65 +	Total	
Male	428	359	19	806	49.2
Female	439	372	20	831	50.8
Total	867	731	39	1,637	100

Source: PCBS, May 1999. Population, Housing and Establishment Census-1997, Final Results

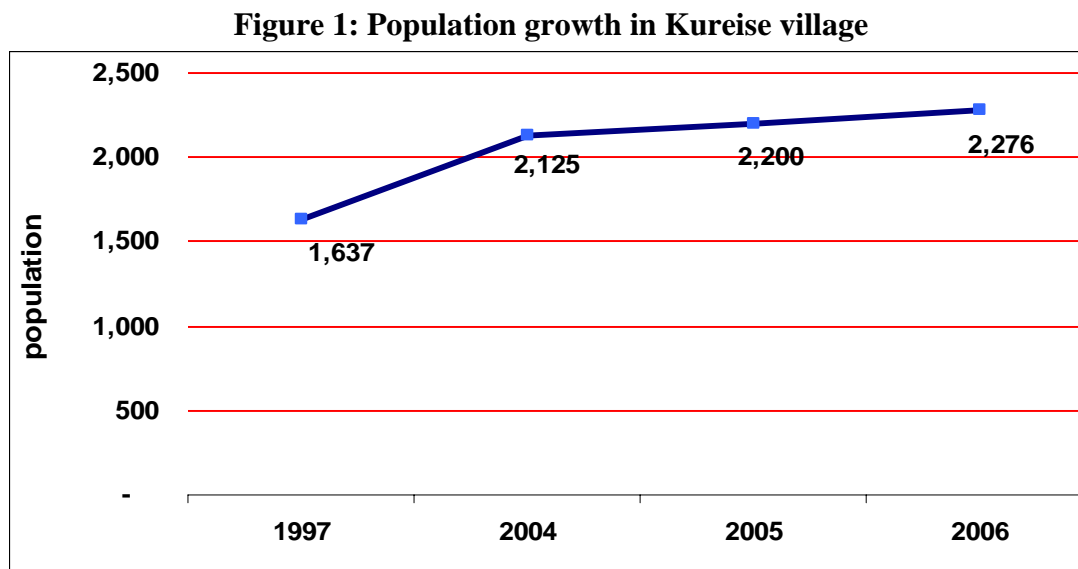
The sex ratio in the village was 97 males for every 100 females. Males constitute 49.2% of the population and females constitute 50.8%.

Population Growth

The Palestinian Central Bureau of Statistics estimated the population of Kureise village by mid 2006 to 2,276 people. The data in table 2 indicates that the population of Kureise village grew by 39% between 1997 and mid 2006, an increase of 639 people over ten years.

Table 2: Projected population for Kureise village 2004 -2006				
	1997 census	Mid-year population in		
		2004	2005	2006
Kureise village	1,637	2,125	2,200	2,276

Source: <http://www.pcbs.gov.ps/populati/pop10.aspx>



Families

The population of Kureise is comprised of three main families: Ar-Rjoob (الرجوب) (70%), 'Ameryah (عميره) 10%, Sharha (شرحه) (10%) The final 10% is made up of other smaller families.

Economy

Since the Israel occupation of the West Bank in 1967, residents of Kureise depended mainly on the Israeli labor market. As of the mid of 2007 more than 60% of the Kureise labor force were dependent on the Israel labor market. In addition to the Israeli labor market the economy of Kureise depends highly on the agricultural sector. This accounts for 20% of the total labor force. The remaining proportion of residents depends on the public sector and trade sector. Kureise has two major institutions, one is Al 'Anwar fuel station and another is a Tourist park cave. The village also has 8 groceries that provide trading services for the residents.

Based on the ARIJ survey conducted in November 2007 in Hebron Governorate localities, the unemployment rate in Kureise village stood at 30%. The survey data also indicated that the social groups most affected in the village by Israeli restrictions during the second Intifada were:

- 1) Workers previously employed in the Israeli market,
- 2) Small-scale farmers,
- 3) Small-scale Traders.

Labor Force

The 1997 census showed that in Kureise about 59.2% of the population were within the working age group 10 years and above, (which is considered a high percentage compared with less than 45% on the national level). Out of 969 people of the working age, 344 people (35.5%) were economically active in the labor force, and 625 people (64.5%) were not economically active persons. Of the economically active people 85.5% were males and 14.5% were females. 93% were employed, 3.8% were unemployed and 3.2% were unemployed and had never worked. The largest groups of non-economically active people are the students and housewives, who constitute 52.2% and 39.4% respectively. Table 3 shows the labor force status in Kureise village.

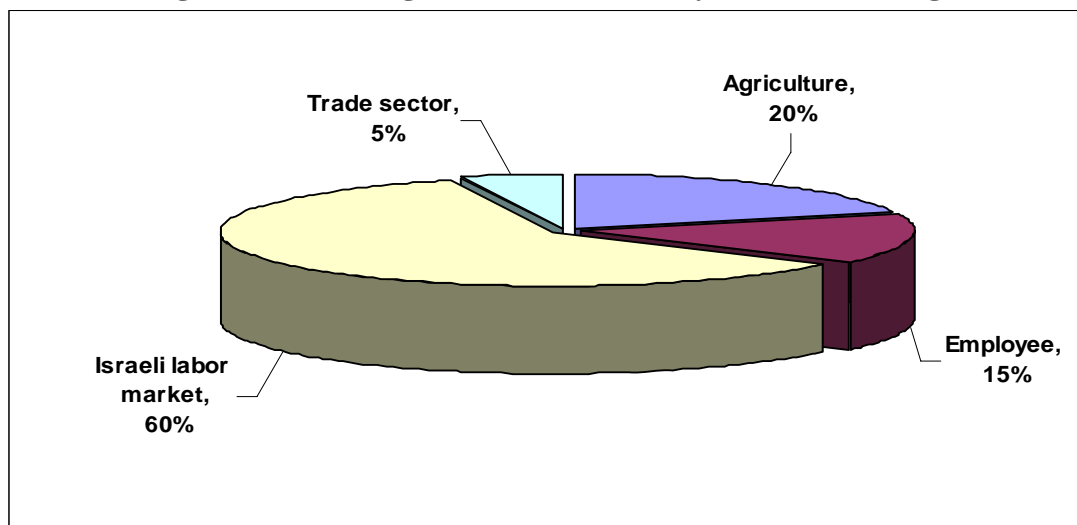
Table 3: Kureise population (10 years and above) by sex and employment status											
Sex	Economically Active				Not Economically Active						Total
	Employed	Currently Unemployed	Unemployed (Never Worked)	Total	Students	House wives	Unable to work	Not working & looking For Work	Other	Total	
M	274	13	7	294	177	-	7	1	6	191	485
F	46	-	4	50	149	246	3	27	9	434	484
T	320	13	11	344	326	246	10	28	15	625	969

Source: PCBS, May 1999. Population, Housing and Establishment Census-1997, results

The survey also indicated that the share of the population working in the various sectors of the economy is listed below by percentage:

- The agriculture sector 20 %,
- Israeli labor market 60%.
- Employee in Governmental or Private institutions 15 %
- The trade sector 5 %,

Figure 2: Percentage of economic activity in Kureise village



Education

According to the 1997 census, the education status in Kureise village indicated that about 10.6% of the residents were illiterate, with women (72.8%) comprise a greater percentage of illiterates than men (27.2%). Of the literate population, 16.7% of residents could read and write, 27.2% had completed elementary education, 28.3% had completed preparatory education and 17.2% had completed their secondary and higher education. Table 4 shows the education status in Kureise by sex and education attainment in 1997.

Sex	Illiterate	Can read & write	Elementary	Preparatory	Secondary	Associate Diploma	Bachelor	Higher Diploma	Master	PhD	Total
M	28	83	140	124	63	22	24	-	1	-	485
F	75	79	124	150	39	13	4	-	-	-	484
T	103	162	264	274	102	35	28	-	1	-	969

Source: PCBS, May 1999. Population, Housing and Establishment Census-1997, Final Results

According to the field survey there are three schools in Kureise village; two schools for boys and one school for girls. The three schools are supervised by government sector.

Table 5: The schools in Kureise by name, stag, sex and supervising authority		
School Name	Kind by Sex	Supervising Authority
1. Kureise Boys Elementary School	Male	Governmental
2. New Kureise Boys Elementary School	Male	Governmental
3. Kureise Girls Elementary School	Female	Governmental

According to Ministry of Higher Education (MOHE) data, by the end of the 2006/2007 scholastic year there were 785 students (384 males and 401 females), 38 teachers, and 29 classes.

Table 6: Total No. of schools, classes, teachers and students by sex in Kureise village (2006-2007)				
		Government	Private	Total
Male	No. of Schools	2	-	2
	No. of class	15	-	15
	No. of Teachers	20	-	20
	No. of Students	384	-	384
Female	No. of Schools	1	-	1
	No. of class	14	-	14
	No. of Teachers	18	-	18
	No. of Students	401	-	401

Source: ARIJ Data Base – 2006

In the 2006/2007 scholastic year, there were three kindergartens in Kureise village. These kindergartens provided pre-school education services to 185 children. Table 7 shows the number of kindergartens by name, number of children and supervising authority.

Table 7: The kindergartens in Kureise by name, number of class, number of children, number of teachers and supervising authority					
No.	Kindergarten Name	Number of Classes	Number of Children	Number of Teachers	Supervising Authority
1.	Bent Areaaf development Society	4	133	5	Charitable Society
2.	Besain Kindergarten	1	26	1	Private
3.	Kureise Kindergarten	2	26	3	Private

Source: ARIJ database, 2006

Kureise lacks secondary stages in its schools, therefore most students have to travel to Dura city Secondary Schools to complete their school education, which is about 3 km faraway. The educational sector in the village is suffering from the following problems:

- Far distance of Dura schools for the secondary students.
- Lack of transportation, and
- Restriction of Israeli checkpoints on the roads.

Health Status

Kureise village severely lacks health institutions; there is just one maternity & pediatric center which provides health care for mothers and children. In general there are no health services or

private physician clinics, pharmacy, ambulance or medical laboratory. In emergency cases, residents of Kureise have to travel for their health services, mainly to Dura city, around 3 km away.

Health sector in Kureise suffers from the lack of a full time physician in health clinic in the village, lack of a complete health center to provide main service in the village and the distance the village is from other services.

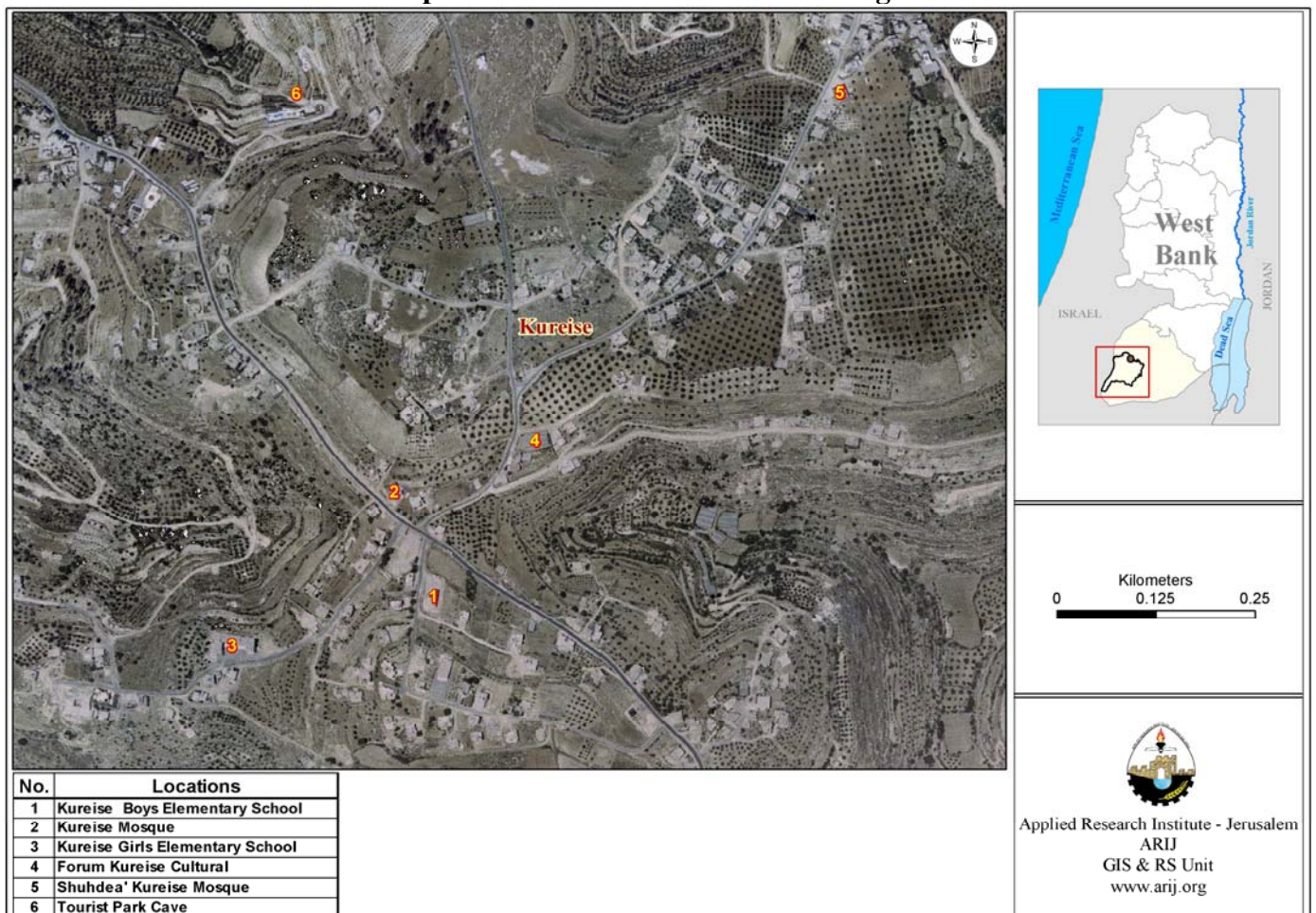
Religious and Archeological Sites

There are three Mosques in Kureise village: Kureise Mosque, Shuhdea' Kureise Mosque and Ras Wadi Al Hmam Mosque. In terms of archeological sites the village has none.

Institutions and Services

Kureise is a small rural village; the residents get their most services from Dura city. However, there is a Project Committee that was established in 2004, consisting of three members. There is only one institution in the village; Kureise cultural forum.

Map 2: Main locations in Kureise village



Infrastructure and Natural Resources

- **Telecommunication Services:** Kureise village is connected to a telecommunication network. Approximately 80% of the households have a telephone connection.
- **Water Services:** Kureise has been connected to the water network since 2006; about 30% of the households are still connected. Dura municipality is the main provider for water resources. The cisterns and water tanks are the alternative resources to water networks in the case of shortages in water.
- **Electricity Services:** Kureise has been connected to electricity network since 1980. Approximately 100% of households in the village are connected to the electricity network. Kureise Project Committee manages the distribution of electricity which is supplied by South Electricity Company.
- **Solid Waste Collection Services:** In Kureise village, there is a solid waste management system operated by the Project Committee. The solid waste management is collected by a special vehicle in cooperation with neighbouring villages (Joint Services Council) and transported from the residential areas to special dumping site (Al Deirat), where there they burn or bury it.
- **Sewage Disposal Facilities:** There is no sewage network in the village. All housing units in Kureise rely on cesspits.
- **Transportation Services:** Kureise village is in need of official transportation services, the residents mostly use their private cars or access near villages to travel outside the area. The main obstacles facing transportation of passengers in the village include:
 1. Deterioration of roads.
 2. Shortage of vehicles and transportation services

In terms of road qualities, 3 km of main roads are paved and in a good condition, 2 km of internal roads are paved and in a good condition, 3 km of internal roads are unpaved. There are about 20 km of agricultural roads that are unpaved and only suitable for agricultural use.

Agricultural Sector

Kureise village lies on a total area of 7,000 dunums. 4,050 dunums are considered arable land; however, only 2,878 dunums are cultivated.

Table 8: Land Use in Kureise Village (dunum)						
Locality	Total Area	Arable Land		Build up Area	Forests Area	Open Spaces and Rangelands
		Cultivated Area	Uncultivated Area			
Kureise	7,000	2,878.5	1,171.5	530	955	520

Source: Palestinian Ministry of Agricultural (MoA), 2006

As shown in Table 9, there are about 11.5 dunums of plastic houses in Kureise village. About 11 dunums of this area are used for growing cucumber.

Table 9: Total Irrigated protected vegetables in Kureise Village (dunum)				
Locality	Plastic Houses	High Tunnels	Low Tunnels	Total
Kureise	11.5	0	0	11.5

Table 10 shows the different types of rain-fed and irrigated open cultivated vegetables in the village of Kureise. The rain-fed fruity vegetables are the most cultivated with an area of about 104 dunums. The most common vegetables cultivated within this area are zucchini, tomato and snake cucumber (Faqous).

Table 10: Rain Fed and irrigated open cultivated vegetables in Kureise Village (dunum)												
Locality	Total fruity vegetables		Total leafy vegetable		Total green legumes		Total bulbs		Total other vegetables		Total rain fed and irrigated open vegetables	
Kureise	RF	Irr.	RF	Irr.	RF	Irr.	RF	Irr.	RF	Irr.	RF	Irr.
	104	21.5	0	39.5	5	3	0	40	22	29	131	133

RF: Rain-fed, IRR: Irrigated

There are 4 types of aromatic medical plants in the village of Kureise which spread over a total area of about 12 dunums. These plants are thyme, mint, chamomile, and sage.

Table 11: Total aromatic medicinal plants in Kureise Village			
Locality	Total aromatic medicinal plants		
Kureise	Rain-fed	Irrigated	Total
	10	2	12

In the village of Kureise, there is a total area of 1,593 dunums planted with olive trees. Other trees planted in the area are mostly stone-fruits trees such as apricot, cherry, peach, and plum trees. In addition, the village of Kureise is planted widely with almond trees and grape vines.

Table 12: Total area of horticulture and olive tree in Kureise Village														
Locality	Total area of olives		Total area of citrus		Total area of stone-fruits		Total area of pome fruits		Total area of nuts		Total area of the other fruit		Total area of horticulture and olive tree	
Kureise	RF	Irr	RF	Irr	RF	Irr	RF	Irr	RF	Irr	RF	Irr	RF	Irr
	1,593	0	0	2	109	1	21	0	92	0	411	0	2,226	3

RF: Rain-fed, IRR: Irrigated

Table 13 shows the total field crops cultivated in the village of Kureise. Cereals, in particular wheat and barley, are the most cultivated crops with an area of about 210 dunums. In addition, the cultivation of forage crops, in particular, common and bitter vetch is common in the village of Kureise.

Table 13: Total Field crops in Kureise Village

Locality	Total Cereals		Total bulbs		Dry legumes		Oil crops		Total seeds		Total forage crops		Total stimulating crops		Total other crops		Total Field crops	
	RF	Irr.	RF	Irr	RF	Irr	RF	Irr.	RF	Irr.	RF	Irr.	RF	Irr.	RF	Irr	RF	Irr
Kureise	210	0	1	0	18	0	0	0	1	0	130	0	2	0	0	0	362	0

RF: Rain-fed, IRR: Irrigated

The data also indicates that the residents of Kureise village are dependent upon rearing and keeping livestock, such as sheep, goats and chicken, in addition to about 1,066 bee hives.

Table 14: Live Stock in Kureise Village

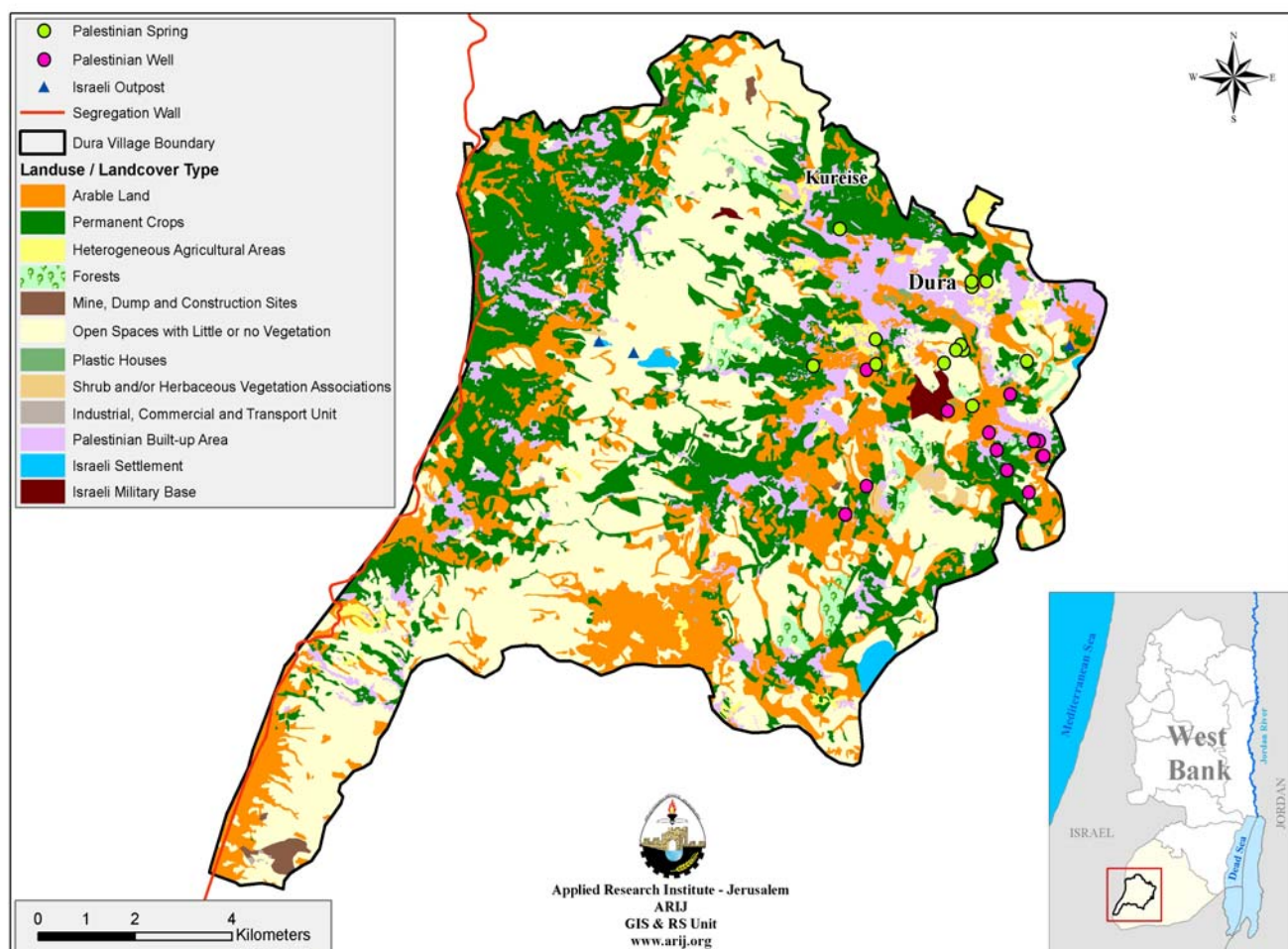
Locality	Cows*	Sheep	Goats	Camels	Horses	Donkeys	Mules	Broilers	Layers	Bee Hives
Kureise	13	300	290	5	2	20	2	84,600	36,300	1,066

*Including cows, bull calves, heifer calves and bulls

Kureise is an Agricultural village and as mentioned above it has 7,000 dunums, most of which is arable land (4,050). 20% of the residents are engaged in agriculture activities. Kureise has many Olive Tree plantations, vineyards and stone-fruits tree.

Rainfall is the main source of water for irrigation in the village, but the field survey data indicated that the farmers also depend on cisterns to irrigate their crops.

There is about 20 km of agricultural roads in Kureise suitable, but it is not suitable for general use and does not cover the vast agricultural area of the village.

Map 3: Land use/ Land cover and Segregation wall route in Kureise village.

Development Plans and Projects

Since 2004, the Project Committee of Kureise had not implemented any project in the village, due to the shortage of funds and absence of grants from donor institutions.

Locality Development Priorities and Needs

According to Kureise Project Committee the village has suffered from a shortage of many infrastructural and services needs. Table 15 shows the development priorities in the village.

Table 15: Development Priorities and Needs in Kureise

No.	Sector	Strongly Needed	Needed	Moderately Needed	Not Needed	Notes
Infrastructural Needs						
1.	Opening and Pavement of Roads	*				12 km agricultural roads

2.	Construction of New Water Networks				*	
3.	Rehabilitation of Old Water Networks				*	
4.	Construction of Water Reservoirs				*	
5.	Extending the Water Network to cover New Built up Areas	*				3 km
6.	Construction of Sewage Disposal Network	*				
	Health Needs					
1.	Building of New Clinics or Health Care Centre	*				
2.	Rehabilitation of Old Clinics or Health Care Centres				*	
3.	Purchasing of Medical Equipments and Tools				*	
	Educational Needs					
1.	Building of New Schools	*				Secondary
2.	Rehabilitation of Old Schools	*				Elementary
3.	Purchasing of New Equipments for Schools	*				
	Agriculture Needs					
1.	Rehabilitation of Agricultural lands	*				2000 dunums
2.	Building Cisterns	*				20 cisterns
3.	Construction of Barracks for Livestock	*				20
4.	Veterinary Services	*				
5.	Seeds and Hay for Animals	*				
6.	Rehabilitation of Greenhouses		*			4
7.	Field Crops Seeds				*	
8.	Plants and Agricultural Supplies		*			