

Khursa Village Profile



Prepared by



The Applied Research Institute - Jerusalem

Funded by



Spanish Cooperation



Azahar program

November 2007

Table of Content

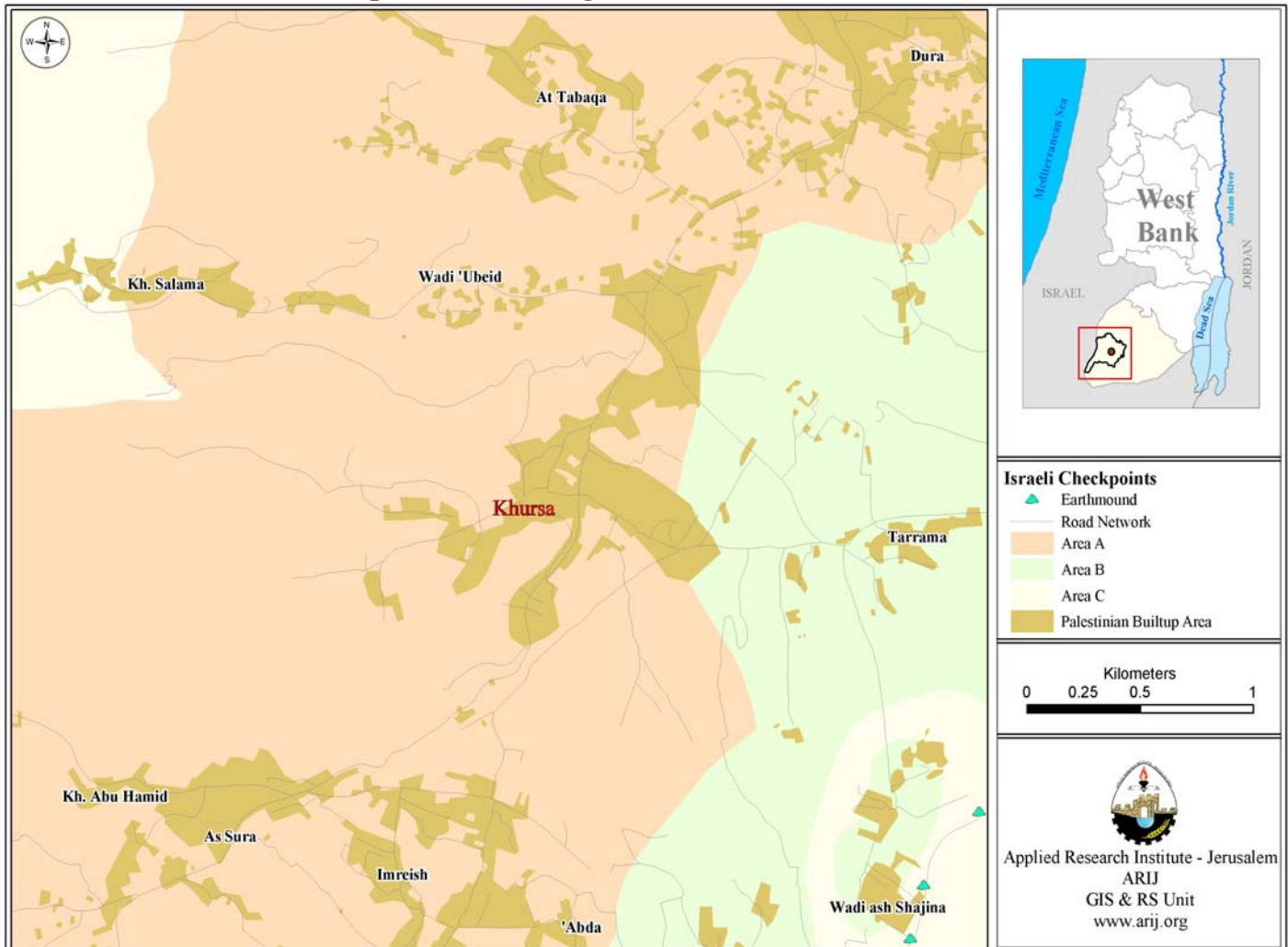
<i>Location and Physical Characteristics</i>	<u>2</u>
<i>History</i>	<u>3</u>
<i>Demography and Population</i>	<u>3</u>
<i>Economy</i>	<u>4</u>
<i>Education</i>	<u>6</u>
<i>Health Status</i>	<u>7</u>
<i>Religious and Archaeological Sites</i>	<u>8</u>
<i>Institutions and Services</i>	<u>8</u>
<i>Infrastructure and Natural Resources</i>	<u>9</u>
<i>Agricultural Sector</i>	<u>9</u>
<i>Impact of Israeli Occupation</i>	<u>11</u>
<i>Development Plans and Projects</i>	<u>12</u>
<i>Locality Development Priorities and Needs</i>	<u>12</u>

Khursa Village Profile

Location and Physical Characteristics

Khursa is a Palestinian village in Dura area which is located 20 km northwest of Hebron city in the southern part of the West Bank. It is bordered by Tarrama village to the east, Dura city to the north, As Sura and Imreish to the south and the Front Line Villages to the west.

Map 1: Khursa village location and boundaries



The total area of Khursa village is approximately 5,000 dunums. 600 dunums are classified as built-up areas, 2,650 dunums is agricultural area, 17 dunums are forests, and 1,250 dunums are uncultivated or open space.

Khursa is located on mountainous area at an elevation of 797m above sea level. The mean annual rainfall in Khursa is 436 mm, and the average annual temperature is 16 °C, whereas the average annual humidity is 61 % (ARIJ GIS).

Khursa village is a rural village. The village is governed by a village council since 1998, currently with 7 members (who were appointed by the Palestinian Authority). The council has an official building in the village. The main operations and responsibilities of the Khursa Village Council include: Social development services, pavement of roads, and projects submitted by donors.

History

Khursa village has a long history, which dates back to Roman period. The name of the village derives from a massacre that occurred in the area, where during the search of the victims of massacre, the last victim they found was a mute woman, which means in Arabic "Kharsa". Thus the village was called "Khursa". The origin of Khursa's residents came from Mesopotamia, now Iraq.

Photos of Khursa



Demography and Population

According to the first census implemented in Palestine in 1997 by Palestinian Central Bureau of Statistics (PCBS), the total population of Khursa village was 2467, of which 1236 were males and 1231 females. There were 356 households resident in 353 housing units.

Age groups and gender

The 1997 census data showed the distribution of Khursa population by age groups and sex. The data shows that 50.9% are less than 15 years old, 46.7% are in the 15-64 age group and 2.4% are 65 years old and above (See table 1).

Sex	Age				percent
	0 -14	15 -64	65 +	Total	
Male	659	547	30	1236	50.10
Female	597	605	29	1231	49.90
Total	1256	1152	59	2467	100

Source: PCBS, May 1999. Population, Housing and Establishment Census-1997, Final Results

The sex ratio in the village was 100.4 males for every 100 females. Males constitute 50.1% of the population in Khursa.

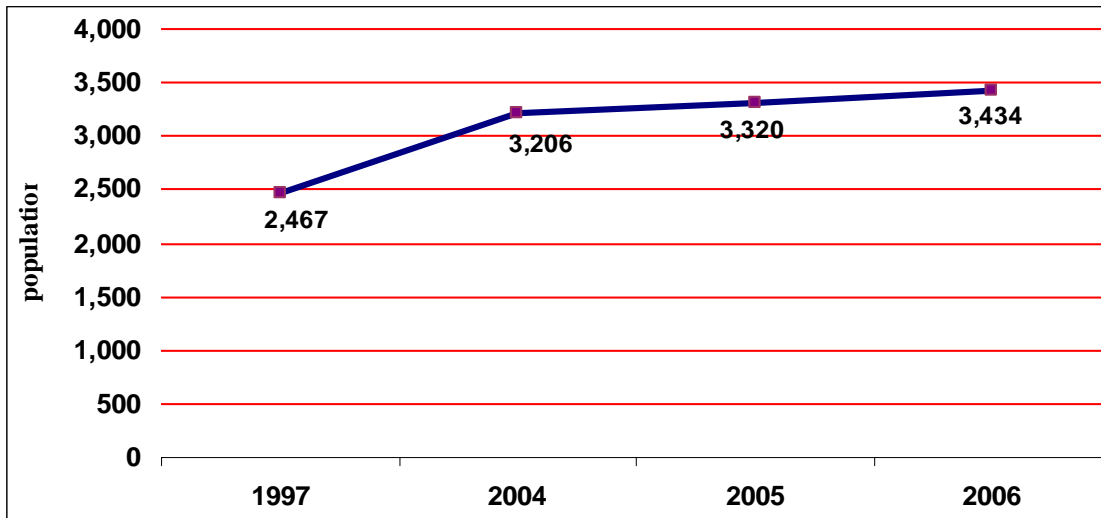
Population Growth

According to PCBS projections, the population of Khursa village increased by 39.2% since 1997 to 2006, where it reached 3,434 inhabitants in 2006. Table 2 shows the population projection in Khursa village between 2004 and 2006.

Locality name	1997 census	Mid-year population in		
		2004	2005	2006
Khursa village	2,467	3,206	3,320	3,434
% increase from 1997	-	30	34.6	39.2

Source: <http://www.pcbs.gov.ps/populati/pop10.aspx>

Figure 1: Population growth in Khursa village



Families

There are eight families in Khursa village. These are: Hanatsha (حناتشه) including Tabeesh (طبيش), Hantash (حننش) and Abu Ras (أبورأس) (20%), Hamdan (حمدان) including Alsabar (أصبار), Quteneih (قطنية) and Safi (صافي) (20%), Shahateet (شحاقيت) (20%), Masharqa (10%), Hajjah (10%), Al Awawdeh (10%), Abu Arqub (5%), Al Sous (5%).

Economy

According to a Hebron locality survey conducted by ARIJ, Khursa residents depend mainly on Israeli labor market. Approximately 50% of the workers in the village are engaged in this profession. In addition, a fundamental economic base for Khursa is in the public and private

sector (25%). The third important sector for the village residents is the agriculture sector, of which 20% of Khursa’s labor force is engaged in. The residents depend also on the services sector (3%) and the trade sector (2%). Additionally there are about 15 groceries, 2 black smiths' workshops, 2 carpentry workshops, and 3 services shops.

The survey also indicated current problems of the economic situation in the village. The data indicated that the most affected of social groups in the village as a result of Israeli restrictions during the Second Intifada were:

1. Families with six individuals and more,
2. Small farmers,
3. Employees, and
4. The pervious workers in the Israeli labor market.

Labor Force

According to the 1997 PCBS, Population, Housing and Establishment Census, there were 492 economically active persons in Khursa village, of whom 32% were employed. Of 1046 economically inactive persons in the village, 51.53% were students, 41.49% were housewives and 1.2% was unable to work, see table 3.

Table 3: Khursa Population (10 years and above) by sex and employment status

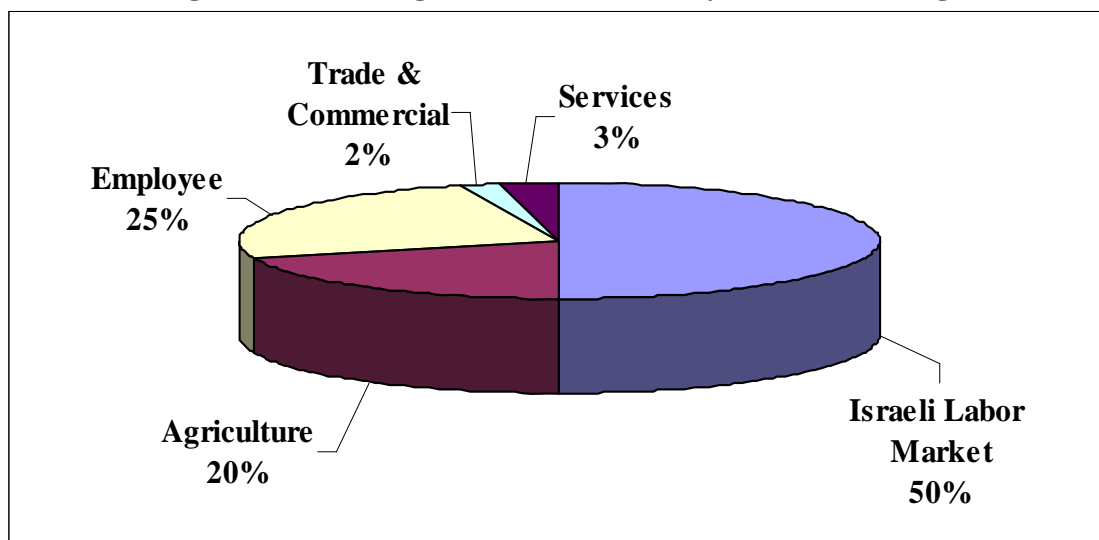
Sex	Economically Active				Not Economically Active						Total
	Employed	Currently Unemployed	Unemployed (Never Worked)	Total	Students	House-wives	Unable to work	Not working & Not looking For Work	Other	Total	
M	370	45	25	440	272	0	10	19	1	310	750
F	35	5	12	52	267	434	8	6	0	736	788
T	405	50	37	492	539	434	18	25	1	1046	1538

Source: PCBS, May 1999. Population, Housing and Establishment Census-1997, results

According to village officials’ estimates, the economic base of the village consists of the following sectors. It is indicated by percentage in the following list and figure 2:

- The Israeli Labor Market (50%)
- Employee in Governmental or private sector (25%)
- Agricultural Sector (20%)
- Services Sector (3%)
- Trade and the Commercial Sector (2%)

Figure 2: Percentage of economic activity in Khursa village



Education

According to the 1997 Population, Housing and Establishment Census, about 174 persons (10 years and over) were illiterate. Of these 70.1% were female. 15.9% of the population could read and write but received no schooling. 27.5% had completed their elementary education. 30.2% had completed their preparatory education. 8.6% had completed their secondary education and 5.4% had completed their higher education (See table 4).

Sex	Illiterate	Can read & write	Elementary	Preparatory	Secondary	Associate Diploma	Bachelor	Higher Diploma	Master	PhD	Total
M	52	128	216	215	80	29	26	0	1	0	750
F	122	116	207	249	52	17	9	0	1	0	788
T	174	244	423	464	132	46	35	0	2	0	1538

Source: PCBS, May 1999. Population, Housing and Establishment Census-1997, Final Results

The survey indicated that there are three schools in the Khursa village, of which two are secondary schools and provide the 'Tawjihi' exam in field the field of Arts. The other is an elementary school. The educational status in Khursa is mainly supervised by the governmental authority. Table 5 below shows the schools in Khursa village by stage, sex and supervising authority.

No.	Name of School	Stage	Sex	Supervising Authority
1.	Khursa Secondary Boys School	Secondary	Male	Governmental
2.	Khursa Secondary Girls School	Secondary	Female	Governmental
3.	Khursa Elementary Girls School	Elementary	Co-education	Governmental

The data of the Palestinian Ministry of Higher Education reveals that at the end of year 2006/2007 scholastic year there were 1,012 students (452 male students and 560 female students), 36 classes, and 47 teachers in Khursa schools.

Table 6: No. of schools, classes and students by sex in Khursa village (2006/2007)

		Government	Private	Total
Male	No. of Schools	1	0	1
	No. of class	14	0	14
	No. of Teachers	18	0	18
	No. of Students	380	0	380
Female	No. of Schools	1	0	1
	No. of class	10	0	10
	No. of Teachers	15	0	15
	No. of Students	311	0	311
Co-education	No. of Schools	1	0	1
	No. of class	12	0	12
	No. of Teachers	14	0	14
	No. of Students	321	0	321

Source: Ministry of Education and Higher Education –Hebron Directorate -2006/2007

As of 2007, there are two kindergartens in the village. These two kindergartens provide pre-education to about 70 children (See table 8).

Table 7: The kindergartens in Khursa by name, number of children and supervising authority.

No.	Kindergarten Name	Number of Children	Supervising Authority
1.	Al Ferdous Kindergarten	60	Charitable Society
2.	Al'A'ed ela to Palestine Kindergarten	15	Private sector

Source: ARIJ database, 2006

Students of secondary stage of science field in Khursa village are forced to travel fourteen kilometres to reach Dura schools to complete their Secondary science education. The educational sector in the village is suffering from the following problems:

- Lack of equipments and educational apparatus.
- Lack of playgrounds and recreational facilities.

Health Status

Khursa residents suffer from a severe absence of health services. The centre for Maternity & Pediatrics in Khursa village is a small center that provides only basic services to the residents. It is opened three times a week. Otherwise, there is no ambulance, or pharmacy. This, combined with the distance of medical facilities in neighbouring villages' makes medical treatment inconvenient and very difficult. Residents are forced to travel to either Dura village (4 km) or Hebron city (20 km).

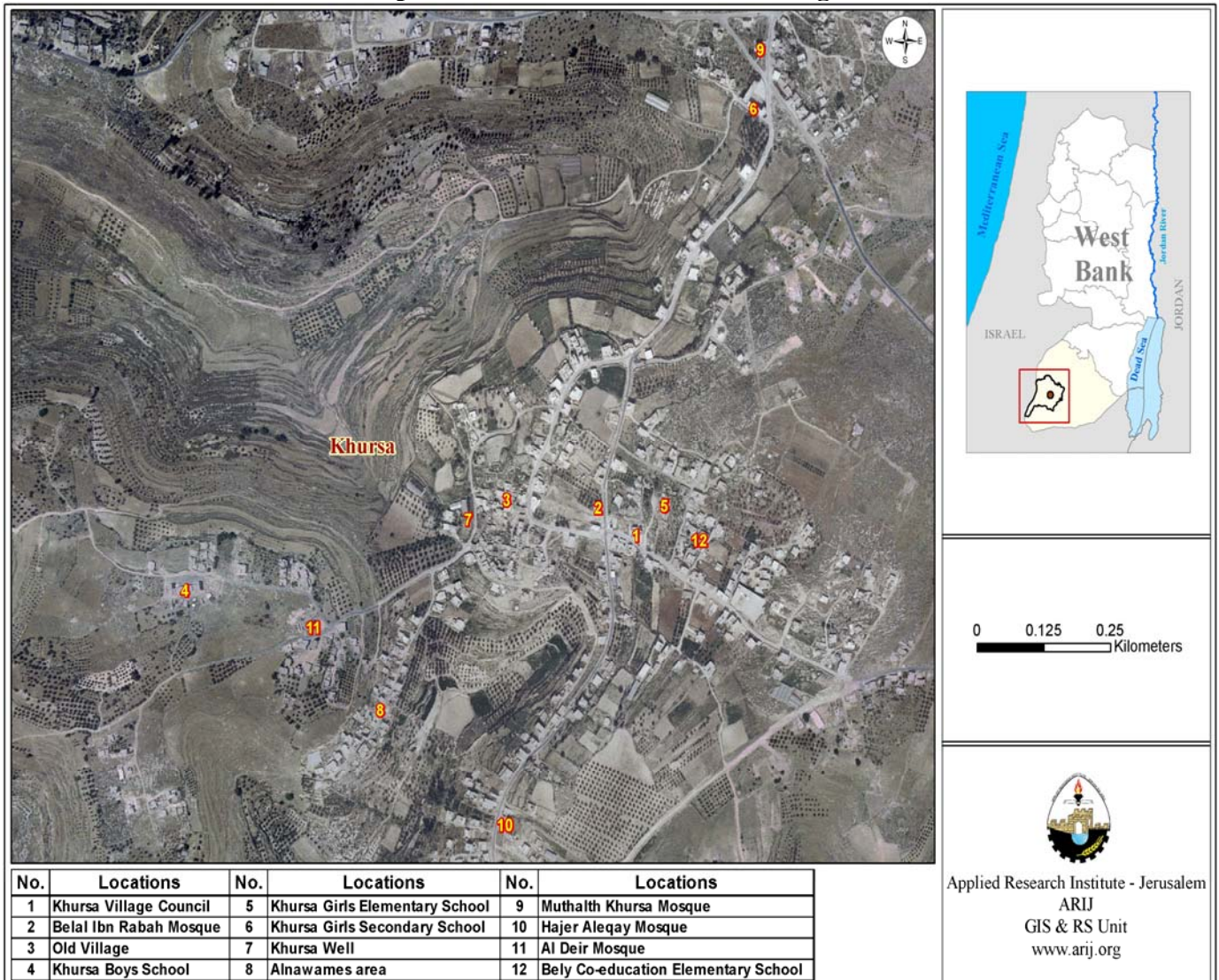
Religious and Archaeological Sites

There are four mosques serving the village; Bilal Bin Rabah Mosque, Mothalath Khursa Mosque, Hay Al Deer Mosque and Hajar Al Luqya Mosque. In terms of historical sites, there is the Khursa Well.

Institutions and Services

The main institute in the village is the village council, established in 1998. In addition, there is an Agricultural Society established in 1995 and the ‘Bent Al Reef Charitable Society’ (Branch of Dura’s Charitable Society) which provides services for women in the village and awareness courses. It was established in 1995

Map 2: Main locations in Khursa village



Infrastructure and Natural Resources

- **Telecommunication Services:** Khursa village is connected to the telecommunication network. Approximately 90% of housing units in Khursa are connected to a telephone network.
- **Water Services:** Khursa is currently not connected to a water network. Cisterns and water tanks provide alternative resources, and there is one spring in Khurse which is Khursa Well. Though this is only used for agricultural purposes. Village officials state the village has a severe water problem, as it lacks a regular supply.
- **Electricity Services:** Khursa has been connected to an electricity network since 1988. Approximately 100% of housing units in the village are connected to the electricity network. The Southern Electric Company supplies the electricity in the village. Khursa suffers from many problems with the electricity supply, these are:
 1. Old and deteriorated electricity network.
 2. Shortage of electricity regulators
 3. Weakness of electricity current in some locations
- **Solid Waste Collection:** There is no solid waste management system in Khursa. Residents dispose of solid waste in random dumping sites or by burning it.
- **Sewage Disposal Facilities:** There is no sewage network in Khursa village. All housing units in the village rely on cesspits. The cesspits are the main reason for the local spring being polluted.
- **Transportation Services:** Transportation in Khursa comprises of 1 bus and 25 informal taxis. The village has 5.5 kilometers of paved roads that are in good condition, of which 2,500m are main roads and 3,000m are internal roads. There are 4 kilometers of paved roads that are in poor condition, 18 kilometers are unpaved roads of which 2,000m are main roads, 4,000m are internal roads, and 12,000m are agricultural roads.

Agricultural Sector

Khursa village lies on a total area of 5,000 dunums. 2,650 dunums are considered arable land, however only 2,070 dunums are currently cultivated.

Table 8: Land Use in Khursa Village (dunum)						
		Arable Land				
Locality	Total Area	Uncultivated Area	Cultivated Area	Build up Area	Forests Area	Open Spaces and Rangelands
Khursa	5,000	580	2,070	600	17	1250

Source: Palestinian Ministry of Agricultural (MoA), 2006

There are about 4.5 dunums of plastic houses. About 3 dunums of this area are used for growing cucumber.

Table 9 shows the different types of rain-fed and irrigated open cultivated vegetables in the village of Khursa. The rain-fed fruity vegetables are the most cultivated with an area of about 81 dunums. The most common vegetables cultivated in this area are zucchini, tomato and snake cucumber

Table 9: Rain Fed and irrigated open cultivated vegetables in Khursa Village (dunum)

Locality	Total fruity vegetables		Total leafy vegetable		Total green legumes		Total bulbs		Total other vegetables		Total rain fed and irrigated open vegetables	
	RF	Irr.	RF	Irr.	RF	Irr.	RF	Irr.	RF	Irr.	RF	Irr.
Khursa	78	3	0	12.5	4	0	0	13	12	21	94	49.5

RF: Rain-fed, IRR: Irrigated

There are 3 types of aromatic medical plants in the village of Khursa covering a total area of about 5 dunums. These plants are thyme, mint and sage.

In the village of Khursa, there is a total area of 911 dunums of Olive Tree plantations. Other trees planted in the area are mostly almond trees, plum trees, fig trees and grape vines.

Table 10: Total area of horticulture and olive tree in Khursa Village

Locality	Total area of olives		Total area of citrus		Total area of stone-fruits		Total area of pome fruits		Total area of nuts		Total area of the other fruit		Total area of horticulture and olive tree	
	RF	Irr	RF	Irr	RF	Irr	RF	Irr	RF	Irr	RF	Irr	RF	Irr
Khursa	911	0	0	2	74	0	14	0	69	0	312	0	1380	2

RF: Rain-fed, IRR: Irrigated

Table 11 shows the total field crops cultivated in the village of Khursa. Cereals, in particular wheat and barley, are the most cultivated crops with an area of about 430 dunums. In addition, the cultivation of forage crops such as common vetch and bitter vetch is common in the village of Khursa.

Table 11: Total Field crops in Khursa Village

Locality	Total Cereals		Total bulbs		Dry legumes		Oil crops		Total seeds		Total forage crops		Total stimulating crops		Total other crops		Total Field crops	
	RF	Irr	RF	Irr	RF	Irr	RF	Irr	RF	Irr	RF	Irr	RF	Irr	RF	Irr	RF	Irr
Khursa	430	0	1	0	17	0	0	0	1	0	86	0	0	0	0	0	535	0

RF: Rain-fed, IRR: Irrigated

The data also indicates that the residents of Khursa village are also dependent upon rearing livestock (20% of total inhabitants), such as sheep, goats and chickens, in addition to about 31 bee hives.

Locality	Cows*	Sheep	Goats	Donkeys	Mules	Broilers	Layers	Bee Hives
Khursa	10	750	350	36	2	54100	7600	31

*Including cows, bull calves, heifer calves and bulls

There are about 12,000 meters of agricultural roads that are suitable for animals. This road is insufficient for all the farmers needs.

The agriculture sector in the village is suffering from the Israeli activities, lack of capital, lack of water, lack of agriculture roads and need of institutional rehabilitation.

Map 3: Land use/land cover and Segregation Wall in Khursa village



Impact of Israeli Occupation

There are no settlements or military bases constructed near the village. However, some roads were destroyed by the Israeli Occupation Force.

Development Plans and Projects

The village council in Khursa has a simple plan for the development of the village. The village council has implemented two projects in the village as shown in table 13.

No.	Project name	Type	Funded by
1.	Built Khursa Boys School	Educational	UNDP
2.	Construction of new Classes for the Girls School	Educational	PECDAR

Locality Development Priorities and Needs

According to Khursa village council the village is suffering from a shortage of many infrastructural services. Table 14 shows the development priorities in the village.

No.	Sector	Strongly Needed	Needed	Moderately Needed	Not Needed	Notes
Infrastructural Needs						
1.	Opening and Pavement of Roads	*				
2.	Construction of New Water Networks	*				
3.	Rehabilitation of Old Water Networks				*	
4.	Construction of Water Reservoirs				*	
5.	Extending the Water Network to cover New Built up Areas				*	
6.	Construction of Sewage Disposal Network				*	
Health Needs						
1.	Building of New Clinics or Health Care Centre	*				
2.	Rehabilitation of Old Clinics or Health Care Centres				*	
3.	Purchasing of Medical Equipments and Tools				*	
Educational Needs						
1.	Building of New Schools	*				Elementary
2.	Rehabilitation of Old Schools		*			Elementary
3.	Purchasing of New Equipments for Schools	*				
Agriculture Needs						
1.	Rehabilitation of Agricultural lands	*				
2.	Building Cisterns	*				
3.	Construction of Barracks for Livestock		*			
4.	Veterinary Services		*			
5.	Seeds and Hay for Animals		*			
6.	Rehabilitation of Greenhouses		*			15
7.	Field Crops Seeds	*				
8.	Plants and Agricultural Supplies	*				