

Khirbet Zanuta Profile



Prepared by



The Applied Research Institute - Jerusalem

Funded by



Spanish Cooperation



Azahar program

February 2008

Table of Contents

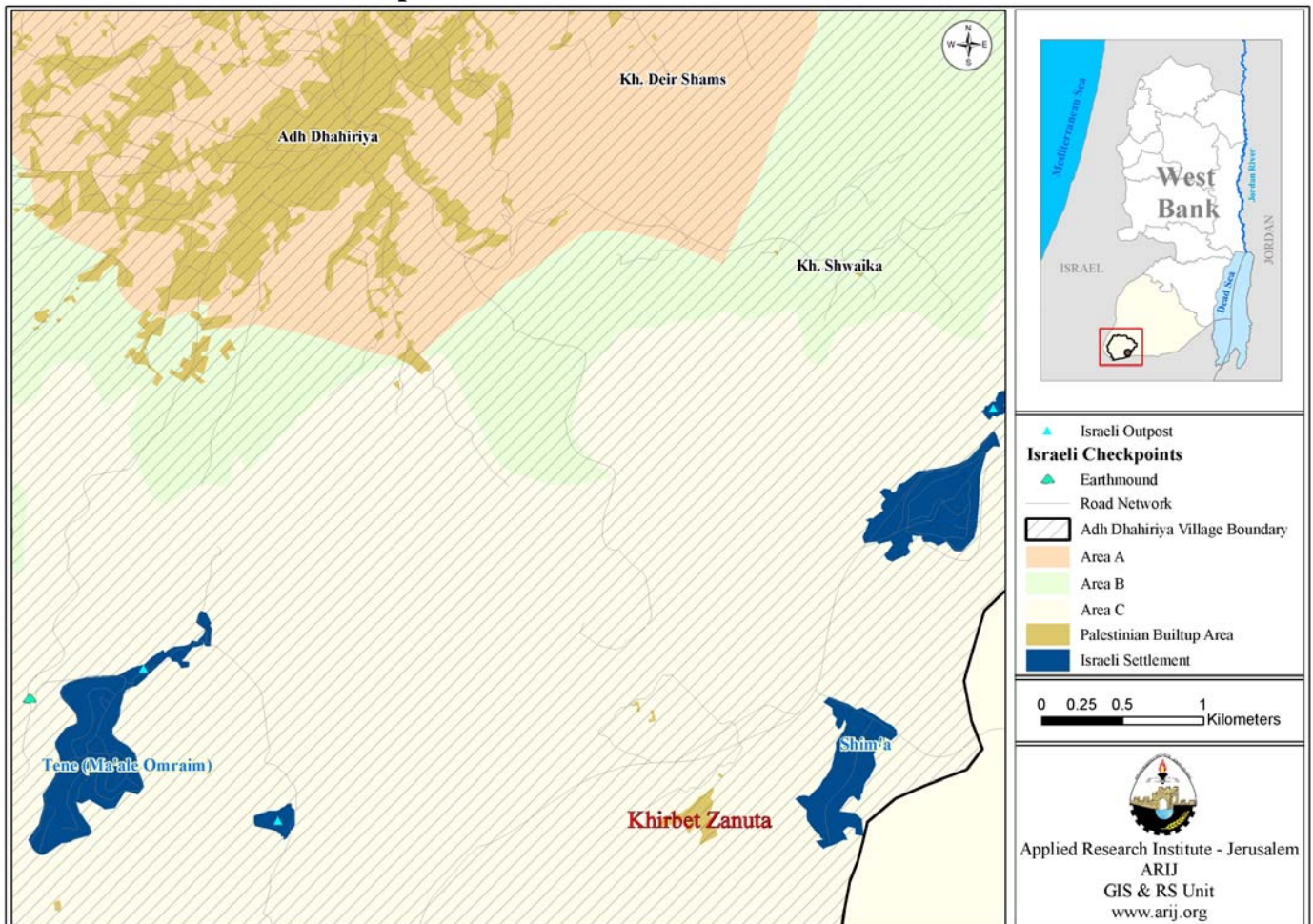
<i>Location and Physical Characteristics</i>	<u>2</u>
<i>History</i>	<u>3</u>
<i>Demography and Population</i>	<u>3</u>
<i>Economy</i>	<u>4</u>
<i>Education</i>	<u>5</u>
<i>Health Status</i>	<u>5</u>
<i>Religious and Archaeological Sites</i>	<u>6</u>
<i>Infrastructure and Natural Resources</i>	<u>6</u>
<i>Agricultural Sector</i>	<u>6</u>
<i>Impact of the Israeli Occupation</i>	<u>7</u>
<i>Development Plans and Projects</i>	<u>7</u>
<i>Locality Development Priorities and Needs</i>	<u>8</u>

Khirbet Zanuta Profile

Location and Physical Characteristics

Khirbet Zanuta is a Palestinian locality in Adh Dhahiriya area located about 20 km southwest of Hebron city in the southern West Bank. Khirbet Zanuta is bordered by As Samu' village to the east and north, Khirbet At Taeryan to the west and the Segregation Wall to the south (See Map 1).

Map 1: Khirbet Zanuta location and borders



The total area of Khirbet Zanuta estimated to be 12,000 dunums, of which one dunum is built-up area, whilst 3,000 dunums are agricultural land, and approximately 9,000 dunums are classified as open space area.

Khirbet Zanuta is located in a mountainous area at an elevation of 570 m above sea level, with a mean rainfall 337 mm, an average annual temperature of 19 °C, and average annual humidity of 59.4 % (ARIJ GIS).

Khirbet Zanuta is considered rural as it meets the criteria relevant to rural areas and it has no local authority and services.

History

Khirbet Zanuta is considered an old archaeological area and current residents are descendants from Adh Dhahiriya city.

Photos of Khirbet Zanuta



Demography and Population

According to the 1997 Palestinian Central Bureau of Statistics (PCBS) Census, the total population of Khirbet Zanuta was six inhabitants. There were five households and five housing units in the village.

Age Group and Gender

Population statistics from Khirbet Zanuta are classified by age group, the data of the 1997 census revealing that 42.9% of the population (5 people) was in the age group 15-64 and 1 person, 16.7% of the population was 65 years and older (See Table 1).

Sex	Age Group			Total	Percent (%)
	0-14	15-64	65+		
Male	-	5	1	6	100
Female	-	-	-	-	0
Total	-	5	1	6	100

Source: PCBS, May 1999. Population, Housing and Establishment Census-1997, Final Results

Population Growth

According to village officials, the total population of Khirbet Zanuta in 2007 is about 200 inhabitants.

Families

The population of Khirbet Zanuta is comprised from four main families: As Samamera (السمامرة), Al Tel (الطل), Al Batat (البطاط) and Al Qaysiyah (القيسية).

Economy

According to Hebron localities surveys conducted by ARIJ in 2007, Khirbet Zanuta residents depend mainly on agriculture for their livelihoods and all village residents are engaged in such activities. There are no industrial institutions in Khirbet Zanuta village.

Data indicates that the most affected social group in the village as a result of Israeli restrictions during the Second Intifada were small farmers.

Labor Force

According to PCPS, Population, Housing and Establishment Census-1997 results, all six people living in Khirbet Zanuta were of working age (i.e. 10 years and above) and were economically active and employed in the labor force (See Table 2).

Table 2: Khirbet Zanuta population (10 years and above) by sex and employment status-1997

Sex	Economically Active				Not Economically Active						Total
	Employed	Currently Unemployed	Unemployed (Never Worked)	Total	Students	House-wives	Unable to work	Not working & Not looking For Work	Other	Total	
M	6	-	-	6	-	-	-	-	-	-	6
F	-	-	-	-	-	-	-	-	-	-	-
T	6	-	-	6	-	-	-	-	-	-	6

Source: PCBS, May 1999. Population, Housing and Establishment Census-1997, Final Results

Education

According to (PCBS), Population, Housing and Establishment Census 1997 results, two persons are illiterate and four persons had elementary and preparatory school education. Table 3 shows educational attainment by sex in Khirbet Zanuta.

Table 3: Khirbet Zanuta population (10 years and above) by sex and educational attainment

Sex	Illiterate	Can read & write	Elementary	Preparatory	Secondary	Associate Diploma	Bachelor	Higher Diploma	Master	PhD	Total
M	2	-	1	3	-	-	-	-	-	-	6
F	-	-	-	-	-	-	-	-	-	-	-
T	2	-	1	3	-	-	-	-	-	-	6

Source: PCBS, 1999. Population, Housing and Establishment Census-1997, Final Results

Field survey data indicates that no schools exist in the village and students in Khirbet Zanuta village must travel 10 km to Adh Dhahiriya to complete their elementary and secondary education. The educational sector in the village suffers from a lack of schools and kindergartens and the high cost of transportation.

Health Status

Khirbet Zanuta village lacks health services and there are no health centers or pharmacies. In the event of an emergency, residents of Khirbet Zanuta travel to Adh Dhahiriya (10 km from the village) to access hospitals and health centers. The main obstacles facing the health sector in the village are:

- Lack of a maternity and pediatric center.
- There are no medical drugs and no clinics.
- The distance of health centres from the village.

Religious and Archaeological Sites

No mosques serving the village and the village lacks to archaeological or historical sites.

Infrastructure and Natural Resources

Telecommunication Services: Khirbet Zanuta is not connected to a telecommunication network.

Water Services: Khirbet Zanuta is not connected to water network, though villagers use cisterns and water tankers as alternative water sources. Village officials cite the lack of a water network and the shortage of water, especially during summer months, as obstacles facing the village.

Electricity Services: Khirbet Zanuta village is not connected to electricity network.

Sewage Disposal Facilities: As the village is not connected to the sewage disposal network, wastewater is disposed of in cesspits.

Solid Waste Collection Services: There are no solid waste services in the village and each family disposes of its own garbage, usually by burning.

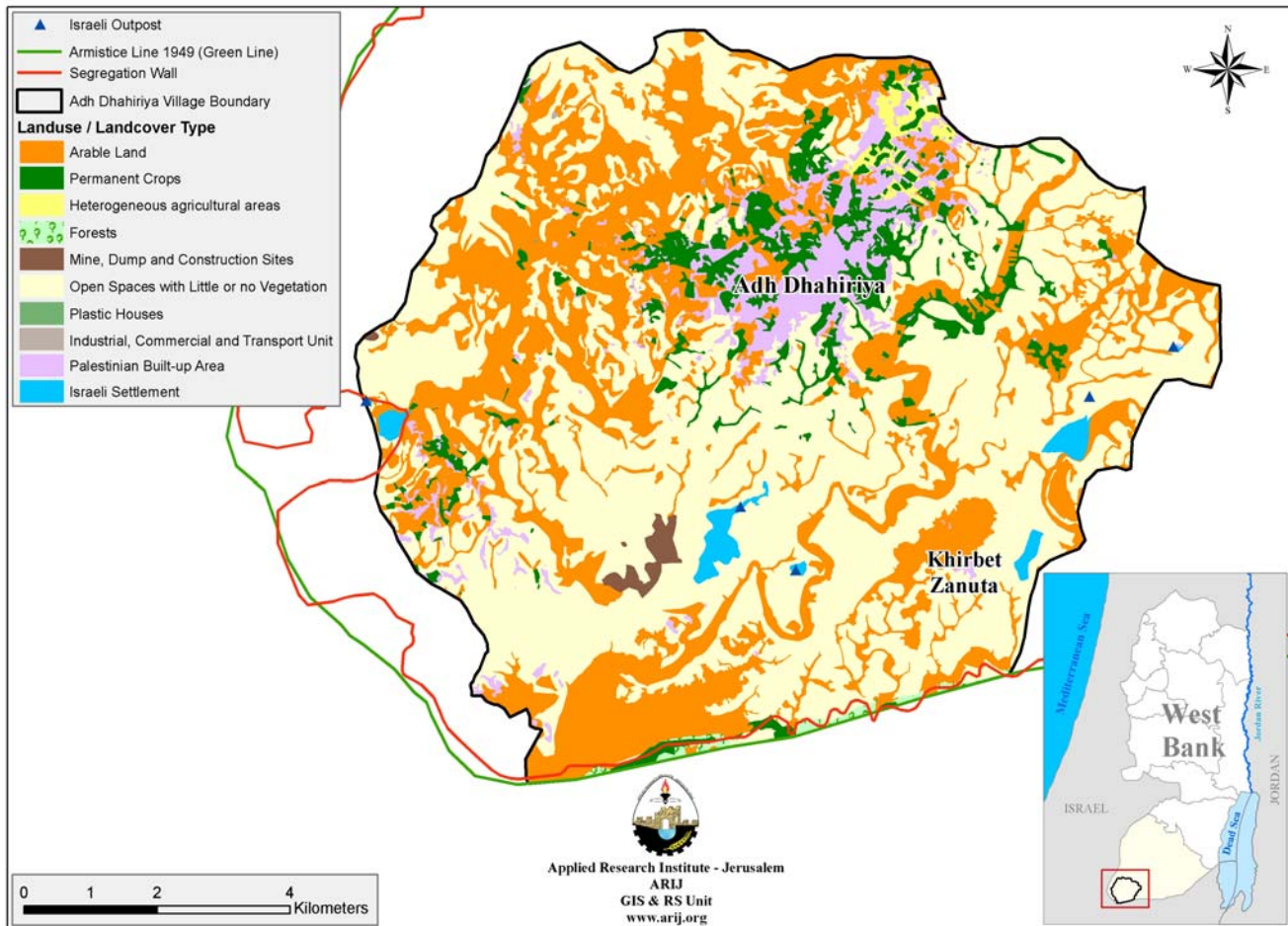
Transportation Facilities: The village has no transportation services and residents usually walk or use animals to access nearby localities. The primary obstacles to transportation in the village are the lack of vehicles and automotive services.

Agricultural Sector

Khirbet Zanuta is an agricultural village and, as mentioned above, has a large agriculture area. Of this area, about 3,000 dunums are cultivated and about 2,500 dunums uncultivated due to a shortage of capital, shortage of water and unfeasibility of the land for agriculture. All of the residents are engaged in agriculture activities. Field crops are the main crops cultivated in the area.

Data collected from Khirbet Zanuta village indicates that the village residents depend on livestock rearing and dairy production and all village households' rear and keep domestic animals. In total, there are 4,000 head of sheep and 700 head of goats. The village is directly impacted by the high price of livestock feed.

Map 2: Land use/land cover and the Israel segregation wall in Khirbet Zanuta



Impact of the Israeli Occupation

Khirbet Zanuta is adjacent to the Green Line, and has suffered considerably from the Israeli occupation, particularly as a result of the segregation wall construction. About 200 dunums of village lands were confiscated during the Second Intifada. Furthermore, Khirbet Zanuta is surrounded by the Israeli settlements of Shima and Tene to the west, and a bypass road runs through the center of the village from west to east.

Approximately six kilometers of the segregation wall have been constructed on Khirbet Zanuta land since 2004. Five cisterns have been destroyed due to the construction the wall.

Development Plans and Projects

Since 2004, the Khirbet Zanuta has implemented two development projects:

No.	Project name	Type	Funded by
1.	Construction of cisterns	Water	PHG

2.	Distribution of field crop seeds	Agriculture	British institution
----	----------------------------------	-------------	---------------------

Locality Development Priorities and Needs

Khirbet Zanuta has suffered from a shortage of many infrastructural and service needs. Table 5 below shows the development priorities and needs in the village.

Table 5: Development priorities and needs for Khirbet Zanuta						
No.	Sector	Strongly Needed	Needed	Moderately needed	Not Needed	Notes
Infrastructural Needs						
1.	Opening and Pavement of Roads	*				500 m
2.	Construction of New Water Networks	*				1 km
3.	Rehabilitation of Old Water Networks				*	
4.	Construction of Water Reservoirs	*				500 ³
5.	Extending the Water Network to cover New Built up Areas				*	
6.	Construction of Sewage Disposal Network	*				
Health Needs						
1.	Building New Clinics or Health Care Centre	*				
2.	Rehabilitation of Old Clinics or Health Care Centres				*	
3.	Purchasing Medical Equipment and Tools				*	
Educational Needs						
1.	Building New Schools	*				Elementary & Secondary
2.	Rehabilitation of Old Schools				*	
3.	Purchasing New Equipment for Schools				*	
Agriculture Needs						
1.	Rehabilitation of Agricultural lands	*				
2.	Building Cisterns	*				
3.	Construction of Barracks for Livestock	*				
4.	Veterinary Services	*				
5.	Seeds and Hay for Animals	*				
6.	Rehabilitation of Greenhouses				*	
7.	Field Crops Seeds	*				
8.	Plants and Agricultural Supplies	*				