

Kharas Village Profile



Prepared by



The Applied Research Institute - Jerusalem

Funded by



Spanish Cooperation



Azahar program

September 2006

Table of Content

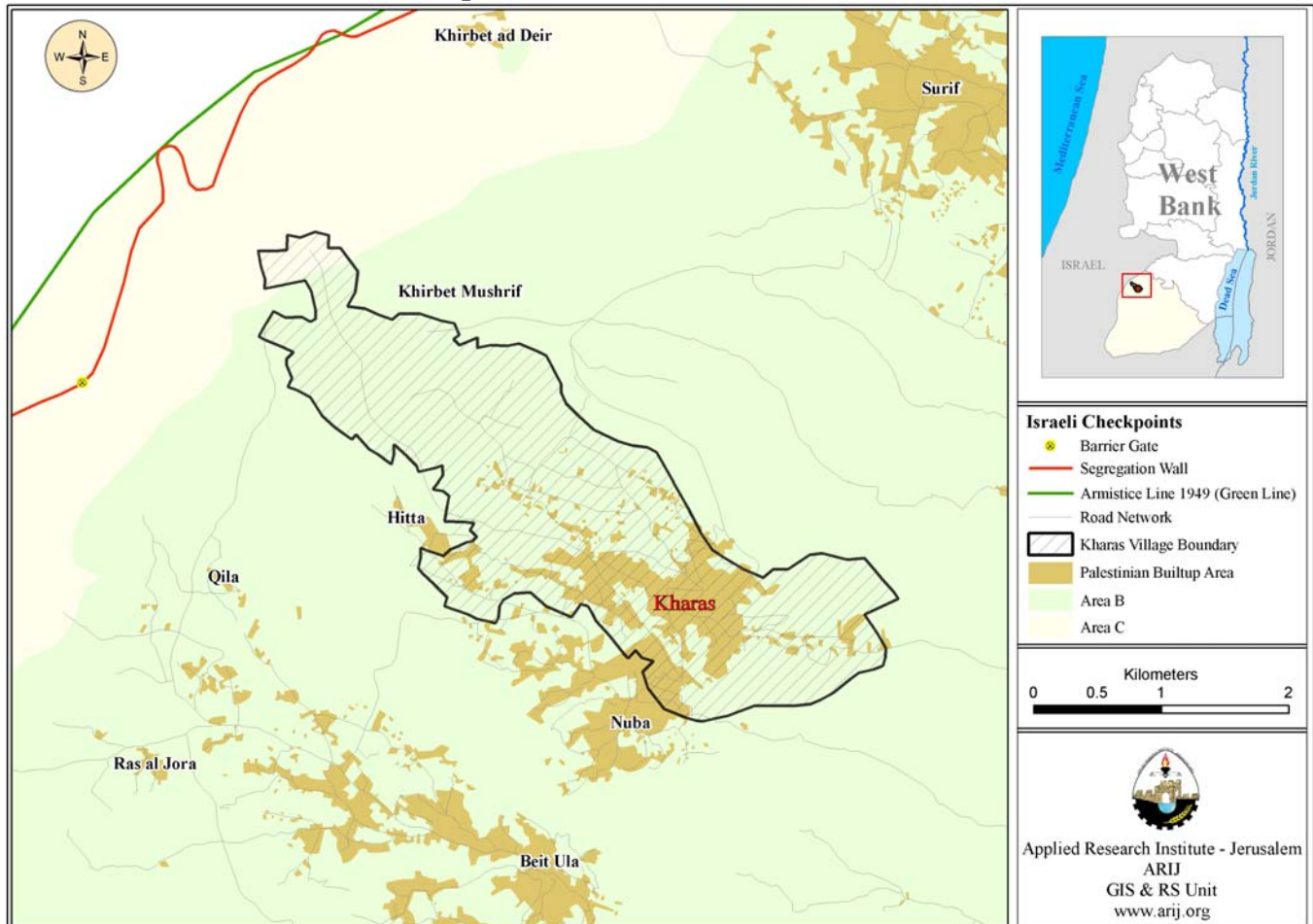
<i>Location and Physical Characteristics</i>	<i>2</i>
<i>History.....</i>	<i>2</i>
<i>Demography and Population</i>	<i>3</i>
<i>Economy</i>	<i>5</i>
<i>Education.....</i>	<i>6</i>
<i>Health Status</i>	<i>8</i>
<i>Religious and Archeological Sites</i>	<i>8</i>
<i>Institutions and Services</i>	<i>8</i>
<i>Infrastructure and Natural Resources.....</i>	<i>10</i>
<i>Agricultural Sector</i>	<i>11</i>
<i>Impact of the Israeli Occupation</i>	<i>13</i>
<i>Development Plans and Projects.....</i>	<i>13</i>
<i>Locality Development Priorities and Needs.....</i>	<i>14</i>

Kharas Village Profile

Location and Physical Characteristics

Kharas is a Palestinian village located within Hebron Governorate, 11 km north-west of Hebron City in the southern part of the West Bank. It is bordered by Halhul village to the east, Surif to the north, Nuba to the south and the Green Line to the west (See map 1).

Map 1: Kharas location and borders



Kharas village is located in the west of Hulhul mountain region, at an elevation of 523 m above sea level. The mean annual rainfall in Kharas village is 481 mm; the average annual temperature is 17 °C, and the average annual humidity is 60 % (ARIJ GIS).

Kharas village was governed by a village council, established in 1972, until 2000 when a municipal council, appointed by the Palestinian Authority, took over the responsibilities of the village council. In 2005, a new council was elected, consisting of 11 members and 15 paid employees. The municipal council operations and responsibilities include:

1. Administration, planning and development, organizing and issuing building licenses;

2. Infrastructural maintenance of water, electricity, solid waste collection, open and paved roads and the distribution of social services.

History

A village rich in water wells and olive trees, Kharas village dates back more than 250 years. According to village residents, Kharas was originally named "Deir Hrash" after an existing convent, though changed its name over time to its present name (Kharas). The original residents came from Halhul and Sire villages.

Photos of Kharas



Demography and Population

According to the first Palestinian census of 1997, the total population of Kharas village was 5,099 people, with 2,659 males and 2,440 females. Furthermore, 715 households resided in 723 housing units.

The population of Kharas village constitutes about 1.3% of the total population of the Hebron Governorate and is classified as a rural area.

Age groups and gender

The data of the 1997 census shows that 51.5% of the village population was less than 15 years of age, 45.3 % are in the 15-64 age range and 3.2 % are 65 years and above. The sex ratio in the village was 109 males for every 100 females, thus males constitute 52.1 % of the population and females constitute 47.9 % (See table 1).

Sex	Age				Percent
	0 -14	15 -64	65 +	Total	
Male	1,355	1,229	75	2,659	52.1
Female	1,273	1,083	84	2,440	47.9
Total	2,628	2,312	159	5,099	100

Source: PCBS, May 1999. Population, Housing and Establishment Census-1997, Final Results

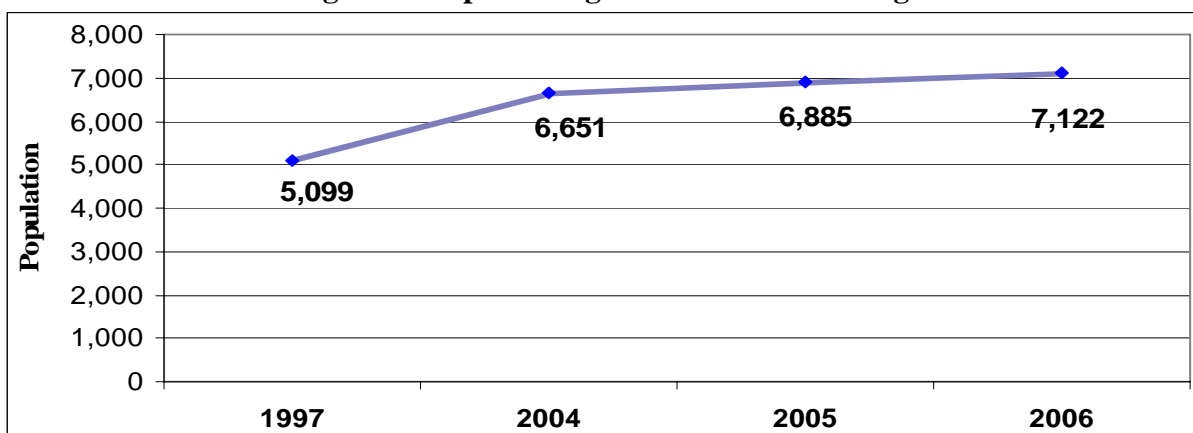
Population Growth

The Palestinian Central Bureau of Statistics estimated the population of Kharas village in mid 2006 to be 7,122 people. The data in Table 2 indicates that the population of Kharas village grew by 39.7 % between 1997 and mid 2006, an increase of 2,023 people over ten years.

	1997 Census	Mid-year population in		
		2004	2005	2006
Kharas village	5,099	6,651	6,885	7,122

Source: <http://www.pcbs.gov.ps/populati/pop10.aspx>

Figure 1: Population growth in Kharas village



Families

The population of Kharas is comprised of six main families, several smaller families, and a few refugees. The population is divided as follows: Al Hrub family (الحروب) 21%, Kdemat family (قديمات) 21.5%, Attwan family (عطوان) 17%, Halahliah family (حلالحة) 21%, Aqabneh family (عقابنة) 6%, Abu Aljarish family (أبو الجرايش) 8%; other families make up 4% of the population and refugees comprise 2%.

Economy

In spite of Kharas' fertile agriculture area, residents of Kharas have shown a preference for working in the Israeli labor market since the Israeli occupation in 1967. High wages, as well as the village's proximity to the Green Line and Israel, promotes migrant labor amongst nearly 50% of the village labor force. Thirty percent of the labor force depends on agriculture and trade activities, the second and third largest employers respectively. The main economic institutions in the village include two olive pressing plants, two stone cutting factories and one automatic backer. Traders include two clothing shops, four butchers, three blacksmiths, three carpenters, and a number of grocers and other shops. A significant proportion of Kharas residents also depend on the public and private sectors.

Based on ARIJ's November 2006 survey conducted in Hebron Governorate localities, the social groups most affected by Israeli restrictions during the second Intifada are: 1) workers previously employed on the Israeli labor market, 2) families with six individuals and more, 3) small-holder traders 4) small-holder farmers 5) housewives and children.

Labor Force

The 1997 census data showed that labor force participation constituted 61.1% of the village's total population, with 29.0% being women participants (1,478 women in total). The labor force in Kharas village is 3,113 people in total, of which 33.8% are economically active, and 90% of the economically active people are employed. The remaining 66.2% of the labor force population represent non-economically active people. The largest groups of non-economically active people are the students and housewives, who constitute 50.5% and 41.7% respectively. Table 3 shows the labor force statistics of Kharas village.

Table 3: Kharas population (10 years and above) by sex and employment status

Sex	Economically Active				Not Economically Active						Total
	Employed	Currently Unemployed	Unemployed Never Worked	Total	Students	House-wives	Unable to work	Not working & Not looking For Work	Other	Total	
M	905	83	17	1,005	558	-	56	16	-	630	1,635
F	40	3	5	48	482	859	63	18	8	1,430	1,478
T	945	86	22	1,053	1,040	859	119	34	8	2,060	3,113

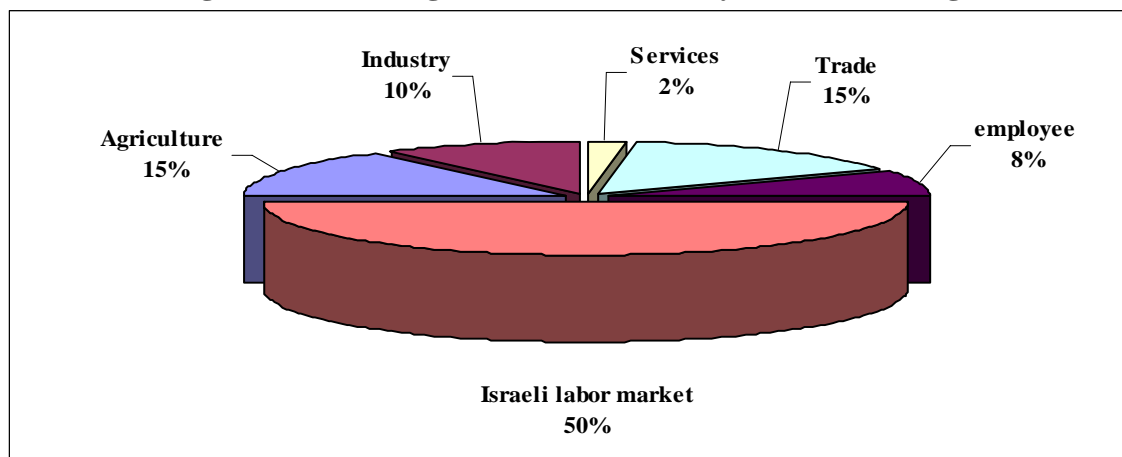
Source: PCBS, May 1999. Population, Housing and Establishment Census-1997, results

Since September 2000, the Israeli procedures against the Palestinian people have had a significant impact on Kharas' economy. Israeli imposed restrictions on residents' movements posed challenges for villagers to reach their jobs in the Israeli labor market, as well as lack of access to agricultural lands. Villagers also face difficulties harvesting crops and marketing agricultural produce. In addition, many crops and trees have been uprooted causing some residents to lose their primary source of income.

Field survey data indicated that the share of the population working in the various sectors of the economy is:

- The agriculture sector -15 %
- The service sector -10 %
- Israeli labor market -50 %
- The industrial sector -10 %
- The trade sector -15 %

Figure 2: Percentage of economic activity in Kharas village



Education

According to the 1997 Population Census, 11% of the residents were illiterate, with women representing 70.2% of this population. Of the literate population, 17.0% of residents could read and write having received no formal education, 28.5% had completed elementary education, 26.1% had completed preparatory education and 11.3% had completed secondary and higher education. Table 4 shows the 1997 education status in Kharas by sex and educational attainment.

Sex	Illiterate	Can read & write	Elementary	Preparatory	Secondary	Associate Diploma	Bachelor	Higher Diploma	Master	PhD	Total
M	101	294	468	404	220	58	76	1	11	4	1,637
F	238	231	418	410	131	31	18	-	-	-	1,477
T	339	525	886	814	351	89	94	1	11	4	3,114

Source: PCBS, May 1999. Population, Housing and Establishment Census-1997, Final Results

Field survey data indicates three levels of education in Kharas village: pre-school (kindergarten), elementary and secondary education. The data specifically identifies five schools in the village, of which three were for males and two for females. The number of schools by stage, sex and supervising authority is shown in table 5.

No.	School name	Stage	Sex	Supervising Authority
1.	Khaled Ibn Al Walled Boys Elementary School	Elementary	Male	Governmental
2.	Kharas Martyr Boys Elementary School	Elementary	Male	Governmental
3.	Kharas Girls Elementary School	Elementary	Female	Governmental
4.	Kharas Boys Secondary School	Secondary	Male	Governmental
5.	Kharas Girls Secondary School	Secondary	Female	Governmental

The data of Ministry of Higher Education (MOHE) shows that during the 2006/2007 scholastic year there were 62 classes, 83 teachers and 2,081 students in Kharas village (See table 6).

		Government	Private	Total
Male	No. of Schools	3	-	3
	No. of class	32	-	32
	No. of Teachers	43	-	43
	No. of Students	1,062	-	1,062
Female	No. of Schools	2	-	2
	No. of class	30	-	30
	No. of Teachers	40	-	40
	No. of Students	1,019	-	1,019

Source: Ministry of Higher Education –Hebron Directorate -2006/2007

As of 2006, there were two kindergartens in Kharas, both supervised by charitable societies, providing pre-school education services to 240 children. Table 7 shows the kindergartens by name, number of children and supervising authority.

No.	Kindergarten Name	Number of Classes	Number of Children	Number of Teachers	Supervising Authority
1.	Kharas Kindergarten	5	150	5	Kharas Charitable Society
2.	Al Zaytonah Kindergarten	3	90	3	Developing Rural Woman

Villagers cite the lack of transportation to and from schools, which are located far from the residential area, as the main impediment to educational services in Kharas.

Health Status

In Kharas, one governmental clinic provides health services for women and children. In addition, there are four private general physician clinics, three dental clinics and several other health institutions. Table 8 below shows the number of health institutions in Kharas village.

Institution	Governmental	Privet	Charitable	NGO
Physician Clinic	-	4	-	-
Dental Clinic	-	3	-	-
Health Clinic	-	-	-	-
X Ray Center	-	-	-	-
Medical Lab	-	1	-	-
Maternity & Pediatric Center	1			-
Pharmacy	-	3	-	-
Other	-	-	-	-
Total	1	11	0	0

When health services are unavailable in the village or in the case of emergencies, residents of Kharas travel to neighboring villages including Halhul, or Hebron City.

Obstacles and problems facing the health sector in Kharas include:

1. Shortage of modern health centre facilities; and
2. Lack of an ambulance.

Religious and Archeological Sites

There are four mosques in the village: Khaled Ibn Al Waleed Mosque, Omar Bin Al Khatab Mosque, Abu Baker Mosque and Al Sahabeh Mosque.

A few historical and archeological sites in the village exist, including Khirbet Al Mosharaf, Khirbet Loqea and Wad Al Shekh well.

Institutions and Services

Kharas village has no national institutions; residents receive most services from Hebron City or the neighboring villages. Kharas has five societies, as well as other institutions including:

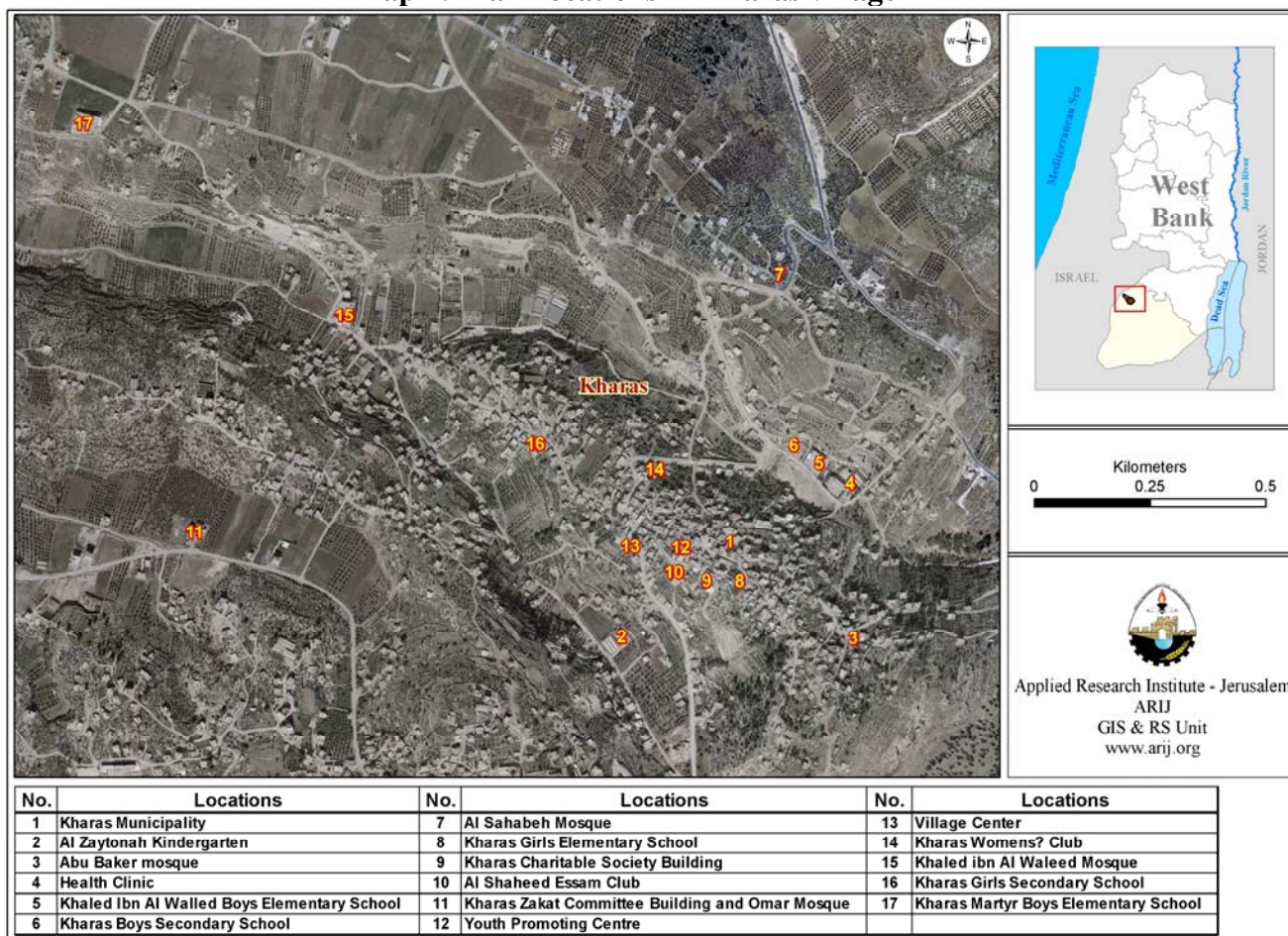
1. Kharas Municipality, established 2000. With a new council elected in 2005 consisting of eleven members, the municipality provides public services to the residents such as water, electricity, license issuance, solid waste management, etc.

2. The Kharas Charitable Society, established in 1974, has a board with six members. Based out of a building located in the centre of Kharas, the society has a kindergarten providing educational and cultural training, as well as health activities.
3. Kharas Society for co-operation and consumption, established in 2004, consists of 50 members. Its objective is to provide consumption needs to members as well as residents and to support other activities in the village.
4. Kharas Women's Club (KWC), established in 1990, has more than 450 members, most who work within the developmental sector. KWC is increasingly participating in rural women's development activities by providing vocational training courses and implementing small income generating initiatives, as well as hosting social activities. The club has a board of six female members.
5. The Youth Promoting Centre, established in 2002, has 18 members. The centre has implemented many activities in the village for youths including first aid instruction, computer and academic courses.
6. Kharas 'Zakat' and Charity Committee, established in 1995, provides assistance to needy households, orphans and needy students.
7. The Agricultural Union was established in 2001 with 10 members. Today the union has more than 200 farmers as members, with a range of activities implemented by the union including opening agricultural roads, cisterns construction and extension. The union provides some services to its members including government insurance, private insurance and health cards.
8. Kharas Young Women's Centre, established in 2005, is an NGO funded by UNIFIM. It provides services to women, including education, raising awareness of women's rights, encouraging the role of women socially and economically, and encouraging woman for leadership roles.
9. Kharas Sport Club.

Table 9 shows the number of institutions in Kharas by type:

Table 9: No of institutions in Kharas by type							
	Type of institution						
	Gov.	Charitable	Women	NGO	Agriculture	Sports	Worship
Kharas	2	2	2	0	1	1	4

Map 2: Main locations in Kharas village



Infrastructure and Natural Resources

- **Telecommunication Services:** Approximately 50% of Kharas village households are connected to the telecommunications network.
- **Water Services:** Kharas connected to the water network in 1973 and nearly 98% of housing units are currently connected. The Palestinian Water Authority is the primary provider of water in the village. Water tanks and cisterns provide an alternative resource to the water network. In addition, a water reservoir exists in Kharas with a capacity of 1000 m³ used mainly during the summer season. Potential domestic water supply per capita is 47 (L/day). However, during summer, potential water supply falls considerably.
- **Electricity Services:** Kharas has been connected to the electricity network since 1998. Approximately 95% of housing units in the village are connected to the network. Kharas municipality manages the supply of electricity, which is provided by the Israeli Electric Cooperation.

- **Solid Waste Collection:** Solid waste management in Kharas is managed by the Kharas municipality in cooperation with Joint Services Council for Planning and Development-North West Hebron. According to field survey data, 18 cubic meters of solid waste is produced in the village, which is collected and sent to a dumping site 3-4 km away, which is operated by the Joint Services Council. Burning and dumping are the main methods used to dispose of solid waste.
- **Sewage Disposal Facilities:** Kharas village had been partially connected to the sewage network since 2003, covering an estimated 50% of the village. The remainder of the village disposes of wastewater in cesspits. This is considered one of the main sources of pollution to local groundwater. The annual volume of wastewater production in the village is estimated at 0.052 MCM/yr.
- **Transportation Services:** There are approximately 33,207 m of roads in Kharas, 21,200 m of which are surfaced and in good condition, 5,500 m are surfaced yet not in good condition and 6,507 m are completely unsurfaced. Transportation in Kharas is compromised of four buses and ten informal taxis. Village transportation suffers from a general shortage of vehicles and services.

Agricultural Sector

According to the Palestinian Ministry of Agricultural, Kharas village lies on a total area of 6,800 dunums. 5,500 dunums are considered arable land; however, only 4,242 dunums are cultivated.

Locality	Total Area	Arable Land		Build up Area	Forests Area	Open Spaces and Rangelands
		Uncultivated Area	Cultivated Area			
Kharas	6,800	1,258	4,242	800	200	300

Source: Palestinian Ministry of Agricultural (MoA), 2006

There are about 15 greenhouses with a total area equal 10 dunums, but no tunnels in Kharas village. Five dunums of this area are used for growing tomatoes and five for planting summer cucumber.

Table 11 shows the different types of rain-fed and irrigated open cultivated vegetables in the village of Kharas. The rain-fed fruity vegetables are the most cultivated covering an area of about 119 dunums. The most common vegetables cultivated within this area are okra, squash, snake cucumber and cauliflower.

Locality	Total fruity vegetables		Total leafy vegetable		Total green legumes		Total bulbs		Total other vegetables		Total rain fed and irrigated open vegetables	
	RF	Irr	RF	Irr	RF	Irr	RF	Irr	RF	Irr	RF	Irr
Kharas	119	17	3	15	15	1	0	6	0	20	137	59

RF: Rain-fed, IRR: Irrigated

There are two types of aromatic medical plants in the village of Kharas, thyme and sage, which spread over a total area of about four dunums.

In the village of Kharas, there is a total area of 3,533 dunums planted with olive trees. Other trees planted in the area include almond trees, plum trees, fig trees nut trees and grape vines.

Locality	Total area of olives		Total area of stone-fruits		Total area of pome fruits		Total area of nuts		Total area of the other fruit		Total area of horticulture and olive tree	
	RF	Irr	RF	Irr	RF	Irr	RF	Irr	RF	Irr	RF	Irr
Kharas	3,353	0	40	0	1	0	86	0	108	0	3,588	0

RF: Rain-fed, IRR: Irrigated

Table 13 shows the total field crops cultivated in the village of Kharas. Cereals, in particular wheat and barley, are the most cultivated crops covering an area of about 505 dunums. In addition, the cultivation of dry legumes such as chick-peas, lentils and broad bean is common in the village of Kharas. 17 dunums of land was cultivated with forage crops such as vetch and sern.

Locality	Total Cereals		Total bulbs		Dry legumes		Total forage crops		Total stimulating crops		Total Field crops	
	RF	Irr	RF	Irr	RF	Irr	RF	Irr	RF	Irr	RF	Irr
Kharas	505	0	11	0	50	0	17	0	5	0	588	0

RF: Rain-fed, IRR: Irrigated

The survey data conducted by ARIJ indicated that about 40% of Kharas residents are also dependent upon rearing and keeping livestock, such as cows, sheep, goats and chicken, in addition to 123 bee hives.

Locality	Cows*	Sheep	Goats	Horses	Donkeys	Mules	Broilers	Layers	Bee Hives
Kharas	104	800	600	5	20	5	70,000	1,000	123

*Including cows, bull calves, heifer calves and bulls

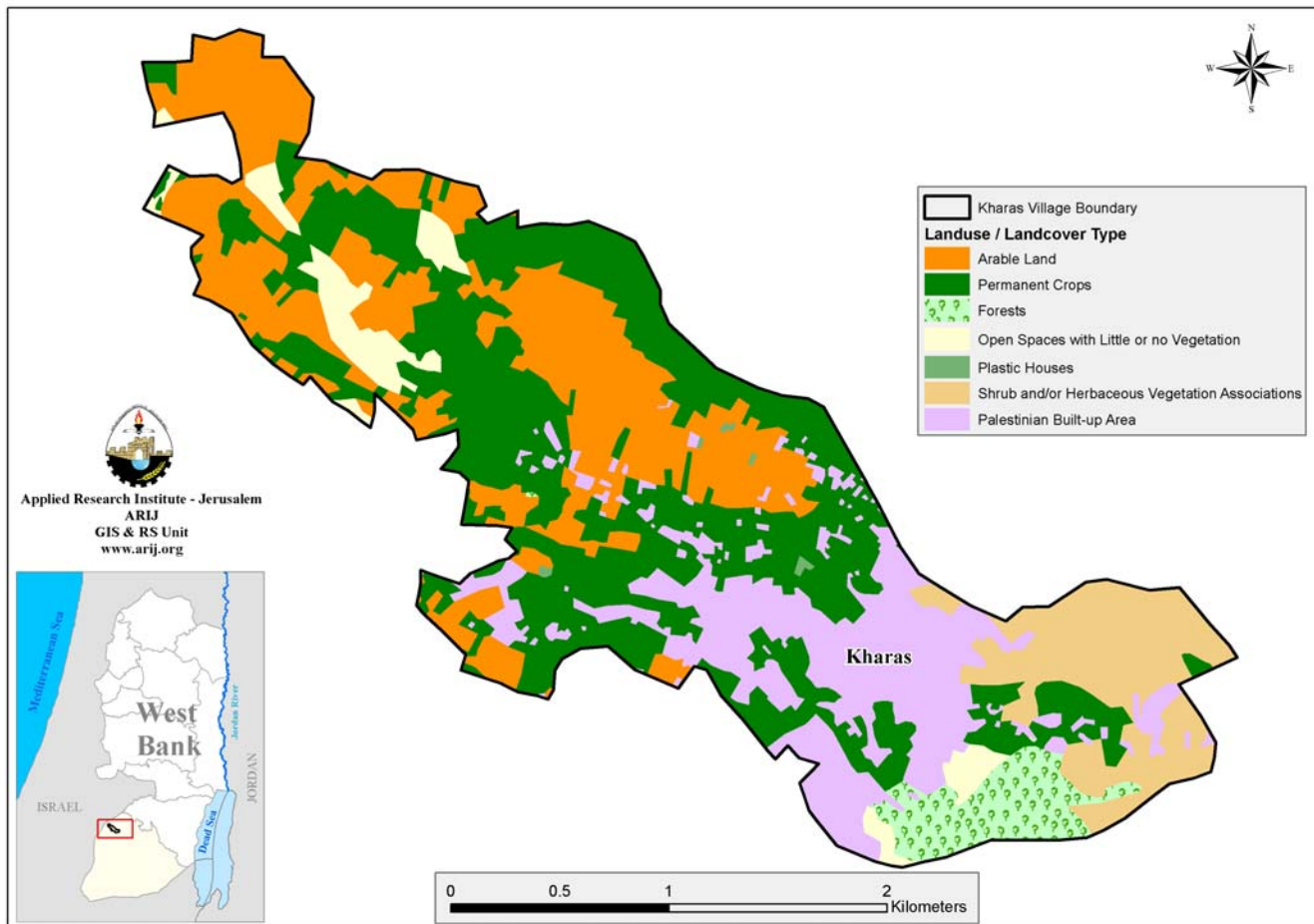
There are approximately 10 km of agricultural roads in the village providing farmers access to their lands and crops. Some of these roads are suitable for driving vehicles and others only for driving agricultural machines

Farmers of Kharas village participate in local agricultural societies and unions that provide agricultural assistance, which include the Charitable Society, the Agricultural Union and the Women’s Club.

Israeli procedures are the main problem facing the village’s agricultural sector. Estimates show that 2,000 dunums of village land has been confiscated, of which 1,000 dunums have been allocated for the construction of the segregation wall. In addition, many fruit trees have been destroyed since 2000 (see Impact of the Israeli Occupation below).

The second problem facing the agricultural sector is the extension of built up areas infringing on arable lands. In addition, a general shortage of grazing area for livestock is a threat not only to a sustainable livestock economy but also to overgrazing of existing pasturelands.

Map 3: Land use/ land cover in Kharas village



Impact of the Israeli Occupation

Kharas village had already lost part of its land as a result of the 1948 Arab-Israeli war. Since the beginning of the second Intifada, approximately 2,000 dunums of the village’s land has been confiscated; 1,000 dunums of these confiscated lands have been allotted for the construction of the segregation wall, which will pass through the western part of the village. The Israeli authorities began construction of the wire and concrete wall near Kharas in 2005, with 2 km

currently completed. Upon completion, an additional 600 dunums of land will be isolated behind the wall, thus making it arduous for farmers to access these lands. Local construction of the wall is responsible for uprooting more than 2,000 trees including 1,000 olive trees, 300 grape vines, 500 fruit trees and 200 other forest trees.

The Israeli forces also destroyed one housing unit and more than three cisterns for construction of the segregation wall.

Development Plans and Projects

In light of Kharas's largely agricultural character, the municipality implemented a project to rehabilitate its agricultural land funded by the Palestinian Agricultural Relief Committee and the Ministry of Agriculture.

The municipality of Kharas has implemented many projects in the village with an objective to develop the village infrastructure and increase services available to residents. Since 2004, more than twelve projects have been implemented in the village. These include:

No.	Project name	Type	Funded by
1.	Rehabilitation of open and surfaced Roads	Infrastructure	USAID, Arabic Fund, PASIA and Kharas Municipality
2.	Build water reservoir and construction of water networks.	Infrastructure (Water)	Palestinian Water Authority
3.	Construction of internal electricity network	Infrastructure (Electricity)	Local Community and Kharas Municipality
4.	Construction of sewage network (1 km)	Infrastructure	PHG
5.	Preparation and outfit Kharas Health Centre	Health	Italy and Turkish Governments
6.	Preparation of Kharas Stadium	Infrastructure (Sport)	Municipality and Ministry of Finance
7.	Automatic Backer	Investment	YMCA
8.	Outfit Kharas Municipality General Library		

Locality Development Priorities and Needs

Kharas Municipality has prepared a study for the developmental priorities and needs in the village, shown below in Table 12. The strategic plan for Kharas municipality is to implement numerous village infrastructure and service development projects involving, among others, projects for water, schools and roads. The shortage of funds and irregular budgetary resources are the main obstacles for implementing this plan.

Table 16: Development priorities and needs in Kharas						
No.	Sector	Strongly Needed	Needed	Moderately Needed	Not Needed	Notes
Infrastructural Needs						
1.	Opening and Pavement of Roads	*				7000 m internal
2.	Construction of New Water Networks				*	
3.	Rehabilitation of Old Water Networks				*	
4.	Construction of Water Reservoirs				*	
5.	Extending the Water Network to cover New Built up Areas				*	
6.	Construction of Sewage Disposal Network		*			
Health Needs						
1.	Building of New Clinics or Health Care Centre	*				
2.	Rehabilitation of Old Clinics or Health Care Centres		*			
3.	Purchasing of Medical Equipments and Tools		*			
Educational Needs						
1.	Building of New Schools	*				Elementary
2.	Rehabilitation of Old Schools			*		
3.	Purchasing of New Equipments for Schools			*		
Agriculture Needs						
1.	Rehabilitation of Agricultural lands			*		200 dunum
2.	Building Cisterns			*		50 cistern
3.	Construction of Barracks for Livestock			*		20 unit
4.	Veterinary Services			*		
5.	Seeds and Hay for Animals			*		
6.	Rehabilitation of Greenhouses			*		15 unit
7.	Field Crops Seeds			*		
8.	Plants and Agricultural Supplies			*		