

# At Tabaqa Village Profile



Prepared by



The Applied Research Institute - Jerusalem

Funded by



Spanish Cooperation



Azahar program

November 2007

## *Table of Content*

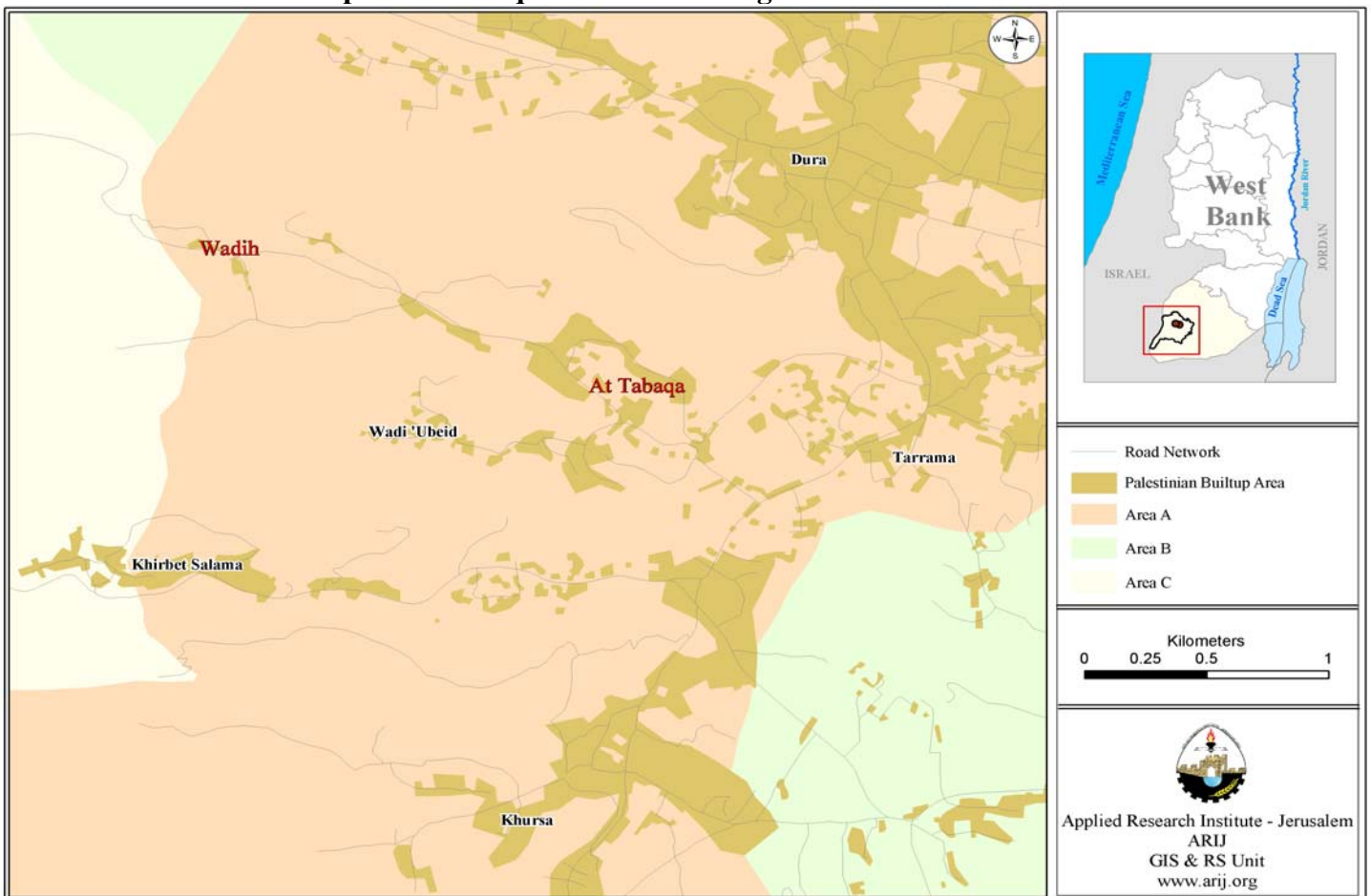
<i>Location and Physical Characteristics</i>	<u>2</u>
<i>History</i>	<u>3</u>
<i>Demography and Population</i>	<u>3</u>
<i>Economy</i>	<u>5</u>
<i>Education</i>	<u>6</u>
<i>Health Status</i>	<u>7</u>
<i>Religious and Archaeological Sites</i>	<u>7</u>
<i>Institutions and Services</i>	<u>8</u>
<i>Infrastructure and Natural Resources</i>	<u>8</u>
<i>Agricultural Sector</i>	<u>9</u>
<i>Development Plans and Projects</i>	<u>12</u>
<i>Locality Development Priorities and Needs</i>	<u>12</u>

## *At Tabaqa Village Profile*

### Location and Physical Characteristics

At Tabaqa and Wadih are Palestinian villages located in Dura area in the west of the Hebron Governorate. It is located 13 km southwest of Hebron city, in the south of the West Bank. The village is bordered by Dura to the east and north, Beit 'Awwa and Deir Samit to the west, and 'Khursa and 'Adh Dhahiriya to the south.

**Map 1: At Tabaqa and Wadih villages' location and borders**



The total area of At Tabaqa and Wadih village is 4,000 dunums, of which 350 dunums are classified as 'built up' areas, 1,890 dunums are designated agricultural land, 1,100 dunums are open space and 200 dunums are forest area.

At Tabaqa and Wadih villages are located in the mountains. The village is at an elevation of 879 m above sea level, with a mean rainfall 436 mm, an average annual temperature of 15.7 °C, and average annual humidity at 60.6 % (ARIJ GIS).

According to the Palestinian Ministry of Local Government (MOLG); At Tabaqa village comprises of At Tabaqa, Wadih, and Khallet al 'Sheikh.

At Tabaqa is considered a rural area. The village is governed by village council. Founded in 1998, the council consists of five members and one full time employee. It was founded to offer services to the entire village including road and street construction and maintenance, electricity, and water.

**History**

The history of At Tabaqa and its villages dates back to the 1940s. Most of the village’s population were migrants from other villages destroyed by the Israeli Forces in 1948 war. It is believed that the name of the village is derived from stairs that are found in the village, others believe that the village is so called because of its location near to the Green line. Most of the population of the villages came from other 1948 villages after the Israeli occupation of Palestine.

**Photos of At Tabaqa**



**Demography and Population**

According to the first Palestinian Central Bureau of statistics (PCBS) census of 1997, the total population of At Tabaqa villages was 1080 people, of which 1032 were in At Abaqa and 48 in Wadih. 546 of the population were males and 534 were females. There were 167 households resident in 207 housing units.

<b>Table 1: At Tabaqa population by locality and sex</b>			
<b>Village</b>	<b>Male</b>	<b>Female</b>	<b>Total</b>
At Tabaqa	524	508	1032
Wadih	22	26	48
<b>Total</b>	<b>546</b>	<b>534</b>	<b>1080</b>

Source: PCBS, May 1999. Population, Housing and Establishment Census-1997, Final Results

**Age groups and gender**

Table 2 below shows the population of At Tabaqa villages, as classified by sex and age group. 1997 census data recorded 46.2% of the population to be less than 15 years of age, 49.5% were between 15-64 and 4.26% aged 65 and over (See table 2)

The sex ratio in the village was 102 males for every 100 females. Males constitute 50.6% of the population and females constitute 49.4%.

Sex	Age				Percent
	0 -14	15 -64	65 +	Total	
Male	256	267	23	546	50.56
Female	243	268	23	534	49.44
<b>Total</b>	<b>499</b>	<b>535</b>	<b>46</b>	<b>1080</b>	<b>100</b>

Source: PCBS, May 1999. Population, Housing and Establishment Census-1997, Final Results

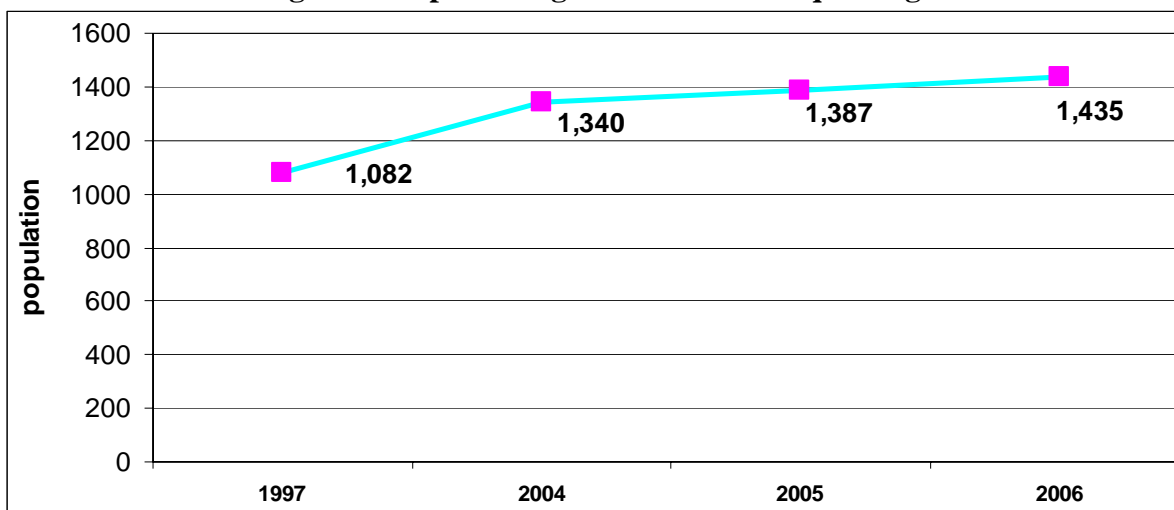
**Population Growth**

The Palestinian Central Bureau of Statistics estimated the population of At Tabaqa villages to be 1,435 people by mid 2006. The data in table 3 indicates that the population of At Tabaqa village grew by 32.6 % between 1997 and mid 2006, an increase of 353 people over nine years.

	1997 Census	Mid-year population in		
		2004	2005	2006
<b>At Tabaqa village</b>	1,082	1,340	1,387	1,435

Source: <http://www.pcbs.gov.ps/populati/pop10.aspx>

**Figure 1: Population growth in At Tabaqa village**



**Families**

The population of At Tabaqa is comprised of the following main families: Abu Atwan (أبو عطوان) and Al Atrash (الأطرش) (35%), Hamdan (حمدان) (25%), Aharibat (20%), Al Darabi (7%). Other families (such as the Omro (عمرو) Family, Abu Sharar (أبو شرار) Family, and Mohamed (محمد) Family) make up the remaining 13% of the village population

### Economy

Since Israeli occupation of the West Bank in 1967, the residents of At Tabaqa were largely dependent on the Israeli labour market, especially given Israel's higher wages. Until recently, about 60% of the At Tabaqa labour force worked in the Israeli labour market. Though, At Tabaqa agriculture sector has been limited as a result of many compounding factors, given the village's rural location and the general Palestinian economic stagnancy the agricultural sector has proved to be an important source for providing jobs and village food security. The economy of At Tabaqa does however still depend on employment in the public and private sector. As the majority of the labour force is dependent on the Israeli labour market, with the influx of Israeli closures and the imposed entry permits system, the village economy, and ultimately the quality of life in the village has suffered significantly.

Based on the 2007 survey conducted by ARIJ in Hebron Governorate localities, the village social groups most affected by Israeli restrictions during the second Intifada were: 1) housewives and children, 2) small-scale farmers, , and 3) families maintaining 6 or more individuals.

### Labor Force

The 1997 census data showed that about 64.0% of the population in At Tabaqa was of a working age (aged 10 and above). Of 691 working age residents, only 269 (39.0 %) were economically active, (i.e. in the potential labors force). 422 (61.0 %) were economically inactive, i.e. outside the labor force). All of the economically active were male. 86.0 % of the economically active were currently employed. The largest groups of economically inactive included housewives, and students constituting 50.2% and 41.7% of the population, respectively. Table 4 shows the labor force status in At Tabaqa village.

Sex	Economically Active				Not Economically Active						Total
	Employed	Currently Unemployed	Unemployed (Never Worked)	Total	Students	House-wives	Unable to work	Not working & Not looking For Work	Other	Total	
M	199	16	16	231	95	-	21	3	-	119	350
F	30	7	1	38	81	212	9	1	-	303	341
<b>T</b>	<b>229</b>	<b>23</b>	<b>17</b>	<b>269</b>	<b>176</b>	<b>212</b>	<b>30</b>	<b>4</b>	<b>-</b>	<b>422</b>	<b>691</b>

Source: PCBS, May 1999. Population, Housing and Establishment Census-1997, results

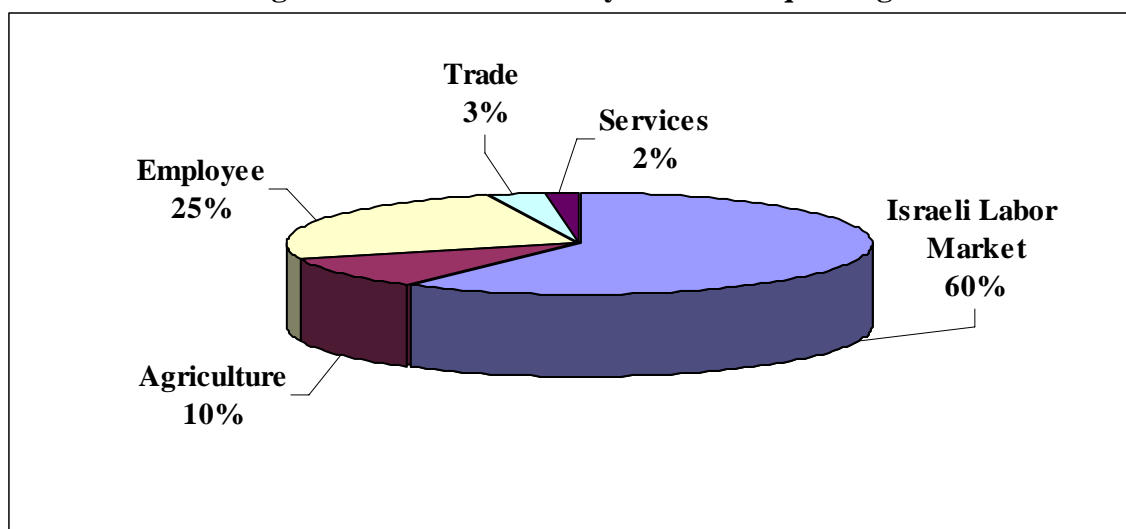
Following the outbreak of the second Intifada in September 2000, Israeli procedures against the Palestinian people have affected the economy of At Tabaqa. Israeli forces imposed restrictions on residents' movements including the impediment of farmers marketing their produce. In addition,

large areas of farmland have been destroyed, with crops and trees also being uprooted. As a result, many residents have lost their primary source of income.

The survey indicated that the distribution of the population working in the various sectors of the economy is as follows:

- Agricultural sector 10 %,
- Trade sector 3%,
- Service sector 2 %,
- Israeli labor market 60%,
- Employee sector 25%.

**Figure 2: Economic activity in At Tabaqa village**



### Education

The 1997 census indicated that about 15.0% of At Tabaqa residents were illiterate, with men comprising 27.0% of these. Of the literate population, 14.8% could read and write but had received no formal schooling, 21.4% had completed elementary education, 30.8% had completed preparatory education and 18.0% had completed secondary and higher education. Table 5 shows the 1997 education status in At Tabaqa by sex and attainment.

Sex	Illiterate	Can read & write	Elementary	Preparatory	Secondary	Associate Diploma	Bachelor	Higher Diploma	Master	PhD	Total
M	28	50	82	113	38	23	15	-	1	-	350
F	76	50	66	100	27	14	8	-	-	-	341
<b>T</b>	<b>104</b>	<b>100</b>	<b>148</b>	<b>213</b>	<b>65</b>	<b>37</b>	<b>23</b>	<b>-</b>	<b>1</b>	<b>-</b>	<b>691</b>

Source: PCBS, May 1999. Population, Housing and Establishment Census-1997, Final Results

As of the 2006/2007 scholastic year, there was one school in At Tabaqa village, called 'At Tabaqa Elementary Co-education School'. This is supervised by the government sector. In the same scholastic year there were 247 students, 14 teachers and 11 classrooms (See table 6).

		<b>Government</b>	<b>Private</b>	<b>Total</b>
<b>Co-education</b>	No. of Schools	1	-	<b>1</b>
	No. of class	11	-	<b>11</b>
	No. of Teachers	14	-	<b>14</b>
	No. of Students	247	-	<b>247</b>

Source: ARIJ Data Base – 2005

In 2006, there were two kindergartens in At Tabaqa and its localities. These kindergartens provided pre-school education to 52 children. Table 7 shows the number of kindergartens by name, number of children and supervising authority.

<b>No.</b>	<b>Kindergarten Name</b>	<b>Number of Children</b>	<b>Supervising Authority</b>
1.	Al Byeean Kindergarten	30	Charitable Society
2.	Al Zahrea Kindergarten	22	Charitable Society

As there are no secondary schools in the village, the village's students must travel to Dura village, about 4 km from At Tabaqa. The village council lists the distance to Dura, and that (due to lack of transportation) many students are forced to walk to school, as the main obstacles in encouraging secondary education.

## **Health Status**

The village lacks any kind of health service. There are no clinics, ambulance, or pharmacies in the area. There is only one simple governmental Health center visited by a governmental physician once a week. The village official's cites that healthcare problems in the villages include: the lack of specialized clinics, the lack of doctors in the village, and the absence of a hospital close to the village.

In emergency cases residents of At Tabaqa have receive their healthcare from neighboring villages including Dura and the city of Hebron.

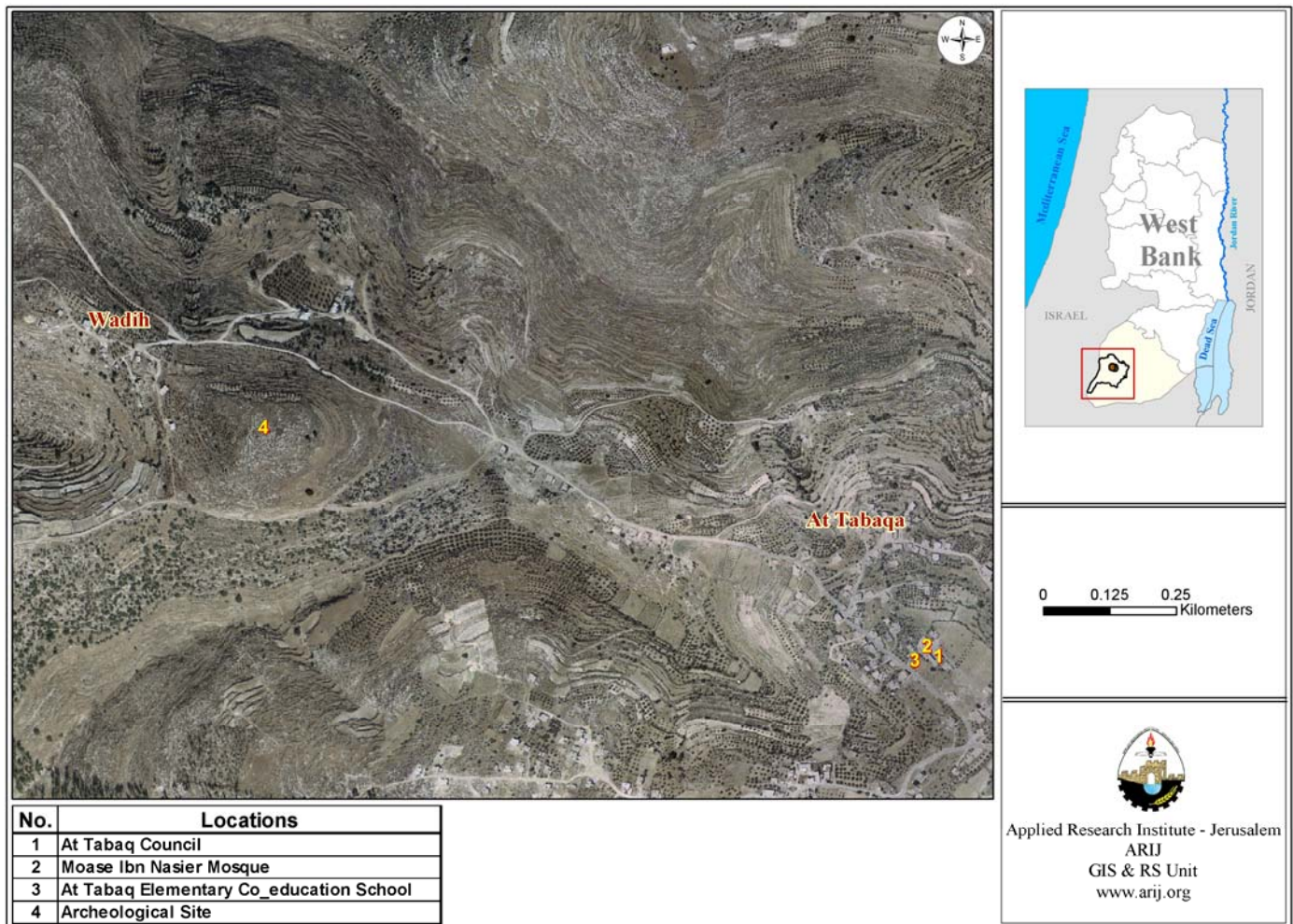
## **Religious and Archaeological Sites**

In terms of religious establishments, there is one mosque serving the community; Mousa bin Nosier Mosque. There is only one historical site in the area, which is the Maqam Al 'Abead.

## Institutions and Services

At Tabaqa lacks many important institutions. They do have a village council which is the most prominent institution in the village. The council was established in 1998 and provides a small amount of services to the residents.

**Map 2: Main locations in At Tabaqa village**



## Infrastructure and Natural Resources

- **Telecommunication Services:** At Tabaqa village is connected to a telecommunication network.
- **Water Services:** At Tabaqa is not connected to any type of water network. The village relies heavily on alternative resources of water- namely rainwater collection cisterns. Village officials' state several water related issues in the village, these include: the lack of rainwater collection cisterns, the lack of reservoir, and the unavailability of water during the summer season.

- **Electricity Services:** At Tabaqa village has been connected to the electricity network since 1987. Approximately 99% of housing units in the village are connected to the network. At Tabaqa village council manages the distribution of electricity which is supplied by South Electricity Company.
- **Solid Waste Collection:** Solid waste management in At Tabaqa is operated by the village council in cooperation with ‘the Joint Services Council’. The solid waste is collected from the residential area and sent to a dumping site (in Dura) which operated by Joint Services Council. This site is approximately 8km from At Tabaya village.
- **Sewage Disposal Facilities:** At Tabaqa village is not connected to a sewage system, wastewater is collected in cesspits.
- **Transportation Services:** There are about 8 km of internal roads in At Tabaqa village. 4 km of these are paved and in a good condition. 4 km remain not paved at all. The village lacks any kind of transportation service. The residents rely on their own cars and taxis which services other localities.

The main obstacles facing the transportation of passengers in the village include: a shortage of vehicles, and a severe lack of transportation services.

## Agricultural Sector

At-Tabaqa villages lie on a total area of 4000 dunums. 1890 dunums are considered arable land. However, only 1635.5 dunums are cultivated.

Locality	Total Area	Arable Land		Build up Area	Forests Area	Open Spaces and Rangelands
		Uncultivated Area	Cultivated Area			
At-Tabaqa	4000	1890	1635.5	350	200	1100

Source: Palestinian Ministry of Agricultural (MoA), 2006

There is only one plastic house and no tunnels in At-Tabaqa village.

Locality	Plastic Houses	High Tunnels	Low Tunnels	Total
At-Tabaqa	0.5	0	0	0

Table 10 shows the different types of rain-fed and irrigated open cultivated vegetables in the village of At-Tabaqa. The rain-fed fruity vegetables are the most cultivated with an area of about 42 dunums, whereas the irrigated fruity vegetables accounts for approximately 3.5 dunums. The most common vegetables cultivated within the area are: squash, snack cucumber and tomato.

Locality	Total fruity vegetables		Total leafy vegetable		Total green legumes		Total bulbs		Total other vegetables		Total rain fed and irrigated open vegetables	
	RF	Irr	RF	Irr	RF	Irr	RF	Irr	RF	Irr	RF	Irr
At-Tabaqa	42	3.5	0	5	2	0	0	4	7	6	51	18.5

RF: Rain-fed, IRR: Irrigated

There are 3 types of aromatic medical plants in the village of At-Tabaqa (which accounts for approximately 4 dunums of land). These plants are thyme, mint and sage.

Locality	Total aromatic medicinal plants		
At-Tabaqa	Rain-fed	Irrigated	Total
	2	2	4

In the village of At-Tabaqa, there are 757 olive tree plantations. Other trees planted in the area include almond trees, plum (Barqouq) trees, fig trees and grape vines.

Locality	Total area of olives		Total area of citrus		Total area of stone-fruits		Total area of pome fruits		Total area of nuts		Total area of the other fruit		Total area of horticulture and olive tree	
	RF	Irr	RF	Irr	RF	Irr	RF	Irr	RF	Irr	RF	Irr	RF	Irr
At-Tabaqa	757	0	0	2	86	0	10	0	72	0	331	0	1256	2

RF: Rain-fed, IRR: Irrigated

Table 13 shows the total field crops cultivated in the village of At-Tabaqa. Cereals (in particular wheat and barley) are the most commonly cultivated crops with an area of about 180 dunums. In addition, the cultivation of forage crops such as common vetch and bitter vetch is also prevalent in the village of At-Tabaqa.

Locality	Total Cereals		Total bulbs		Dry legumes		Oil crops		Total seeds		Total forage crops		Total stimulating crops		Total other crops		Total Field crops	
	RF	Irr	RF	Irr	RF	Irr	RF	Irr	RF	Irr	RF	Irr	RF	Irr	RF	Irr	RF	Irr
At-Tabaqa	180	0	4	0	17	0	0	0	1	0	100	0	2	0	0	0	304	0

RF: Rain-fed, IRR: Irrigated

The data also indicates that the residents of At-Tabaqa village are also dependent upon livestock, such as sheep, goats, and chicken, in addition to about 33 bee hives.

Locality	Cows*	Sheep	Goats	Camels	Horses	Donkeys	Mules	Broilers	Layers	Bee Hives
At-Tabaqa	6	850	190	0	0	13	3	81,800	---	33

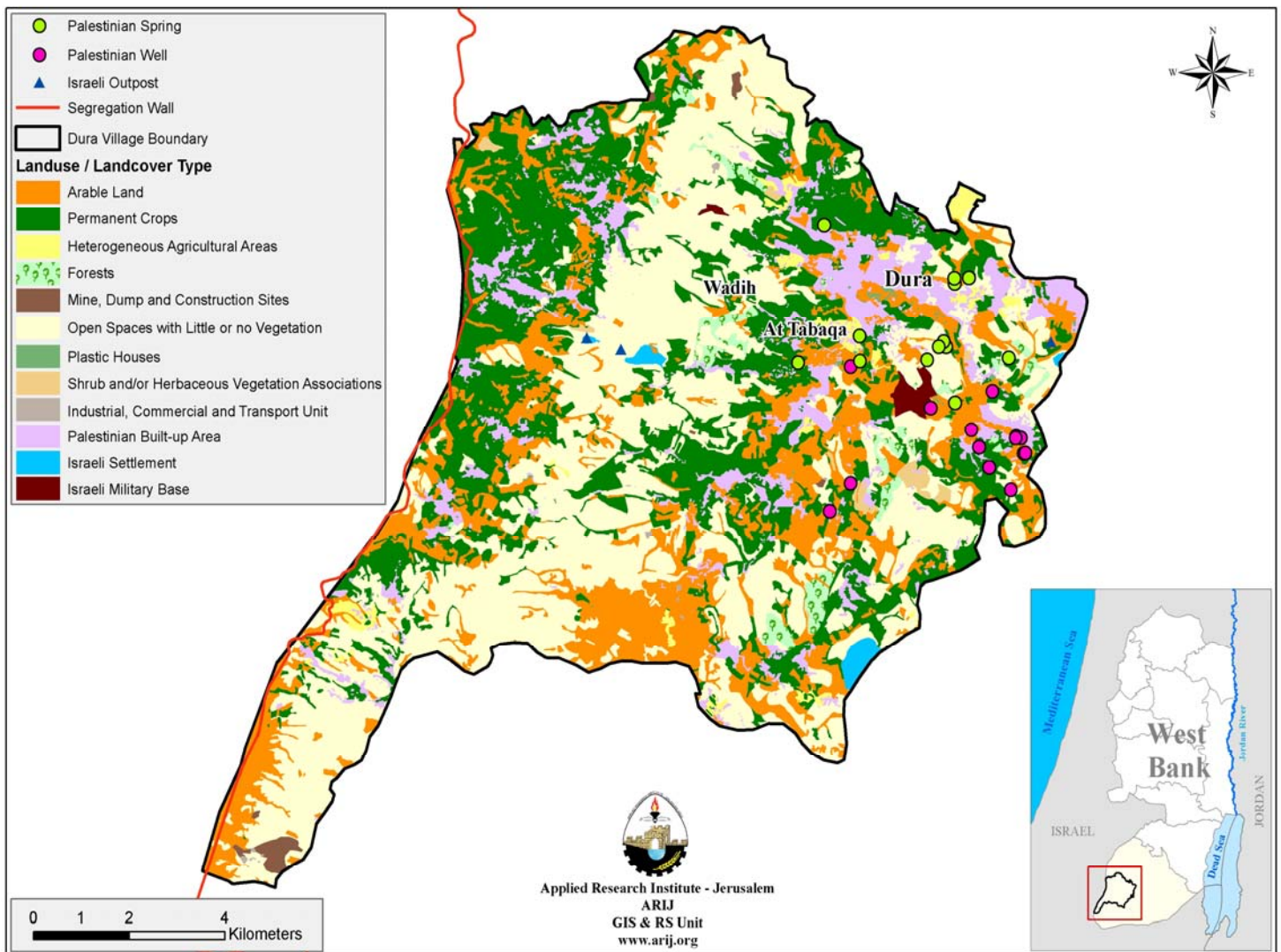
\*Including cows, bull calves, heifer calves and bulls

As mentioned previously, At Tabaqa is an agricultural village. It has a large area most of which is arable land. 1,890 dunums are arable land and 10% of the residents are engaged in agriculture activities. At Tabaqa is well-known for its vineyards and fruit trees. According to a survey, the cultivated area in At Tabaqa is approximately 1,635 dunums and there are about 255 dunums of uncultivated land. This is due to a shortage of capital, a shortage of water and land that is unsuitable for agriculture.

Most of agriculture in At Tabaqa is rain fed, but the field survey data indicated that the farmers also depend on the water network and cisterns to help irrigate their crops.

Other than the 2 km of agricultural roads in At Tabaqa that can only used by the farmers, there are no suitable roads for general use. The village is in need of a construction of new roads that can link the vast agricultural area of the village.

**Map 3: Land use/ Land cover and Segregation wall route in At Tabaqa village.**



## Development Plans and Projects

Since 2004, At Tabaqa Village Council has implemented one project for the development of the village's infrastructure. The project was funded by outside donors:

No.	Project name	Type	Funded by
1.	Paved roads	Infrastructure	German Bank

## Locality Development Priorities and Needs

According to the village council, At Tabaqa suffers from a shortage of many infrastructural and service needs. Table 15 shows development priorities of the village.

No.	Sector	Strongly Needed	Needed	Moderately Needed	Not Needed	Notes
<b>Infrastructural Needs</b>						
1.	Opening and Pavement of Roads			*		
2.	Construction of New Water Networks	*				5 km
3.	Rehabilitation of Old Water Networks				*	
4.	Construction of Water Reservoirs				*	
5.	Extending the Water Network to cover New Built up Areas		*			
6.	Construction of Sewage Disposal Network			*		
<b>Health Needs</b>						
1.	Building of New Clinics or Health Care Centre		*			
2.	Rehabilitation of Old Clinics or Health Care Centres				*	
3.	Purchasing of Medical Equipments and Tools				*	
<b>Educational Needs</b>						
1.	Building of New Schools	*				
2.	Rehabilitation of Old Schools			*		
3.	Purchasing of New Equipments for Schools			*		
<b>Agriculture Needs</b>						
1.	Rehabilitation of Agricultural lands			*		
2.	Building Cisterns		*			
3.	Construction of Barracks for Livestock			*		
4.	Veterinary Services			*		
5.	Seeds and Hay for Animals			*		
6.	Rehabilitation of Greenhouses			*		
7.	Field Crops Seeds			*		
8.	Plants and Agricultural Supplies			*		