

As Sura Village Profile



Prepared by



The Applied Research Institute – Jerusalem
ARIJ

Funded by



Spanish Cooperation



Azahar program

September 2007

Table of Content

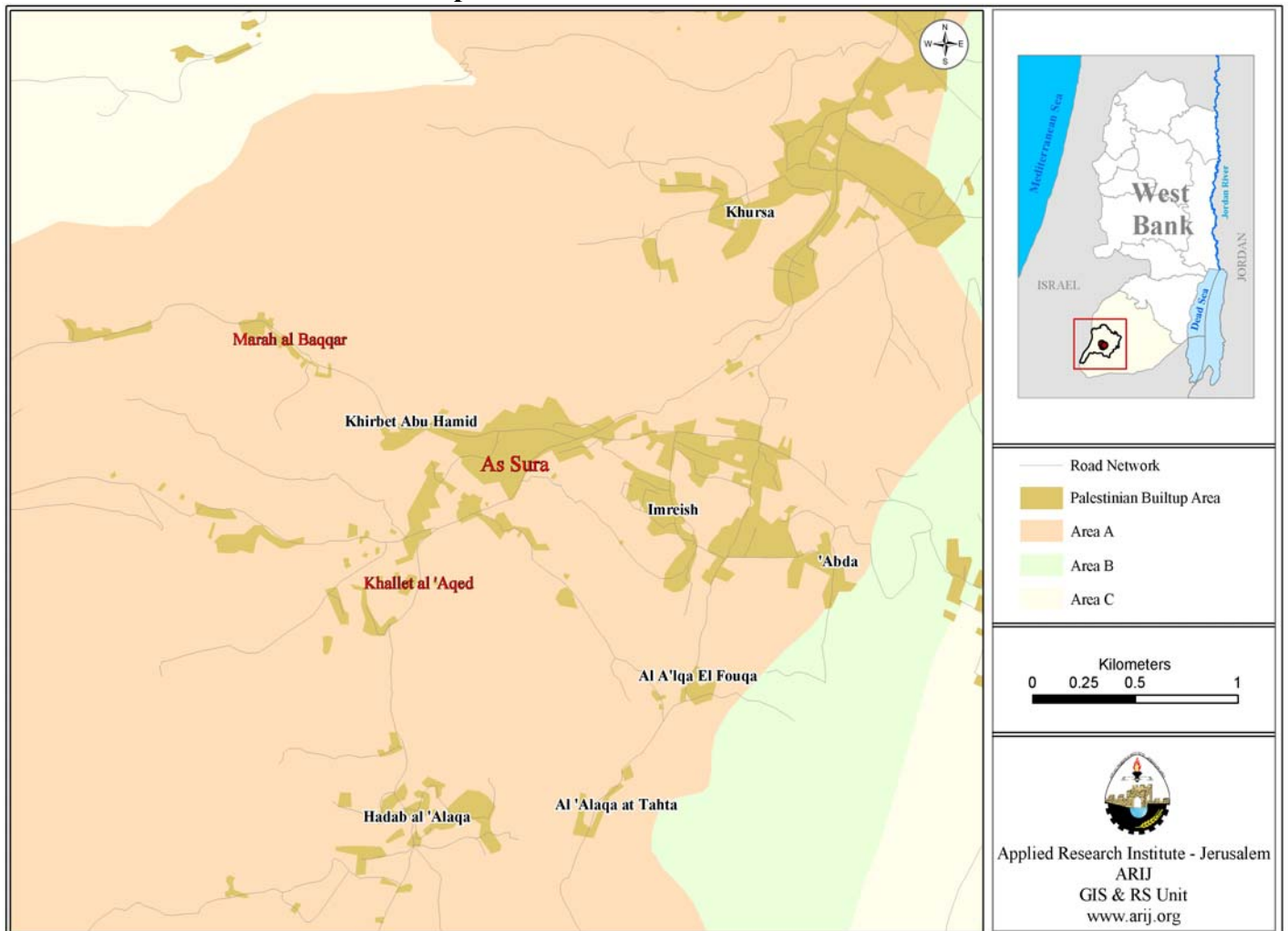
<i>Location and Physical Characteristics</i>	2
<i>History</i>	3
<i>Demography and Population</i>	3
<i>Economy</i>	5
<i>Education</i>	7
<i>Health Status</i>	8
<i>Religious and Archaeological Sites</i>	8
<i>Institutions and Services</i>	8
<i>Infrastructure and Natural Resources</i>	9
<i>Agricultural Sector</i>	10
<i>Impact of the Israeli Occupation</i>	12
<i>Development Plans and Projects</i>	13
<i>Locality Development Priorities and Needs</i>	13

As Sura Village Profile

Location and Physical Characteristics

As Sura is a Palestinian village in Dura region which is located 15 km to the southwest of City of Hebron in the southern part of the West Bank. It is bordered by Imreish to the east, Khursa to the north, Kherbet Abu Hamed to the west and by the villages of Hadab al 'Alaqa and Khamlet al 'Aqed to the south.

Map1: As Sura location and borders



The total area of As Sura village is estimated to be approximately 7000 dunums. Of which 1050 dunums are Palestinian built-up areas, 2660 dunums are designated agricultural land, 112 dunums are forests and 660 dunums are classified as open space areas.

As Sura village is located on a mountain south of the city of Dura, at a height between 745 and 790 m above Sea level. The mean annual rainfall in As Sura village is 435.9 mm; the average annual temperature is 15.7°C, and the average annual humidity is 60.6% (ARIJ database, 2006).

As Sura village is considered a rural area as it complies with the demographic and institutional criteria relevant to rural areas. It is governed by a village council, which comprises of seven members, and was established in 1996. Services that are provided by the council include:

- Infrastructural services such as water, electricity, transportation (including surfaced, open and road maintenance).
- Educational services.
- Social development services.

According to the data collected from the village council, As Sura village includes Marah al Baqqar and Khamlet al 'Aqed villages.

History

As Sura village history dates back to the 1930s where it was a home to only a small number of residents. However, the year 1948 saw an influx of new people and families to the village. These were people expelled from Israel due to the 1948 war. The name 'As Sura' comes from the word "Masrora" which means collected together and put into a bag. The reasoning is that the village is situated on the peak of a mountain and access to the village can only be achieved via one entrance.

Photo of As Sura village



Demography and Population

According to Palestinian Central Bureau of Statistics (PCBS) Census in 1997, the total population of As Sura village was 1,573 people, of whom 1,282 were living in As Sura village, 141 were living in Marah al Baqqar village, and 150 were living in Khamlet al 'Aqed village. Of the 1,573 inhabitants, 819 were males (and 754 females) (see table 1). There were 221 households in the village living in 217 housing units.

Village	Male	Female	Total
As Sura	671	611	1,282
Marah al Baqqar	75	66	141
Khallet al 'Aqed	73	77	150
Total	819	754	1,573

Source: PCBS, May 1999. Population, Housing and Establishment Census-1997, Final Results

Age Group and Gender

The Results of the 1997 Population, Housing and Establishment Census, showed the demographic distribution of the population by age group and sex in As Sura (as shown in table 2) to be: 0-14 age group constituting 50.5% of the total population (the largest in As Sura), the 15-64 age group constituting 47.4% of the total population, and the 65 years or above constituting only 2.1% of the total population.

The sex ratio in As Sura village is 108.6 males per 100 females. In terms of percentage, the males in the village constitute 52.1% of the total population.

Sex	Age Group			Total	Percent (%)
	0-14	15-64	65+		
Male	432	365	22	819	52.1
Female	362	381	11	754	47.9
Total	794	746	33	1,573	100

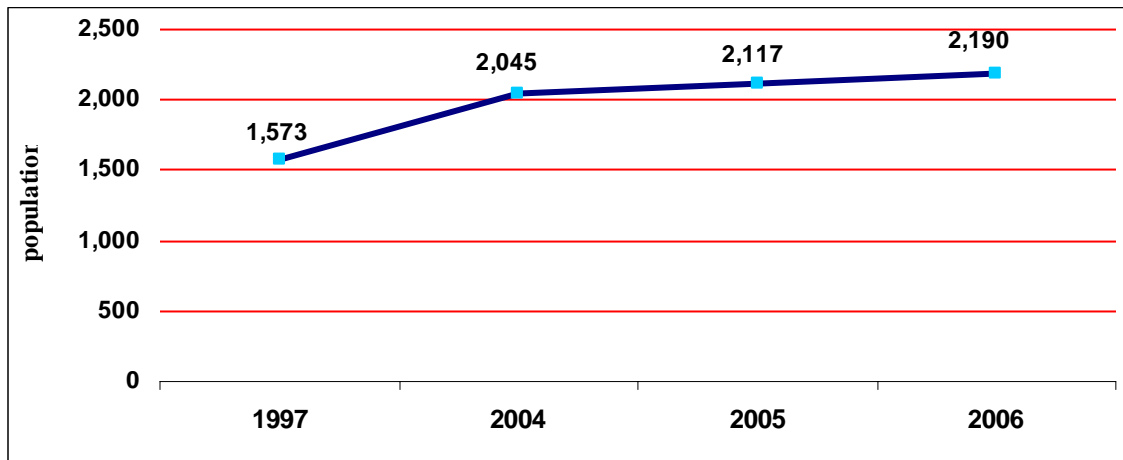
Source: PCBS, May 1999. Population, Housing and Establishment Census-1997, Final Results
This data includes population figures from the villages of As Sura, Marah al Baqqar, and Khallet al 'Aqed

Population Growth

According to PCBS, the projected population of As Sura village by mid 2005 was 1,726, with an increase of 30.0% from 1997. Between mid 2005 and mid 2006 the population was expected to increase by 3.4% to reach 1,785. See table 3. According to village officials, the total population of As Sura village was approximately 2,000 as of 2006.

Locality name	Census 1997	Mid year population		
		2004	2005	2006
As Sura	1,282	1,667	1,726	1,785
Marah al Baqqar	141	183	189	196
Khallet al 'Aqed	150	195	202	209
Total	1,573	2,045	2,117	2,190
% increase from 1997		30.0%	34.6%	39.2%

Source: http://www.pcbs.gov.ps/Portals/_pcbs/populati/popu_list.aspx

Figure 1: Population growth in As Sura village

Families

The majority of the inhabitants of As Sura and Khallet al 'Aqed villages come from the following families: Al Masri (المصري) (30%), Abu Hashem (أبو هاشم) (20%), Abu Awad (أبو عوض) (15%), Abu Khartabel (أبو خرطيل) (10%), Al Sha'rawi (الشعراوي) (5%), Amro (عمرو) (10%), Kutaeneh (قطينة) (10%) and Al Darabee' (الدرابيع) (5%).

In addition, there are three families living in Marah al Baqqar village: Amro (50%), Al Darabe' (40%) and Abu Awad (10%).

Economy

According to the field survey conducted by ARIJ for Hebron localities, about 50% of working age As Sura residents work inside Israel. Hence the village largely depends on the Israeli labor market. The economic base of As Sura village also depends on agriculture, (30% of the population in the working age are depend on agricultural activities). In terms of the private sector services, there are approximately 12 grocers, one cloths shop, three blacksmiths, one carpenter, and three other service shops. In opposite Marah al Baqqar lack of any institutions and services, and the residents access there needing from As Sura or from Dura city.

According to the field survey conducted by ARIJ on 2007 for Hebron localities, the most affected groups in the village by the Israeli activities during the Second Intifada were:

- 1) Workers previously employed on the Israeli labor market.
- 2) Families maintaining six or more individuals.
- 3) Small-holder farmers.
- 4) Small-holder traders.
- 5) Other social groups.

Labor Force

According to the 1997 PCBS Census, final results indicated the total population who is willing to work in As Sura village were 288 people (10 years and above). Of these, 228 were employed, 97.8% of these being male. The total number of economically inactive persons is 694, of whom 45.1% are students, 37.0% housewives and 5.8% are unable to work. Housewives represent the largest proportion of the economically inactive sector (See table 4).

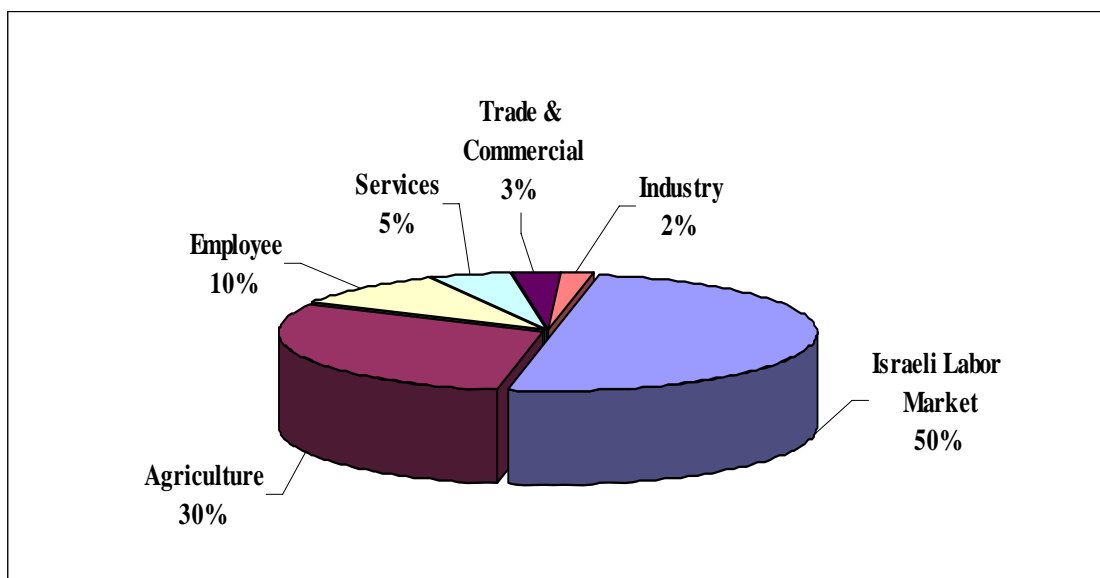
Table 4: As Sura Population (10 years and above) by sex and activity status											
Sex	Economically Active				Economically Inactive						Total
	Employed	Currently Unemployed	Unemployed (Never Work)	Total	Student	House wives	Unable to work	Not working & Not looking for Work	Others	Total	
M	223	37	23	283	170	0	28	6	7	211	494
F	5	0	0	5	143	257	12	1	70	483	491
T	228	37	23	288	313	257	40	7	77	694	985

*Source: PCBS, May 1999. Population, Housing and Establishment Census-1997, Final Results
This data includes population figures from the villages of As Sura, Marah al Baqqar, and Khallet al 'Aqed*

According to village officials' estimates, the economic base of the village consists of the following sectors:

- The Israeli Labor Market (50%)
- Agricultural Sector (30%)
- Government or Other Employees (10%)
- Services Sector (5%)
- Trade and Commercial Sector (3%)
- Industrial Sector (2%)

Figure 2: Percentage of economic activity in As Sura village



Education

The 1997 PCBS, Population, Housing and Establishment Census showed that about 147 village residents (aged 10 and above) were illiterate. This represented a total percentage of 14.9%. The percentage of illiteracy among females (66.7%) was double that of males (33.3%). Of the literate population, 15.8% of residents were able to read and write but had received no formal education. 26.2% completed Elementary education, 30.3% completed Preparatory education and 7.2% of the population (aged 10 and above) had completed elementary, preparatory and secondary education respectively. 5.6% had completed further education. See table 5.

Table 5: As Sura population (10 years and above) by sex and educational attainment

Sex	Illiterate	Can read & write	Elementary	Preparatory	Secondary	Associate Diploma	Bachelor	Higher Diploma	Master	PhD	Total
M	49	73	118	162	42	24	25	1	0	0	494
F	98	83	140	136	29	5	0	0	0	0	491
T	147	156	258	298	71	29	25	1	0	0	985

Source: PCBS, May 1999. Population, Housing and Establishment Census-1997, Final Results
This data includes population figures from the villages of As Sura, Marah al Baqqar, and Khallet al 'Aqed

The education sector in the village is supervised by the Palestinian Ministry of Higher Education (MOHE). The field survey data indicated that in the village, there are two secondary schools serving the residents of As Sura, Marah al Baqqar and Khallet al 'Aqed villages, one school for boys and the second for girls (See table 6).

Table 6: The schools in As Sura by name, stage, sex and supervising authority.

No.	School Name	Stage	Sex	Supervising Authority
1.	As Sura Boys Secondary School	Secondary	Male	Governmental
2.	As Sura Girls Secondary School	Secondary	Female	Governmental

Source: ARIJ Survey, 2006

According to MOHE data for the scholastic year 2006/2007, there were 816 students at these schools, of which 379 were males (437 females). There were 27 classrooms, and 41 teachers in As Sura (See table

Table 7: No. of Schools, Classes and Students by Sex in As Sura village (2006/2007)

		Government	Private	Total
Male	No. of Schools	1	-	1
	No. of class	15	-	15
	No. of Teachers	21	-	21
	No. of Students	437	-	437
Female	No. of Schools	1	-	1
	No. of class	12	-	12
	No. of Teachers	14	-	14
	No. of Students	379	-	379

Source: Ministry of Higher Education –Hebron Directorate -2006/2007

In 2006, there were two kindergartens in the village with about 65 children in attendance. Table 8 below shows the number of kindergartens by name, as well as the number of attending children and corresponding supervising authority.

Table 8: The kindergartens in As Sura by name, number of children in attendance and corresponding supervising authority.			
No.	Kindergarten Name	Number of Children	Supervising Authority
1.	As Sura Kindergarten	35	Catholic Relief
2.	Al Aqsa Candle Kindergarten	30	Private

Source: ARIJ Data Base – 2006

The schools in As Sura village provided Secondary education in the arts but students are forced to travel eight kilometres to Dura to complete their secondary education in science. The education sector in the village is suffering from the following issues; a lack of classrooms, a lack of playgrounds and playing fields, as well as a lack of toilet facilities.

Health Status

In As Sura village, there is a maternity and pediatric center run by the Palestinian Ministry of Health (MOH). In addition this center provides health services to the residents of Marah al Baqqar and Khallet al ‘Aqed. There is one pharmacy that serves the three villages.

The village would greatly benefit from the construction a health clinic or a 24-hour center providing health services. The addition of a full time physician in the clinic is a necessity.

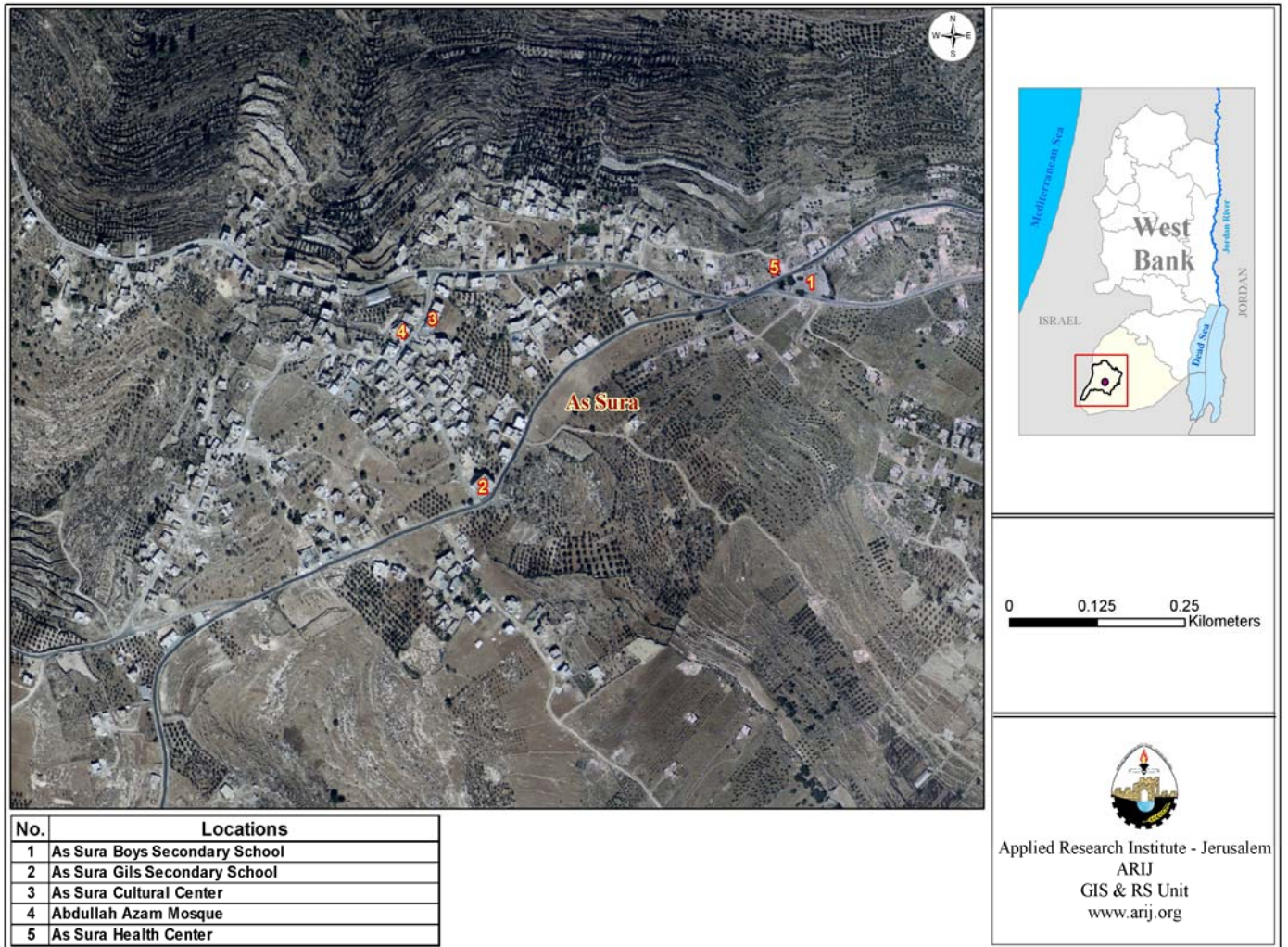
Religious and Archaeological Sites

There are two mosques in As Sura village: Al Farouq Mosque and Abdallah Azam Mosque. There is also one mosque in Marah al Baqqar: Marah al Baqqar Mosque and one mosque in Khallet al ‘Aqed village: Khallet al ‘Aqed Mosque.

Institutions and Services

The village council, founded in 1996, is the main institution of the village. In addition, there is also a cultural center, a women’s’ charitable society, and an office for agricultural extension (this office provided services to local farmers).

Map 2: Main locations in As Sura village



Infrastructure and Natural Resources

Telecommunication Services: As Sura village is connected to a main telecommunication network. Official reports suggest that 30% of the housing units in the village are connected to a telecommunications network.

Water Services: As Sura village is not connected to any water network. Alternative water supply comes mainly from rainwater collection cisterns. There are about 100 domestic cisterns belonging to As Sura residents. Village officials cite concerns over lack of water in the summer season. This means that the residents have buy the water from Dura, Hebron or other places which can be quite costly.

Electricity Services: Since 1998, As Sura village has been connected to an electricity network supplied by the Israeli National Power Electrical Company (Qutria). According to village officials, 100% of the housing units are connected to the network. Major problems do exist however. These include; a weak electrical current, high prices, and an insufficient electricity generator.

Sewage Disposal Facilities: The village is not connected to any sewage disposal network. Wastewater is disposed of in the village's cesspits.

Solid Waste Collection Services: There are no solid waste services in the village. Each household must dispose of its own refuse by burning it. Village officials estimated the amount of solid waste generated daily in the village is equal to about one ton.

Transportation Facilities: The village has an informal transportation network that is comprised of three private cars. The main problems the locals face with regards to transportation in the village are; a lack of maintenance of main roads, a lack of vehicles, and a lack of automotive services. In terms of road quality; 3.5 km of roads are surfaced and in good condition (1.5 km are main roads and 2 km are internal roads). 2 km of internal roads are surfaced but in poor condition, and 10 km are un-surfaced roads used only for agricultural purposes.

Agricultural Sector

As Sura village lies on a total area of about 7,000 dunums of which 2,660 dunums are arable land and 2,170 dunums are cultivated land. And as mentioned previously, 30% of the people of the working age are engaged in some form of agricultural activities. Table below shows the land use in As Sura village.

Locality	Total Area	Arable Land	Cultivated Area	Build up Area	Forests Area	Open Spaces and Rangelands
As-Sura	5,000	2040	1691	950	90	300
Marah al Baqqar	2,000	620	479	100	22	360
Total	7,000	2,660	2,170	1050	112	660

Source: Palestinian Ministry of Agricultural (MoA), 2006

In the village, there are two greenhouses that make up an area equal to approximately two dunums. These specifically cultivate cucumbers. The rain-fed fruity vegetables are the most cultivated in the village with a total area equal 215 dunums, in addition to 18 dunums of other vegetables such as cauliflower. The most common fruity vegetables cultivated in the village are squash, snake cucumber and gourd.

Locality	Fruity Vegetables		Leafy Vegetable		Green Legumes		Bulbs		Other Vegetables		Rain fed and Irrigated Open Vegetables	
	RF	Irr.	RF	Irr.	RF	Irr.	RF	Irr.	RF	Irr.	RF	Irr.
As-Sura	215	3.5	0	2	7	1.5	0	1	20	1	242	9

RF: Rain-fed, IRR: Irrigated

There are 3 types of aromatic medical plants in As-Sura village which make up a total area of about 7 dunums. 6 dunums of which are rain fed and one dunum is irrigated. These plants are thyme, sage, and mint.

In As Sura village, there is a total area of 893 dunums olive trees plantations. In addition to the 95 dunums of nut trees, 38 dunums of stone fruits, and 147 dunums that are cultivated with other trees. The most common trees planted in the area are plum trees, peach trees, almond trees, fig trees, and grape vines.

Table 11: Total area of horticulture and olive tree in As Sura Village (dunum)

Locality	Olives		Stone-Fruits		Pome Fruits		Nuts		Other Fruit		Horticulture and Olive Tree	
	RF	Irr	RF	Irr	RF	Irr	RF	Irr	RF	Irr	RF	Irr
As-Sura	893	0	38	0	4	0	95	0	147	0	2963	0

RF: Rain-fed, IRR: Irrigated

Table 12 shows the total amount of field crops cultivated in the As Sura village. Cereals (in particular wheat and barley) are the most cultivated crops covering an area of about 394 dunums. In addition, the cultivation of forage crops, (mainly Vetch) is common in As Sura village. Dry legumes (such as lentils and chick peas) also account for a total area of about 58 dunums.

Table 12: Total Field crops in As-Sura Village (dunum)

Locality	Cereals		Bulbs		Dry Legumes		Seeds		Forage		Stimulating		Other Crops		Field Crops	
	RF	Irr	RF	Irr	RF	Irr	RF	Irr	RF	Irr	RF	Irr	RF	Irr	RF	Irr
As-Sura	506	0	5	0	72	0	2	0	139	0	4	0	5	0	733	0

RF: Rain-fed, IRR: Irrigated

As Sura residents also depend on livestock and dairy production. About 10% of households in As Sura village rear and keep livestock. There are about 524 cows, 523 goats, 2,870 sheep, 2 horses, 41 donkeys and 2 mules in the village. There are also 26 poultry farms with approximately 240,600 broilers birds and 9,800 layers birds. As Sura also has approximately 125 bee hives.

Table 13: Live Stock in As-Sura Village

Locality	Cows*	Sheep	Goats	Horses	Donkeys	Mules	Broilers	Layers	Bee Hives
As-Sura	524	2,870	523	2	41	2	240,600	9,800	125

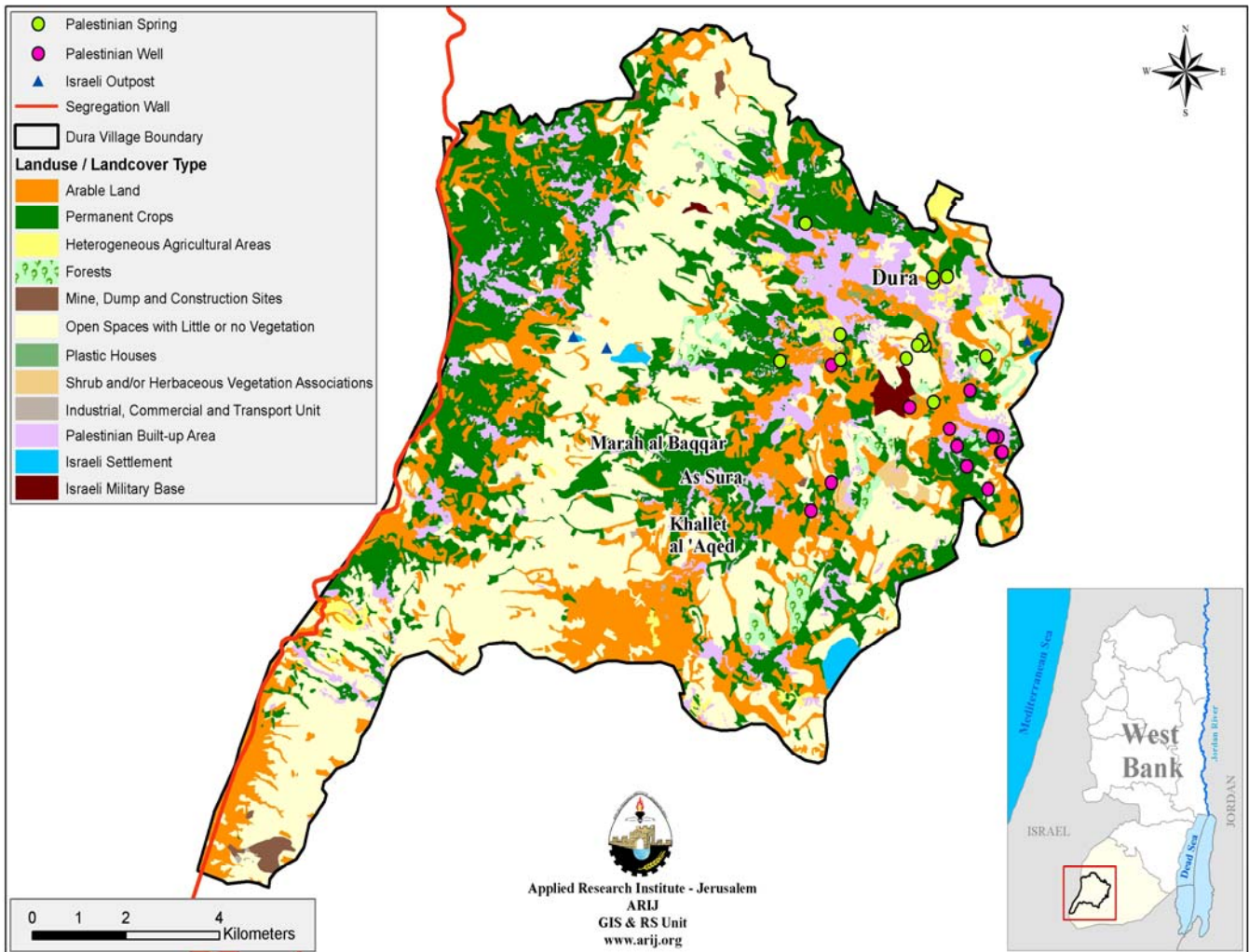
*Including cows, bull calves, heifer calves and bulls

The agricultural sector in the village has suffered severely from a lack of water, a lack of capital investment and general economic infeasibility. In addition, there has also been a severe lack of pasture land, agricultural machinery, and agricultural roads – which all culminate to agricultural efficiency. The main source of water for irrigation in the village comes from rainwater collection wells.

There are 10 km of un-surfaced agricultural roads. These are only suitable for driving tractors and other agricultural machines. These roads do not cover the entire village’s agricultural area.

The Israeli Forces confiscated about 50 dunums of agricultural land from the village since the outbreak of the Second Intifada.

Map 3: Land use/ Land cover and Segregation Wall route in As Sura village.



Impact of the Israeli Occupation

Though there are no permanent checkpoints in the surrounding area of the village, the residents are subject to ‘flying’ checkpoints. Farmers in the village continue to experience difficulty in reaching their fields and harvesting their crops. In addition, villagers experience difficulty in reaching, or transporting sick people, to health centers and hospitals. Doctors have also experienced difficulty in reaching the village. A further serious factor is the environmental pollution the village’s water has been subjected to, as a result of Israeli activity.

Development Plans and Projects

As Sura village council has established a development plan which includes many different development projects. Since 2004 the council has implemented many projects funded by As Sura residents. These projects include:

No.	Project name	Type	Funded by
1.	Building As Sura Boys Secondary School	Educational	As Sura Residents
2.	Building As Sura Girls Secondary School	Educational	As Sura Residents
3.	Building the village council	Services	As Sura Residents

Locality Development Priorities and Needs

According to As Sura village council, the village suffers from a shortage of many infrastructural and service needs. Table 15 shows development priorities of the village.

No.	Sector	Strongly Needed	Needed	Moderately Needed	Not Needed	Notes
Infrastructural Needs						
1.	Opening and Pavement of Roads	*				Agricultural roads ^
2.	Construction of New Water Networks	*				6 km
3.	Rehabilitation of Old Water Networks				*	
4.	Construction of Water Reservoirs			*		500 m ³
5.	Extending the Water Network to cover New Built up Areas				*	
6.	Construction of Sewage Disposal Network			*		
Health Needs						
1.	Building of New Clinics or Health Care Centre	*				
2.	Rehabilitation of Old Clinics or Health Care Centres				*	
3.	Purchasing of Medical Equipments and Tools		*			
Educational Needs						
1.	Building of New Schools	*				Elementary & Secondary
2.	Rehabilitation of Old Schools				*	
3.	Purchasing of New Equipments for Schools	*				
Agriculture Needs						

Palestinian Localities Study

Hebron Governorate

1.	Rehabilitation of Agricultural lands			*		100 dunums
2.	Building Cisterns			*		50 cisterns
3.	Construction of Barracks for Livestock				*	15 barracks
4.	Veterinary Services		*			
5.	Seeds and Hay for Animals			*		
6.	Rehabilitation of Greenhouses			*		20 greenhouses
7.	Field Crops Seeds	*				
8.	Plants and Agricultural Supplies	*				

^ 5,000 m main roads, 3,000 m internal roads, and 5,000 m agricultural roads