

Ar Ramadin Village Profile



Prepared by



The Applied Research Institute - Jerusalem

Funded by



Spanish Cooperation



Azahar program

October 2007

Table of Contents

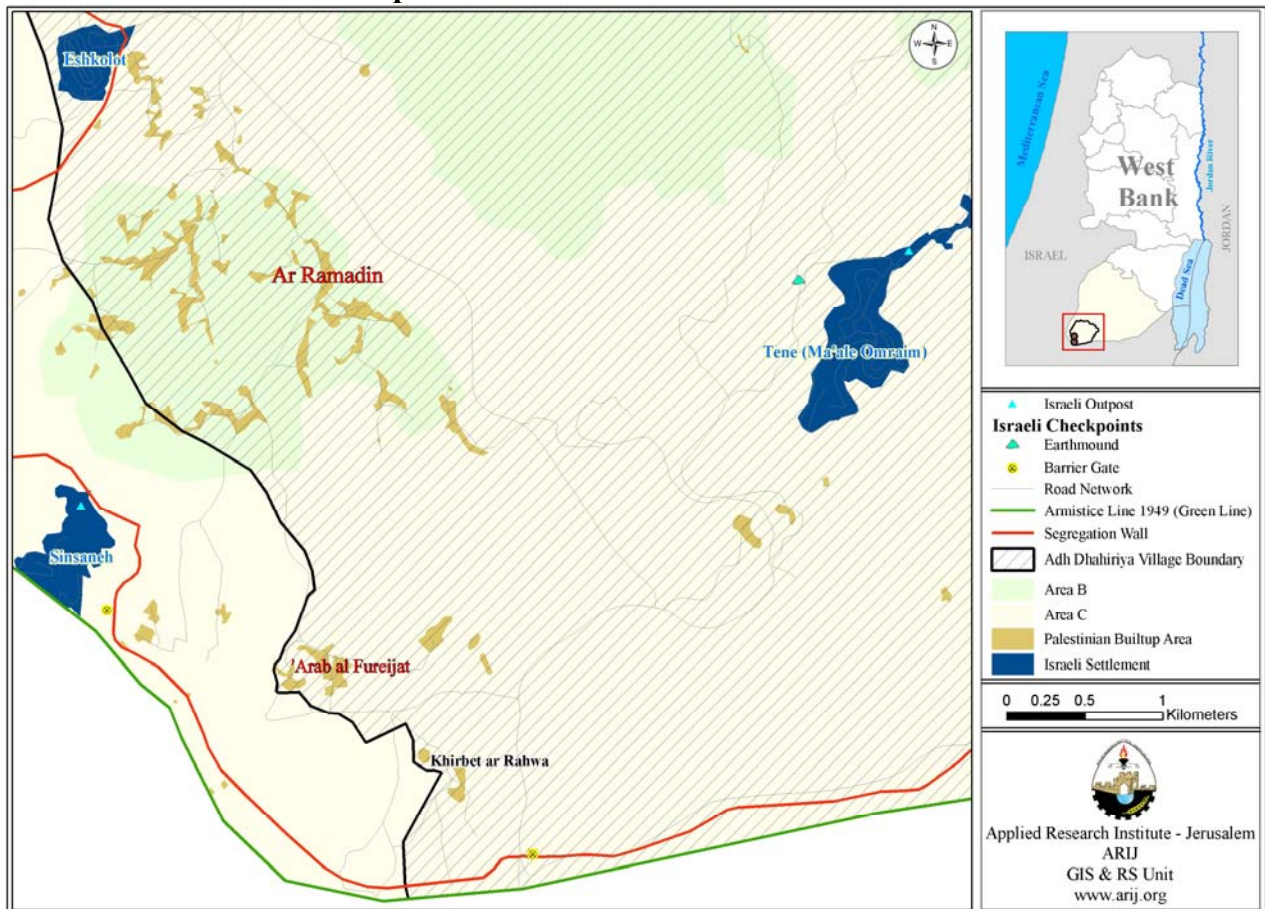
<i>Location and Physical characteristics</i>	<u>3</u>
<i>History</i>	<u>4</u>
<i>Demography and Population</i>	<u>5</u>
<i>Economy</i>	<u>6</u>
<i>Education</i>	<u>7</u>
<i>Health Status</i>	<u>9</u>
<i>Religious and Archaeological Sites</i>	<u>9</u>
<i>Institutions and Services</i>	<u>9</u>
<i>Infrastructure and Natural Resources</i>	<u>10</u>
<i>Agricultural Sector</i>	<u>11</u>
<i>Impact of the Israeli Occupation</i>	<u>13</u>
<i>Development Plans and Projects</i>	<u>14</u>
<i>Locality Development Priorities and Needs</i>	<u>14</u>

Ar Ramadin Village Profile

Location and Physical Characteristics

Ar Ramadin is a Palestinian Bedouin village located within the Adh Dhahiriya village boundary (according to the village borders specified during the British Mandate) to the southwest of Hebron city in the southern West Bank. It is bordered by the Beersheba – Hebron Main Road to the east, Adh Dhahiriya to the north, Dura lands and 1949 Armistice Line (Green Line) to the west and the 1949 Armistice Line (Green Line) to the south (See map 1).

Map 1: Ar Ramadin location and borders



Ar Ramadin is considered a rural area as it complies with the demographic and institutional criteria relevant to rural areas. Beginning in 1997, Ar Ramadin village has been governed by a village council appointed by Ministry of Local Authorities, which consists of nine members with four paid employees. The village council also provides services to ‘Arab al Fureijat village, which is included in Ar Ramadin village boundaries. The council provides infrastructure services to the residents including electricity, water, paved and repaired roads, and educational services including the establishment and reclamation of schools in addition to social and human services.

According to the Palestinian Ministry of Agricultural, the total area of Ar Ramadin village is 7,750 dunums, 3,500 dunums of which lies in the Ar Ramadin village and 4,250 dunums of which lies in the 'Arab al Fureijat area. Of the total lands, 5,500 dunums are considered arable land, which includes 5,000 dunums of agricultural lands. The built-up area is equal to 1,100 dunums, and open spaces with little or no vegetation and forest area equals about 1,150 dunums. According to village officials, the land confiscated by the Israeli Forces for the construction settlements and military bases is equal to about 8,000 dunums (See Table 1).

Village	Total Area	Arable Land	Agricultural Land	Built-up Area	Open Spaces
Ar Ramadin	3,500	2,200	2,000	800	500
'Arab al Fureijat	4,250	3,300	3,000	300	650
Total	7,750	5,500	5,000	1,100	1,150

Ar Ramadin village, located near Beersheba, lies at an elevation of 565 m above sea level and 'Arab al Fureijat lies at an elevation of 470m above sea level. It is characterized by moderate weather, the average annual temperature is about 19 °C, and the average annual humidity is 59.3%. Mean annual rainfall is 336 mm (ARIJ GIS, 2006).

History

The village was originally part of Beersheba's Bedouin community living in the Negev desert. After Al Nakba occurred in 1948 and Israel occupied the homelands of the Bedouin community, they were forced to migrate to a new area, the Adh Dhahiriya area, near their original lands. The name of the village is derived from the name of the first grandfather of the family "Ramadan". All residents of Ar Ramadin village trace their origins to the Negev Bedouin.

Photo of Ar Ramadin



Demography and Population

In 1997, the total population of Ar Ramadin was 2,513 people, of whom 1,231 were male and 1,282 were female. Of these, 2,207 inhabitants were living in Ar Ramadin village and 306 were living in 'Arab al Fureijjat village (See Table 2). There were 361 households and 360 housing units, with an average household size of seven people.

Village	Male	Female	Total
Ar Ramadin	1,093	1,114	2,207
'Arab al Fureijjat	138	168	306
Total	1,231	1,282	2,513

Source: PCBS, 1999. Population, Housing and establishment Census -1997, Final Results

Age groups and gender

The 1997 Census data shows the distribution of Ar Ramadin population by age group and sex (see Table 3). The table below shows that the largest age group, constituting 50.4% of the total population, is between 0-14 years. The 15-64 age group constitutes 47.2% and those 65 and older constitute just 2.4% of the total population.

Sex	Age			Total	percent
	0 -14	15 -64	65 +		
Male	608	588	35	1,231	49%
Female	658	598	26	1,282	51%
Total	1,266	1,186	61	2,513	100%

Source: PCBS, 1999. Population, Housing and Establishment Census-1997, Final Results
The data included Ar Ramadin and 'Arab al Fureijjat population

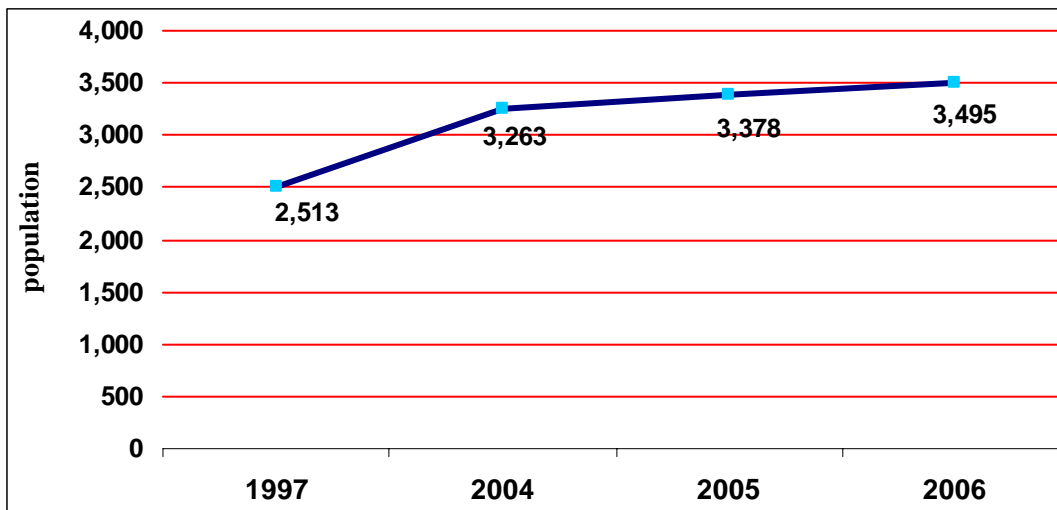
The sex ratio in the village was 96 males for every 100 females; in terms of percentages, males constitute 49% of the total population and females constitute 51% of the total population.

Population Growth

According to PCBS projections, the mid-year population of Ar Ramadin village for 2006 was estimated at 3,495 inhabitants, representing a population increase of 39.1% between 1997 and 2006 (See Table 4 and Figure 1).

	1997 Census	Mid-year population in		
		2004	2005	2006
Ar Ramadin	2,207	2,866	2,967	3,070
'Arab al Fureijjat	306	397	411	425
Total	2,513	3,263	3,378	3,495
Percentage of increase (%)	-	29.8%	34.4%	39.1%

Source: <http://www.pcbs.gov.ps/populati/pop10.aspx>

Figure 1: Population growth in Ar Ramadin village

Families

There are seven main families in Ar Ramadin village: Al Zagharna (الزغارنة) 52%, Al Shou'our (الشعور) 15%, Al Fureijat (الفريجات) and Al Mlihat (المليحات) 13%, Al Raghmat (الرغمات) 10%, Al Saoua'da (السواعدة) 4%, Al Daghaghma (الدغاغمة) 4%, and Al Masamra (المسامرة) 2%.

Economy

According to a 2007 ARIJ village questionnaire, more than half of the population of Ar Ramadin village works in the livestock trade. The agricultural and the Israeli labor market sectors are considered the second largest sectors of the economy. Due to the nature of village inhabitants that depend largely on agricultural activities (trade and cultivated), only a small portion of the population is employed in the public and private sectors. In terms of economic institutions, the village is served by six groceries and one service shop.

Village officials indicated that the social groups in the village most affected by Israeli activities since the Second Intifada are: 1) Previously workers in the Israeli labor market, 2) Small-holder farmers, 3) Housewives and children, 4) Families maintaining six individuals and more, and 5) Small-holder traders.

Labor Force

According to the PCBS, Population, housing and Establishment Census- 1997, there were 498 economically active persons and 1,059 non-economically active persons in Ar Ramadin village. Of the economically active, 66.9% were employed and 33.1% were currently unemployed or unemployed and had never worked. The percentage of males employed is higher than females with the employed population consisting of 98% males and 2% females. The largest group of non-economically active persons were housewives, constituting 54.9% of that population, with students forming 37.1% of the non-economically active population; the remaining 8.0% of this population were those unable to work or not working and not looking for work or other groups.

Table 5: Ar Ramadin population (10 years and above) by sex and employment status-1997

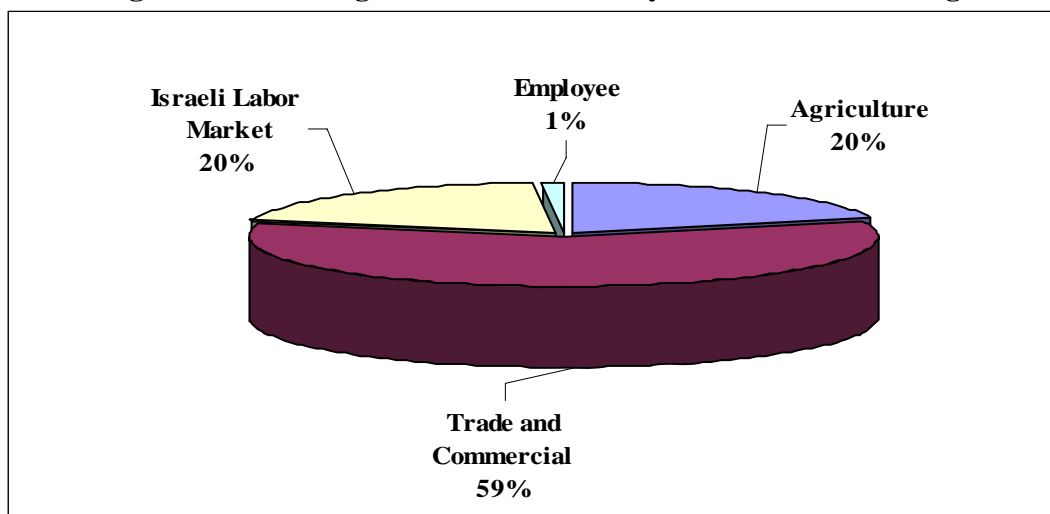
Sex	Economically Active				Not Economically Active						Total
	Employed	Currently Unemployed	Unemployed (Never Worked)	Total	Students	House-wives	Unable to work	Not working & Not looking For Work	Other	Total	
M	326	61	101	488	205	0	17	53	0	275	768
F	7	0	3	10	188	581	6	8	1	784	798
T	333	61	104	498	393	581	23	61	1	1,059	1,566

Source: PCBS, May 1999. Population, Housing and Establishment Census-1997, results
 The data included Ar Ramadin and 'Arab al Fureijat population

According to village officials, the economic base of Ar Ramadin is distributed as follows:

- The Trade and Commercial Sector (59%)
- The Agricultural Sector (20%)
- The Israeli Labor Market (20%)
- Employees (government or private institutions) (1%)

Figure 2: Percentage of economic activity in Ar Ramadin village



Education

Table 6 shows educational attainment by sex in Ar Ramadin village in 1997. The data shows that 24.5% of the population 10 years and older were illiterate, of whom 23% were males and 77% were female. Of the literate population, 17.4% could read and write but had no formal education, 25.4% had completed elementary school, 22.8% had finished preparatory school. Only 5.1% of residents had completed secondary school and 4.3% continued their higher education (associate diploma and above).

Table 6: Ar Ramadin population (10 years and above) by sex and educational attainment

Sex	Illiterate	Can read & write	Elementary	Preparatory	Secondary	Associate Diploma	Bachelor	Higher Diploma	Master	PhD	Total
M	88	119	204	244	52	44	14	0	1	0	768
F	295	154	194	113	27	5	4	0	0	0	798
T	383	273	398	357	79	49	18	0	1	0	1,566

Source: PCBS, 1999. Population, Housing and Establishment Census-1997, Final Results
The data included Ar Ramadin and 'Arab al Fureijat population

According to ARIJ field survey data there are three schools in Ar Ramadin, of which two are located in Ar Ramadin (one supervised by Governmental sector and one supervised by UNRWA). In the 'Arab al Fureijat village there is one school supervised by Governmental sector. All three schools are co-educational; two are elementary schools and one is a secondary school. Table 7 below shows the number of schools by name, stage, sex and supervising authority.

Table 7: The schools in Ar Ramadin by name, stag, sex and supervising authority

No.	School Name	Stage	Sex	Supervising Authority
1.	Ar Ramadin Co-education Elementary School	Elementary	Co-education	UNRWA
2.	Ar Ramadin Co-education Secondary School	Secondary	Co-education	Governmenta 1
3.	'Arab al Fureijat Co-education Elementary School	Elementary	Co-education	Governmenta 1

Source: ARIJ Survey, 2007

The data of the Palestinian Ministry of Higher Education (MOHE) reveals that at the end of the scholastic year 2006/2007 there were 725 students, 51 classes, and 41 teachers in Ar Ramadin village (See Table 8).

Table 8: No. of schools, classes and students by sex in Ar Ramadin village (2006-2007)

		Government	UNRWA	Total
Co-education	No. of Schools	2	1	3
	No. of class	17	24	41
	No. of Teachers	22	29	51
	No. of Students	305	420	725

Source: ARIJ Data Base – 2006

As of 2007, there is one kindergarten in Ar Ramadin village, Al Badiya Kindergarten. This kindergarten provides pre-education services to 90 children and is supervised by a private authority.

The education sector in Ar Ramadin is suffering from many obstacles including:

1. Distance of schools from the residential area
2. Transportation difficulties that students face
3. The existence of permanent checkpoints at the entrance to the village

Health Status

There are six health institutions in Ar Ramadin village: one private physician clinic, three health clinics, one maternity and pediatric center and one medical lab. The data collected from the village shows that most of the health institutions are supervised by UNRWA, which provides services to refugees. Though there are numerous health institutions in the village, the village still suffers from the lack of primary health care, and is in need of a full-time physician, in addition to needing an ambulance. Table 9 shows the number and distribution of health institutions in Ar Ramadin.

Institution	Governmental	Private	Charitable	UNRWA
Physician Clinic		1		
Health Center	1		1	1
Medical Lab				1
Maternity & Pediatric Center				1
Total	1	1	1	3

Source: ARIJ Data Base – 2007

Religious and Archaeological Sites

Three mosques serve village residents:

- Al Anwar Mosque
- Al Mohajereen Mosque
- Al Morabeteen Mosque

Additionally, several sites of historical and archaeological interest are located in the village, including:

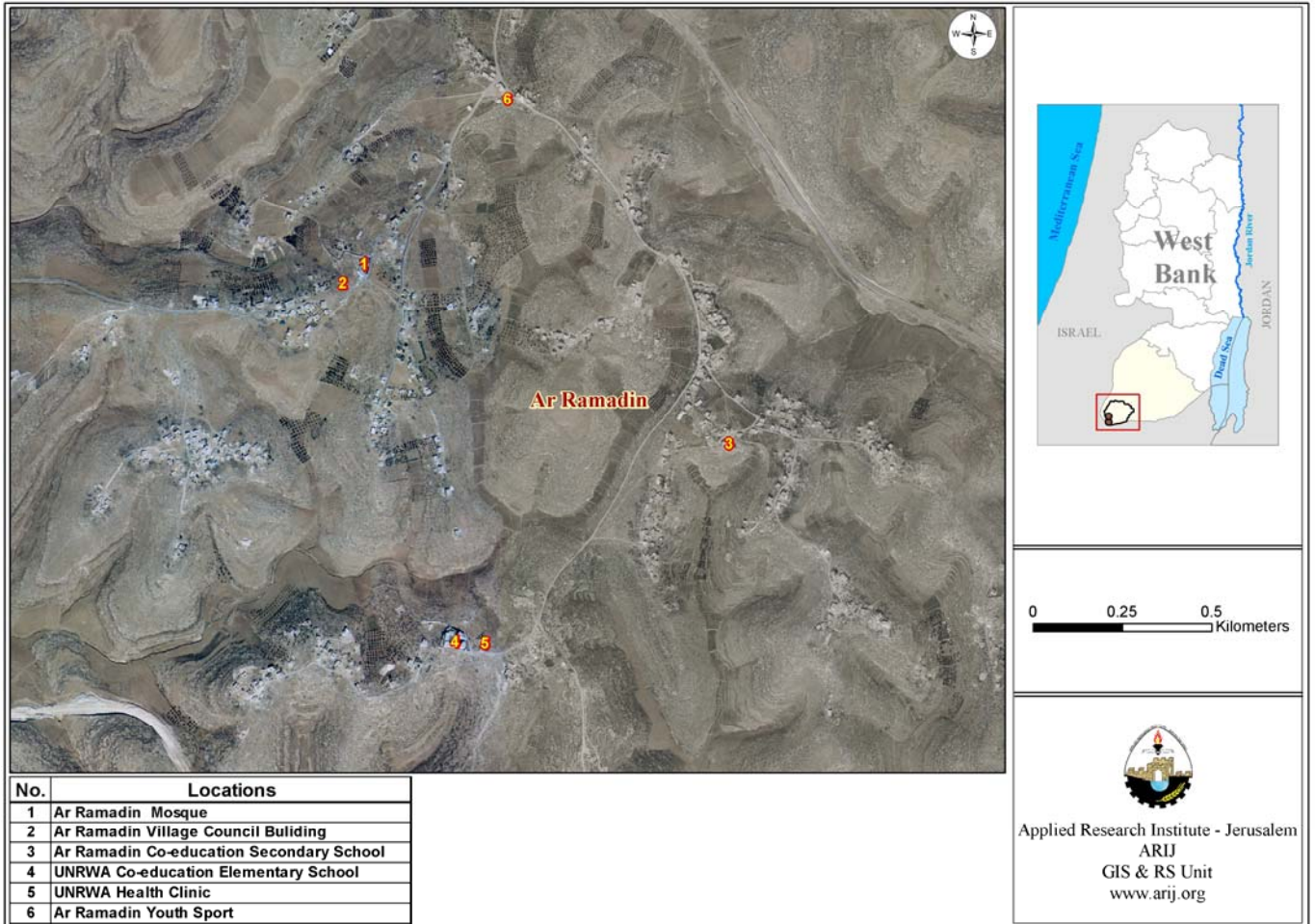
- Al Fadi Monastery
- Al Hawa Monastery
- ‘Asela Church

Institutions and Services

The main permanent institution in Ar Ramadin village is the village council, which was established in 1997. There are two additional institutions, which are:

- Ar Ramadin Youth Association: Established in 1990, it provides services to youth of Ar Ramadin village.
- Disable Society: Established in 1998, it provides services to disabled people in the village.

Map 2: Main locations in Ar Ramadin village



Infrastructure and Natural resources

- **Telecommunication Services:** In Ar Ramadin village, approximately 50% of the housing units are connected to the telecommunications network.
- **Water Services:** Ar Ramadin village is not connected to a water network and the village depends primarily on a water reservoir with a capacity of 50 cubic meters. The reservoir has been connected to the Israeli water network (MECEROT) since 1998, and residents bring water to their houses using tanks. In terms of alternative water sources, households depend on cisterns and water tankers. The water sector in the village is suffering from the following problems:
 1. Lack of a water network in the village
 2. Lack of rain
 3. The high prices of water tankers

- **Electricity services:** Recently, in 2006, the village of Ar Ramadin connected to an electricity network provided by the Israeli National Electric Company (Qutria) and 90% of the housing units are currently connected to the network. Electricity services in the village suffer from:
 1. The spread of new housing, whose electricity needs are unable to be met by the network.
 2. Debt accumulation to the Electricity Company.
 3. Non-payment of electricity bills by the residents of the village.
- **Sewage Disposal Facilities:** Ar Ramadin village lacks is not connected to a sewage network and residents in the village depend on cesspits or open channels for sewage and wastewater disposal.
- **Solid Waste Collection Services:** In Ar Ramadin village there is no solid waste management system and each household disposes of solid wastes randomly by burning them in open areas. It is estimated that 698 tons of solid waste are generated annually, of which 613 tons are generated in Ar Ramadin village and 85 tons in 'Arab al Fureijat village.
- **Transportation Services:** Ar Ramadin village suffers from the absence of a developed infrastructure; there are no paved or roads that are adequate for cars. Village officials state that private transportation is primarily used, as the main road is unsuitable for public transportation. However, four informal taxis serve the village. The transportation sector in the village suffers from several obstacles including the presence of military road blocks and earth mounds, a lack of paved roads, and lack of vehicles services.

Agricultural Sector

As mentioned before, the total area of Ar Ramadin village is 7,750 dunums of which 5,500 dunums are arable land, however, the cultivated land is only 5,000 dunums.

Village	Total Area	Arable Land	Agricultural Land	Built-up Area	Open Spaces
Ar Ramadin	3,500	2,200	2,000	800	500
'Arab al Fureijat	4,250	3,300	3,000	300	650
Total	7,750	5,500	5,000	1,100	1,150

Source: Palestinian Ministry of Agricultural (MoA), 2006

Table 11 shows the different types of rain-fed and irrigated open cultivated vegetables in the village of Ar Ramadin. The rain-fed fruity vegetables are the most cultivated covering an area of 48 dunums, where the most common vegetables cultivated are tomatoes, squash and snake cucumber. In addition, 10 dunums of land is irrigated for white cabbage production and 5 dunums for broad bean (Green).

Locality	Fruity vegetables		Leafy vegetable		Green legumes		Total	
	RF	Irr.	RF	Irr.	RF	Irr.	RF	Irr.
Ar Ramadin	30	0	0	10	4	1	34	11
‘Arab al Fureijat	18	0	0	0	0	0	18	0
Total	48	0	0	10	4	1	52	11

RF: Rain-fed, IRR: Irrigated

According to the agricultural data, the total area of land cultivated with olive trees was 208 dunums, all of which are rain-fed. In addition, the village has a total area of about 150 dunums cultivated with almond trees.

Locality	Olives		Stone-Fruits		Nuts		Other Fruit		Total Area	
	RF	Irr	RF	Irr	RF	Irr	RF	Irr	RF	Irr
Ar Ramadin	180	0	0	0	150	0	6	0	336	0
‘Arab al Fureijat	28	0	15	0	0	0	0	0	43	0
Total	208	0	15	0	150	0	6	0	379	0

RF: Rain-fed, IRR: Irrigated

Table 13 shows the total field crops cultivated in the village of Ar Ramadin. Cereals, in particular wheat and barley, are the most cultivated crops, covering an area of about 3,420 dunums. In addition, the cultivation of dry legumes crops, mostly lentils and chickpeas, and forage crops, such as common vetch and bitter vetch is common in the village of Ar Ramadin.

Locality	Cereals		Bulbs		Dry Legumes		Forage Crops		Stimulating Crops		Total Area	
	RF	Irr.	RF	Irr.	RF	Irr.	RF	Irr.	RF	Irr.	RF	Irr.
Ar Ramadin	1,410	0	6	0	153	0	200	0	10	0	1,779	0
‘Arab al Fureijat	2,010	0	4	0	253	0	500	0	10	0	2,777	0
Total	3,420	0	10	0	406	0	700	0	20	0	4,556	0

RF: Rain-fed, IRR: Irrigated

The data also indicates that about 80% of the households in of Ar Ramadin village are dependent upon rearing and keeping livestock. Table 14 shows the number of livestock in Ar Ramadin village; data indicates that most people are rearing sheep and goats, numbering 6,400 head and 4,000 head respectively. In addition, there are 24 cows, 30 donkeys, 75,000 birds and 4 beehives that belong to Ar Ramadin and ‘Arab al Fureijat residents.

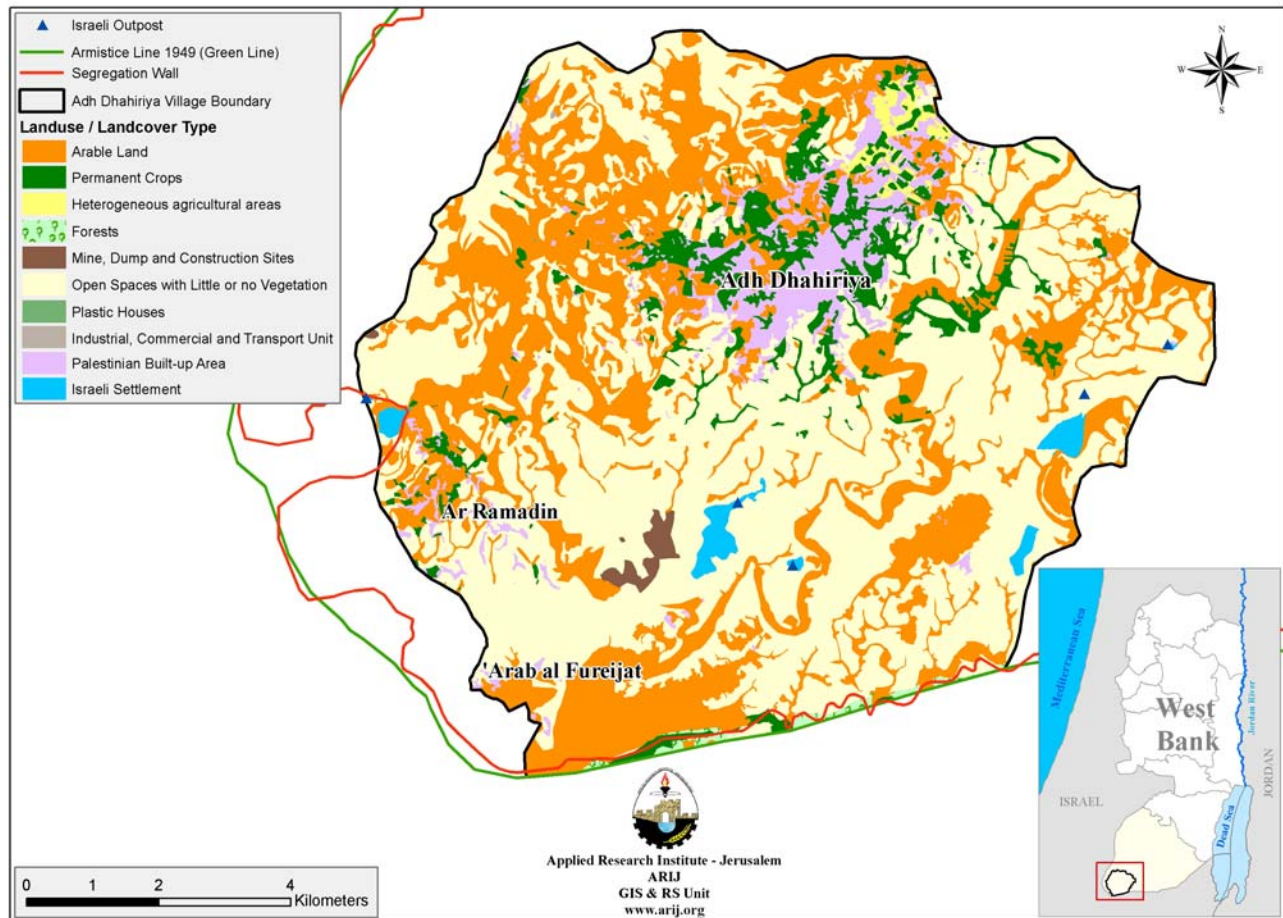
Locality	Cows*	Sheep	Goats	Donkeys	Mules	Broilers	Bee Hives
Ar Ramadin	24	3,200	2,000	20	5	45,000	4
‘Arab al Fureijat	0	3,200	2,000	10	0	30,000	0
Total	24	6,400	4,000	30	5	75,000	4

*Including cows, bull calves, heifer calves and bulls

Village officials cite a lack of capital and water, general economic infeasibility and the lack of agricultural machinery, in addition to Israeli activities in the area as the main issues facing the agricultural sector in the village. Israeli Forces have confiscated and destroyed about 150 olive trees and 100 almond trees since the beginning of the Second Intifada in 2000. The village is completely dependent on rainwater for irrigation.

There are an estimated 2000 meters of agricultural roads in the village, all of which are unpaved and suitable only for driving tractors and other agricultural machinery.

Map 3: Land use/ Land cover and Segregation wall route in Ar Ramadin village.



Impact of the Israeli Occupation

Ar Ramadin village’s location in the southern part of the Hebron Governorate near the Green Line causes it to feel considerable impacts from the Israeli occupation. It is surrounded by five Israeli settlements on the east, south and west sides, two Israeli bypass roads from the north and east sides, and the segregation Wall from the east, south and west sides. In addition, the village is subjected to two permanent checkpoints and three earth mound roadblocks. Village officials state

that the land confiscated by the Israeli Forces from Ar Ramadin village is about 500 dunums, as well as the destruction of ten housing units and institutions.

The construction of the Segregation Wall around the village began in 2006, and currently surrounds the village from the east, south, and west, covering a length of eight kilometres around the village on village lands. An additional ten kilometres is planned on village lands. In this section, the Wall is constructed from wire. Approximately 1,000 dunums of Ar Ramadin lands were confiscated to construct the Wall, two housing units destroyed and 300 trees were destroyed. In addition, 1,000 dunums of lands will isolated behind the Wall upon completion of its proposed path.

Development Plans and Projects

In 2005, an electricity project was implemented in the village, which was funded by the Kingdom of Norway and implemented by the local community authority.

Locality Development Priorities and Needs

According to the Ar Ramadin village council, the village suffers from a shortage of many infrastructural and services needs. Table 13 shows the development priorities and needs in the village.

Table 13: Development priorities and needs for Ar Ramadin Village						
No.	Sector	Strongly needed	Needed	Moderately needed	Not Needed	Notes
Infrastructural Needs						
1.	Opening and Pavement of Roads	*				19,000 m ^
2.	Construction of New Water Networks	*				12 km
3.	Rehabilitation of Old Water Networks				*	
4.	Construction of Water Reservoirs		*			600 m ³
5.	Extending the Water Network to cover New Built up Areas				*	
6.	Construction of a Sewage Disposal Network			*		
Health Needs						
1.	Building of New Clinics or Health Care Centres			*		
2.	Rehabilitation of Old Clinics or Health Care Centres		*			
3.	Purchasing of Medical Equipment and Tools		*			
Educational Needs						
1.	Building of New Schools				*	
2.	Rehabilitation of Old Schools		*			Secondary Education

3.	Purchasing of New Equipment for Schools		*			
Agricultural Needs						
1.	Rehabilitation of Agricultural lands	*				1,000 dunums
2.	Building Cisterns			*		
3.	Construction of Barracks for Livestock		*			
4.	Veterinary Services		*			
5.	Seeds and Hay for Animals	*				
6.	Rehabilitation of Greenhouses				*	
7.	Field Crops Seeds		*			
8.	Plants and Agricultural Supplies				*	

^ 4,000 m are main roads, 9,000 m internal roads, and 6,000 m agricultural roads.