

Adh Dhahiriya City Profile



Prepared by



The Applied Research Institute - Jerusalem

Funded by



Spanish Cooperation



Azahar program

February 2008

Table of Contents

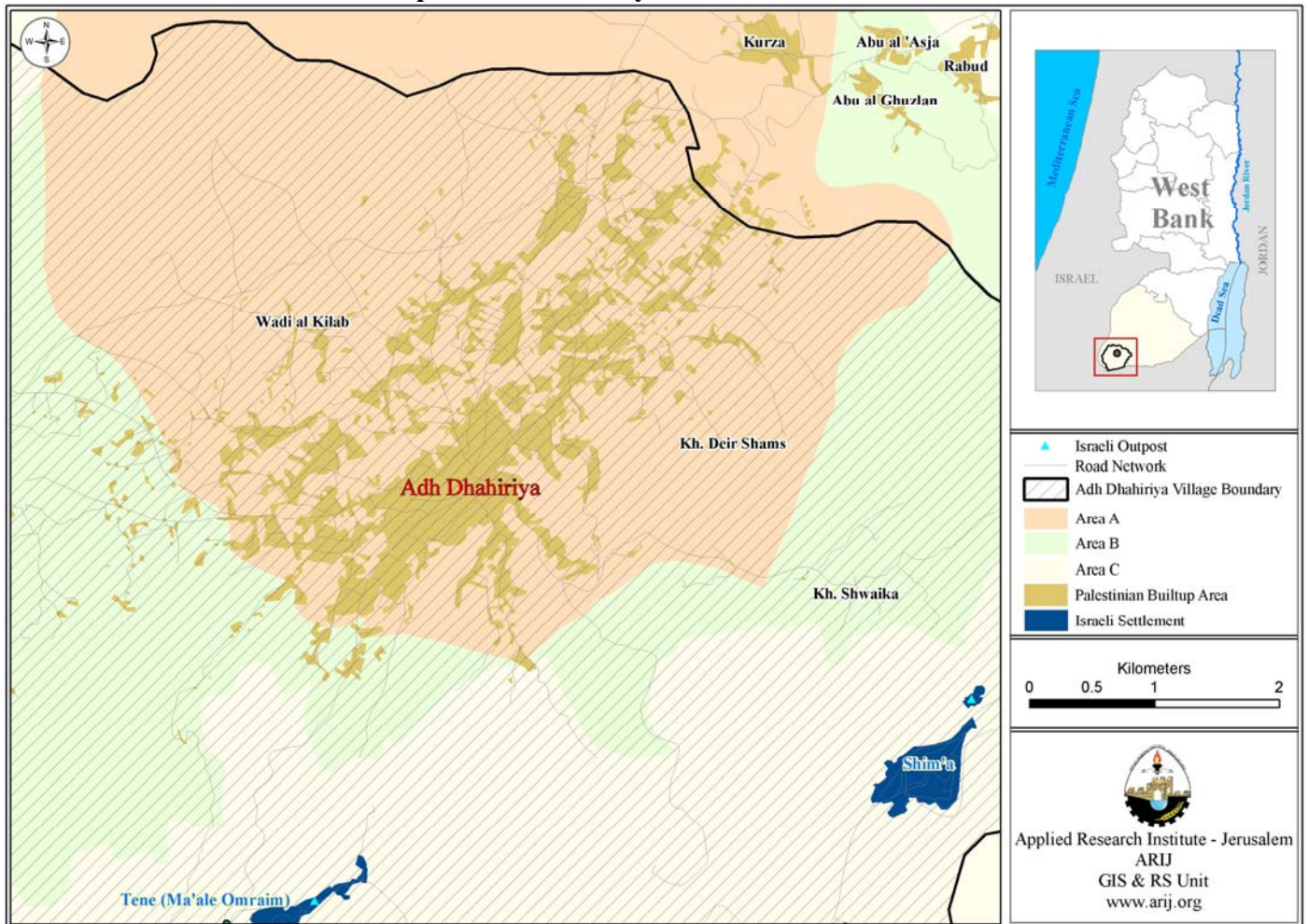
<i>Location and Physical Characteristics</i>	<u>2</u>
<i>History</i>	<u>3</u>
<i>Demography and Population</i>	<u>4</u>
<i>Economy</i>	<u>5</u>
<i>Education</i>	<u>7</u>
<i>Health Status</i>	<u>9</u>
<i>Religious and Archaeological Sites</i>	<u>10</u>
<i>Institutions and Services</i>	<u>10</u>
<i>Infrastructure and Natural Resources</i>	<u>11</u>
<i>Agricultural Sector</i>	<u>13</u>
<i>Impact of the Israeli Occupation</i>	<u>15</u>
<i>Development Plans and Projects</i>	<u>16</u>
<i>Locality Development Priorities and Needs</i>	<u>16</u>

Adh Dhahiriya City Profile

Location and Physical Characteristics

Adh Dhahiriya is a Palestinian city in the Hebron Governorate, which is located 21 km to the south of Hebron city in southern part of the West Bank. Adh Dhahiriya is bordered by As Samu' city to the east, Rabud, Abu al 'Asja, Kurza, Al Bireh, Al Burj (Dura cities) to the north, Ar Ramadin village to the west and the 1949 Armistice Line (Green Line) to the south. (See map 1).

Map 1: Adh Dhahiriya location and borders



The total area of Adh Dhahiriya is 98,000 dunums, of which 16,000 dunums are classified as Palestinian 'built up' area, 48,500 dunums are arable land, 3,500 dunums are classified as forests and open space area, and more than 30,000 dunums have been confiscated by the Israeli forces.

Adh Dhahiriya is located in a moderately mountainous area in the southern West Bank at an elevation of 632 m above sea level, with a mean rainfall 337 mm, an average annual temperature of 19 °C, and average annual humidity at 59.4 % (ARIJ GIS).

The first village council was established in Adh Dhahiriya in 1963; in 1996, the Palestinian Authority appointed a municipal council to govern Adh Dhahiriya, and in 2004, a new council of 13 members was elected, with 49 paid employees. Adh Dhahiriya Municipality has two buildings: one in the entrance of the city and the second located in the middle of the city. The municipal council operations and responsibilities include:

- Infrastructure services such as water, electricity and solid waste disposal
- Health Services
- Social development services
- Opening and construction of roads, and construction of public buildings, particularly schools

Adh Dhahiriya Municipality has five departments:

▪ Administration Department
▪ Engineering Department
▪ Accounting Department
▪ Supporting Services Department, which includes: Health, Solid Waste Collection, Transportation and Water Departments
▪ Medical Center Department

History

According to municipality data, Adh Dhahiriya was one of the main Canaanite cities, dating back to 5000 B.C. The city gained significant importance from its location on the trade route between Egypt and Al Sham (Syria).

Adh Dhahiriya’s name may be derived from the Canaanite word "*Dhoher*" (دُوهر), which means ‘post’, where it was a post and a connection point between Egypt and Al Sham. Another narrative suggests that the name Adh Dhahiriya is derived from “Al Thaher” (الظاهرة), which means a ‘high hill’ because it appears in all areas as Al Thaher Baybars, a Mamluk Islamic leader, called it.

Today, Adh Dhahiriya is considered the southern gate of the West Bank and the connection point between the West Bank and Beersheba city, increasing its importance in trade and economics and becoming one of the most important trade centers in the Hebron Governorate.

Photos of Adh Dhahiriya



Demography and Population

According to the 1997 Census, conducted by the Palestinian Central Bureau of Statistics (PCBS), the total population of Adh Dhahiriya was 20,521 people; of these 10,308 were males and 10,213 females. There were 3,123 households residing in 2,912 housing units.

Age Groups and Gender

Table 1 below classifies the population of Adh Dhahiriya city by age groups and sex, based on data from the 1997 census. Data demonstrates that 49.1% of the population was less than 15 years of age, 47.7% was between 15 and 64 years old and 3.3% were 65 years and above.

Sex	Age Group			Total	Percent (%)
	0-14	15-64	65+		
Male	5,139	4,857	312	10,308	50.3
Female	4,928	4,930	355	10,213	49.7
Total	10,067	9,787	667	20,521	100

Source: PCBS, May 1999. Population, Housing and Establishment Census-1997, Final Results

The table above reveals that the sex ratio in the city was 101 males for every 100 females in 1997, a percentage ratio of 50.3% to 49.7%, males to females.

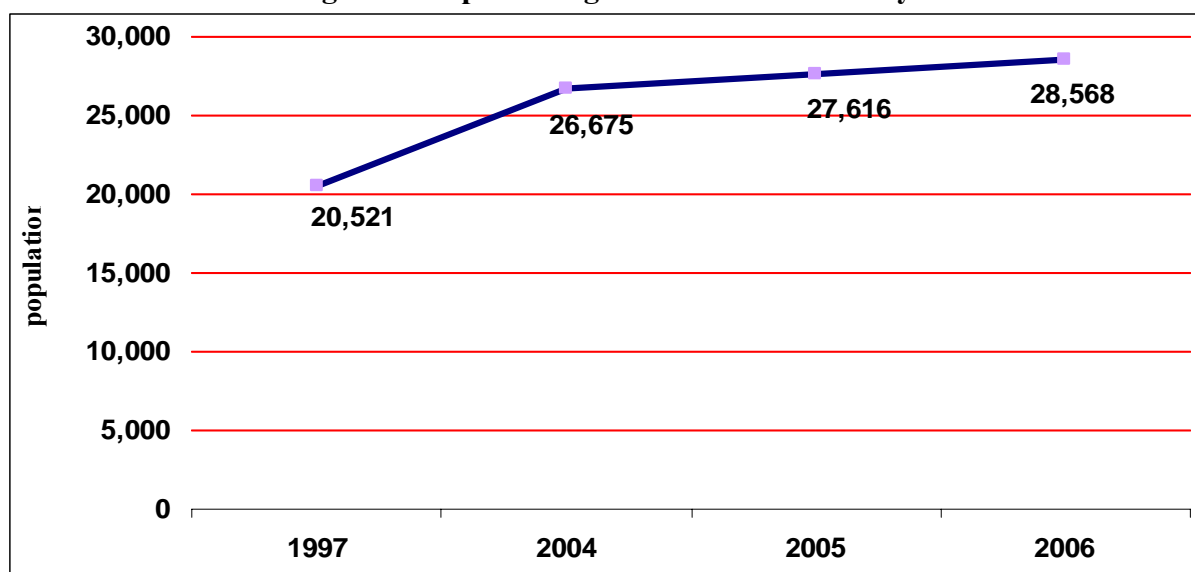
Population Growth

The Palestinian Central Bureau of Statistics estimated the population of Adh Dhahiriya to be 28,568 people by mid 2006. The data in table 3 indicates that the population of Adh Dhahiriya grew by 39.1% between 1997 and mid 2006, an increase of 8,047 people over a ten years.

City	Census 1997	Mid-year population		
		2004	2005	2006
Adh Dhahiriya	20,521	26,675	27,616	28,568

http://www.pcbs.gov.ps/Portals/_pcbs/populati/popu_list.aspx

Figure 1: Population growth in Adh Dhahiriya



Families

The population of Adh Dhahiriya is predominantly from the following families: Abu Allan (ابو علان), Al Hawarin (الهوارين), Al Jabarin (الجبارين), Al Awaisa (العوايسة), Al Qaysiyah (القيسية), Al Wraidat (الوريدات), Al Makharza (المخارزة), Al Tel (الطل), Al Batat (البطاط), Raba' (رباع), As Shawaheed (الشواهيد), and several other smaller families.

Migration

According to ARIJ field survey data, 70 people have migrated from Adh Dhahiriya during and after the second Intifada.

Economy

Prior to 1967, Adh Dhahiriya city residents were primarily dependent on the agricultural sector, especially livestock rearing, as the city had a vast area of arable lands. Farmers were able to live off food collected entirely from their own harvested crops and livestock populations.

After the Israeli occupation of the West Bank and Gaza Strip in June 1967, the Israeli labor market was opened to Palestinian workers. Adh Dhahiriya's location bordering the Green Line

and high wages found in the Israeli labor market encouraged many workers to leave their agricultural work, as well as their economic and business activities in the city.

Data collected from the municipality indicates that 50% of the work force population is engaged in the Israeli labor market, while 15% work in the governmental or private sector and 15% work in the agricultural sector. The remaining 20% work in trade and the commercial sector.

The economic base of Adh Dhahiriya is also dependent upon 66 grocers, 36 clothing shops, 7 butchers, 10 blacksmiths, 7 carpenters, 44 services and 280 other shops (including scrap shops). In addition, there are several olive pressing, stone cutting and soap factories.

Based on field survey conducted in 2007 by ARIJ in Hebron localities, the social groups most affected in the city by the Israeli restrictions during the Second Intifada were: 1) Workers that had previously worked in the Israeli labor market, 2) Families with six individuals and more, 3) Small traders, 4) Small farmers, 5) Housewives and children.

Labor Force

According to the PCPS, Population, Housing and Establishment Census-1997 results, 63.8% of the population of Adh Dhahiriya were of working age (10 years and above). Of the 13,100 people above the minimum working age, 4,416 people (33.7%) were economically active (in the labor force), of whom 73% were employed, and 11.8% were unemployed and have worked or were unemployed and had never worked. The total number of economically non-active persons (i.e. those out of the labor force) was 8,637, 41.2% of whom were students and 46.1% were housewives. (See table 3):

Sex	Economically Active				Not Economically Active							Total
	Employed	Currently Unemployed	Unemployed (Never Worked)	Total	Students	House-wives	Unable to work	Not working & Not looking For Work	Other	Total	Not Stated	
M	3,035	511	546	4,092	1,743	0	265	315	24	2,347	18	6,457
F	189	12	123	324	1,813	3,984	214	262	17	6,290	29	6,643
T	3,224	523	669	4,416	3,556	3,984	479	577	41	8,637	47	13,100

Source: PCBS, May 1999. Population, Housing and Establishment Census-1997, Final Results

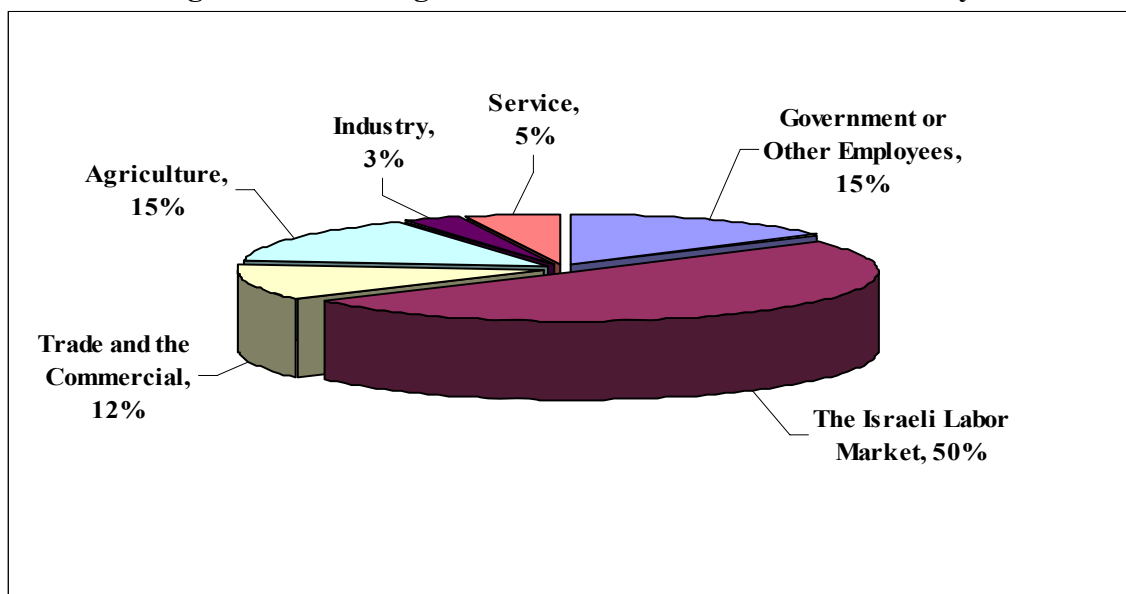
Since the outbreak of the second Intifada in 2000, many Palestinian workers have been unable to reach their places of work in Israel, resulting in the loss of primary income sources from many workers from Adh Dhahiriya. Furthermore, trade is hindered due to successive closures within the Hebron Governorate, and residents have been unable to market their products or expand commercial activities.

According to city officials’ estimates, the economic base of the city consists of the following sectors:

- Government or Other Employees (15%)
- The Israeli Labor Market (50%)

- Trade and the Commercial Sector (12%)
- Agriculture Sector (15%)
- Industrial Sector (3%)
- Service sector (5%)

Figure 2: Percentage of economic activities in Adh Dhahiriya



Education

According to PCBS, Population, Housing and Establishment Census 1997 results, about 2,341 persons were illiterate (17.9% of the total population), of whom 67.9% were female. Of the literate population, 2,528 persons (19.3%) received no schooling, 6,533 persons (49.9%) had elementary and preparatory education, 1,084 persons (8.3%) had a secondary degree, and 259 persons (2.0%) had an associate diploma or a bachelor’s degree and other degree. Table 4 shows educational attainment by sex in Adh Dhahiriya:

Table 4: Adh Dhahiriya population (10 years and above) by sex and educational attainment

Sex	Illiterate	Can read & write	Elementary	Preparatory	Secondary	Associate Diploma	Bachelor	Higher Diploma	Master	PhD	Not Stated	Total
M	752	1,295	1,879	1,500	666	176	161	2	15	3	8	6,457
F	1,589	1,233	1,776	1,378	418	152	65	0	0	1	31	6,643
T	2,341	2,528	3,655	2,878	1,084	328	226	2	15	4	39	13,100

Source: PCBS, 1999. Population, Housing and Establishment Census-1997, Final Results

The field survey data indicated that there are three levels of education in Adh Dhahiriya: pre-school (kindergartens), basic and secondary education. The data reveals that there are 18 schools, of which 8 schools are for males, 9 schools are for females and 1 school is co-educational. Seventeen schools are supervised by public sector and one school is supervised by private sector. The number of schools by name, stage, sex and supervising authority shows in table 5.

No.	School Name	Stage	Sex	Supervising Authority
1.	Adh Dhahiriya Boys Secondary School	Secondary	Male	Governmental
2.	Othman bin Afan Boys Elementary School	Elementary	Male	Governmental
3.	Abu Obeida Boys Elementary School	Elementary	Male	Governmental
4.	Doma Boys Elementary School	Elementary	Male	Governmental
5.	Annab Al Sagher Boys Elementary School	Elementary	Male	Governmental
6.	Adh Dhahiriya Boys Elementary School (A)	Elementary	Male	Governmental
7.	Adh Dhahiriya Boys Elementary School (B)	Elementary	Male	Governmental
8.	Al thaher Babars Boys Elementary School	Elementary	Male	Governmental
9.	Adh Dhahiriya Girls Secondary School	Secondary	Female	Governmental
10.	Khoula Bant AL_Zores Girls Elementary School	Elementary	Female	Governmental
11.	Eshbelleya Girls Elementary School	Elementary	Female	Governmental
12.	Ae'ashea Bant Abu Bakr Girls School	Elementary	Female	Governmental
13.	Andalusia Girls Elementary School (A)	Elementary	Female	Governmental
14.	Andalusia Girls Elementary School (B)	Elementary	Female	Governmental
15.	Shuhdea' Adh Dhahiriya Girls Elementary School	Elementary	Female	Governmental
17.	Adh Dhahiriya Girls Elementary School	Elementary	Female	Governmental
18.	Doma Girls Elementary School	Elementary	Female	Governmental
19.	Adh Dhahiriya Islamic Elementary Co-education School	Elementary	Co-education	Private

Source: ARIJ database, 2006

According to Ministry of Higher Education (MOHE) data, by the end of the scholastic year 2006/2007 there were 8,268 students 305 teachers and 235 classes (See table 6).

		Government	Private	UNRWA	Total
Male	No. of Schools	8	-	-	8
	No. of class	110	-	-	110
	No. of Teachers	139	-	-	139
	No. of Students	3934	-	-	3934
Female	No. of Schools	9	-	-	9
	No. of class	121	-	-	121
	No. of Teachers	161	-	-	161
	No. of Students	4253	-	-	4253
Co-education	No. of Schools	-	1	-	1
	No. of class	-	4	-	4

	No. of Teachers	-	5	-	5
	No. of Students	-	81	-	81

Source: ARIJ Data Base – 2006

As of 2007, there were six kindergartens in the city, all privately run. These kindergartens provide pre-school education services to 530 children in the city (see Table 7).

No.	Kindergarten Name	Number of Classes	Number of Children	Number of Teachers	Supervising Authority
1.	Razan Kindergarten	5	135	6	Private
2.	Cub Adh Dhahiriya Kindergarten	3	50	4	Private
3.	Islamic Adh Dhahiriya Kindergarten	7	228	8	Private
4.	Ghassan Kanafani Kindergarten	3	49	4	Private
5.	Bud Renaissance Kindergarten	1	35	2	Private
6.	Albbade Children Kindergarten	2	33	2	Private

Source: ARIJ Data Base – 2006

The educational sector in the city is suffering from the following problems:

- Lack of classrooms: Adh Dhahiriya schools have been forced to rent classrooms to meet the needs of the increasing number of students.
- The existence of evening education because of a lack of classrooms.

Health Status

Governmental, private and UNWRA sectors serve the health sector in the city. The main health institution in the city is the medical center, which was established during the second Intifada. The center provides health services including ambulance services and has a variety of medical equipment. In addition to the medical center, there are 14 physician clinics (of which 12 are private clinics), 9 private dental clinics, an X-ray center, a medical lab, a women's health care clinic, and physiotherapy department. The city is also served by three governmental Maternity & Pediatric Centres, which provide doctors and other services for children, for example, vaccination services. Table 8 below shows the health institution in the city by supervising authority.

Institution	Governmental	Private	UNRWA	NGO
Physician Clinic	1	12	1	-
Dental Clinic	-	9	-	-
Health Clinic	-	1	-	-
X-Ray Centre	-	1	-	-
Medical Lab	-	4	-	-
Maternity & Pediatric Centre	3	-	-	-
Pharmacy	-	11	-	-
Ambulance	1	-	-	-

Physiotherapy Centre	-	1	-	-
Total	5	39	1	-

In the event of an emergency, residents of Adh Dhahiriya are forced to use Hebron hospitals and health centers, located 22 km from the city. Municipality officials cite several obstacles facing the health sector in the city, including insufficient medicine available in pharmacies, insufficient specialized doctors, lack of hospitals, and the lack of buildings large enough for a health centre.

Religious and Archaeological Sites

There are nine mosques in Adh Dhahiriya: Adh Dhahiriya large mosque, Al Atqah mosque, Al Omary mosque, Ali Ibn Abi Talib mosque, Al Ansar mosque, Bilal bin Rabah mosque, Ayub mosque and Mo'eth Ben Jabaël mosque.

There are also a number of archeological and historical sites in the city: Doma, the Old City, Al Husn, Shuwaikah, Sammah, Kafr Gul, Caesareya and Anab al Kabir sites.

Institutions and Services

Adh Dhahiriya has many public institutions and ministry offices, these include:

- Post Office
- Ministry of Labor Office
- Ministry of Agriculture Office
- Two of offices of the Ministry of Social Affairs
- Firefighter Center
- Police station
- Security Office

In addition to the public and government institutions, Adh Dhahiriya has seven societies and clubs, which are:

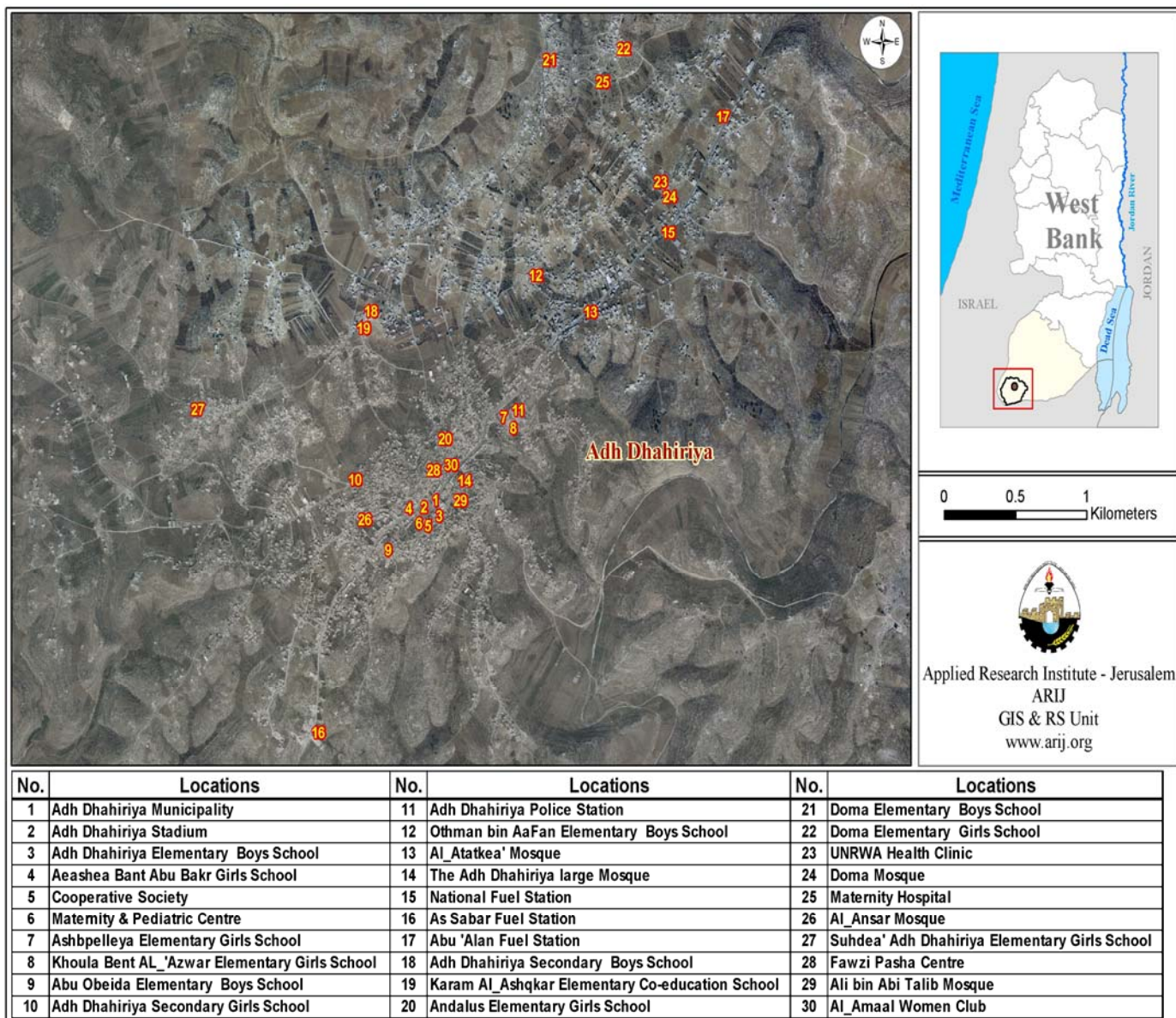
1. Municipality: Established in 1996, its main duties are to provide public service to the residents and manage the city affaires.
2. Adh Dhahiriya Young Sport Club
3. Adh Dhahiriya Charitable Society
4. Chamber of Commerce
5. Al Ahaly Young Club
6. Adh Dhahiriya Women Club
7. Adh Dhahiriya Ladies Society

Table 9 shows the number of institutions in Adh Dhahiriya by type.

Table 9: No. of institutions in Adh Dhahiriya by type

	Type of institution						
	Governmental	Education	Charitable	Women	NGO	Agriculture	Sports
Adh Dhahiriya	8	24	1	2	0	0	2

Map 2: Main locations in Adh Dhahiriya



Infrastructure and Natural Resources

- **Telecommunication Services:** Approximately 20% of the housing units in Adh Dhahiriya are connected to the telecommunication network.

- **Water Services:** Adh Dhahiriya has been connected to the water network since 1974, which is supplied by the Israeli water company MECEROT. Currently, municipal officials estimate that 30% of housing units have access to the water network. Since the Adh Dhahiriya municipality assumed control of the water network, it has invested great time, energy, and money into the expansion and rehabilitation of the water system. It possesses a water reservoir with a 120 cubic meter capacity, though water tanks and cisterns remain the primary alternative water sources to the water network. Adh Dhahiriya is one of the main cities that are facing a water shortage as it receives a quantity of water ten times less than what it is demanded; increasing water prices are also of concern.
- **Electricity Networks:** Since 1992, Adh Dhahiriya has been connected to an electrical network supplied by the Israeli National Electrical Company (Qutria). According to Adh Dhahiriya officials, approximately 70% of housing units are connected to the network. Officials cite obstacles to the continued expansion of the network in meeting growing demand, including factors such as the lack of electricity generation and the existence of an open electrical line resulting in the loss of current.
- **Sewage Disposal Facilities:** Adh Dhahiriya is not connected to a sewage network, hence wastewater is disposed of in septic tanks and cesspits. Municipal officials note that lack of a sewage network and safe sewage disposal is resulting in public health concerns.
- **Solid Waste Collection Services:** Adh Dhahiriya has a solid waste management system, whereby solid waste are collected daily by trucks owned by the Municipality and transported to a dumping site owned by the Municipality, which is located approximately five kilometers from the community. The primary means of solid waste disposal is burning and dumping. Municipality data estimates that the community generates 15 tons of solid waste daily.
- **Transportation Facilities:** Adh Dhahiriya's transportation consists of one bus and 80 taxis registered in taxies offices. The main obstacles facing transportation in Adh Dhahiriya are the Israeli military barriers and lack of suitable roads. While Adh Dhahiriya boasts 45 kilometers of well-maintained, paved roads, an additional 10 km are paved but in a state of poor repair, and 118 km of road are completely unpaved (see Table 10).

Road Condition	Road length (km)		
	Main roads	Internal roads	Agricultural roads
Paved roads in good condition	10	35	-
Paved roads in bad condition	3	7	-
Unpaved roads	-	93	25
Total	13	135	25

Source: ARIJ database, 2006

Agricultural Sector

Adh Dhahiriya city lies on a total area of 98,000 dunums. 48,500 dunums are considered arable land; however, only 22,928 dunums are cultivated, while 25,572 dunums remain uncultivated.

Locality	Total Area	Arable Land		Build up Area	Forests Area	Open Spaces and Rangelands
		Cultivated Area	Uncultivated Area			
Adh Dhahiriya	98,000	22,928	25,572	16,000	300	33,200

Source: Palestinian Ministry of Agricultural (MoA), 2006

As shown in Table 12, there are 11 dunums of greenhouses, of which 9 dunums are used to grow cucumbers.

Locality	Greenhouses	High Tunnels	Low Tunnels	Total
Adh Dhahiriya	11	0	0	11

Table 13 shows the different types of rain-fed and irrigated open cultivated vegetables in the city of Adh Dhahiriya. The rain fed fruity vegetables, such as snake cucumber, tomato and squash are the most cultivated, covering an area of about 382 dunums. In addition, green legume vegetables are commonly cultivated in this area.

Locality	Total fruity vegetables		Total leafy vegetable		Total green legumes		Total bulbs		Total other vegetables		Total rain fed and irrigated open vegetables	
	RF	Irr.	RF	Irr.	RF	Irr.	RF	Irr.	RF	Irr.	RF	Irr.
Adh Dhahiriya	382	0	2	0	57	0	0	10	1	0	442	10

RF: Rain-fed, IRR: Irrigated

In the city of Adh Dhahiriya, a total area of 3,335 dunums is planted with olive trees. Other trees planted in the area include almond trees, grape vines, fig trees, and apricot trees.

Locality	Total area of olives		Total area of citrus		Total area of stone-fruits		Total area of pome fruits		Total area of nuts		Total area of the other fruit		Total area of horticulture and olive tree	
	RF	Irr	RF	Irr	RF	Irr	RF	Irr	RF	Irr	RF	Irr	RF	Irr
Adh														

Dhahiriya	3,335	0	0	0	125	0	0	0	505	0	418	0	4,383	0
-----------	-------	---	---	---	-----	---	---	---	-----	---	-----	---	-------	---

RF: Rain-fed, IRR: Irrigated

Table 15 shows the total field crops cultivated in the city of Adh Dhahiriya. Cereals, in particular wheat and barley, are the most cultivated covering an area of 13,100 dunums. In addition, the cultivation of dry legumes such as lentils and garbanzos (humus) are common in Adh Dhahiriya.

Locality	Total Cereals		Total bulbs		Dry legumes		Total forage crops		Total stimulating crops		Total Field crops	
	RF	Irr.	RF	Irr.	RF	Irr.	RF	Irr.	RF	Irr.	RF	Irr.
Adh Dhahiriya	13,100	0	125	0	2,550	0	1,650	0	30	0	17,455	0

RF: Rain-fed, IRR: Irrigated

The data indicates that the residents of Adh Dhahiriya are also dependent upon rearing and keeping livestock, such as cows, sheep, goats and chickens, in addition to about 187 beehives.

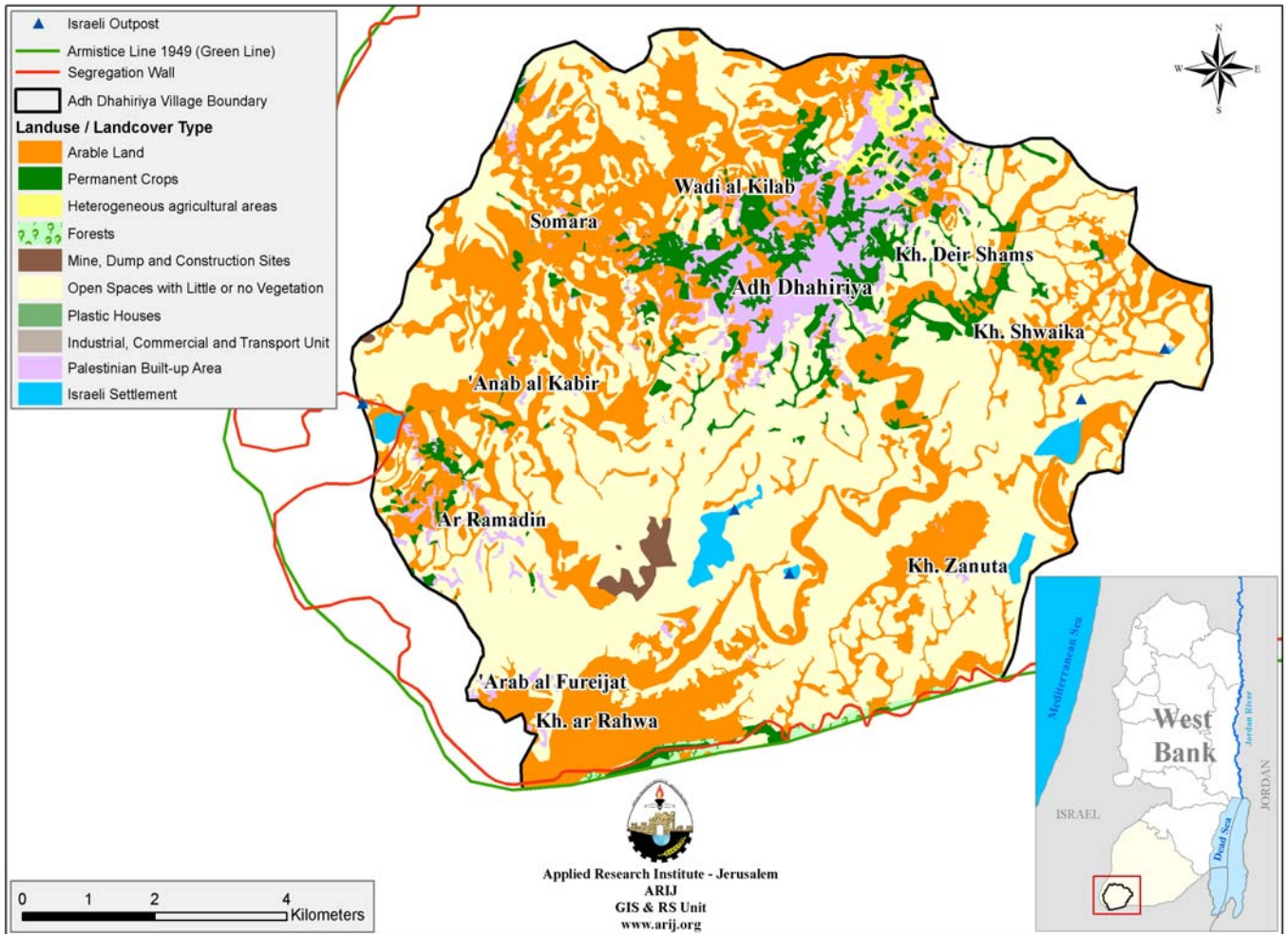
Locality	Cows*	Sheep	Goats	Horses	Donkeys	Mules	Broilers	Layers	Bee Hives
Adh Dhahiriya	603	25,000	6,000	5	235	5	500,000	--	187

*Including cows, bull calves, heifer calves and bulls

In Adh Dhahiriya there are approximately 40 kilometers of agricultural roads that are suitable for tractors and agricultural machinery, though this is largely insufficient, and new roads to cover the vast agricultural area of the city are needed. The agriculture sector in the city is suffering from the following problems:

- Lack of water and capital
- Lack of pastures
- Difficulty in marketing agricultural products
- Lack of agricultural development programs in the city
- Unfeasibility of agriculture in the region

Map 3: Land use/land cover and segregation wall in Adh Dhahiriya



Impact of the Israeli Occupation

Adh Dhahiriya lies adjacent to the Green Line, and considerable suffering has taken place due to the Israeli occupation. There are four Israeli settlements surrounding the city: Eshkolot settlement to the southeast, Tene settlement to the south, Shima settlement to the east and the new Shima settlement to the south. Adh Dhahiriya is also surrounded by an Israeli bypass road, which runs from the west to the south and east.

There are three permanent military checkpoints and one iron gate around Adh Dhahiriya, as well as numerous and unpredictable flying checkpoints elsewhere and one iron gate.

Construction of the Segregation Wall began around Adh Dhahiriya in 2007. The Wall borders the town from two sides, stretching 12 km around the south and west of the city. In the construction of the wall, five housing units have been destroyed, seven housing units have received demolition orders and the Wall has isolated 70 people. According to municipal officials, 5,000 dunums of Adh Dhahiriya lands were confiscated for the Wall and a further 5,000 dunums have been isolated.

Development Plans and Projects

The Adh Dhahiriya Municipality established a plan for development projects, 27 of which have been implemented using external funding since 2004.

Locality Development Priorities and Needs

According to Adh Dhahiriya Municipality, the city has suffered from shortages in many infrastructure and service requirements. Table 19 below summarizes development priorities and needs in the city.

Table 19: Development priorities and needs for Adh Dhahiriya						
No.	Sector	Strongly Needed	Needed	Moderately Needed	Not Needed	Notes
Infrastructural Needs						
1.	Opening and Pavement of Roads	*				136 km ^
2.	Construction of New Water Networks	*				10 km
3.	Rehabilitation of Old Water Networks	*				5 km
4.	Construction of Water Reservoirs				*	5000 cubic meter
5.	Extending the Water Network to cover New Built up Areas	*				
6.	Construction of a Sewage Disposal Network	*				10 km
Health Needs						
1.	Building of New Clinics or Health Care Centres	*				
2.	Rehabilitation of Old Clinics or Health Care Centres	*				
3.	Purchasing of Medical Equipment and Tools	*				
Educational Needs						
1.	Building of New Schools	*				
2.	Rehabilitation of Old Schools	*				
3.	Purchasing of New Equipment for Schools	*				
Agriculture Needs						
1.	Rehabilitation of Agricultural lands	*				15000 dunums
2.	Building Cisterns	*				150 cisterns
3.	Construction of Barracks for Livestock	*				50
4.	Veterinary Services	*				
5.	Seeds and Hay for Animals	*				
6.	Rehabilitation of Greenhouses	*				15
7.	Field Crops Seeds	*				
8.	Plants and Agricultural Supplies	*				

^ 8 km main roads, 88 km internal roads, 40 km agricultural roads