

# 'Abda Village Profile



**Prepared by**



**The Applied Research Institute - Jerusalem**

**Funded by**



**Spanish Cooperation**



**Azahar program**

**December 2007**

## *Table of Contents*

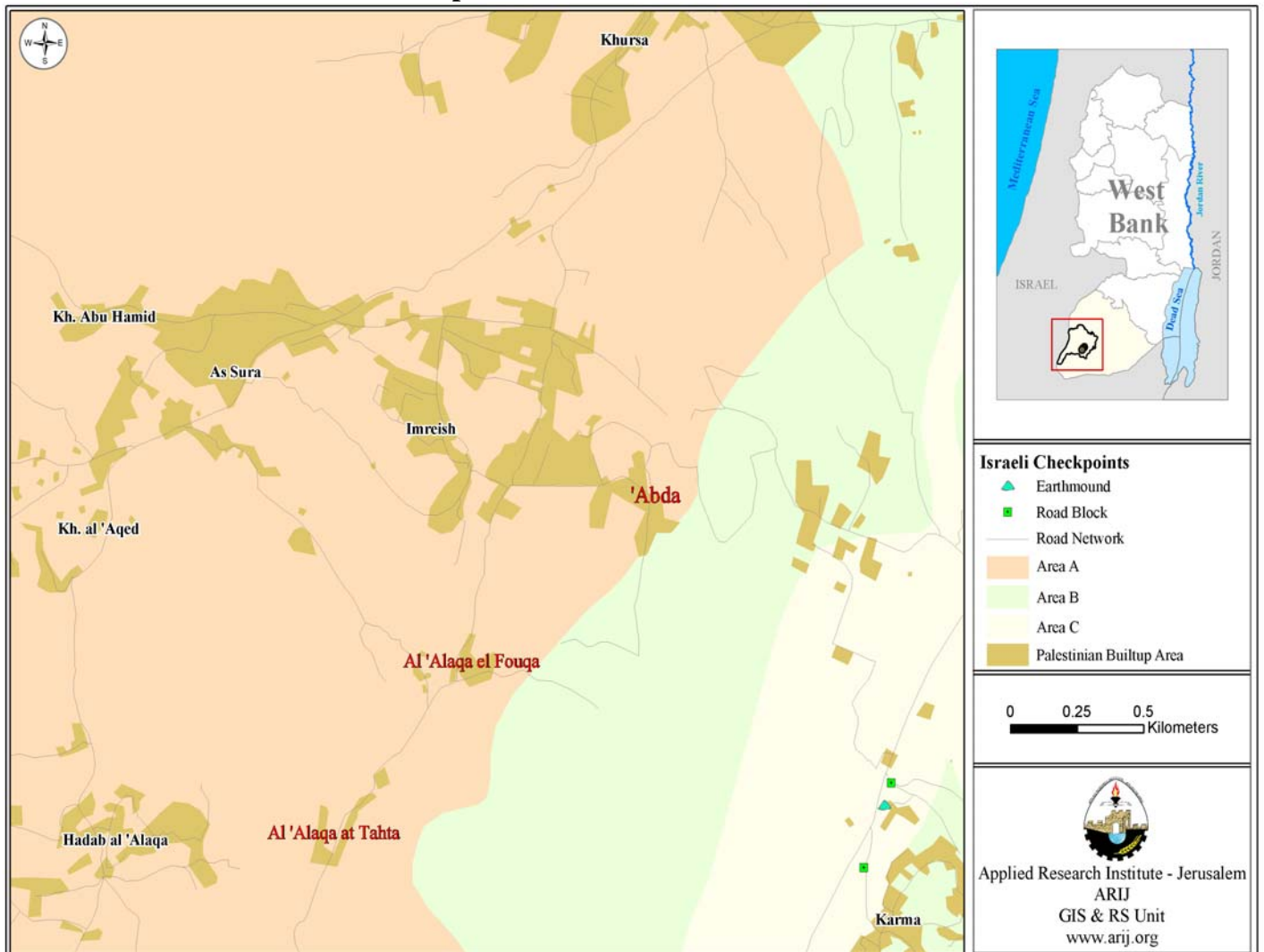
<i>Location and Physical Characteristics</i>	<u>3</u>
<i>History</i>	<u>4</u>
<i>Demography and Population</i>	<u>4</u>
<i>Economy</i>	<u>6</u>
<i>Education</i>	<u>8</u>
<i>Health Status</i>	<u>9</u>
<i>Religious and Archeological Sites</i>	<u>9</u>
<i>Institutions and Services</i>	<u>9</u>
<i>Infrastructure and Natural Resources</i>	<u>10</u>
<i>Agricultural Sector</i>	<u>11</u>
<i>Impact of the Israeli Occupation</i>	<u>14</u>
<i>Development Plans and Projects</i>	<u>14</u>
<i>Locality Development Priorities and Needs</i>	<u>14</u>

# ‘Abda Village Profile

## Location and Physical Characteristics

‘Abda is a Palestinian village in the Dura region which is located 10 km southwest of the city of Hebron in the southern part of the West Bank. It shares borders with Karma and Khirbet Bism to the east, Khursa to the north, Hadab al 'Alaqa and Imreish to the west, and Abu al 'Asja and Kurza to the south (See map 1).

**Map 1: ‘Abda location and borders**



The total area of ‘Abda village is 3,050 dunums. 430 dunums are classified as Palestinian built up area, 2,350 dunums are agricultural lands, and 118 dunums are open spaces and forests. The other 80 dunums have been confiscated by the Israeli forces.

'Abda extends over a mountainous area southwest of Hebron city, with an elevation of 761m above sea level. The mean annual rainfall in 'Abda village reaches 436 mm; the average annual temperature is 16 °C, and the average annual humidity is 61% (ARIJ GIS).

Since 1996, 'Abda village has been governed by a village council, which comprises of 3 members and one employee. The village council activities and responsibilities include:

1. Administration, planning and development;
2. Infrastructure maintenance; water, electricity, solid waste collection,
3. Social services.

According to Ministry of Local Authority classification, 'Abda compromises of 'Abda, Al 'Alaqa at Tahta, and Al 'Alaqa al Fauqa villages.

## History

'Abda village is a very old village. Canaanites, Romans and Muslims once inhabited the area. The name of 'Abda is derived from arabic word (abda) which means 'worker', as it was famous for its inhabitants planting trees. The original residents of 'Abda were from Arab tribes that migrated from the Arab Peninsula and east of Jordan.

**Photos of 'Abda**



## Demography and Population

According to the first census conducted (by Palestinian Central Bureau of Statistics [PCBS] in 1997) the total population of 'Abda village was 283 people. Of which 128 people were living in 'Abda, 88 people were living in Al 'Alaqa at Tahta and 67 people were living in Al 'Alaqa al Fauqa. 592 residents were males and 576 were females. Abda village consisted of 45 households that resided in 45 housing units (1997 census).

Village	Male	Female	Total
'Abda	74	54	128
Al 'Alaqa at Tahta	45	43	88
Al 'Alaqa al Fauqa	34	33	67
<b>Total</b>	<b>153</b>	<b>130</b>	<b>283</b>

Source: PCBS, 1997

### Age groups and gender

The 1997 census reveals the demographic of the population of 'Abda village by age groups and sex. The census data showed that 40.9% were less than 15 years of age, 55.1% were between the ages of 15-64, and 4% were 65 years and above (See table 2)

The sex ratio in the village was 118 males for every 100 females. Males constituted 54.1% of the population and females constitute 45.9%.

Sex	Age				percent
	0 -14	15 -64	65 +	Total	
<b>Male</b>	60	85	8	153	54.1
<b>Female</b>	56	71	3	130	45.9
<b>Total</b>	116	156	11	283	100

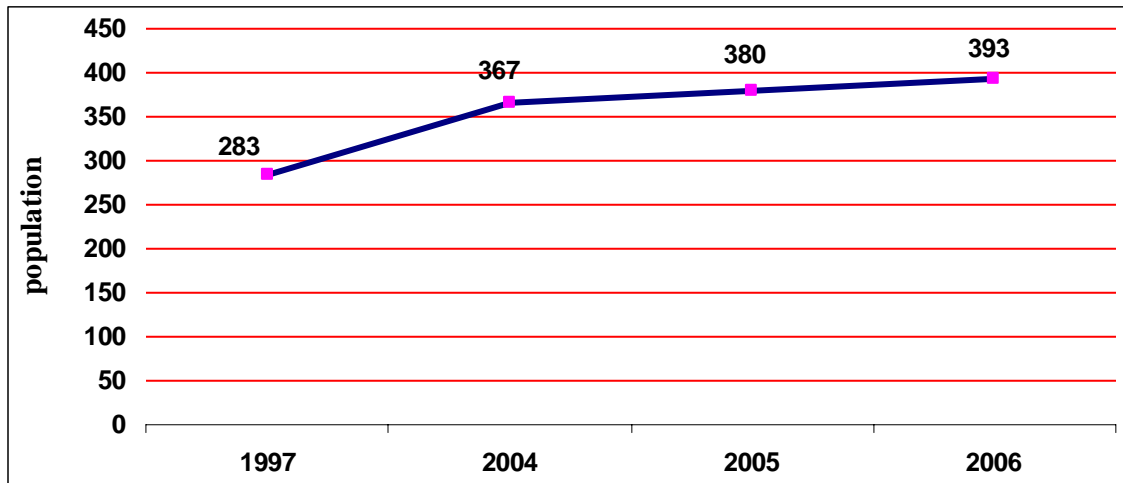
Source: PCBS, May 1999. Population, Housing and Establishment Census-1997, Final Results

### Population Growth

The Palestinian Central Bureau of Statistics estimated the population of 'Abda village in mid 2006 to be 493 people. The data in table 3 indicates that the population of 'Abda village has grown by 38.9% between 1997 and mid 2006, an increase of 110 people over ten years.

	1997 census	Mid-year population in		
		2004	2005	2006
<b>'Abda</b>	128	166	172	178
<b>Al 'Alaqa at Tahta</b>	88	114	118	122
<b>Al 'Alaqa al Fauqa</b>	67	87	90	93
<b>Total</b>	283	367	380	393

Source: <http://www.pcbs.gov.ps/populati/pop10.aspx>

**Figure 1: Population growth in 'Abda village**

### Families

The population of 'Abda comprises of eight main families: Dodien (دودين) 50%, Qazzaz (قزاز) 15%, Daraweesh (دراويش) 10%, Khilaf (خلاف) 4%, Abu Arkoub (أبو عرقوب) 8%, Saleam (سليم) 3% Shahin (شاهين) 3% and Abu I'qifan (أبو عقيفان) 7%.

### Migration

According to field survey data, there have been 4 people who have left 'Abda village due to Israeli incursions and disruptions during the second Intifada.

### Economy

'Abda is an agriculture village. Most of the residents work on plantations or rearing livestock. As mentioned previously, 71.5% of the total area (2350 dunums) is agriculture land, and about 50% of the population (who are of the working age) are engaged in agricultural activities. In addition to agriculture, the residents also depend heavily on the Israeli labor market. 20% of the residents (of working age) work in Israel, and 20% of 'Abda's working population is employment in the public or private sector. With regards to industrial institutions; there are small industries that produce building blocks, flagstones, and cutting stones, and there is one factory that produces cover iron. There are also three groceries in 'Abda village.

According to a recent field survey, the social groups most affected in the village by the Israeli restrictions during the Second Intifada were: 1) previous workers in Israeli labor market, 2) small-scale farmers, 3) families made up of 6 individuals or more, 4) small-scale traders and 5) housewives and children. (ARIJ database, 2006)

### Labor Force

The 1997 census reveals that in 'Abda, Al 'Alaqa at Tahta and Al 'Alaqa al Fauqa, about 66 % of the population of 'Abda were over the minimum working age (10 years) This is considered

high compared the national level that is less than 45%. Out of 197 people of working age, 65 people (32.9 %) were economically active in the labor force- and 132 people (67.1 %) were not economically active-. Of the economically active people 98.5 % were male and 1.5% were female. 84.6% of the total population were employed in the village, 7.7% were currently unemployed and 7.7% were unemployed and never worked. The largest groups of non-economically active people were students and housewives. They constituted 45.5% and 38.6% of the total working population, respectively. Table 4 shows the labor force status in ‘Abda village.

**Table 4: ‘Abda population (10 years and above) by sex and employment status -1997**

Sex	Economically Active				Not Economically Active						Total
	Employed	Currently Unemployed	Unemployed (Never Worked)	Total	Students	House-wives	Unable to work	Not working & Not looking For Work	Other	Total	
M	54	5	5	64	38		5	2	0	45	109
F	1			1	22	51	4		10	87	88
<b>T</b>	<b>55</b>	<b>5</b>	<b>5</b>	<b>65</b>	<b>60</b>	<b>51</b>	<b>9</b>	<b>2</b>	<b>10</b>	<b>132</b>	<b>197</b>

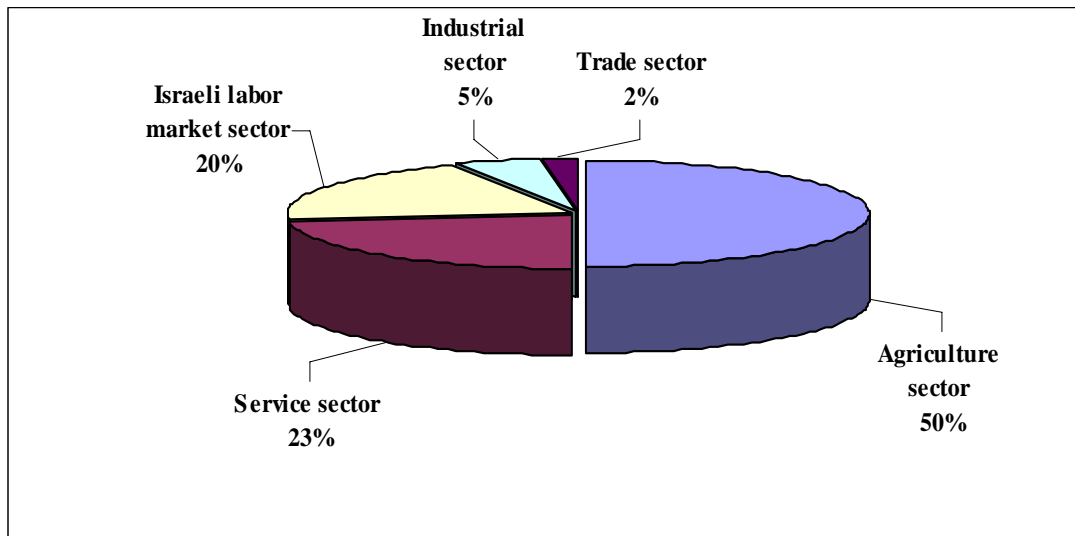
Source: PCBS, May 1999. Population, Housing and Establishment Census-1997, results

Since September 2000, the Israeli restrictions and incursions against Palestinian people have increased and severely affected the economy of ‘Abda residents. In the beginning, Israeli forces imposed restrictions on the residents' movements, so they were unable to access their own lands, to cultivate or harvest their crops, which ultimately meant that local farmers could not sell their products. A lot of areas have also seen crops and trees destroyed and uprooted. As a result, the residents have lost their primary source of income and many have become unemployed as a result of it.

Below is the percentage of the population working in the various sectors of the economy, the data was collected by the village council:

- The agriculture sector 50 %,
- The service sector 23 %,
- Israeli labor market 20 %.
- The industrial sector 5%,
- The trade sector 2 %.

**Figure 2: Percentage of economic activity in ‘Abda village**



### Education

According to 1997 census, approximately 14.6% of the residents of Abda were illiterate Women (75.9%) comprise a greater percentage of illiterates than men (24.1 %). Of the literate population, 13.6% of residents could read and write, 17.1 % completed elementary education, 28.6 % completed preparatory education, 12.6% completed secondary education and 13.5 % completed higher education. Table 5 shows the education status in ‘Abda by sex and education attainment in 1997.

**Table 5: ‘Abda population (10 years and above) by sex and educational attainment**

Sex	Illiterate	Can read & write	Elementary	Preparatory	Secondary	Associate Diploma	Bachelor	Higher Diploma	Master	PhD	Total
M	7	16	13	39	11	13	10	—	1	—	110
F	22	11	21	18	14	2	1	—	—	—	89
<b>T</b>	<b>29</b>	<b>27</b>	<b>34</b>	<b>57</b>	<b>25</b>	<b>15</b>	<b>11</b>	<b>—</b>	<b>1</b>	<b>—</b>	<b>199</b>

Source: PCBS, May 1999. Population, Housing and Establishment Census-1997, Final Results

The field survey indicated that there is one co-education school in ‘Abda village that provides elementary educating. The school is called ‘Imreish Elementary Co-education School’ which is governed by public sector. The distribution of class, teachers and students in the school is shown in the next table.

**Table 6: Total No. classes and students by sex in ‘Abda village (2005-2006)**

		Government	Private	Total
<b>Co-education</b>	No. of Schools	1	0	<b>1</b>
	No. of classes	14	0	<b>14</b>
	No. of Teachers	17	0	<b>17</b>
	No. of Students	371	0	<b>371</b>

Source: ARIJ Data Base – 2005

The education sector in ‘Abda village faces many problems. These include: a lack of secondary schools, a lack of kindergarten, a lack of libraries for students, and a lack of suitable playing areas.

**Health Status**

‘Abda village has a simple health service. There is one public physician clinic, and one Maternity & Pediatric Center, both of which are supervised by government sector. The clinic ran by one physician who visits the village twice a week. The village lacks any kind of consistent health service. There are also no ambulances or pharmacies. The village official’s cite obstacles that they face are: a lack of specialized clinics, a lack of doctors in the village, and a no hospital nearby.

In emergency cases residents of 'Abda receive their healthcare services from neighboring villages, including Dura, as well as the city of Hebron.

**Religious and Archeological Sites**

There is one mosque in the village which is called “Salmean Alfaresy Mosque”, otherwise the village lacks any archaeological or historical sites.

**Institutions and Services**

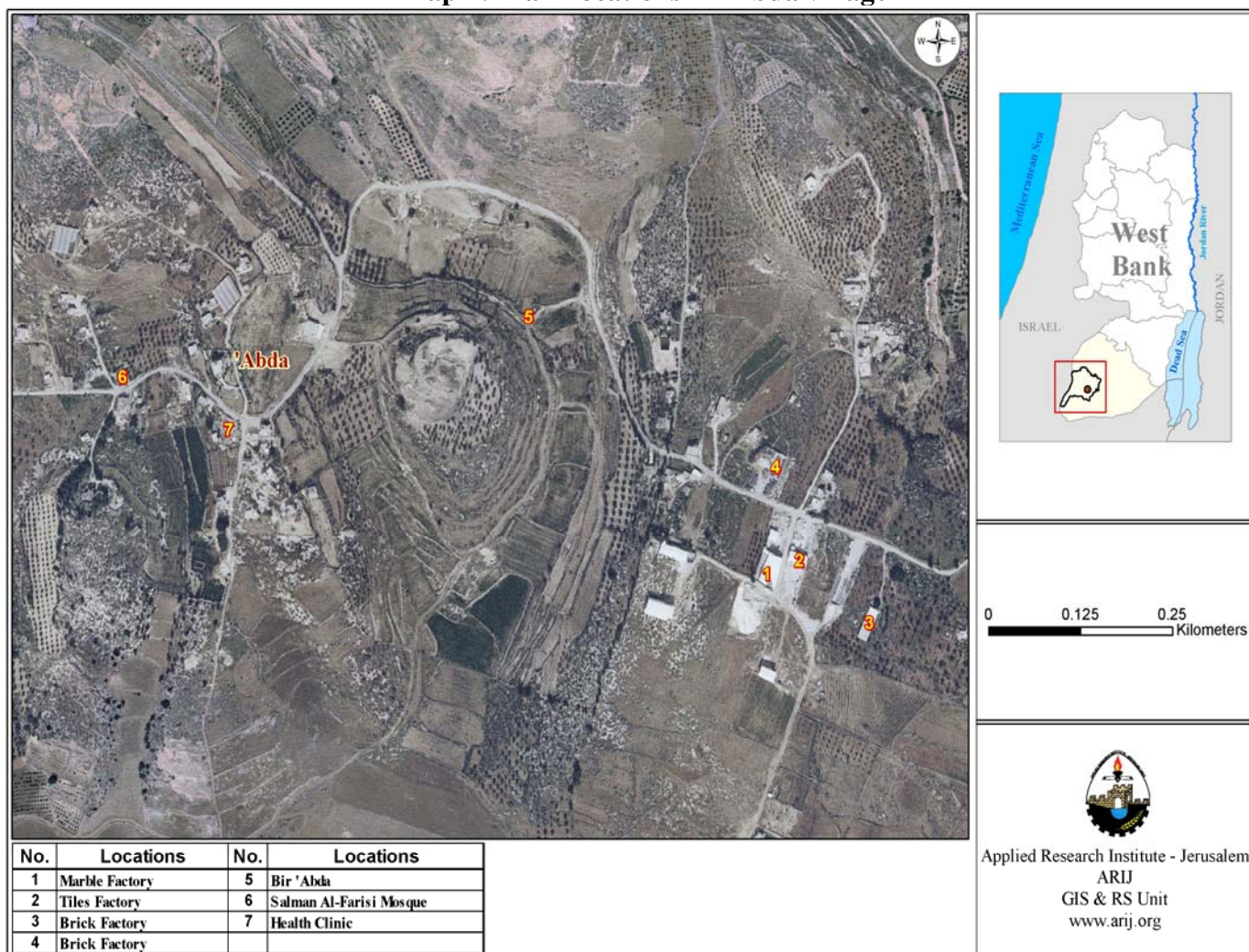
As 'Abda is a small rural village, the residents mainly get their services from the cities of Dura and Hebron, which are the main cities in the Governorate. However, 'Abda does have three institutions. These are:

1. 'Abda Village Council: Established in 1996, it is the foremost institution in the village and provides many services to the village.
2. Womens Club: a social institution for children and women.
3. The Health Awareness Committee

The next table shows the number of institutions in ‘Abda by type.

<b>Table 7: No of institutions in ‘Abda by type</b>							
	<b>Type of institution</b>						
	<b>Gov.</b>	<b>Charitable</b>	<b>Women</b>	<b>NGO</b>	<b>Agriculture</b>	<b>Sports</b>	<b>Worship</b>
<b>‘Abda</b>	1	1	1	0	0	0	1

Map 2: Main locations in ‘Abda village



### Infrastructure and Natural Resources

- **Telecommunication Services:** ‘Abda village is connected to a telecommunication network. Approximately 70% of the households have a telephone connection.
- **Water Services:** ‘Abda is not connected to any water network; the village owns cisterns that are an alternative resource to the water network. The village has three springs, two of which are used for agriculture irrigation - specifically vegetables. The other is for human uses. The village has also one water reservoir which has the capacity of 330 cubic meters. The water services in ‘Abda suffer from many, wide-ranging problems. These include:
  1. The pollution of water springs.
  2. The shortages of water, and increasing water tanks prices.
  3. Absent of a water network.
  4. Insufficient amount of cisterns.

- **Electricity Services:** ‘Abda has been connected to a electricity network since 1994. Approximately 100% of the housing units in the village are connected to the electricity network. ‘Abda village council manages the distribution of electricity which is supplied by the Israeli Electric Cooperation. As with many localities, ‘Abda suffers from many problems, including:
  1. Old and deteriorated electricity networks.
  2. Newly built areas that are not connected to the electricity network.
  3. Shortage of electricity regulators which distribute and increase the capacity of the electricity network.
- **Solid Waste Collection:** There is no solid waste management system in ‘Abda, every household disposes able of its own solid waste by fire.
- **Sewage Disposal Facilities:** ‘Abda in not connected to any sewage network. All households must therefore dispose of their wastewater in cesspits.
- **Transportation Services:** There are about 19 km internal roads in ‘Abda village, 5 km of which are paved and in a good condition, 2 km are paved but in an unsatisfactory condition and 12 km are not paved at all. The main mode of transportation in ‘Abda compromises of 6 informal taxis. There are many travel problems that face the villagers on a daily bases. These include: shortage of vehicles and transportation services, and a deterioration of roads.

## Agricultural Sector

Abda village lies on a total area of 3050 dunums. 2350 dunums are considered arable land; however only 1868 dunums are actually cultivated.

Locality	Total Area	Arable Land		Build up Area	Forests Area	Open Spaces and Rangelands
		Cultivated Area	Uncultivated Area			
‘Abda	3050	1868	482	430	23	95

Source: Palestinian Ministry of Agricultural (MoA), 2006

As shown in Table 9, there are about 6.9 dunums of plastic houses, but no tunnels in ‘Abda village. All 6.9 dunums are used for growing cucumbers.

Locality	Plastic Houses	High Tunnels	Low Tunnels	Total
‘Abda	6.9	0	0	6.9

Table 10 shows the different types of rain-fed and irrigated open cultivated vegetables in the village of ‘Abda. The rain-fed fruity vegetables are the most cultivated with an area of about 107 dunums. The most common vegetables cultivated within this area are zucchinis and squash.

Locality	Total fruity vegetables		Total leafy vegetable		Total green legumes		Total bulbs		Total other vegetables		Total rain fed and irrigated open vegetables	
	RF	Irr.	RF	Irr.	RF	Irr.	RF	Irr.	RF	Irr.	RF	Irr.
'Abda	107	4	0	11	5.5	2.3	0	4.5	7	5.5	119.5	27.3

RF: Rain-fed, IRR: Irrigated

There are 4 types of aromatic medical plants in the village of 'Abda which spreads over a total area of about 11 dunums. These plants are thyme, mint, chamomile and sage.

Locality	Total aromatic medicinal plants		
'Abda	Rain-fed	Irrigated	Total
	10	1	11

In the village of 'Abda, there is a total area of 741 dunums of olive tree plantations. Other trees planted in the area include; almond trees, apricot trees, fig trees and grape vines.

Locality	Total area of olives		Total area of citrus		Total area of stone-fruits		Total area of pome fruits		Total area of nuts		Total area of the other fruit		Total area of horticulture and olive tree	
	RF	Irr	RF	Irr	RF	Irr	RF	Irr	RF	Irr	RF	Irr	RF	Irr
'Abda	741	0	0	2	111	0	1	0	338	0	144	0	1335	2

RF: Rain-fed, IRR: Irrigated

Table 13 shows the total field crops cultivated in the village of 'Abda. The cereals wheat, white corn and barley are the most cultivated crops with an area of about 233 dunums. In addition, the cultivation of dry legumes crops, in particular lent, and forage crops such as common vetch and bitter vetch is common in the village of 'Abda.

Locality	Total Cereals		Total bulbs		Dry legumes		Oil crops		Total seeds		Total forage crops		Total stimulating crops		Total other crops		Total Field crops	
	RF	Irr	RF	Irr	RF	Irr	RF	Irr	RF	Irr	RF	Irr	RF	Irr	RF	Irr	RF	Irr
'Abda	233	0	9	0	53	0	0	0	1	0	53	0	7	0	2	0	358	0

RF: Rain-fed, IRR: Irrigated

The data also indicates that the residents of 'Abda village are also dependent on the rearing and keeping of livestock, such as sheep, goats and chicken, in addition to about 28 bee hives.

Locality	Cows*	Sheep	Goats	Camels	Horses	Donkeys	Mules	Broilers	Layers	Bee Hives
'Abda	0	220	100	0	0	18	3	59,300	---	28

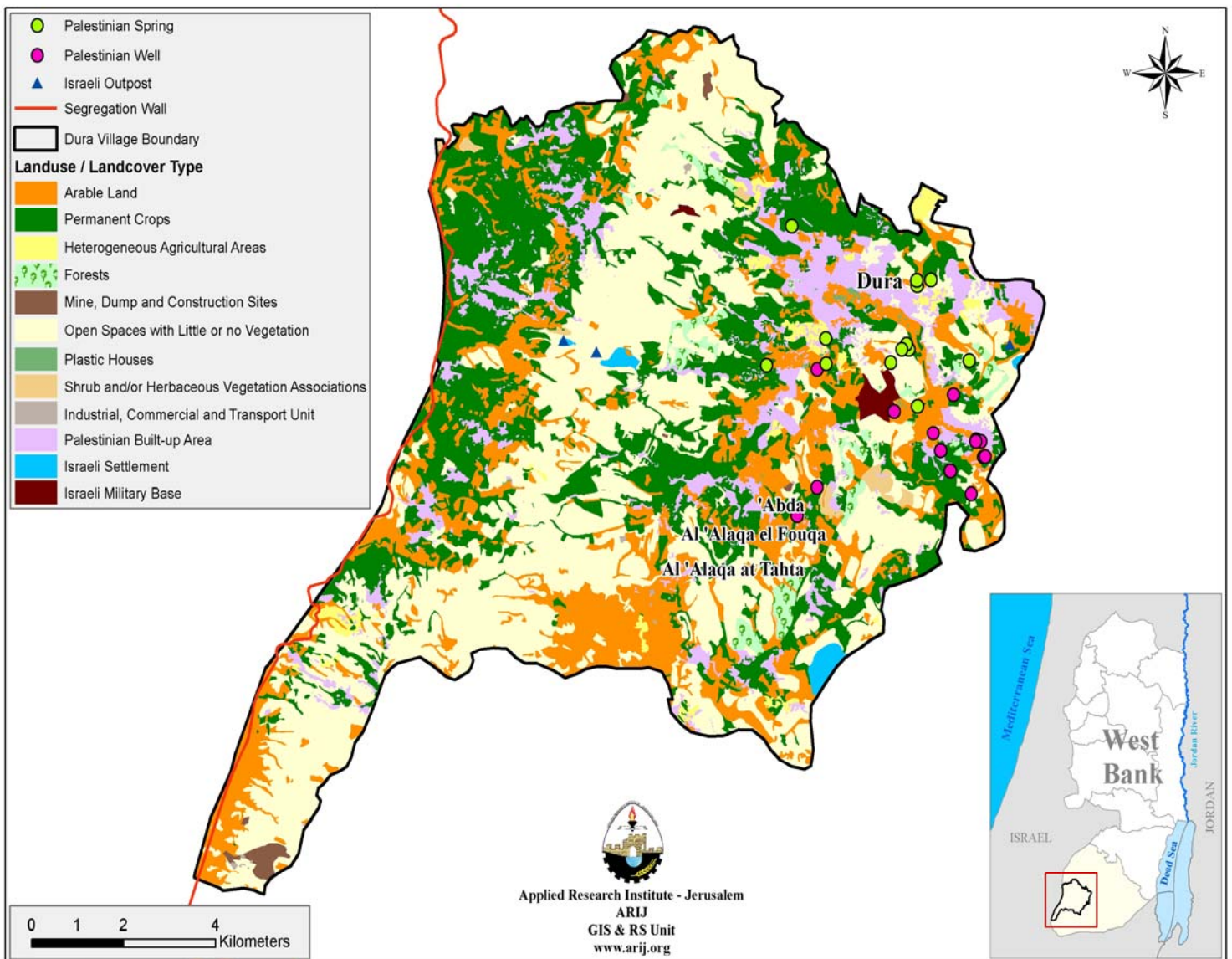
\*Including cows, bull calves, heifer calves and bulls

As mentioned previously ‘Abda is an agriculture village and most of it terrain is arable land. Approximately 2,350 dunums is agriculture land and 50% of the residents are engaged in agriculture activities.

Rainfall is the main source of water for irrigation in the village, but the field survey indicates that the farmers also depend on the springs and cisterns.

There are about 12 km of agricultural roads in ‘Abda suitable for driving tractors and other agricultural machines. But this is still an insufficient amount. The village is in need of new roads that can cover the vast agricultural area in the village.

**Map 3: Land use/ Land cover and Segregation wall route in ‘Abda village**



## Impact of Israeli Occupation

'Abda is affected directly by a bypass road that has opened east of the village to connected Israeli settlements. The bypass road has meant the confiscation of about 30 dunums of the land of the village. 'Abda is also affected by many Israeli 'flying' checkpoints and its entrance is closed in by earth mode and concrete blocks. This has restricted the movement towards Dura and other near localities. Since the beginning of second intifada Israeli forces have demolished two houses in the village.

## Development Plans and Projects

Since 2004, 'Abda village council has implemented many projects for development of the village's infrastructure. These projects, funded by outside donors, include:

No.	Project name	Type	Funded by
1.	Rehabilitation of agriculture land	Agriculture	UAWC/UNDP
2.	Construction cisterns and Gray water treatment units	Agriculture	OXFAM G.B
3.	Work Against Food Project	Food Security	CRS

## Locality Development Priorities and Needs

According to the village council, 'Abda suffers from a shortage of many infrastructural and service needs. Table 18 shows development priorities and needs of the village.

No.	Sector	Strongly Needed	Needed	Moderately Needed	Not Needed	Notes
<b>Infrastructural Needs</b>						
1.	Opening and Pavement of Roads	*				7 km*
2.	Construction of New Water Networks	*				8 km
3.	Rehabilitation of Old Water Networks				*	
4.	Construction of Water Reservoirs				*	2000 cubic meter
5.	Extending the Water Network to cover New Built up Areas				*	
6.	Construction of Sewage Disposal Network				*	
<b>Health Needs</b>						
1.	Building of New Clinics or Health Care Centre	*				
2.	Rehabilitation of Old Clinics or Health Care Centres		*			
3.	Purchasing of Medical Equipments and Tools		*			

<b>Educational Needs</b>						
1.	Building of New Schools	*				Secondary
2.	Rehabilitation of Old Schools				*	
3.	Purchasing of New Equipments for Schools		*			
<b>Agriculture Needs</b>						
1.	Rehabilitation of Agricultural lands	*				500 dunums
2.	Building Cisterns	*				20 cisterns
3.	Construction of Barracks for Livestock		*			3
4.	Veterinary Services		*			
5.	Seeds and Hay for Animals		*			
6.	Rehabilitation of Greenhouses				*	
7.	Field Crops Seeds		*			
8.	Plants and Agricultural Supplies		*			

*\* 2.5 km main roads, 2 km internal, 3 km Agricultural*